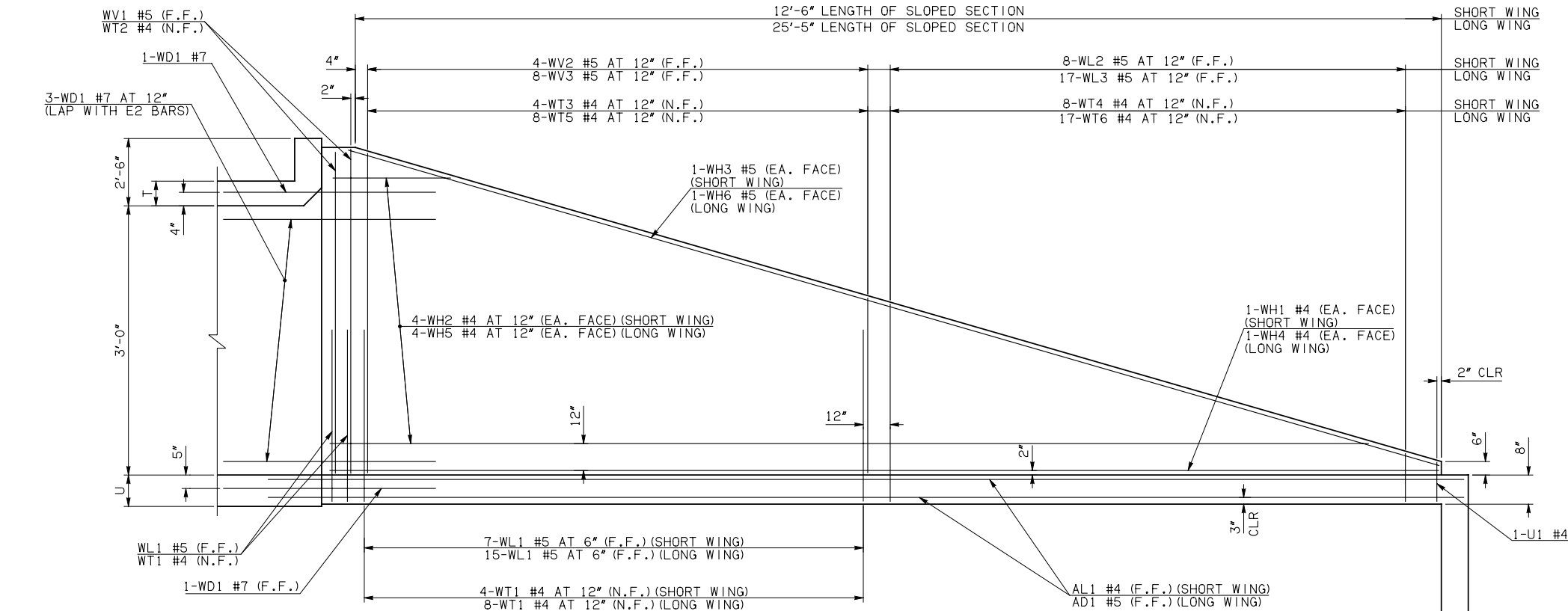


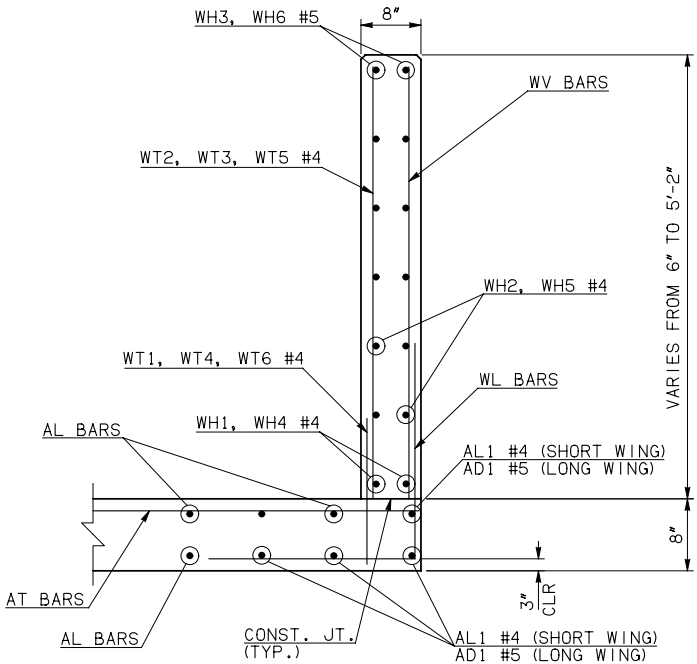
DESCRIPTION	REVISIONS	DATE



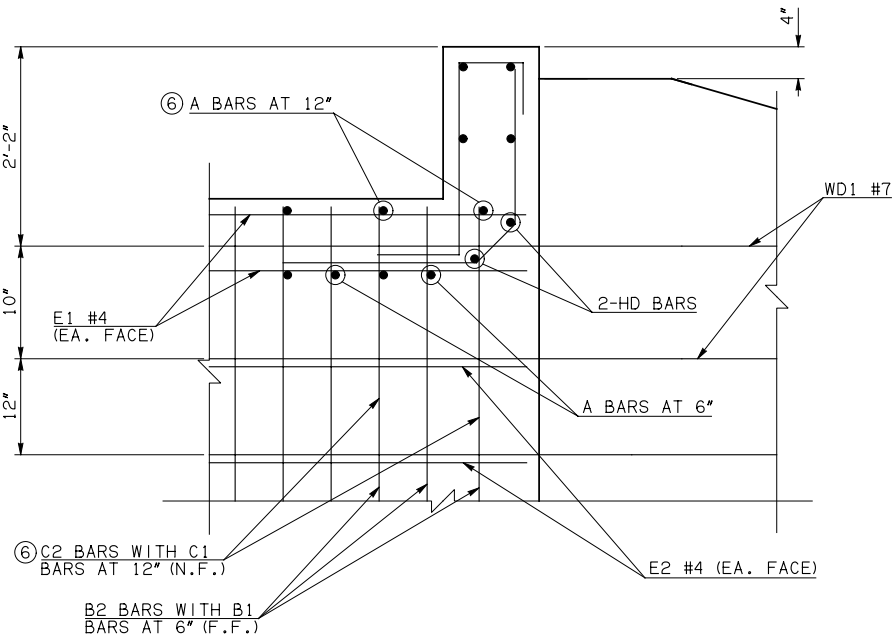
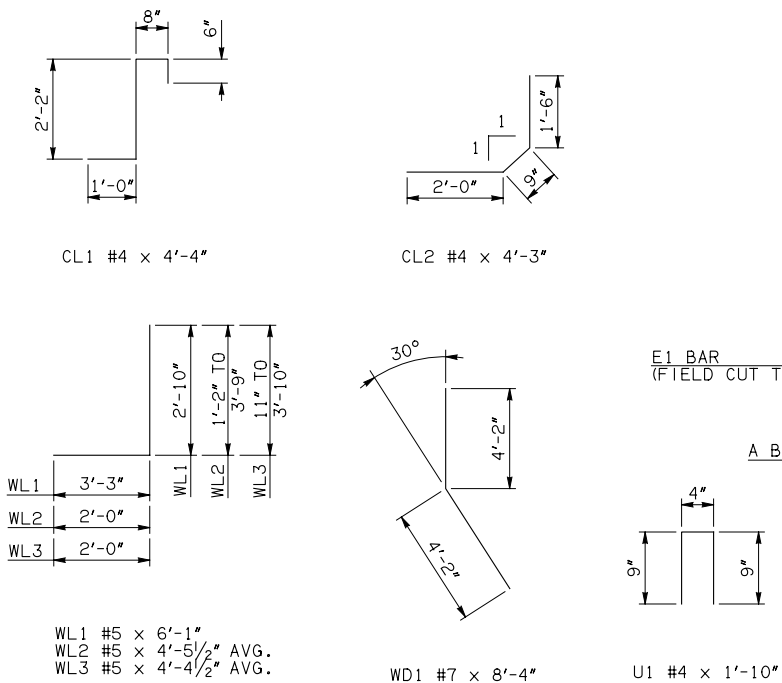
WING ELEVATION

NOTE: F.F. = FAR FACE  
N.F. = NEAR FACE

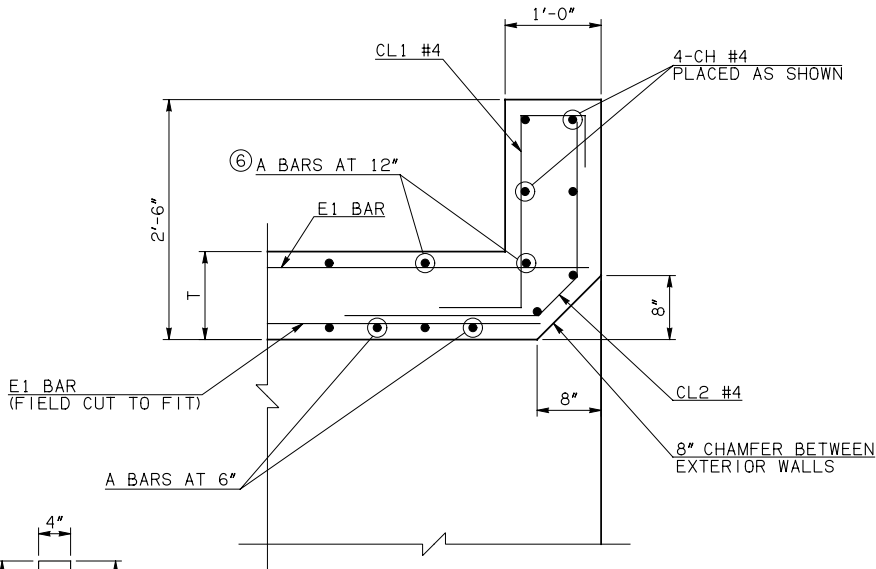
WINGWALL BAR LIST (LONG AND SHORT WING INCLUDED)						
MARK	SIZE	QTY.	FORM	LENGTH	REMARKS	
WD1	#7	10	BNT	8'-4"		
WH1	#4	2	STR	13'-4"		
① WH2	#4	8	STR	7'-2" AVG.	3'-2" TO 11'-2"	
WH3	#5	2	STR	13'-1"		
WH4	#4	2	STR	26'-3"		
① WH5	#4	8	STR	13'-7½" AVG.	5'-5" TO 21'-10"	
WH6	#5	2	STR	25'-8"		
WL1	#5	26	BNT	6'-1"		
WL2	#5	8	BNT	4'-5½" AVG.	3'-2" TO 5'-9"	
WL3	#5	17	BNT	4'-4½" AVG.	2'-11" TO 5'-10"	
WT1	#4	17	STR	2'-10"		
WT2	#4	5	STR	5'-0"		
WT3	#4	4	STR	4'-3" AVG.	3'-8" TO 4'-10"	
WT4	#4	8	STR	2'-5½" AVG.	1'-2" TO 3'-9"	
WT5	#4	8	STR	4'-3" AVG.	3'-7" TO 4'-11"	
WT6	#4	17	STR	2'-4½" AVG.	11" TO 3'-10"	
WV1	#5	4	STR	5'-0"		
WV2	#5	4	STR	4'-3" AVG.	3'-8" TO 4'-10"	
WV3	#5	8	STR	4'-3" AVG.	3'-7" TO 4'-11"	
U1	#4	2	BNT	1'-10"		



TYPICAL SECTION THRU WING



② HEADWALL DETAIL AT EXTERIOR WALL



② HEADWALL DETAIL AT MIDSPAN

DIMENSION SHOWN NORMAL TO HEADWALL

NOTES:

- ① QUANTITY SHOWN REPRESENTS TWO SETS.
- ② FOR FURTHER INFORMATION REGARDING END SECTION BARS A, B, C, E1, AND E2, REFER TO RCB CULVERT - BARREL DETAILS.
- ③ 10' SPAN ONLY

HEADWALL BAR LIST													
ONE HEADWALL SHOWN													
MARK	FORM	3' SPAN			4' SPAN			5' SPAN			6' SPAN		
		SIZE	QTY.	LENGTH	SIZE	QTY.	LENGTH	SIZE	QTY.	LENGTH	SIZE	QTY.	LENGTH
CH	STR	#4	4	5'-0"	#4	4	6'-2"	#4	4	7'-2"	#4	4	8'-6"
CL1	BNT	#4	6	4'-4"	#4	7	4'-4"	#4	8	4'-4"	#4	9	4'-4"
CL2	BNT	#4	6	4'-3"	#4	7	4'-3"	#4	8	4'-3"	#4	9	4'-3"
HD	STR	#6	2	5'-0"	#6	2	6'-2"	#6	2	7'-2"	#6	2	8'-6"

APPROVED BY BRIDGE ENGINEER	<i>Robert J. Nisch</i>	DATE	4/09/09
<b>OKLAHOMA DEPT. OF TRANSPORTATION</b> <b>BRIDGE STANDARD (ENGLISH)</b> <b>RCB CULVERTS - END SECTION DETAILS</b> <b>SINGLE CELL - 3'-0" HEIGHT - 30°</b> SHEET NO. 3 OF 3			
1999 SPECIFICATIONS	RCB-E1-H3-30-3	OOE	B-665E