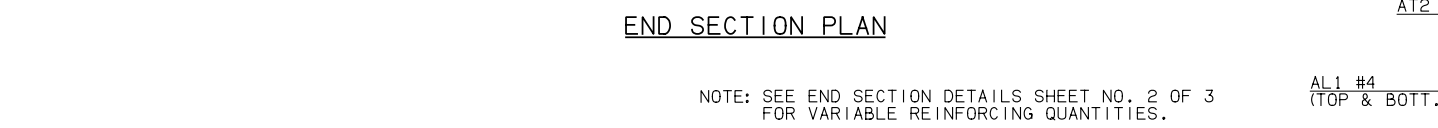
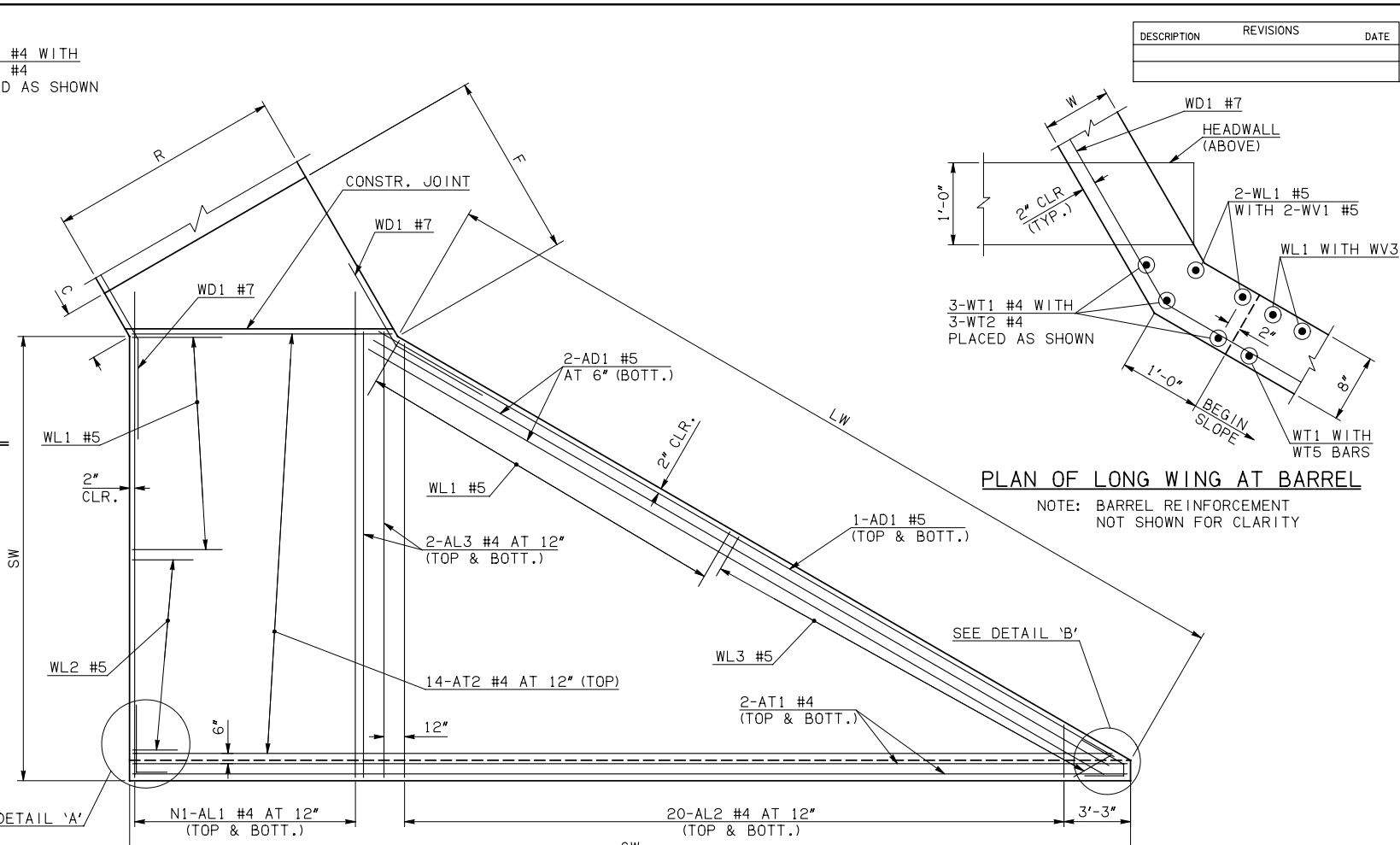
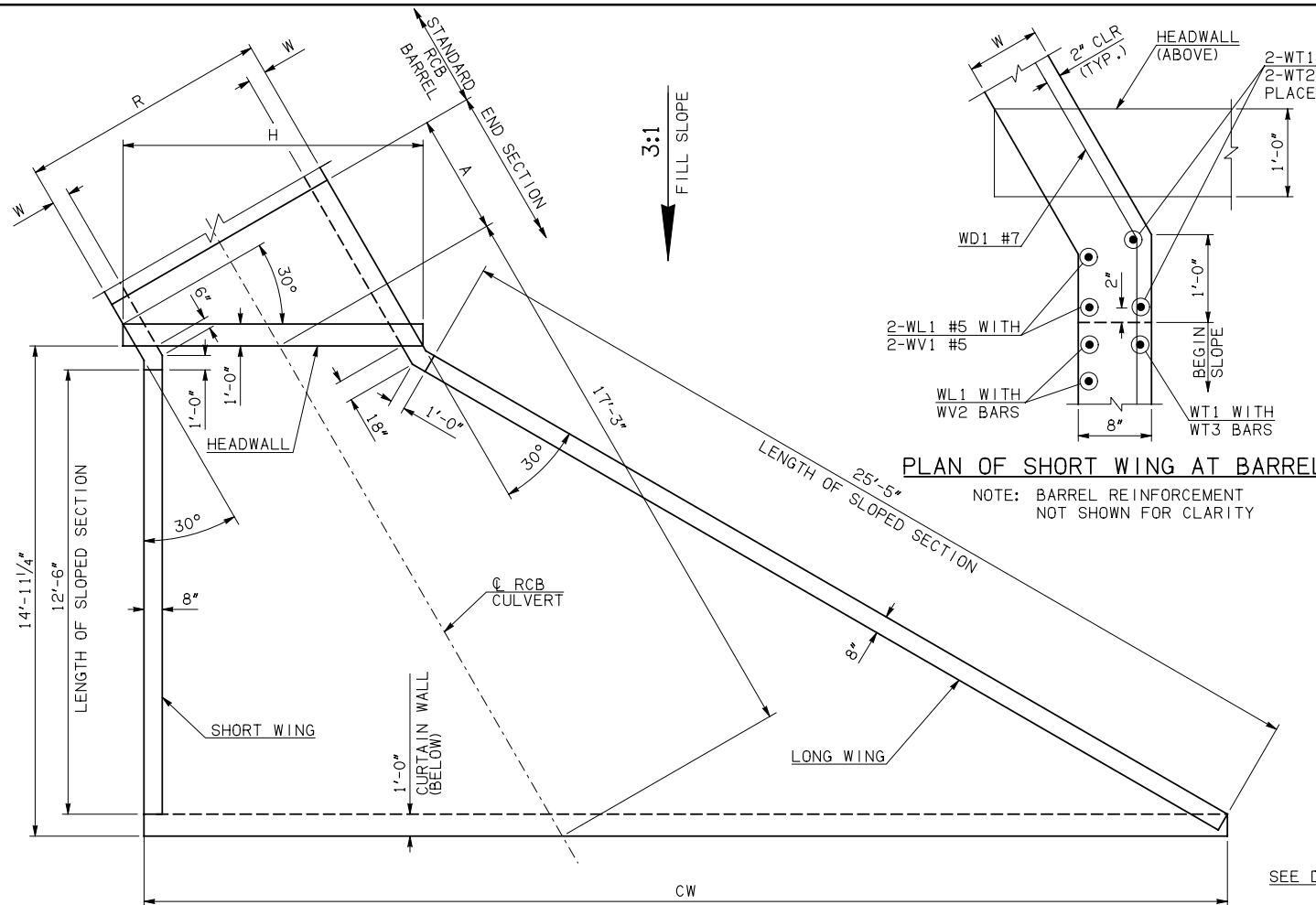
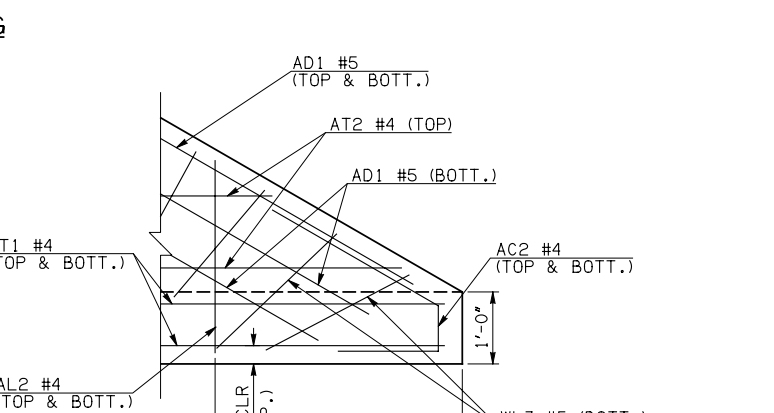
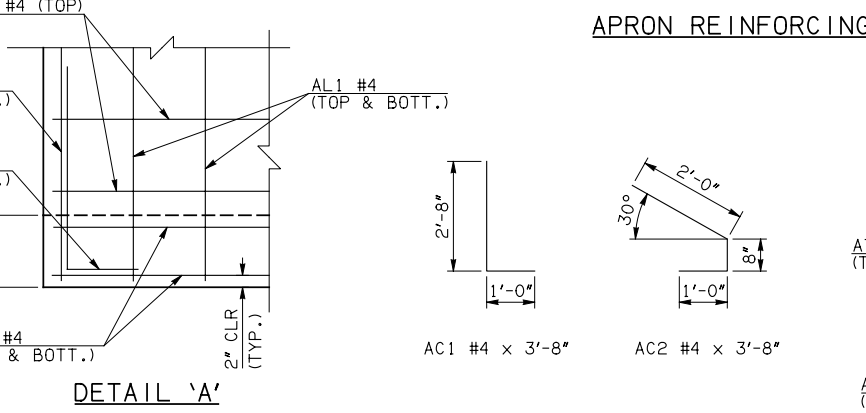


DESCRIPTION	REVISIONS	DATE



SPAN	W	A	B	C	CW	D	E	F	G	H	LW	R	SW
3'	7"	4'-0"	2'-9 1/2"	3'-3 3/4"	27'-10 1/4"	3'-7 1/2"	5'-2 1/2"	6'-0 1/2"	6'-4 1/2"	5'-4 3/4"	26'-5"	4'-2"	14'-5 3/4"
4'	7"	4'-0"	2'-6"	3'-0 1/4"	29'-0"	3'-4 1/4"	5'-6"	6'-4"	6'-7 3/4"	6'-6 1/2"	26'-5"	5'-2"	14'-5 3/4"
5'	6"	4'-0"	2'-3 1/4"	2'-7"	30'-1 3/4"	3'-0 3/4"	5'-8 3/4"	6'-5 3/4"	6'-11 1/4"	7'-6"	26'-7"	6'-0"	14'-7 3/4"
6'	7"	5'-0"	2'-11 1/4"	3'-5 1/4"	31'-3 3/4"	3'-9 1/4"	7'-0 3/4"	7'-11"	8'-2 3/4"	8'-10 1/4"	26'-5"	7'-2"	14'-5 3/4"
8'	10"	5'-0"	2'-2 1/2"	3'-3 1/2"	33'-7 1/2"	3'-2 1/4"	7'-9 1/2"	8'-11"	8'-9 3/4"	11'-8 3/4"	25'-11"	9'-8"	13'-11 3/4"
10'	10"	6'-0"	2'-7 1/2"	3'-8 3/4"	35'-11 1/4"	3'-7 1/4"	9'-4 1/2"	10'-6"	10'-4 3/4"	14'-0 1/2"	25'-11"	11'-8"	13'-11 3/4"



MARK	SIZE	FORM	ONE APRON SHOWN																	
			3' SPAN			4' SPAN			5' SPAN			6' SPAN			8' SPAN			10' SPAN		
QTY.	LENGTH	REMARKS	QTY.	LENGTH	REMARKS	QTY.	LENGTH	REMARKS	QTY.	LENGTH	REMARKS	QTY.	LENGTH	REMARKS	QTY.	LENGTH	REMARKS	QTY.	LENGTH	REMARKS
AC1	#4	BNT	2	3'-8"		2	3'-8"		2	3'-8"		2	3'-8"		2	3'-8"		2	3'-8"	
AC2	#4	BNT	2	3'-8"		2	3'-8"		2	3'-8"		2	3'-8"		2	3'-8"		2	3'-8"	
AD1	#5	STR	4	27'-6"		4	27'-6"		4	27'-6"		4	27'-6"		4	27'-6"		4	27'-6"	
AL1	#4	STR	8	16'-9"		10	16'-9"		12	16'-9"		14	16'-9"		20	16'-9"		24	16'-9"	
AL2	#4	STR	40	7'-11 1/2" AVG.	2'-6" TO 13'-5"	40	7'-11 1/2" AVG.	2'-6" TO 13'-5"	40	7'-11 1/2" AVG.	2'-6" TO 13'-5"	40	7'-11 1/2" AVG.	2'-6" TO 13'-5"	40	7'-11 1/2" AVG.	2'-6" TO 13'-5"	40	7'-11 1/2" AVG.	2'-6" TO 13'-5"
AL3	#4	STR	4	14'-9"		4	14'-9"		4	14'-9"		4	14'-9"		4	14'-9"		4	14'-9"	
AT1	#4	STR	4	27'-6"		4	28'-8"		4	29'-9"		4	30'-11"		4	33'-3"		4	35'-7"	
AT2	#4	STR	14	15'-6" AVG.	4'-3" TO 26'-9"	14	16'-7 1/2" AVG.	5'-4" TO 27'-11"	14	17'-9" AVG.	6'-6" TO 29'-0"	14	18'-11" AVG.	7'-8" TO 30'-2"	14	21'-3" AVG.	10'-0" TO 32'-6"	14	23'-7" AVG.	12'-4" TO 34'-10"

① QUANTITY SHOWN REPRESENTS TWO SETS.

APPROVED BY BRIDGE ENGINEER *Robert J. Muech* DATE 4/09/09

OKLAHOMA DEPT. OF TRANSPORTATION
BRIDGE STANDARD ENGLISH
 RCB CULVERTS - END SECTION DETAILS
 SINGLE CELL - 3'-0" HEIGHT - 30°
 SHEET NO. 1 OF 3

1999 SPECIFICATIONS RCB-E1-H3-30-1 OOE B-663E