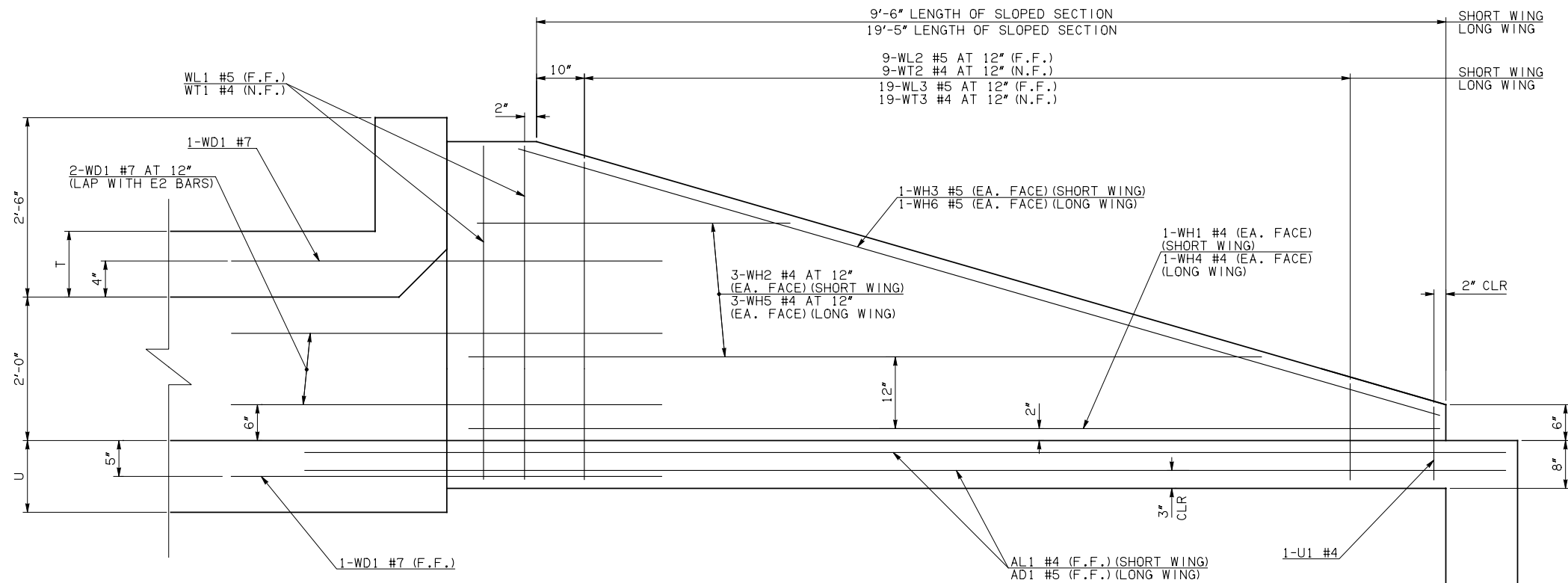


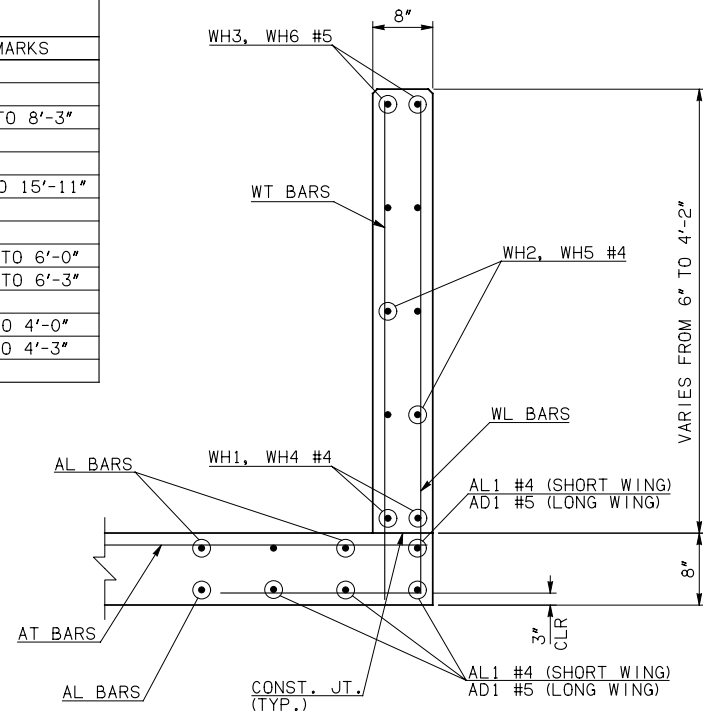
DESCRIPTION	REVISIONS	DATE



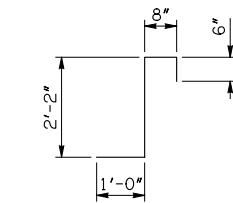
NOTE: F.F. = FAR FACE  
N.F. = NEAR FACE

WING ELEVATION

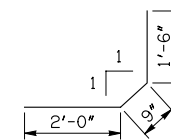
WINGWALL BAR LIST (LONG AND SHORT WING INCLUDED)					
MARK	SIZE	QTY.	FORM	LENGTH	REMARKS
WD1	#7	8	BNT	8'-4"	
WH1	#4	2	STR	10'-4"	
WH2	#4	6	STR	5'-7 1/2" AVG.	3'-0" TO 8'-3"
WH3	#5	2	STR	10'-0"	
WH4	#4	2	STR	20'-3"	
WH5	#4	6	STR	10'-7" AVG.	5'-3" TO 15'-11"
WH6	#5	2	STR	19'-7"	
WL1	#5	4	BNT	6'-5"	
WL2	#5	9	BNT	4'-5 1/2" AVG.	2'-11" TO 6'-0"
WL3	#5	19	BNT	4'-6 1/2" AVG.	2'-10" TO 6'-3"
WT1	#4	5	STR	4'-5"	
WT2	#4	9	STR	2'-5 1/2" AVG.	11" TO 4'-0"
WT3	#4	19	STR	2'-6 1/2" AVG.	10" TO 4'-3"
U1	#4	2	BNT	1'-10"	



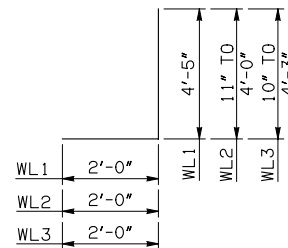
TYPICAL SECTION THRU WING



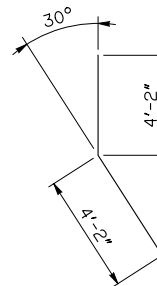
CL1 #4 x 4'-4"



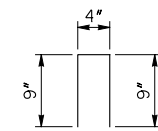
CL2 #4 x 4'-3"



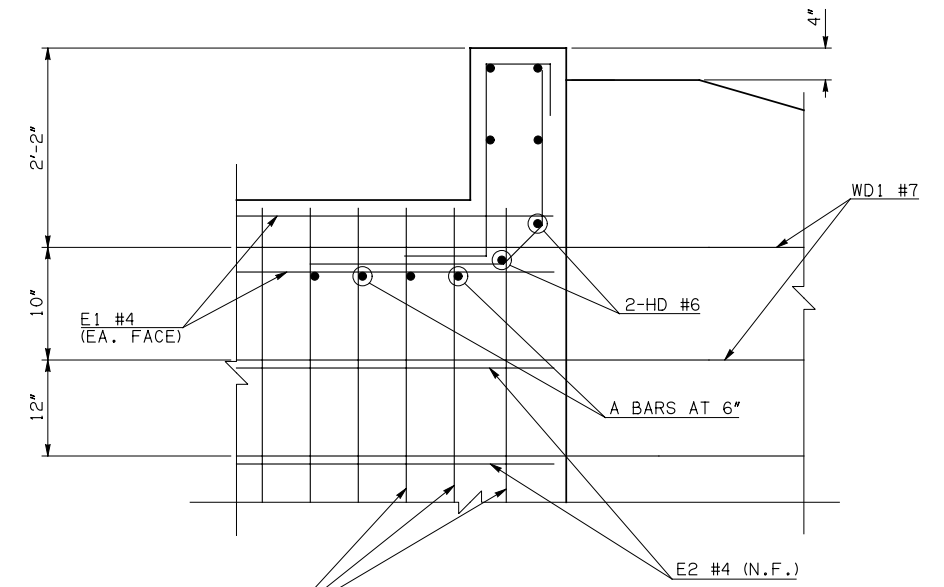
WL1 #5 x 6'-5"  
WL2 #5 x 4'-5 1/2" AVG.  
WL3 #5 x 4'-6 1/2" AVG.



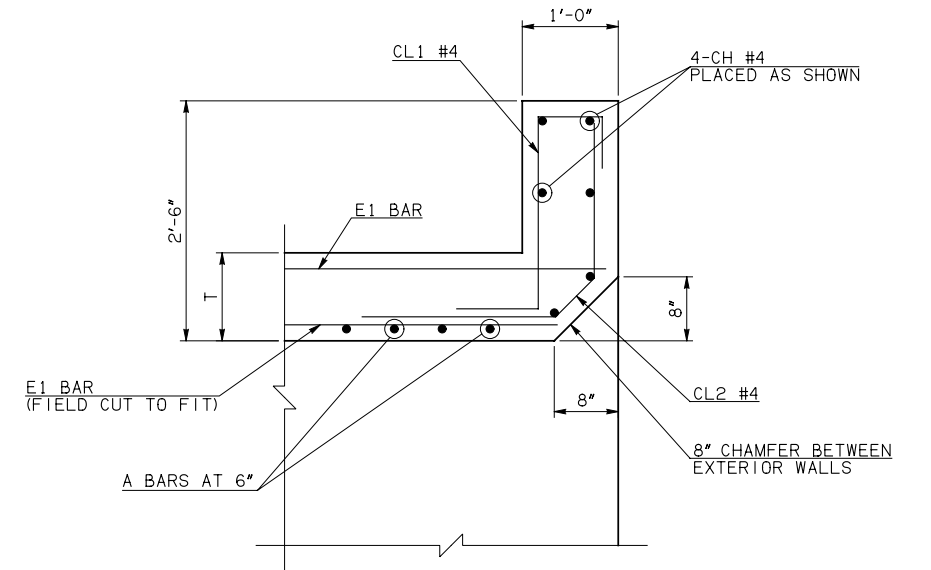
WD1 #7 x 8'-4"



U1 #4 x 1'-10"



HEADWALL DETAIL AT EXTERIOR WALL



HEADWALL DETAIL AT MIDSPAN

DIMENSION SHOWN NORMAL TO HEADWALL

NOTES:

- ① QUANTITY SHOWN REPRESENTS TWO SETS.
- ② FOR FURTHER INFORMATION REGARDING END SECTION BARS A, B, C, E1, AND E2, REFER TO RCB CULVERT - BARREL DETAILS.

APPROVED BY BRIDGE ENGINEER *Robert J. Muech* DATE 4/09/09

OKLAHOMA DEPT. OF TRANSPORTATION  
BRIDGE STANDARD (ENGLISH)  
RCB CULVERTS - END SECTION DETAILS  
SINGLE CELL - 2'-0" HEIGHT - 30°  
SHEET NO. 3 OF 3