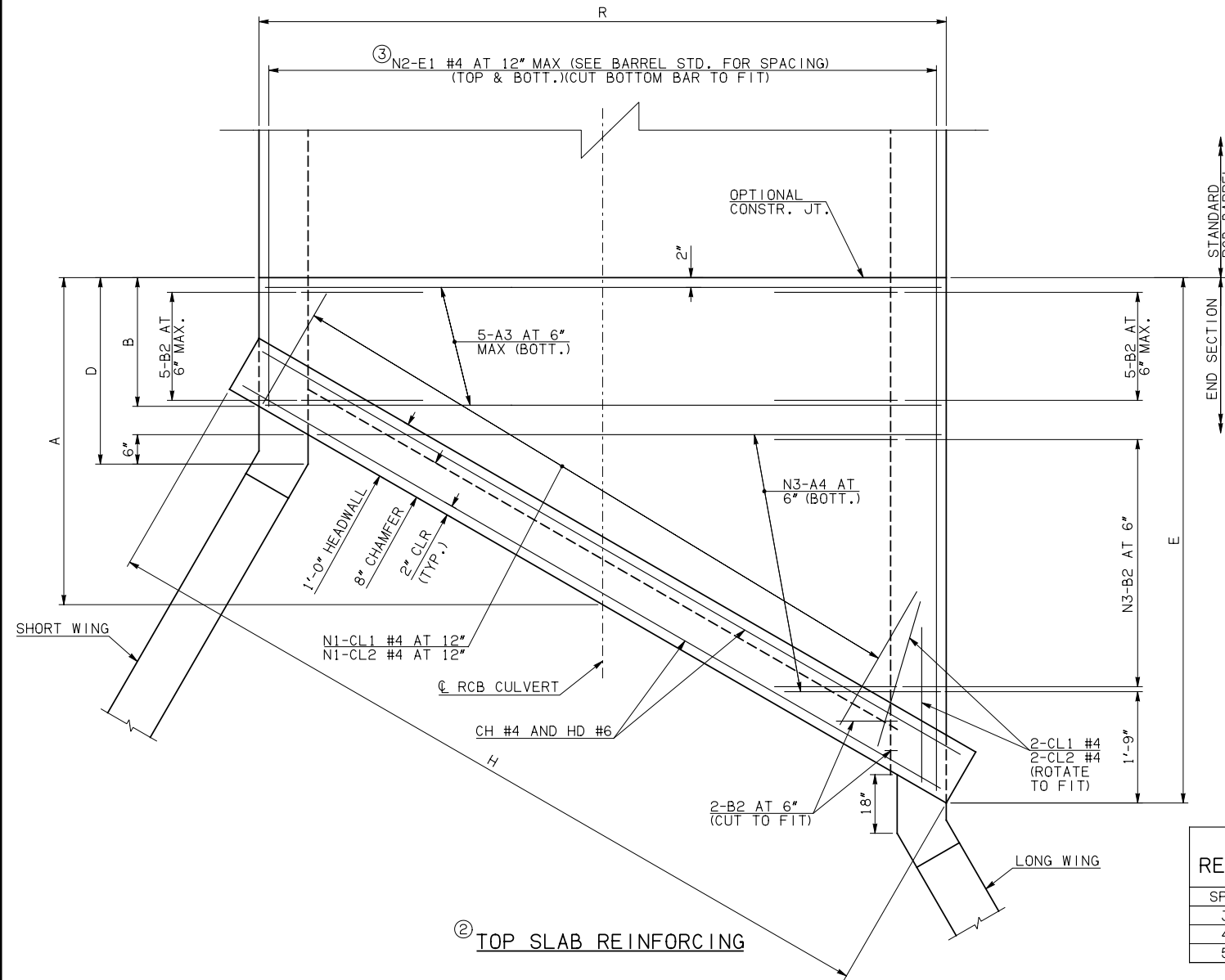
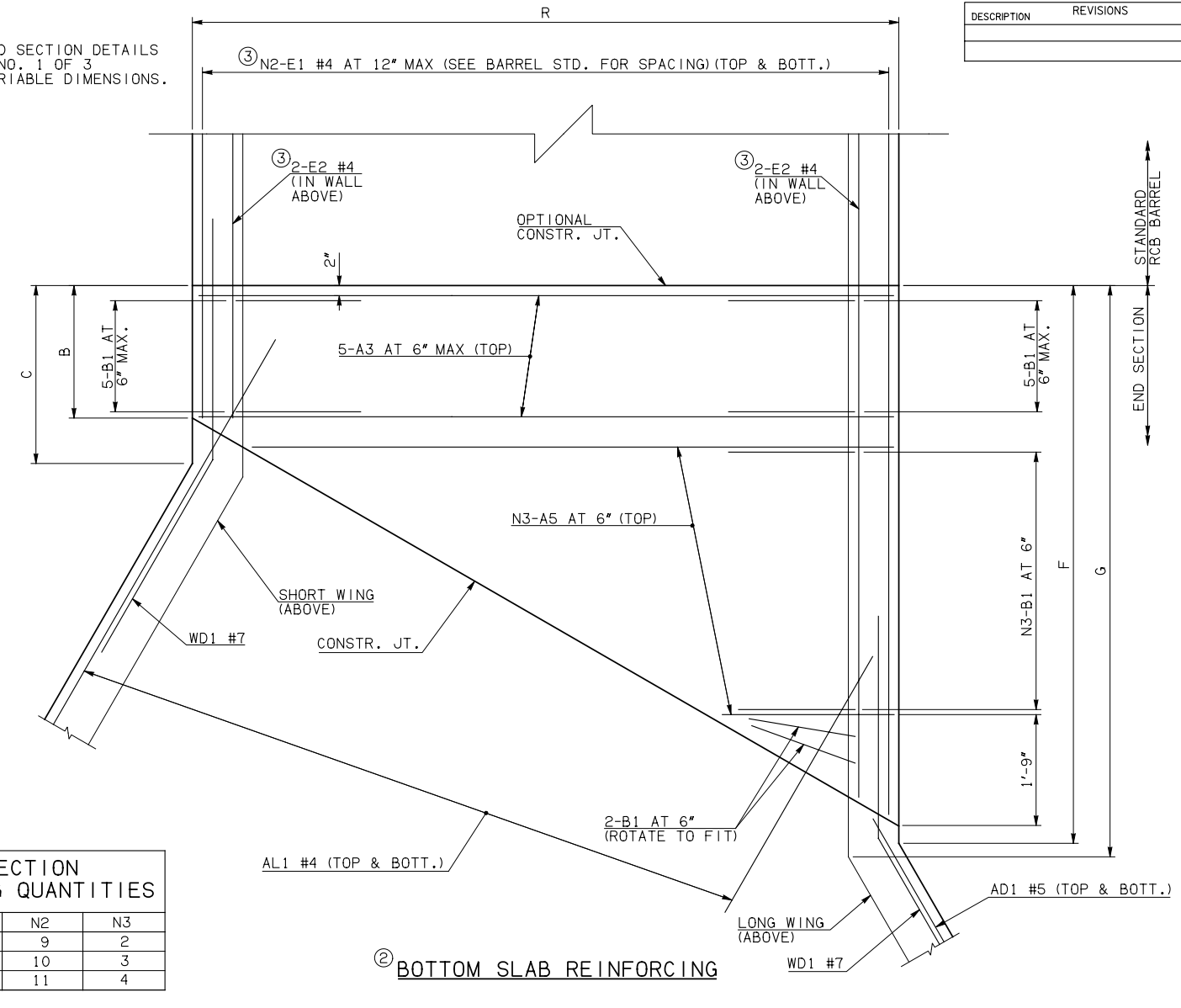


DESCRIPTION	REVISIONS	DATE



NOTE: SEE END SECTION DETAILS SHEET NO. 1 OF 3 FOR VARIABLE DIMENSIONS.



SPAN	N1	N2	N3
3'	3	9	2
4'	5	10	3
5'	6	11	4

END CONNECTION BAR LIST

MARK	FORM	ONE END CONNECTION SHOWN											
		3' SPAN				4' SPAN				5' SPAN			
SIZE	QTY.	LENGTH	REMARKS	SIZE	QTY.	LENGTH	REMARKS	SIZE	QTY.	LENGTH	REMARKS		
A3	STR	#5	10	3'-8"	#5	10	4'-10"	#6	10	5'-8"			
A4	STR	#5	2	1'-9 1/2" AVG.	1'-4" TO 2'-3"	#5	3	2'-2 1/2" AVG.	1'-4" TO 3'-1"	#6	4	2'-7 1/2" AVG.	1'-4" TO 3'-11"
A5	STR	#5	2	2'-11" AVG.	2'-6" TO 3'-4"	#5	3	3'-4 1/2" AVG.	2'-6" TO 4'-3"	#6	4	3'-9 1/2" AVG.	2'-6" TO 5'-1"
B1	BNT	#4	14	2'-5"		#4	15	2'-6"		#4	16	2'-7"	
B2	BNT	#4	14	3'-1"		#4	15	3'-2"		#4	16	3'-3"	
E1	STR	#4	18	3'-9" AVG.	2'-8" TO 4'-10"	#4	20	3'-9" AVG.	2'-4" TO 5'-2"	#4	22	3'-9 1/2" AVG.	2'-2" TO 5'-5"
E2	STR	#4	4	3'-8 1/2" AVG.	2'-8" AND 4'-9"	#4	4	3'-8" AVG.	2'-4" AND 5'-0"	#4	4	3'-9" AVG.	2'-2" AND 5'-4"

QUANTITIES

ITEM	UNIT	3' SPAN	4' SPAN	5' SPAN
CLASS AA CONCRETE	CY	7.60	8.50	9.00
REINFORCING STEEL	LB	1220.00	1320.00	1430.00

NOTE: QUANTITIES ABOVE ARE FOR ONE END SECTION, WHICH IS COMPRISED OF ONE END CONNECTION, ONE HEADWALL, ONE APRON, AND TWO WINGWALLS.

NOTES: ① QUANTITY SHOWN REPRESENTS TWO SETS.

② FOR FURTHER INFORMATION REGARDING END SECTION BARS A, B, C, E1, AND E2, REFER TO RCB CULVERT - BARREL DETAILS.

③ LENGTHS OF E1 & E2 BARS SHOWN ARE ADDITIONAL LENGTHS REQUIRED FOR THE END SECTION. LAP SPLICES, AS REQUIRED, SHALL BE IN ACCORDANCE WITH RCB BARREL STANDARD NOTES.

④ 2-SETS OF N2-E1 BARS REQUIRED.

⑤ QUANTITY SHOWN REPRESENTS 2-SETS OF E2 BARS WITH LENGTHS AS SHOWN CORRESPONDING TO SHORT EXTERIOR WALL AND LONG EXTERIOR WALL.

APPROVED BY BRIDGE ENGINEER *Robert J. Muech* DATE 4/09/09

OKLAHOMA DEPT. OF TRANSPORTATION
BRIDGE STANDARD (ENGLISH)
RCB CULVERTS - END SECTION DETAILS
SINGLE CELL - 2'-0" HEIGHT - 30°
SHEET NO. 2 OF 3

1999 SPECIFICATIONS	RCB-E1-H2-30-2	OOE
---------------------	----------------	-----