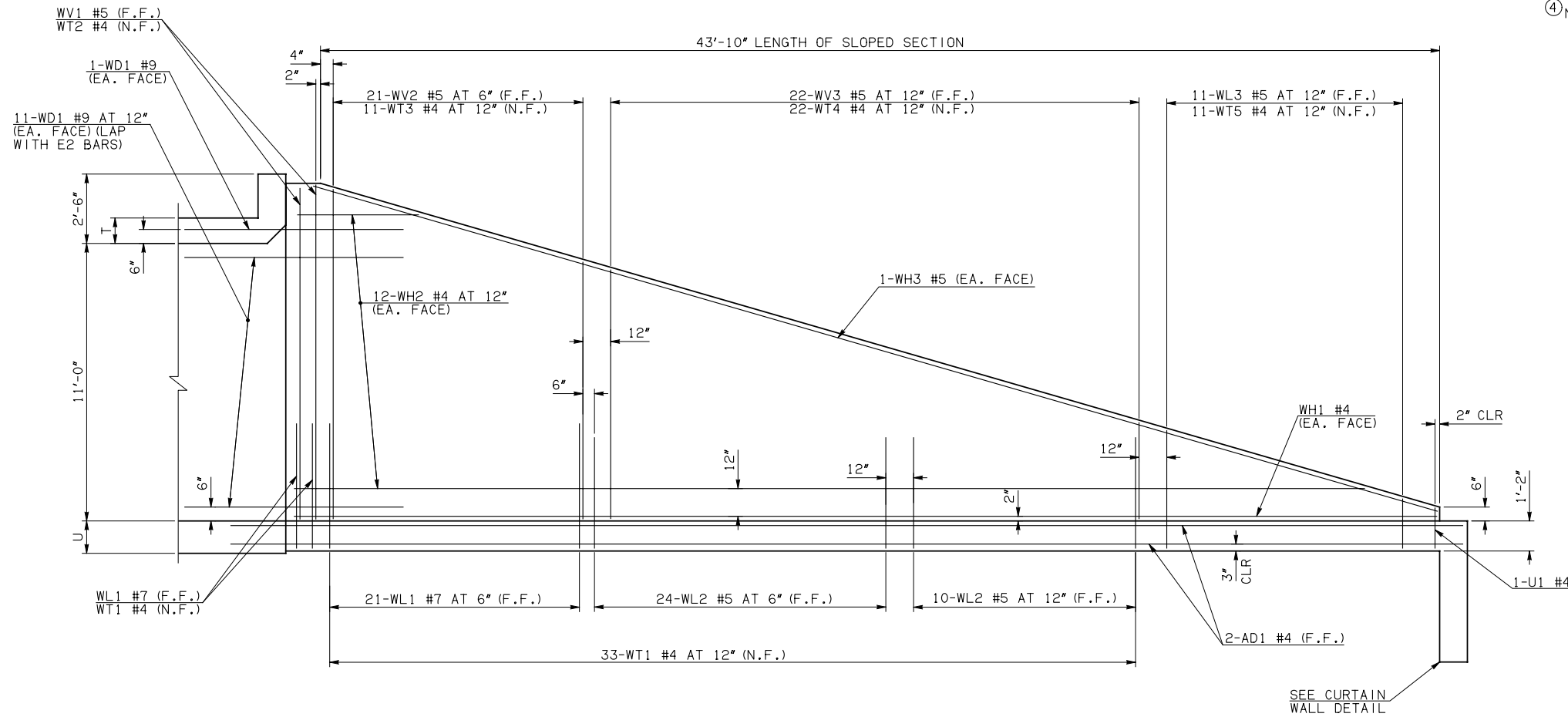


DESCRIPTION	REVISIONS	DATE

④ NOTE: TO CONSTRUCT ONE END SECTION AS SHOWN, THE FOLLOWING BARS ARE REQUIRED IN ADDITION TO THOSE CALLED IN THE RCB BARREL STANDARD:

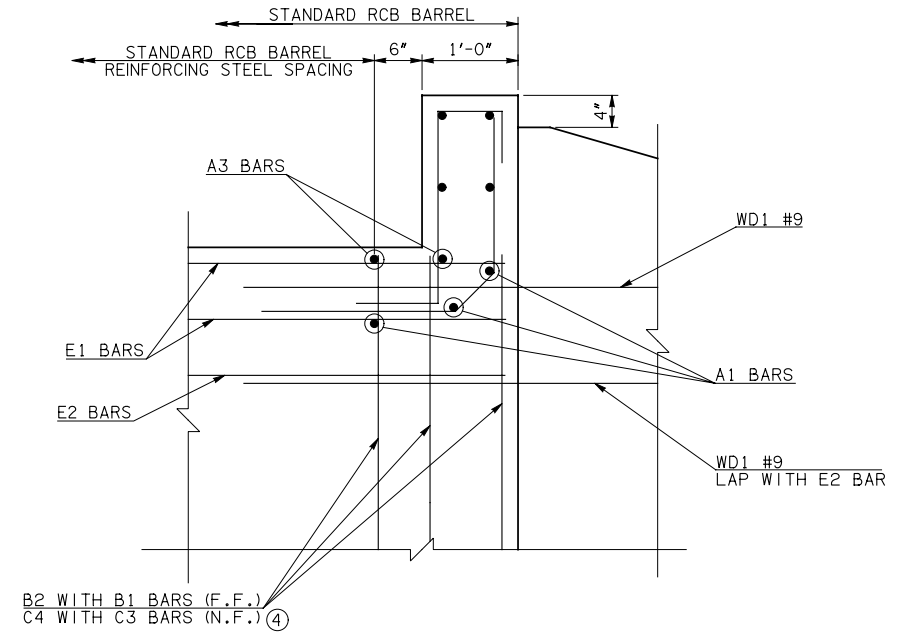
2-C3 BARS
2-C4 BARS
ADDITIONAL WEIGHT IS INCLUDED IN QUANTITIES.



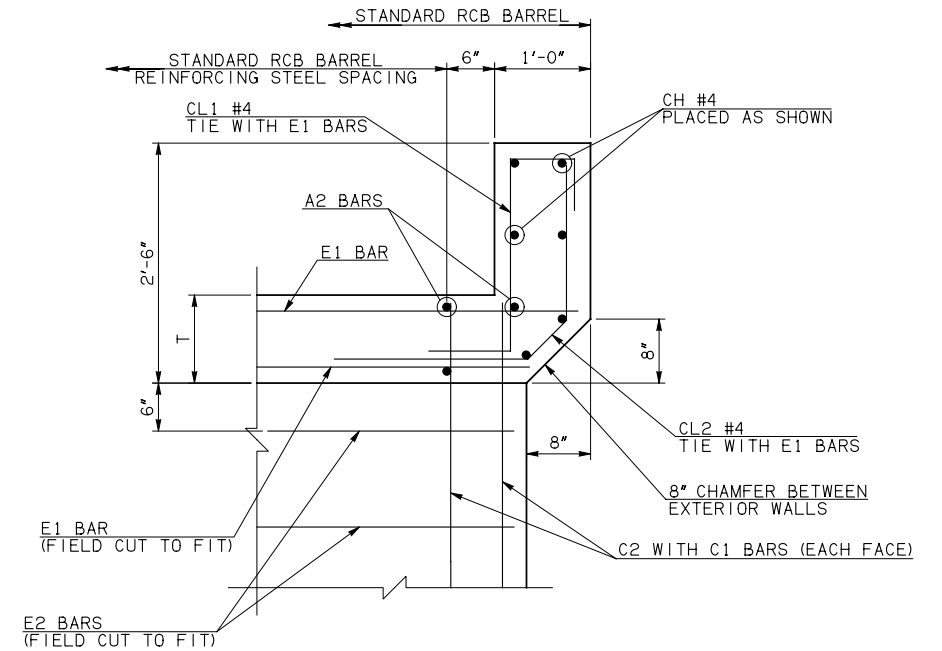
NOTE: F.F. = FAR FACE
N.F. = NEAR FACE

WING ELEVATION

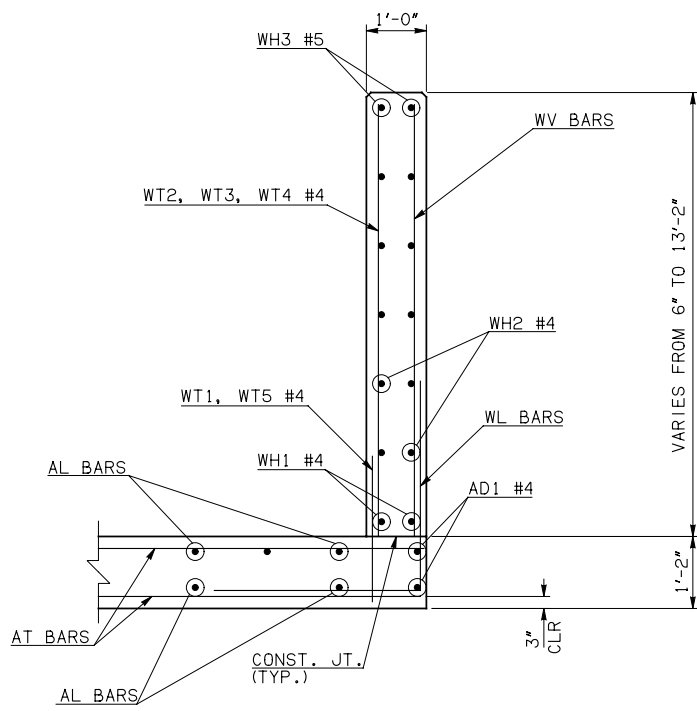
SEE CURTAIN WALL DETAIL



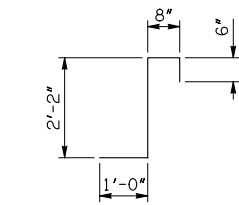
HEADWALL DETAIL AT EXTERIOR WALL



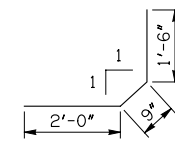
HEADWALL DETAIL AT INTERIOR WALL



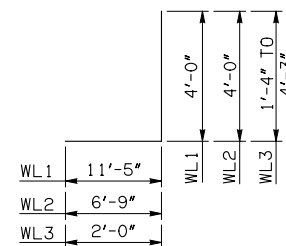
TYPICAL SECTION THRU WING



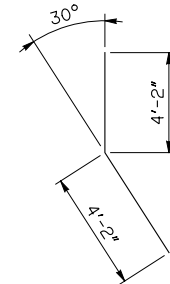
CL1 #4 x 4'-4"



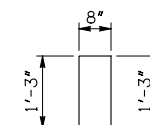
CL2 #4 x 4'-3"



WL1 #7 x 15'-5"
WL2 #5 x 10'-9"
WL3 #5 x 4'-9/2" AVG.



WD1 #9 x 8'-4"



U1 #4 x 3'-2"

APPROVED BY BRIDGE ENGINEER *Robert J. Nusch* DATE 4/09/09

OKLAHOMA DEPT. OF TRANSPORTATION
BRIDGE STANDARD (ENGLISH)
RCB CULVERTS - END SECTION DETAILS
TRIPLE CELL - 11'-0" HEIGHT - 0°
SHEET NO. 2 OF 2

1999 SPECIFICATIONS

RCB-E3-H11-0-2

OOE

B-645E