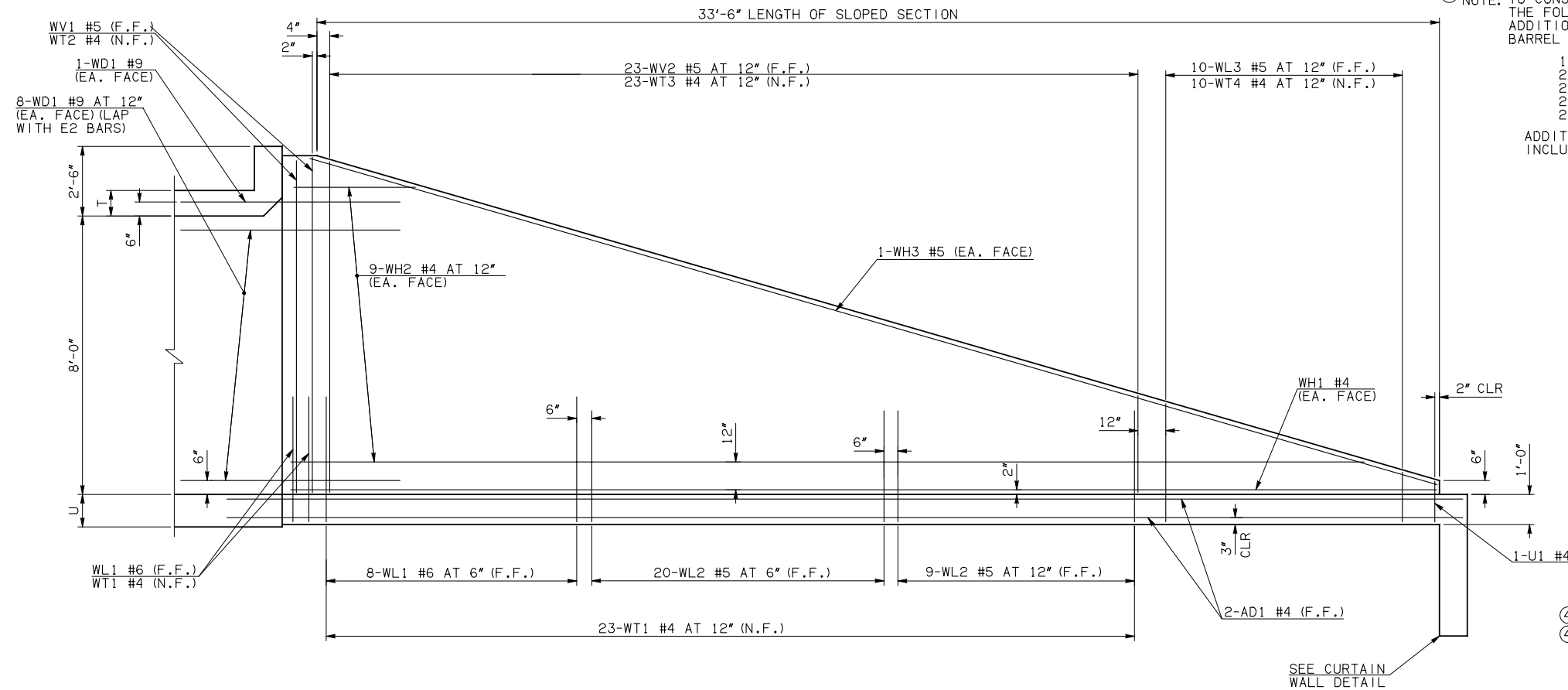


DESCRIPTION	REVISIONS	DATE

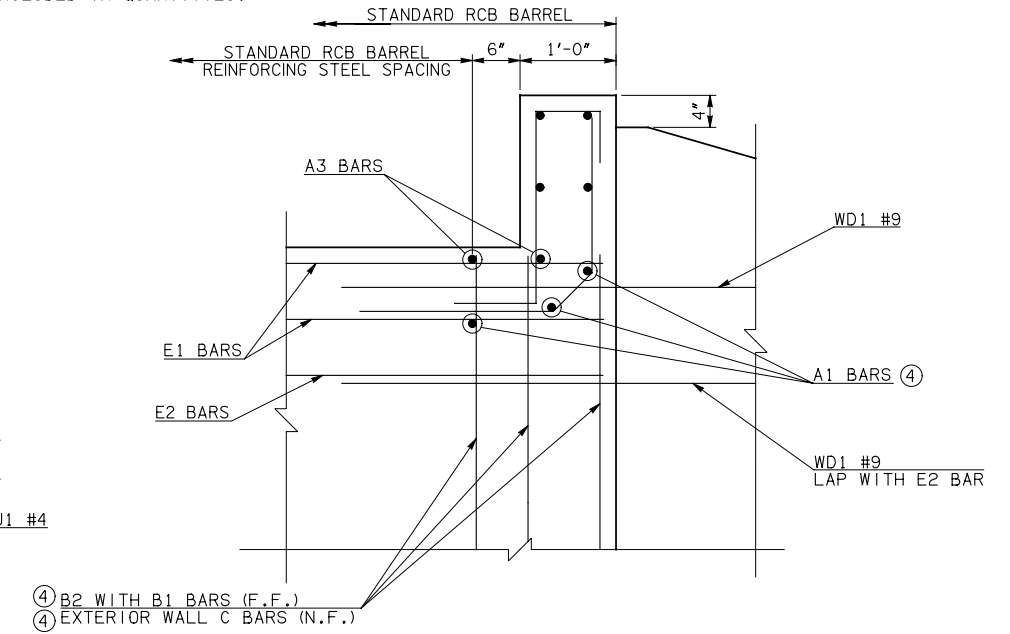
④ NOTE: TO CONSTRUCT ONE END SECTION AS SHOWN, THE FOLLOWING BARS ARE REQUIRED IN ADDITION TO THOSE CALLED IN THE RCB BARREL STANDARD:

- 1-A1 BAR
  - 2-B1 BARS
  - 2-B2 BARS
  - 2-EXTERIOR WALL C BARS
  - 2-EXTERIOR WALL C DOWEL BARS
- ADDITIONAL WEIGHT IS INCLUDED IN QUANTITIES.

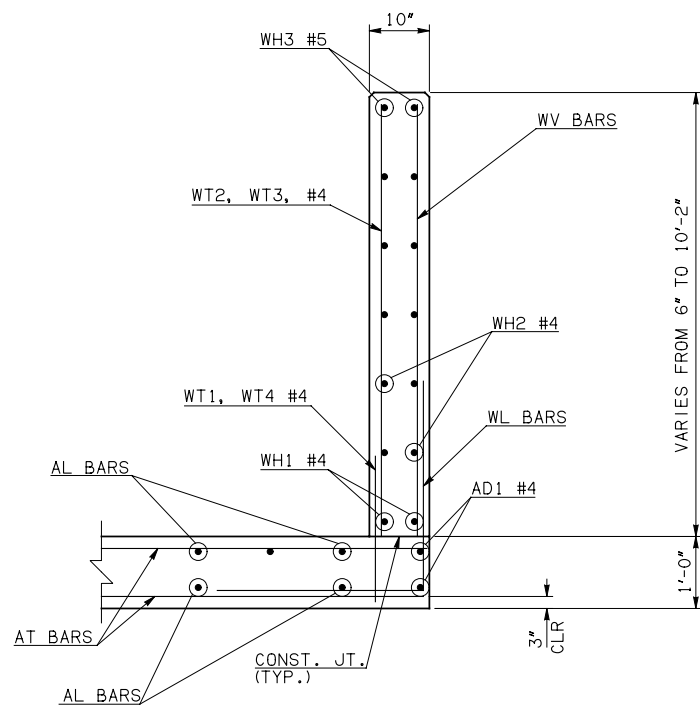


NOTE: F.F. = FAR FACE  
N.F. = NEAR FACE

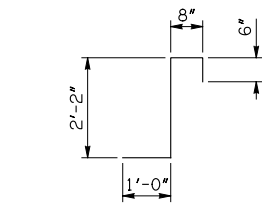
**WING ELEVATION**



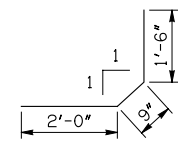
**HEADWALL DETAIL AT EXTERIOR WALL**



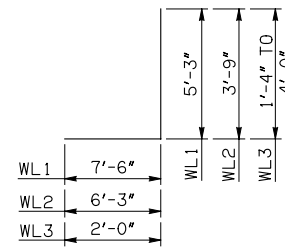
**TYPICAL SECTION THRU WING**



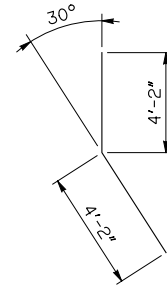
CL1 #4 x 4'-4"



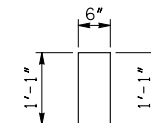
CL2 #4 x 4'-3"



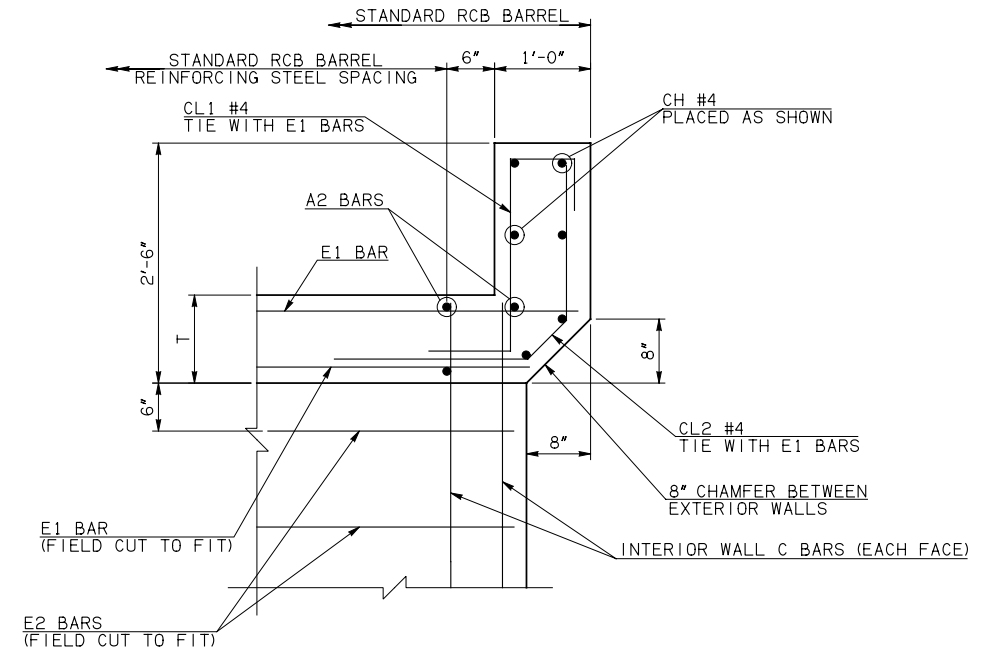
WL1 #6 x 12'-9"  
WL2 #5 x 10'-0"  
WL3 #5 x 4'-8" AVG.



WD1 #9 x 8'-4"



U1 #4 x 2'-8"



**HEADWALL DETAIL AT INTERIOR WALL**

APPROVED BY BRIDGE ENGINEER *Robert J. Muech* DATE 4/09/09

**OKLAHOMA DEPT. OF TRANSPORTATION**  
**BRIDGE STANDARD (ENGLISH)**  
**RCB CULVERTS - END SECTION DETAILS**  
**TRIPLE CELL - 8'-0" HEIGHT - 0°**  
SHEET NO. 2 OF 2

1999 SPECIFICATIONS	RCB-E3-H8-0-2	OOE
---------------------	---------------	-----