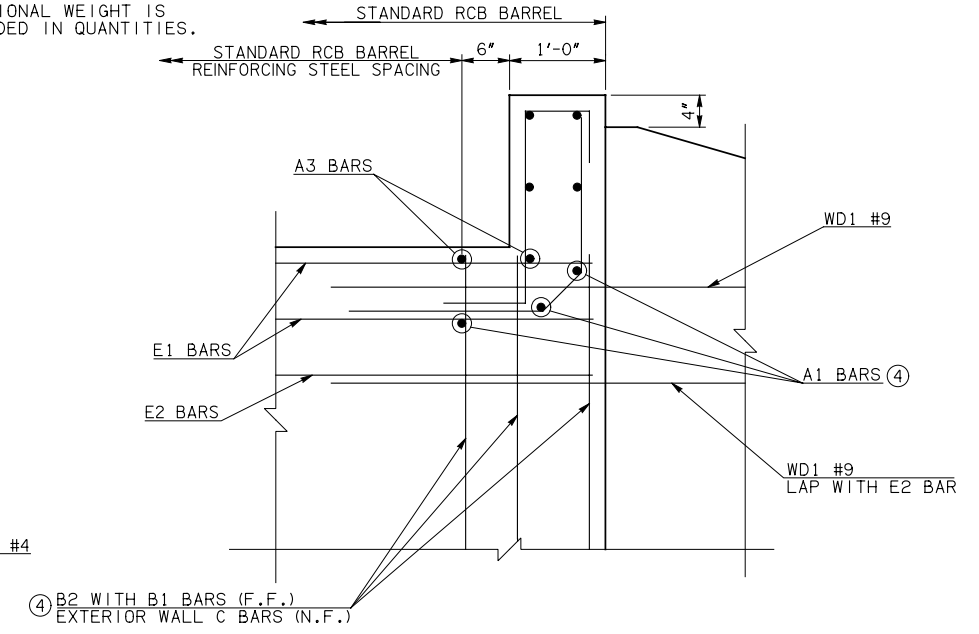


DESCRIPTION	REVISIONS	DATE

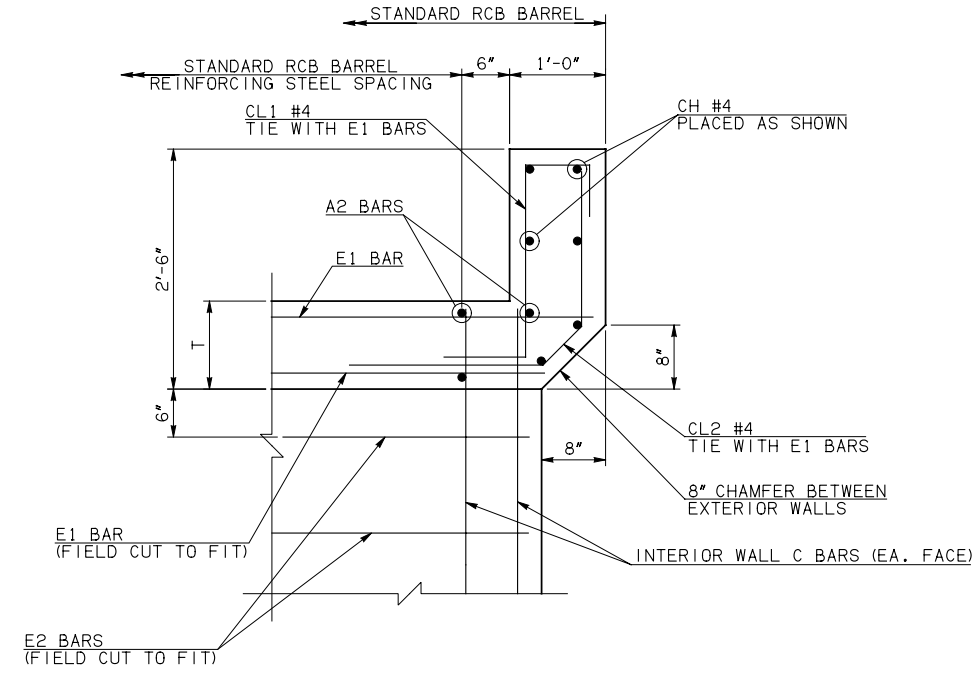
④ NOTE: TO CONSTRUCT ONE END SECTION AS SHOWN, THE FOLLOWING BARS ARE REQUIRED IN ADDITION TO THOSE CALLED IN THE RCB BARREL STANDARD:

- 1-A1 BAR
- 2-B1 BARS
- 2-B2 BARS
- 2-EXTERIOR WALL C BARS
- 2-EXTERIOR WALL C DOWEL BARS

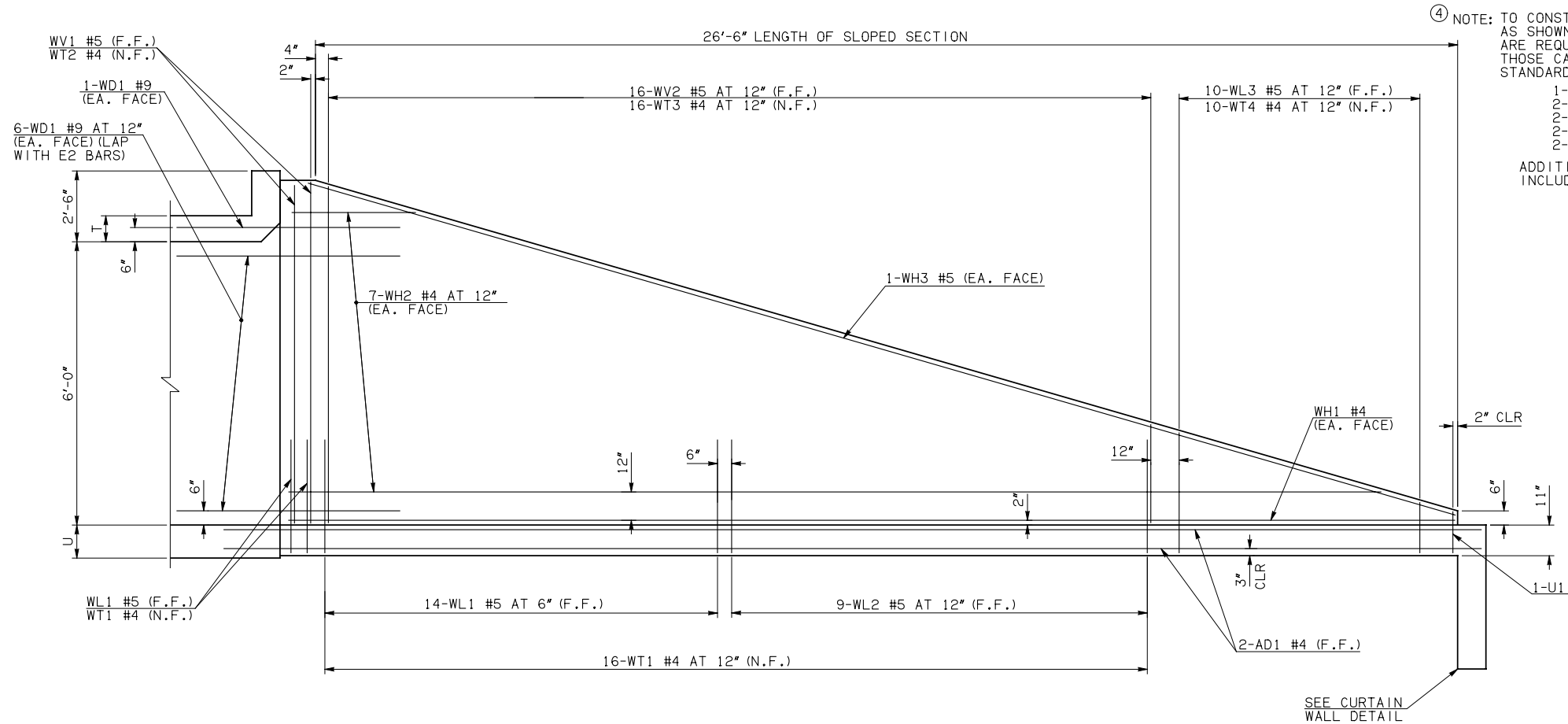
ADDITIONAL WEIGHT IS INCLUDED IN QUANTITIES.



HEADWALL DETAIL AT EXTERIOR WALL

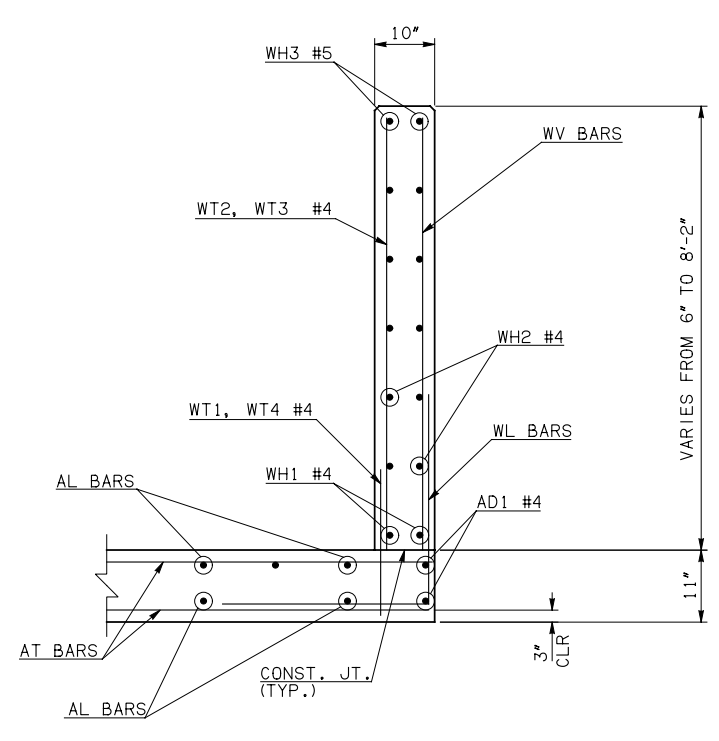


HEADWALL DETAIL AT INTERIOR WALL

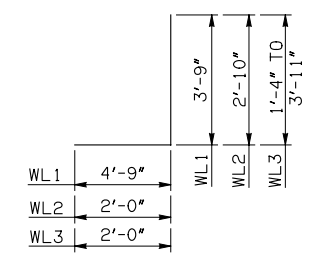
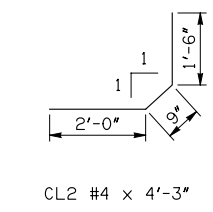
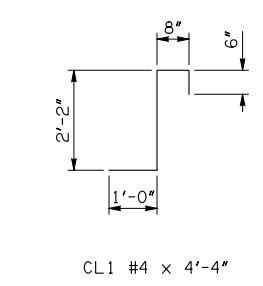


WING ELEVATION

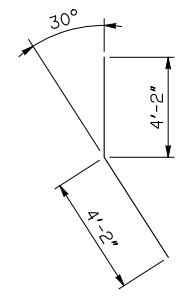
NOTE: F.F. = FAR FACE
N.F. = NEAR FACE



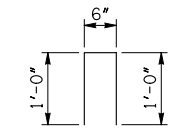
TYPICAL SECTION THRU WING



WL1 #5 x 8'-6"
WL2 #5 x 4'-10"
WL3 #5 x 4'-7 1/2" AVG.



WD1 #9 x 8'-4"



U1 #4 x 2'-6"

APPROVED BY BRIDGE ENGINEER *Debra J. Nusch* DATE 4/09/09

OKLAHOMA DEPT. OF TRANSPORTATION
BRIDGE STANDARD (ENGLISH)
RCB CULVERTS - END SECTION DETAILS
TRIPLE CELL - 6'-0" HEIGHT - 0°
SHEET NO. 2 OF 2

1999 SPECIFICATIONS	RCB-E3-H6-0-2	OOE
---------------------	---------------	-----

B-635E