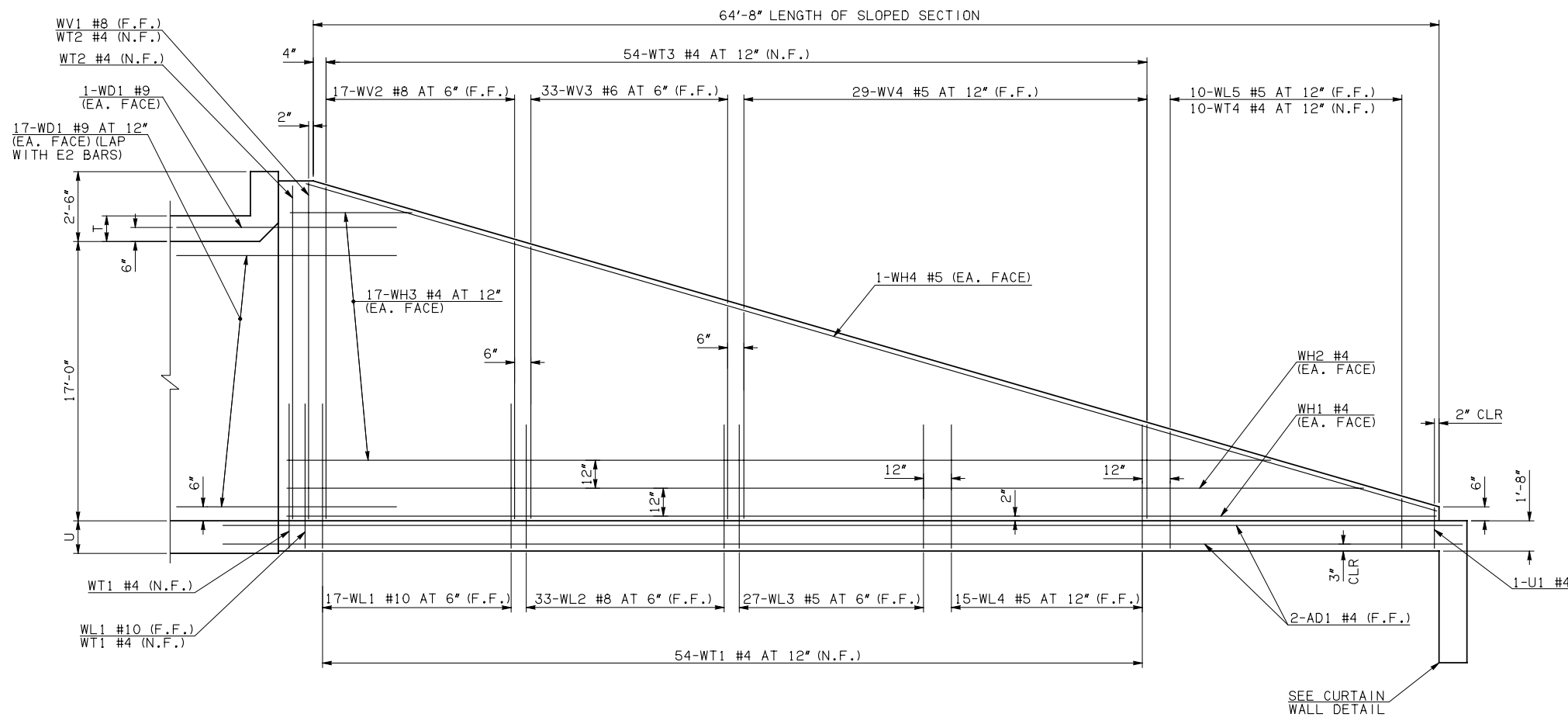
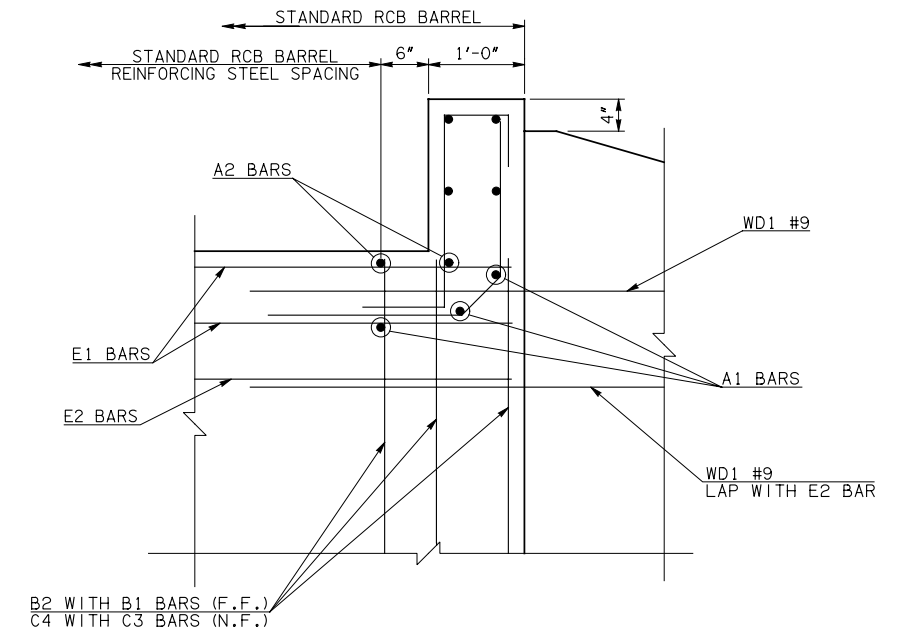


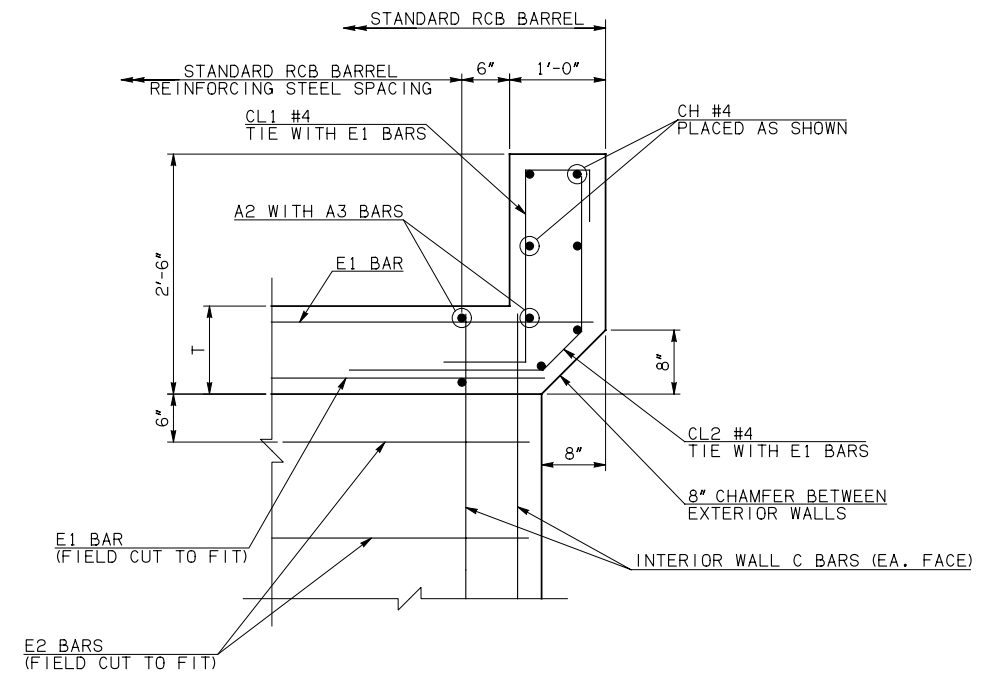
DESCRIPTION	REVISIONS	DATE



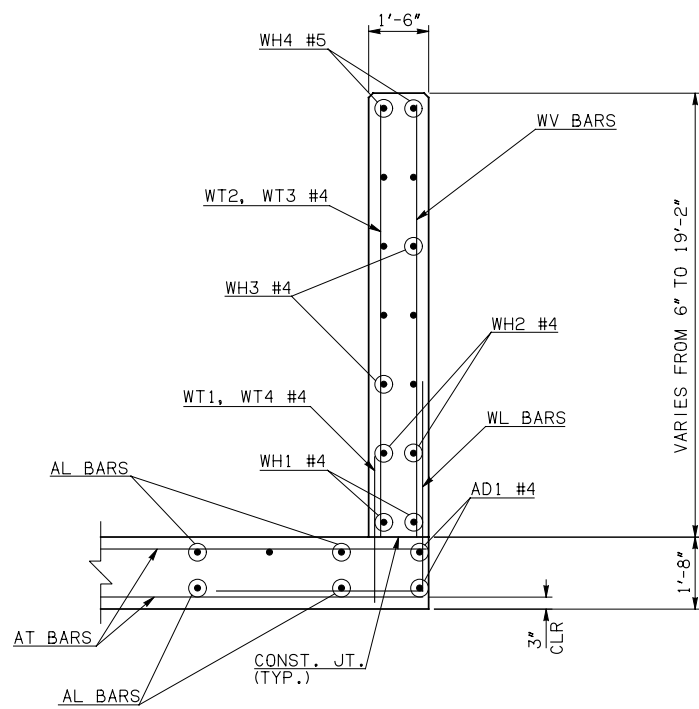
WING ELEVATION



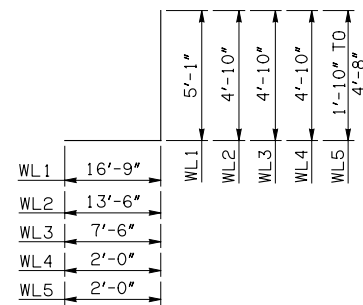
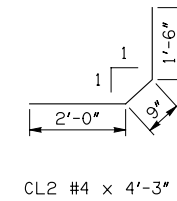
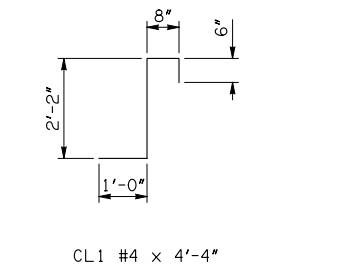
HEADWALL DETAIL AT EXTERIOR WALL



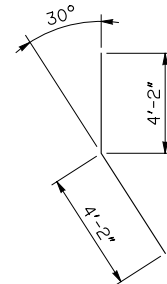
HEADWALL DETAIL AT INTERIOR WALL



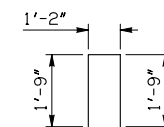
TYPICAL SECTION THRU WING



WL1 #10 x 21'-10"
 WL2 #8 x 18'-4"
 WL3 #5 x 12'-4"
 WL4 #5 x 6'-10"
 WL5 #5 x 5'-3" AVG.



WD1 #9 x 8'-4"



U1 #4 x 4'-8"

APPROVED BY BRIDGE ENGINEER *Robert J. Musch* DATE 4/09/09

OKLAHOMA DEPT. OF TRANSPORTATION
BRIDGE STANDARD (ENGLISH)
 RCB CULVERTS - END SECTION DETAILS
 DOUBLE CELL - 17'-0" HEIGHT - 0°
 SHEET NO. 2 OF 2