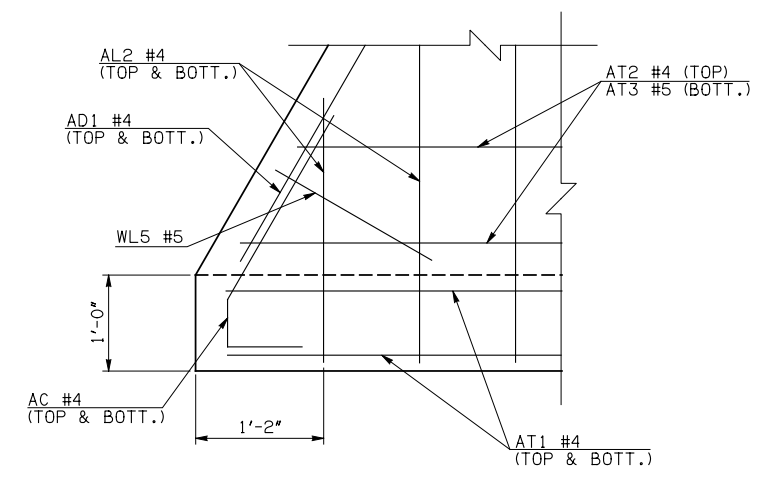
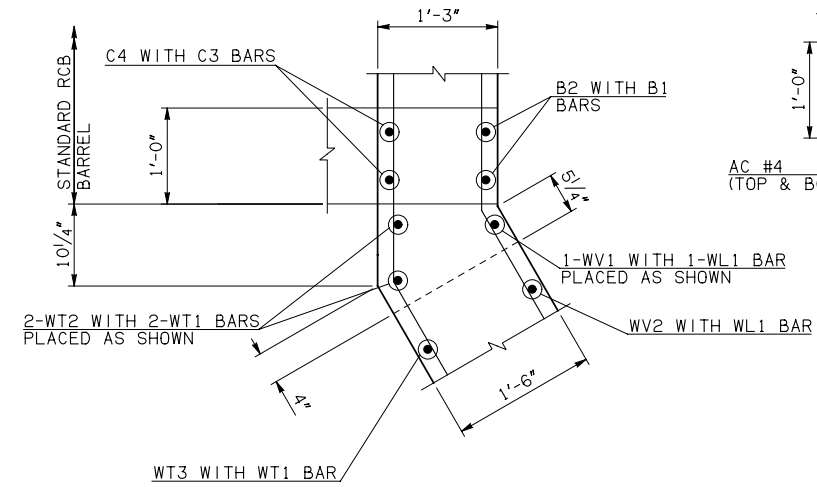
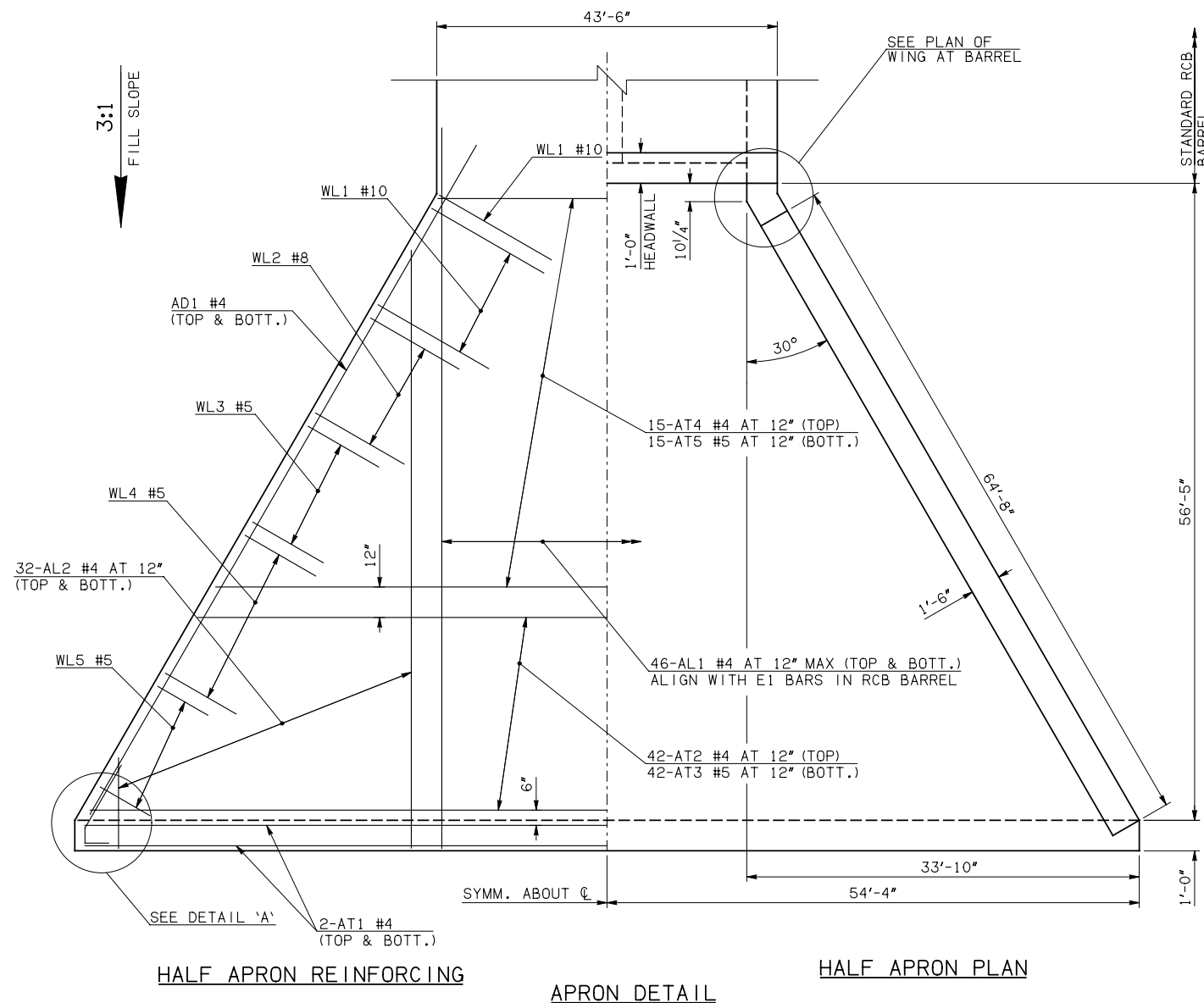


DESCRIPTION	REVISIONS	DATE



WINGWALL BAR LIST					
ONE WINGWALL SHOWN; TWO REQUIRED					
MARK	SIZE	QTY.	FORM	LENGTH	REMARKS
WD1	#9	36	BNT	8'-4"	
WH1	#4	2	STR	67'-4" ③	
WH2	#4	2	STR	64'-7" ③	
② WH3	#4	34	STR	30'-10 1/2" AVG.	3'-2" TO 58'-7"
WH4	#5	2	STR	69'-7" ③	
WL1	#10	18	BNT	21'-10"	
WL2	#8	33	BNT	18'-4"	
WL3	#5	27	BNT	12'-4"	
WL4	#5	15	BNT	6'-10"	
WL5	#5	11	BNT	5'-3" AVG.	3'-10" TO 6'-8"
WT1	#4	56	STR	3'-10"	
WT2	#4	2	STR	19'-0"	
WT3	#4	54	STR	11'-2 1/2" AVG.	3'-7" TO 18'-10"
WT4	#4	11	STR	3'-3" AVG.	1'-10" TO 4'-8"
WV1	#8	2	STR	19'-0"	
WV2	#8	17	STR	17'-8 1/2" AVG.	16'-7" TO 18'-10"
WV3	#6	33	STR	14'-1" AVG.	11'-9" TO 16'-5"
WV4	#5	29	STR	7'-7 1/2" AVG.	3'-7" TO 11'-8"
U1	#4	1	BNT	4'-8"	

APRON AND HEADWALL BAR LIST					
ONE APRON AND ONE HEADWALL SHOWN					
MARK	SIZE	FORM	QTY.	LENGTH	REMARKS
AC	#4	BNT	4	3'-8"	
③ AD1	#4	STR	4	69'-4"	
AL1	#4	STR	92	59'-3"	
① AL2	#4	STR	128	29'-4" AVG.	2'-6" TO 56'-2"
③ AT1	#4	STR	4	110'-10"	
③ AT2	#4	STR	42	86'-7 1/2" AVG.	62'-11" TO 110'-4"
③ AT3	#5	STR	42	86'-7 1/2" AVG.	62'-11" TO 110'-4"
AT4	#4	STR	15	51'-3" AVG.	43'-2" TO 59'-4"
AT5	#5	STR	15	51'-3" AVG.	43'-2" TO 59'-4"
CH	#4	STR	4	43'-2"	
CL1	#4	BNT	46	4'-4"	
CL2	#4	BNT	46	4'-3"	

QUANTITIES		
ITEM	UNIT	20' SPAN
CLASS AA CONCRETE	CY	344.60
REINFORCING STEEL	LB	31170.00

NOTE: QUANTITIES ABOVE ARE FOR ONE END SECTION, WHICH IS COMPRISED OF ONE HEADWALL, ONE APRON, AND TWO WINGWALLS.

- ① 4-SETS OF 32-AL2 BARS REQUIRED
- ② 2-SETS OF 17-WH3 BARS REQUIRED
- ③ INCLUDES 2'-6" LAP

APPROVED BY BRIDGE ENGINEER *Robert J. Muech* DATE 4/09/09

OKLAHOMA DEPT. OF TRANSPORTATION  
BRIDGE STANDARD (ENGLISH)  
RCB CULVERTS - END SECTION DETAILS  
DOUBLE CELL - 17'-0" HEIGHT - 0°  
SHEET NO. 1 OF 2

1999 SPECIFICATIONS RCB-E2-H17-0-1 OOE  
B-622E