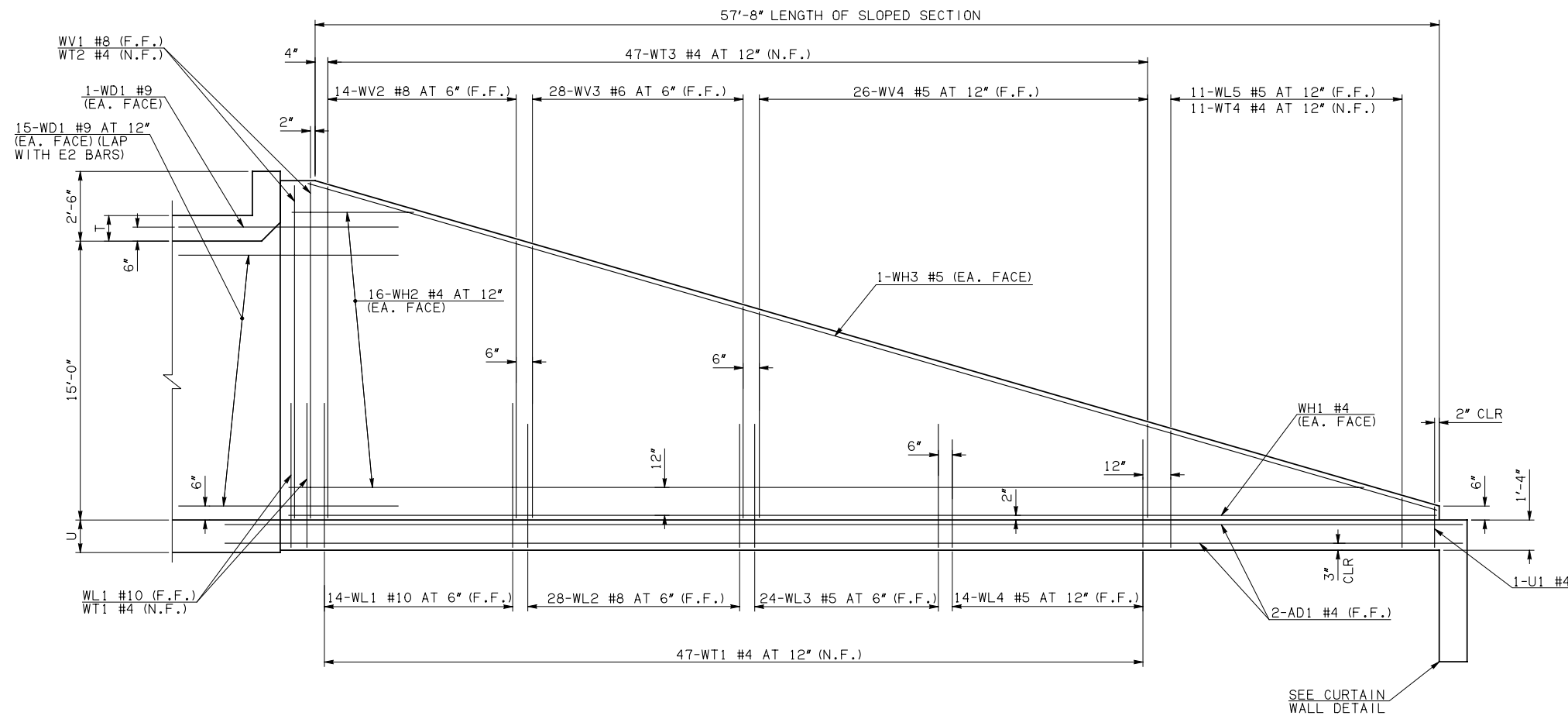
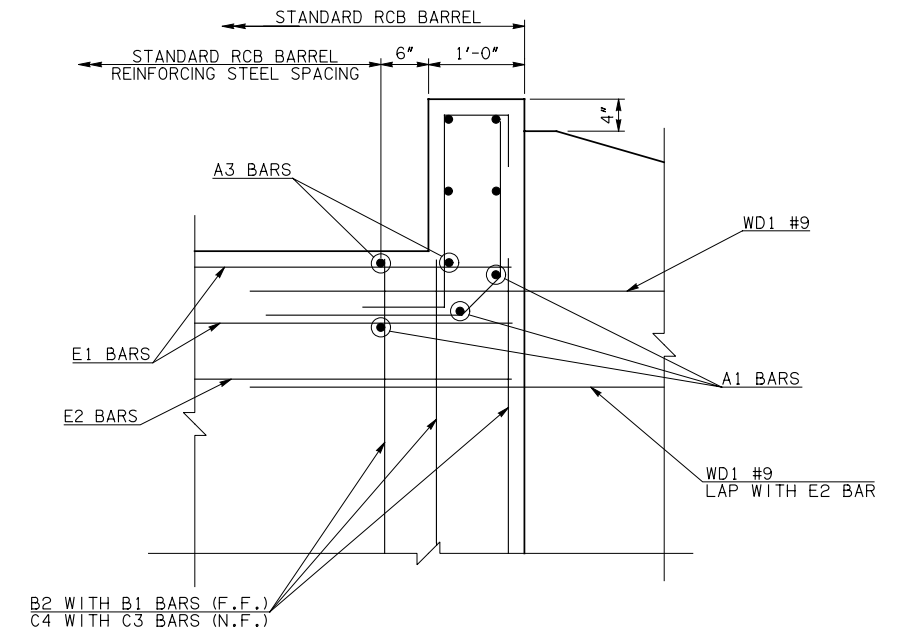


DESCRIPTION	REVISIONS	DATE

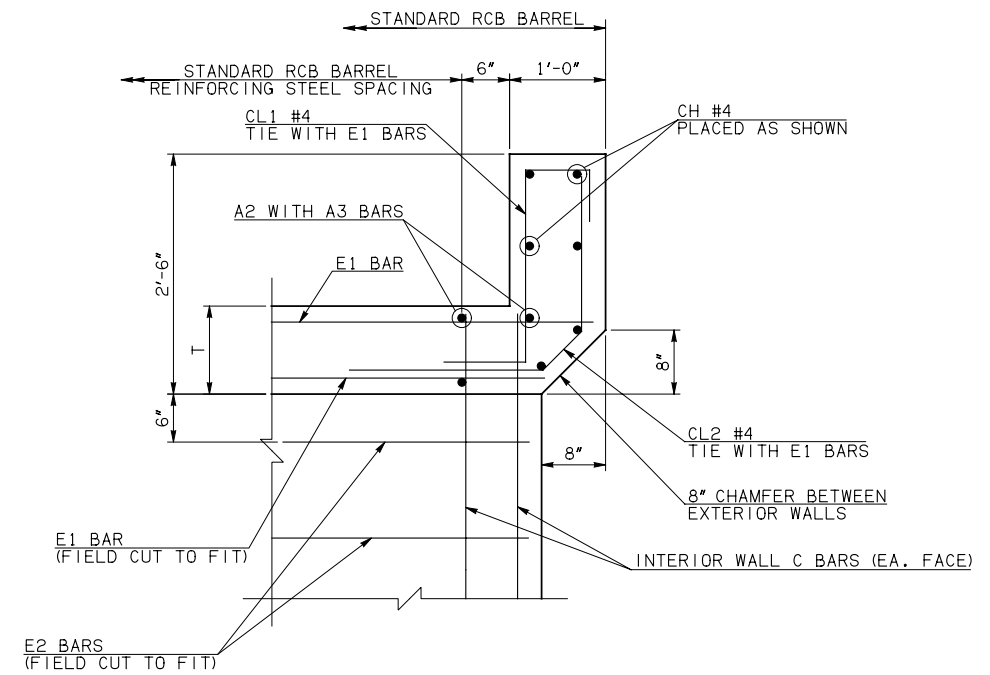


NOTE: F.F. = FAR FACE
N.F. = NEAR FACE

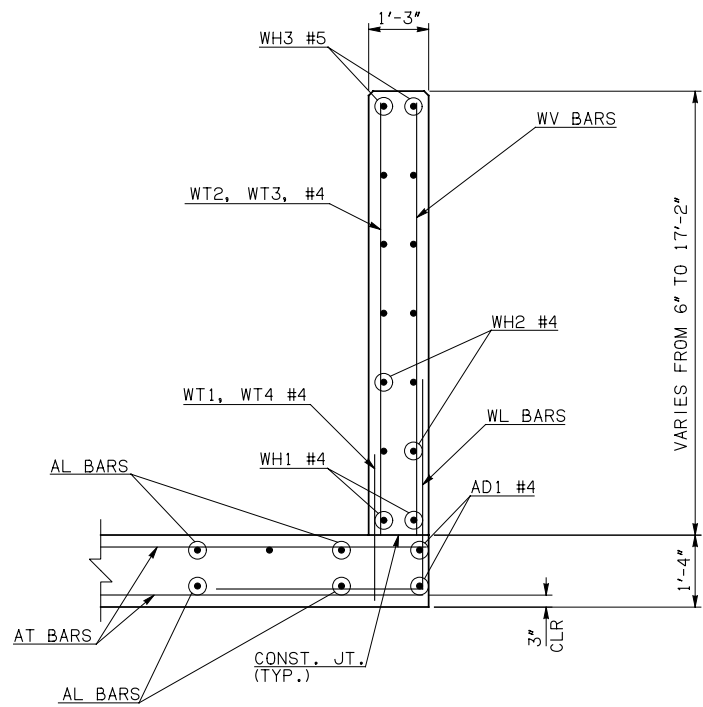
WING ELEVATION



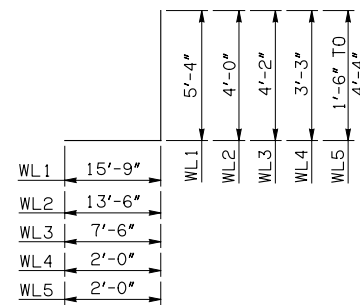
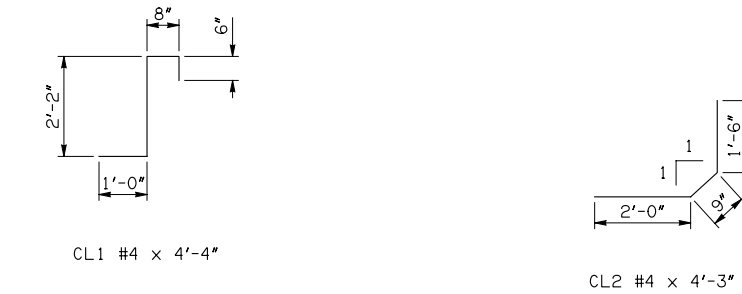
HEADWALL DETAIL AT EXTERIOR WALL



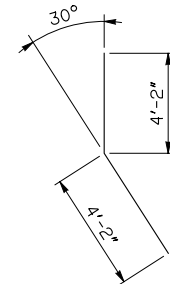
HEADWALL DETAIL AT INTERIOR WALL



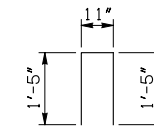
TYPICAL SECTION THRU WING



WL1 #10 x 21'-1"
WL2 #8 x 17'-6"
WL3 #5 x 11'-8"
WL4 #5 x 5'-3"
WL5 #5 x 4'-11\"/>



WD1 #9 x 8'-4"



U1 #4 x 3'-9"

APPROVED BY BRIDGE ENGINEER *Debra J. Nuss* DATE 4/09/09

OKLAHOMA DEPT. OF TRANSPORTATION
BRIDGE STANDARD (ENGLISH)
RCB CULVERTS - END SECTION DETAILS
DOUBLE CELL - 15'-0" HEIGHT - 0°
SHEET NO. 2 OF 2

1999 SPECIFICATIONS

RCB-E2-H15-0-2

OOE

B-621E