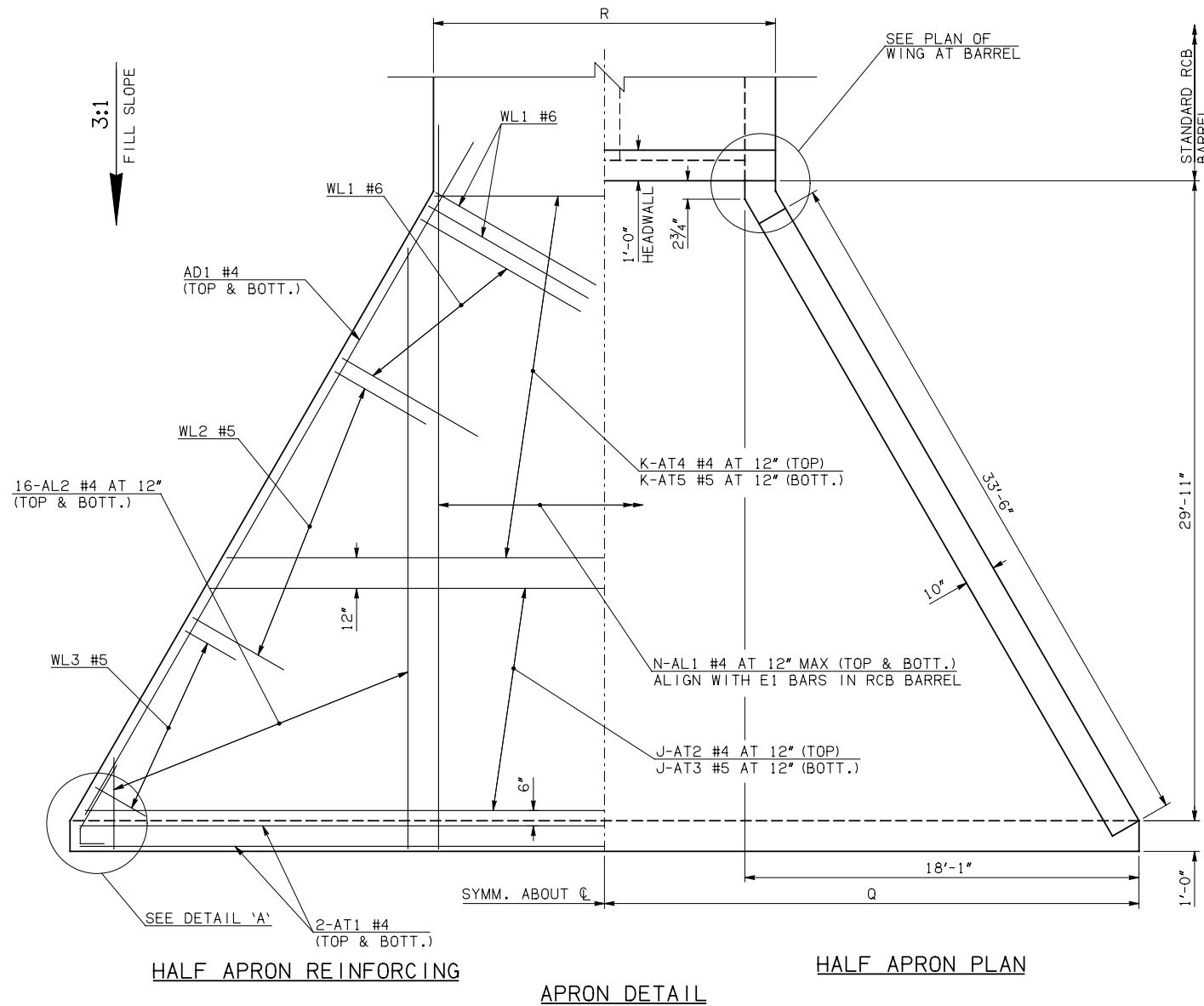
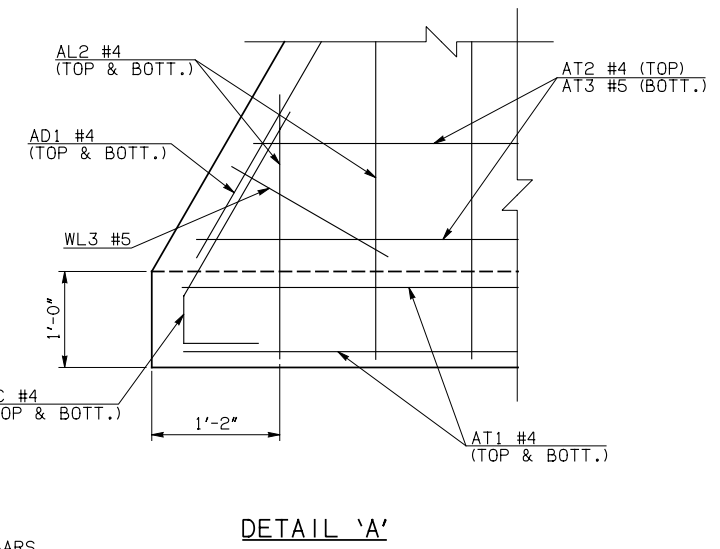
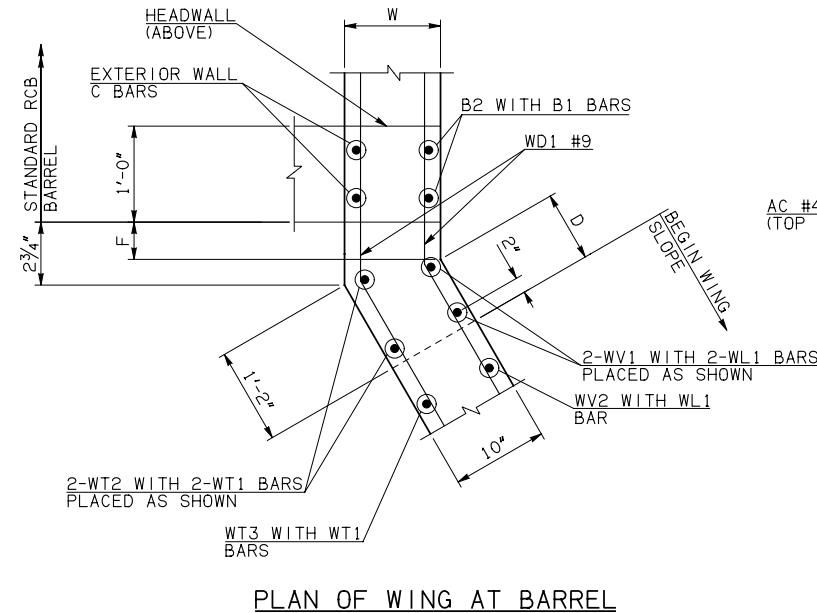


DESCRIPTION	REVISIONS	DATE



WINGWALL DIMENSIONS			
SPAN	W	D	F
8'	12"	7 1/4"	3 1/2"
10'	12"	7 1/4"	3 1/2"
12'	12"	7 1/4"	3 1/2"
14'	12"	7 1/4"	3 1/2"
16'	13"	5 1/4"	5 1/4"



APRON VARIABLES						
SPAN	DIM. R	DIM. Q	QTY. J	QTY. K	QTY. N	
8'	19'-0"	26'-7"	30	0	22	
10'	23'-0"	28'-7"	30	0	26	
12'	27'-0"	30'-7"	1	29	30	
14'	31'-0"	32'-7"	4	26	34	
16'	35'-2"	34'-7"	8	22	38	

WINGWALL BAR LIST					
ONE WINGWALL SHOWN; TWO REQUIRED					
MARK	SIZE	QTY.	FORM	LENGTH	REMARKS
WD1	#9	18	BNT	8'-4"	
WH1	#4	2	STR	34'-6"	
WH2	#4	18	STR	17'-10 1/2" AVG.	4'-0" TO 31'-9"
WH3	#5	2	STR	34'-8"	
WL1	#6	10	BNT	12'-9"	
WL2	#5	29	BNT	10'-0"	
WL3	#5	10	BNT	4'-8" AVG.	3'-4" TO 6'-0"
WT1	#4	25	STR	2'-10"	
WT2	#4	2	STR	10'-0"	
WT3	#4	23	STR	6'-8" AVG.	3'-6" TO 9'-10"
WT4	#4	10	STR	2'-8" AVG.	1'-4" TO 4'-0"
WV1	#5	2	STR	10'-0"	
WV2	#5	23	STR	6'-8" AVG.	3'-6" TO 9'-10"
U1	#4	1	BNT	2'-8"	

- ① 4-SETS OF 16-AL2 BARS REQUIRED
- ② 2-SETS OF 9-WH2 BARS REQUIRED
- ③ INCLUDES 2'-6" LAP

APRON AND HEADWALL BAR LIST

APRON AND HEADWALL BAR LIST																	
ONE APRON AND ONE HEADWALL SHOWN																	
MARK	SIZE	FORM	8' SPAN			10' SPAN			12' SPAN			14' SPAN			16' SPAN		
			QTY.	LENGTH	REMARKS	QTY.	LENGTH	REMARKS	QTY.	LENGTH	REMARKS	QTY.	LENGTH	REMARKS	QTY.	LENGTH	REMARKS
AC	#4	BNT	4	3'-8"		4	3'-8"		4	3'-8"		4	3'-8"		4	3'-8"	
AD1	#4	STR	4	36'-6"		4	36'-6"		4	36'-6"		4	36'-6"		4	36'-6"	
AL1	#4	STR	44	32'-8"		52	32'-8"		60	32'-8"		68	32'-8"		76	32'-8"	
① AL2	#4	STR	64	15'-5 1/2" AVG.	2'-6" TO 28'-5"	64	15'-5 1/2" AVG.	2'-6" TO 28'-5"	64	15'-5 1/2" AVG.	2'-6" TO 28'-5"	64	15'-5 1/2" AVG.	2'-6" TO 28'-5"	64	15'-5 1/2" AVG.	2'-6" TO 28'-5"
AT1	#4	STR	4	52'-10"		4	56'-10"		4	63'-4"	③	4	67'-4"	③	4	71'-4"	③
AT2	#4	STR	30	35'-7" AVG.	18'-10" TO 52'-4"	30	39'-7" AVG.	22'-10" TO 56'-4"	1	62'-10"	③	4	65'-1" AVG.	63'-4" TO 66'-10"③	8	66'-9 1/2" AVG.	62'-9" TO 70'-10"③
AT3	#5	STR	30	35'-7" AVG.	18'-10" TO 52'-4"	30	39'-7" AVG.	22'-10" TO 56'-4"	1	62'-10"	③	4	65'-1" AVG.	63'-4" TO 66'-10"③	8	66'-9 1/2" AVG.	62'-9" TO 70'-10"③
AT4	#4	STR	0			0			29	43'-0" AVG.	26'-10" TO 59'-2"	26	45'-3" AVG.	30'-10" TO 59'-8"	22	46'-11 1/2" AVG.	34'-10" TO 59'-1"
AT5	#5	STR	0			0			29	43'-0" AVG.	26'-10" TO 59'-2"	26	45'-3" AVG.	30'-10" TO 59'-8"	22	46'-11 1/2" AVG.	34'-10" TO 59'-1"
CH	#4	STR	4	18'-8"		4	22'-8"		4	26'-8"		4	30'-8"		4	34'-10"	
CL1	#4	BNT	22	4'-4"		26	4'-4"		30	4'-4"		34	4'-4"		38	4'-4"	
CL2	#4	BNT	22	4'-3"		26	4'-3"		30	4'-3"		34	4'-3"		38	4'-3"	

QUANTITIES						
ITEM	UNIT	8' SPAN	10' SPAN	12' SPAN	14' SPAN	16' SPAN
CLASS AA CONCRETE	CY	54.20	58.90	63.60	68.30	72.90
REINFORCING STEEL	LB	7400.00	7820.00	8260.00	8690.00	9140.00

NOTE: QUANTITIES ABOVE ARE FOR ONE END SECTION, WHICH IS COMPRISED OF ONE HEADWALL, ONE APRON, AND TWO WINGWALLS. INCLUDED IN REINFORCING STEEL PAY ITEM QUANTITY IS THE WEIGHT OF ADDITIONAL RCB BARREL REINFORCING STEEL REQUIRED AS SHOWN.

APPROVED BY BRIDGE ENGINEER *Robert J. Nisch* DATE 4/09/09

OKLAHOMA DEPT. OF TRANSPORTATION  
BRIDGE STANDARD (ENGLISH)  
RCB CULVERTS - END SECTION DETAILS  
DOUBLE CELL - 8'-0" HEIGHT - 0°  
SHEET NO. 1 OF 2

1999 SPECIFICATIONS RCB-E2-H8-0-1 OOE B-610E