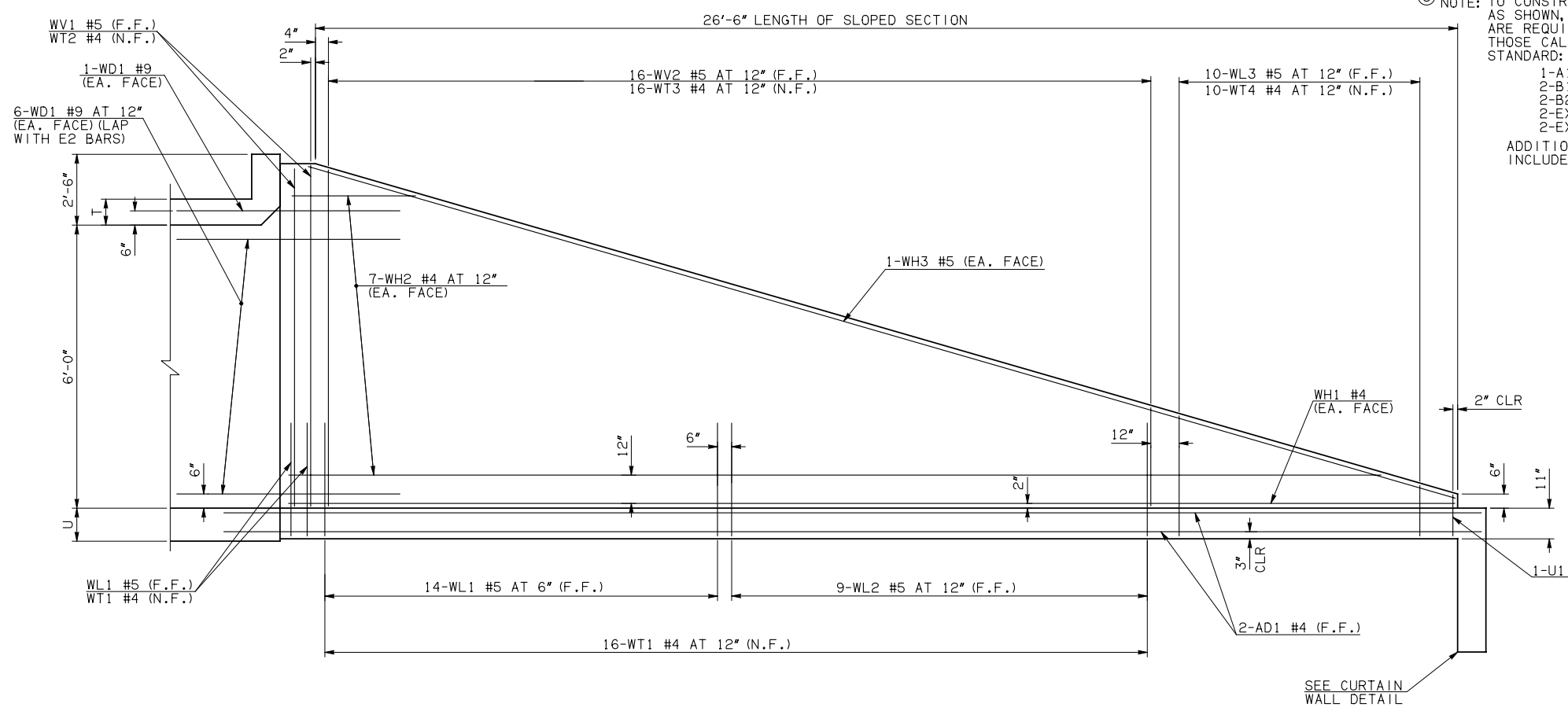


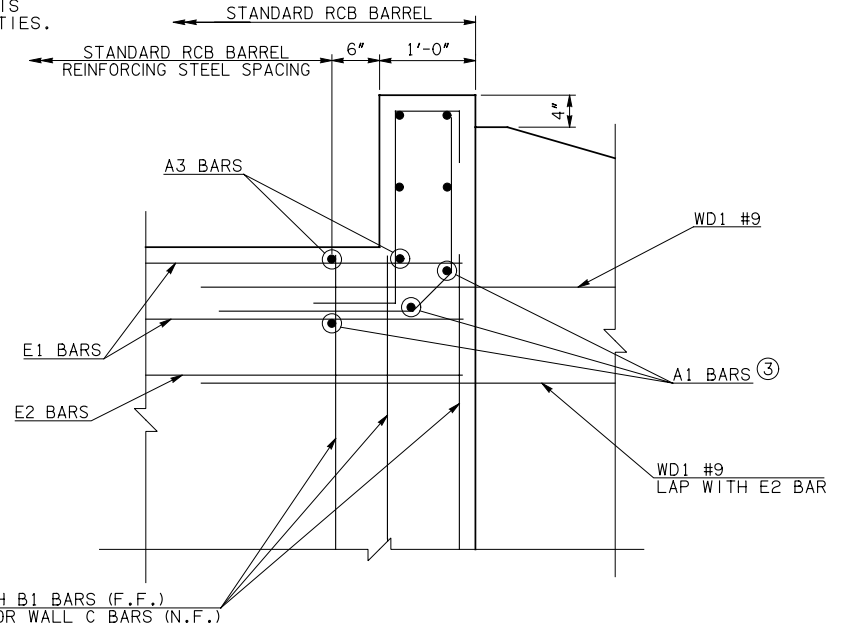
DESCRIPTION	REVISIONS	DATE

③ NOTE: TO CONSTRUCT ONE END SECTION AS SHOWN, THE FOLLOWING BARS ARE REQUIRED IN ADDITION TO THOSE CALLED IN THE RCB BARREL STANDARD:
 1-A1 BAR
 2-B1 BARS
 2-B2 BARS
 2-EXTERIOR WALL C BARS
 2-EXTERIOR WALL C DOWEL BARS
 ADDITIONAL WEIGHT IS INCLUDED IN QUANTITIES.

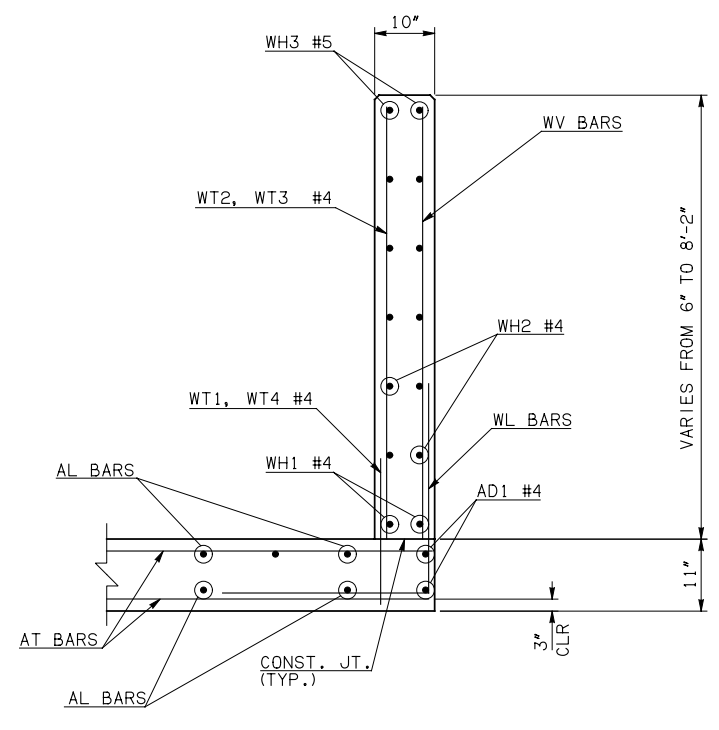


NOTE: F.F. = FAR FACE
 N.F. = NEAR FACE

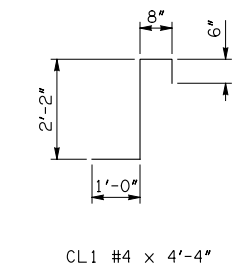
WING ELEVATION



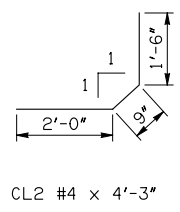
HEADWALL DETAIL AT EXTERIOR WALL



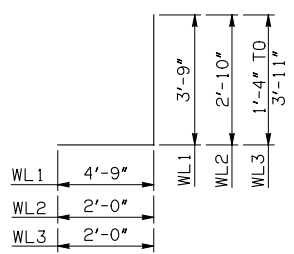
TYPICAL SECTION THRU WING



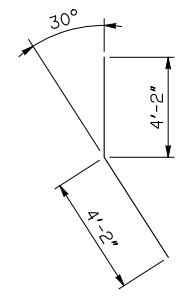
CL1 #4 x 4'-4"



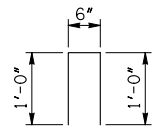
CL2 #4 x 4'-3"



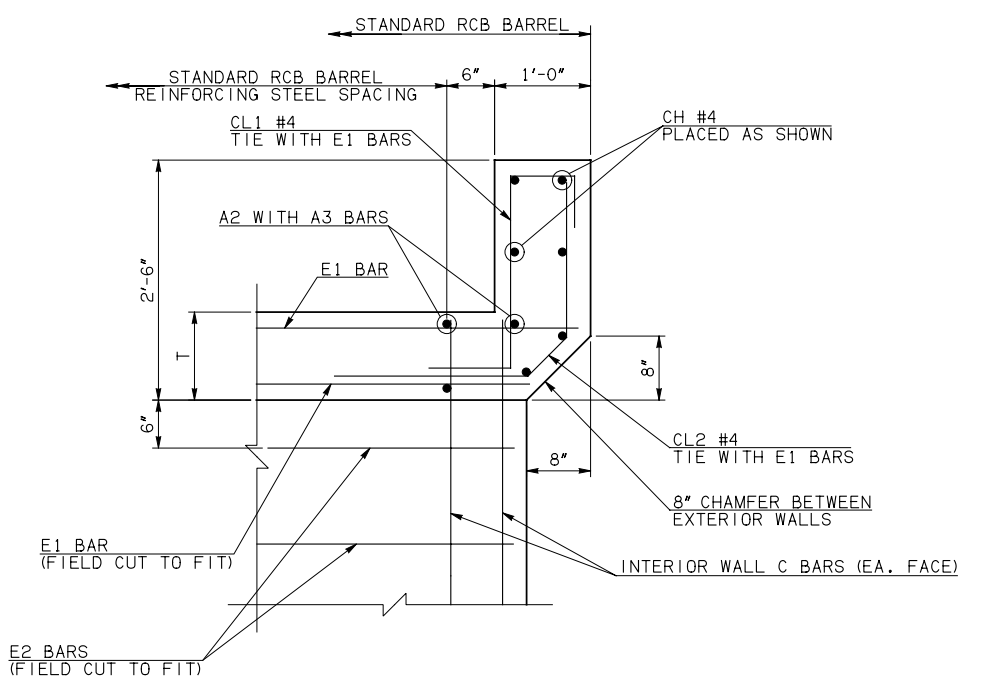
WL1 #5 x 8'-6"
 WL2 #5 x 4'-10"
 WL3 #5 x 4'-7 1/2" AVG.



WD1 #9 x 8'-4"



U1 #4 x 2'-6"



HEADWALL DETAIL AT INTERIOR WALL

APPROVED BY BRIDGE ENGINEER *Robert J. Nisch* DATE 4/09/09

OKLAHOMA DEPT. OF TRANSPORTATION
 BRIDGE STANDARD (ENGLISH)
 RCB CULVERTS - END SECTION DETAILS
 DOUBLE CELL - 6'-0" HEIGHT - 0°
 SHEET NO. 2 OF 2

1999 SPECIFICATIONS	RCB-E2-H6-0-2	OOE
		B-607E