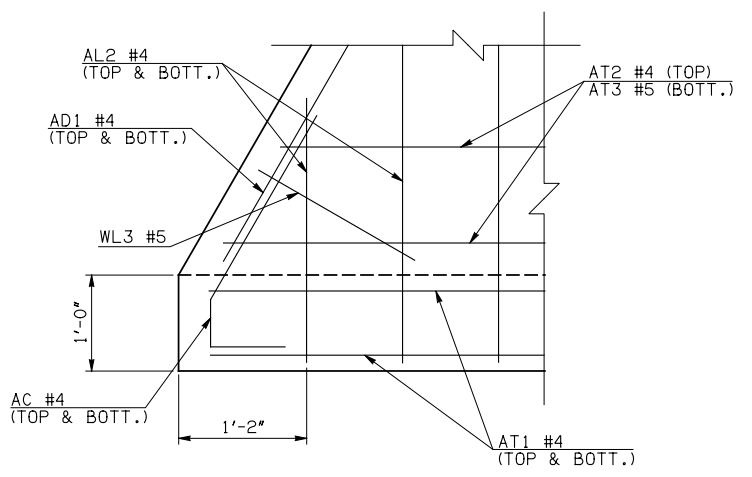
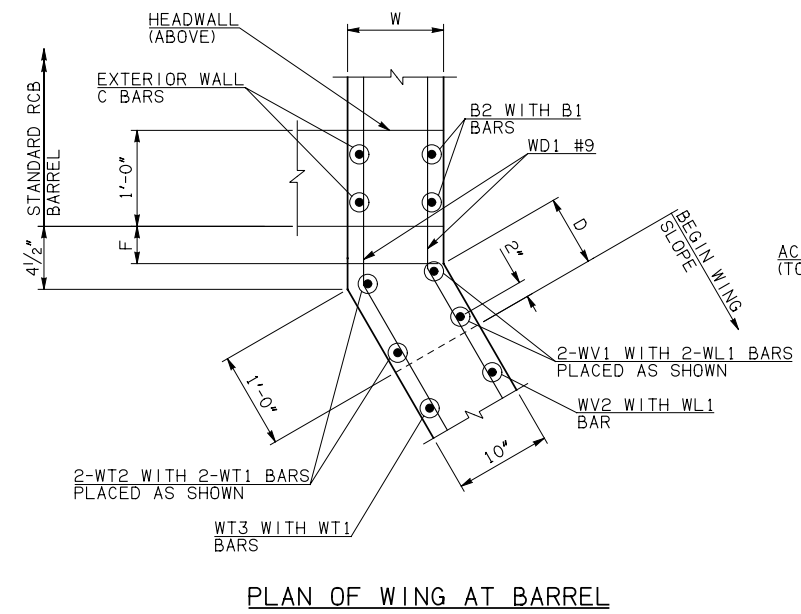
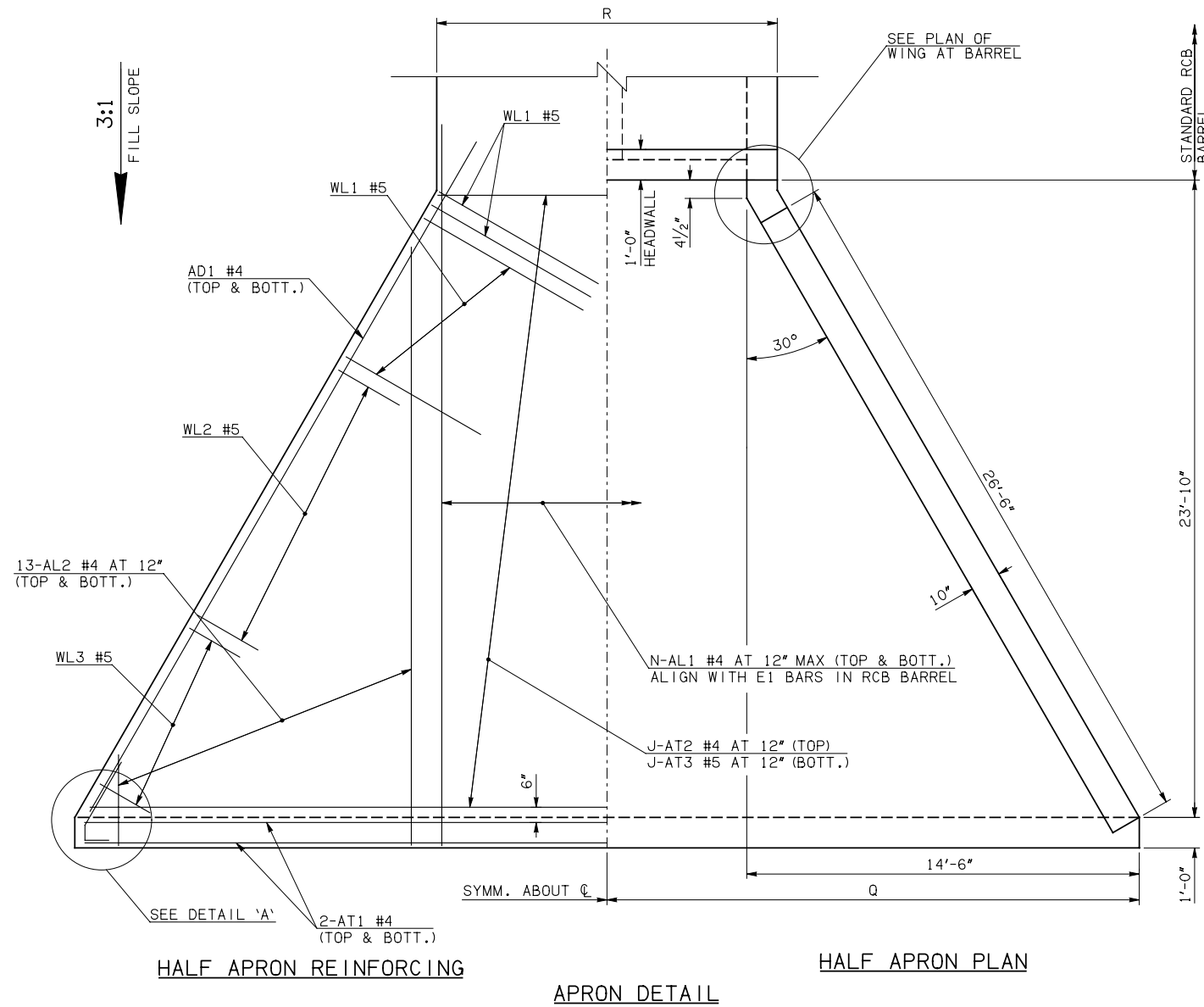


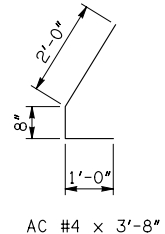
DESCRIPTION	REVISIONS	DATE

WINGWALL DIMENSIONS			
SPAN	W	D	F
6'	12"	5/4"	5/4"
8'	12"	5/4"	5/4"
10'	12"	5/4"	5/4"
12'	12"	5/4"	5/4"



WINGWALL BAR LIST					
ONE WINGWALL SHOWN; TWO REQUIRED					
MARK	SIZE	QTY.	FORM	LENGTH	REMARKS
WD1	#9	14	BNT	8'-4"	
WH1	#4	2	STR	27'-4"	
WH2	#4	14	STR	14'-2 1/2" AVG.	3'-10" TO 24'-7"
WH3	#5	2	STR	27'-4"	
WL1	#5	16	BNT	8'-6"	
WL2	#5	9	BNT	4'-10"	
WL3	#5	10	BNT	4'-7 1/2" AVG.	3'-4" TO 5'-11"
WT1	#4	18	STR	2'-10"	
WT2	#4	2	STR	8'-0"	
WT3	#4	16	STR	5'-8" AVG.	3'-6" TO 7'-10"
WT4	#4	10	STR	2'-7 1/2" AVG.	1'-4" TO 3'-11"
WV1	#5	2	STR	8'-0"	
WV2	#5	16	STR	5'-8" AVG.	3'-6" TO 7'-10"
U1	#4	1	BNT	2'-6"	

APRON VARIABLES					
SPAN	DIM. R	DIM. Q	QTY. J	QTY. N	
6'	15'-0"	21'-0"	24	18	
8'	19'-0"	23'-0"	24	22	
10'	23'-0"	25'-0"	24	26	
12'	27'-0"	27'-0"	24	30	



- ① 4-SETS OF 13-AL2 BARS REQUIRED
- ② 2-SETS OF 7-WH2 BARS REQUIRED

APRON AND HEADWALL BAR LIST														
ONE APRON AND ONE HEADWALL SHOWN														
MARK	SIZE	FORM	6' SPAN			8' SPAN			10' SPAN			12' SPAN		
			QTY.	LENGTH	REMARKS	QTY.	LENGTH	REMARKS	QTY.	LENGTH	REMARKS	QTY.	LENGTH	REMARKS
AC	#4	BNT	4	3'-8"		4	3'-8"		4	3'-8"		4	3'-8"	
AD1	#4	STR	4	29'-4"		4	29'-4"		4	29'-4"		4	29'-4"	
AL1	#4	STR	36	26'-7"		44	26'-7"		52	26'-7"		60	26'-7"	
AL2	#4	STR	52	12'-10 1/2" AVG.	2'-6" TO 23'-3"	52	12'-10 1/2" AVG.	2'-6" TO 23'-3"	52	12'-10 1/2" AVG.	2'-6" TO 23'-3"	52	12'-10 1/2" AVG.	2'-6" TO 23'-3"
AT1	#4	STR	4	45'-8"		4	45'-8"		4	45'-8"		4	45'-8"	
AT2	#4	STR	24	27'-10 1/2" AVG.	14'-7" TO 41'-2"	24	31'-10 1/2" AVG.	18'-7" TO 45'-2"	24	35'-10 1/2" AVG.	22'-7" TO 49'-2"	24	39'-10 1/2" AVG.	26'-7" TO 53'-2"
AT3	#5	STR	24	27'-10 1/2" AVG.	14'-7" TO 41'-2"	24	31'-10 1/2" AVG.	18'-7" TO 45'-2"	24	35'-10 1/2" AVG.	22'-7" TO 49'-2"	24	39'-10 1/2" AVG.	26'-7" TO 53'-2"
CH	#4	STR	4	14'-8"		4	18'-8"		4	22'-8"		4	26'-8"	
CL1	#4	BNT	18	4'-4"		22	4'-4"		26	4'-4"		30	4'-4"	
CL2	#4	BNT	18	4'-3"		22	4'-3"		26	4'-3"		30	4'-3"	

QUANTITIES					
ITEM	UNIT	6' SPAN	8' SPAN	10' SPAN	12' SPAN
CLASS AA CONCRETE	CY	32.50	36.10	39.60	43.10
REINFORCING STEEL	LB	4830.00	5180.00	5550.00	5910.00

NOTE: QUANTITIES ABOVE ARE FOR ONE END SECTION, WHICH IS COMPRISED OF ONE HEADWALL, ONE APRON, AND TWO WINGWALLS. INCLUDED IN REINFORCING STEEL PAY ITEM QUANTITY IS THE WEIGHT OF ADDITIONAL RCB BARREL REINFORCING STEEL REQUIRED AS SHOWN.

APPROVED BY BRIDGE ENGINEER *Debra J. Nusch* DATE 4/09/09

OKLAHOMA DEPT. OF TRANSPORTATION
BRIDGE STANDARD (ENGLISH)
RCB CULVERTS - END SECTION DETAILS
DOUBLE CELL - 6'-0" HEIGHT - 0°
SHEET NO. 1 OF 2

1999 SPECIFICATIONS RCB-E2-H6-0-1 OOE B-606E