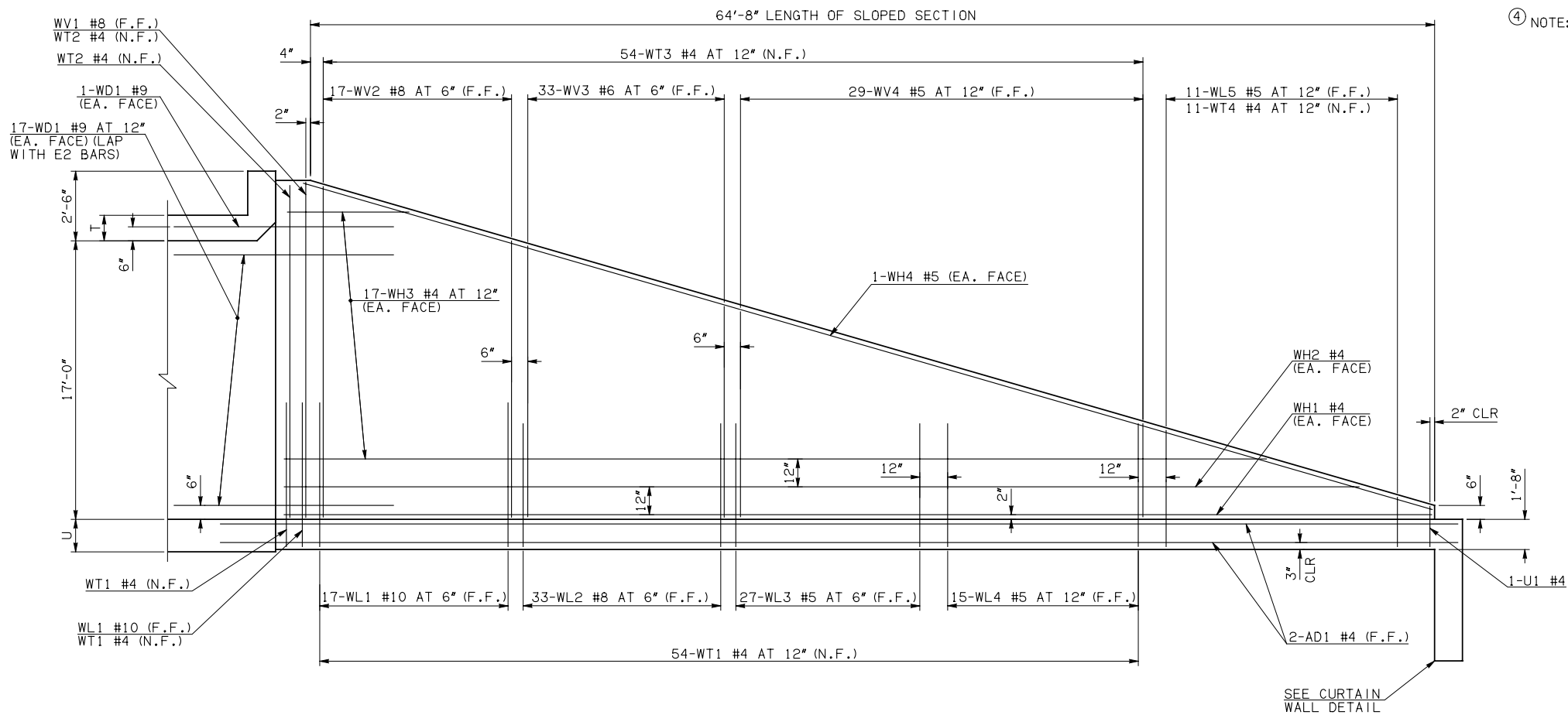


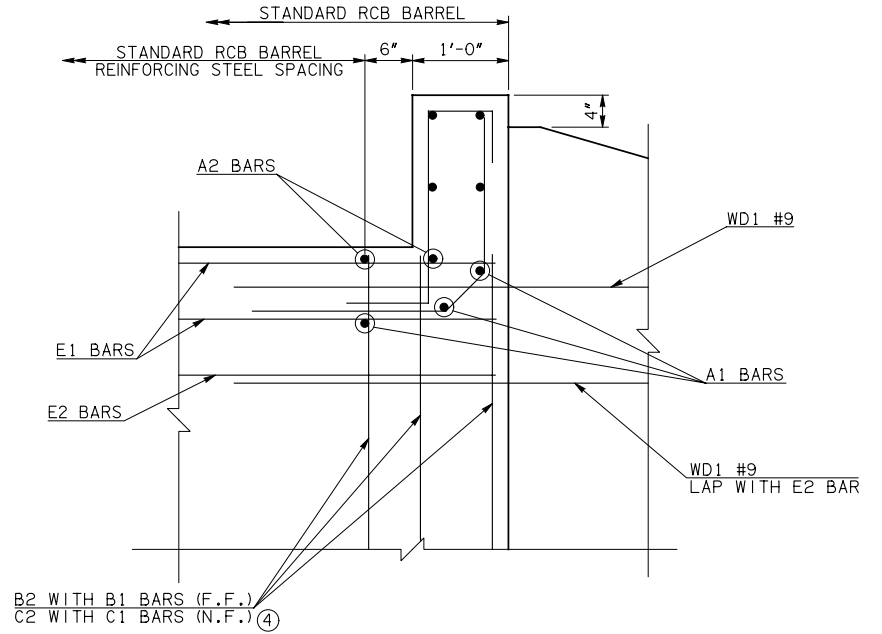
DESCRIPTION	REVISIONS	DATE

④ NOTE: TO CONSTRUCT ONE END SECTION AS SHOWN, THE FOLLOWING BARS ARE REQUIRED IN ADDITION TO THOSE CALLED IN THE RCB BARREL STANDARD:  
 2-C1 BARS  
 2-C2 BARS  
 ADDITIONAL WEIGHT IS INCLUDED IN QUANTITIES.

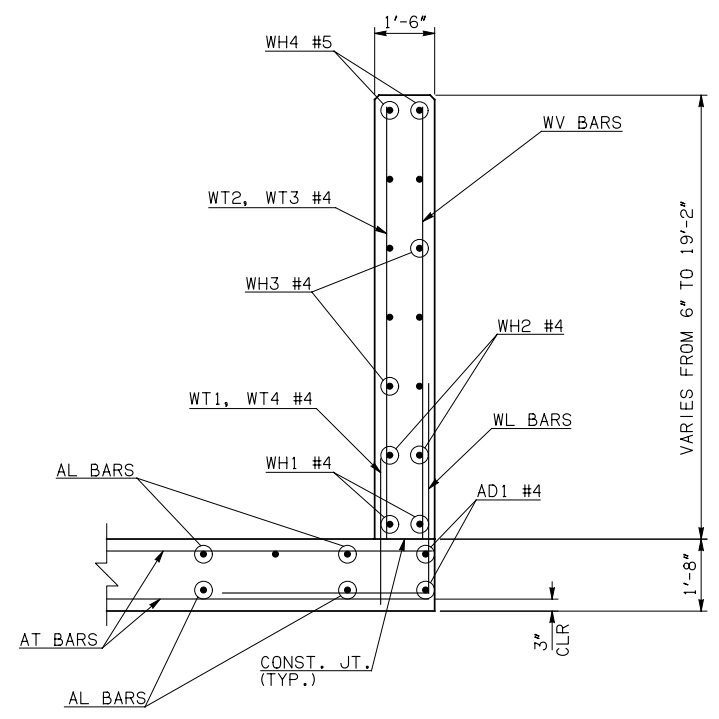


NOTE: F.F. = FAR FACE  
 N.F. = NEAR FACE

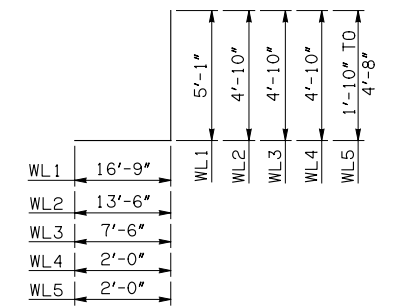
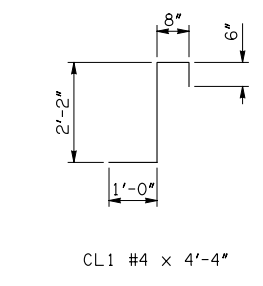
**WING ELEVATION**



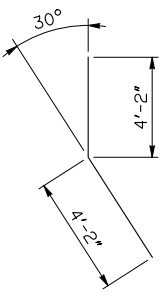
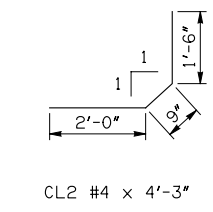
**HEADWALL DETAIL AT EXTERIOR WALL**



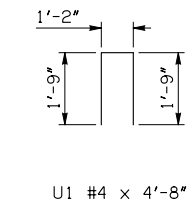
**TYPICAL SECTION THRU WING**



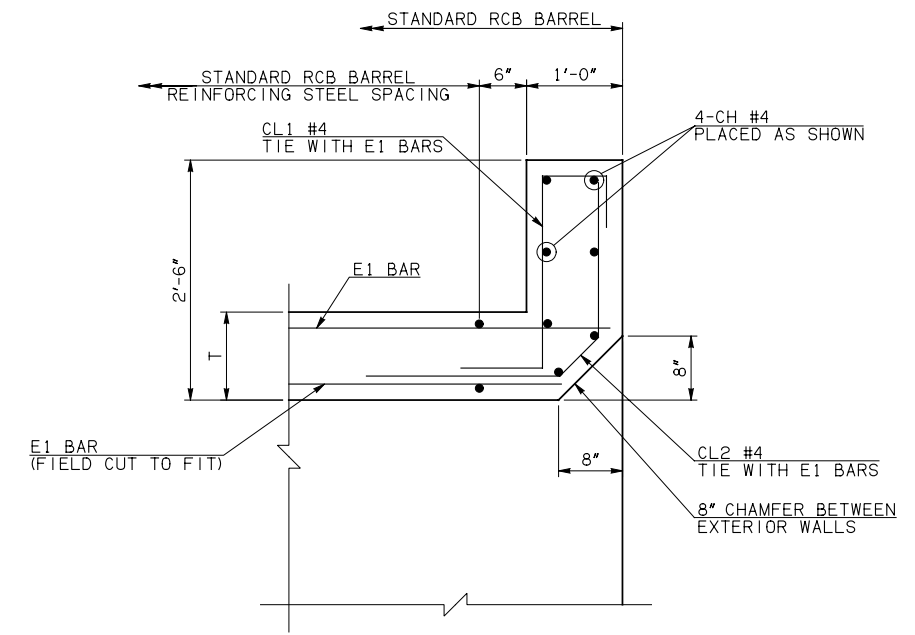
WL1 #10 x 21'-10"  
 WL2 #8 x 18'-4"  
 WL3 #5 x 12'-4"  
 WL4 #5 x 6'-10"  
 WL5 #5 x 5'-3" AVG.



WD1 #9 x 8'-4"



U1 #4 x 4'-8"



**HEADWALL DETAIL AT MIDSPAN**

APPROVED BY BRIDGE ENGINEER *Debra J. Nusch* DATE 4/09/09

**OKLAHOMA DEPT. OF TRANSPORTATION**  
**BRIDGE STANDARD (ENGLISH)**  
**RCB CULVERTS - END SECTION DETAILS**  
**SINGLE CELL - 17'-0" HEIGHT - 0°**  
 SHEET NO. 2 OF 2

1999 SPECIFICATIONS	RCB-E1-H17-0-2	OOE
---------------------	----------------	-----