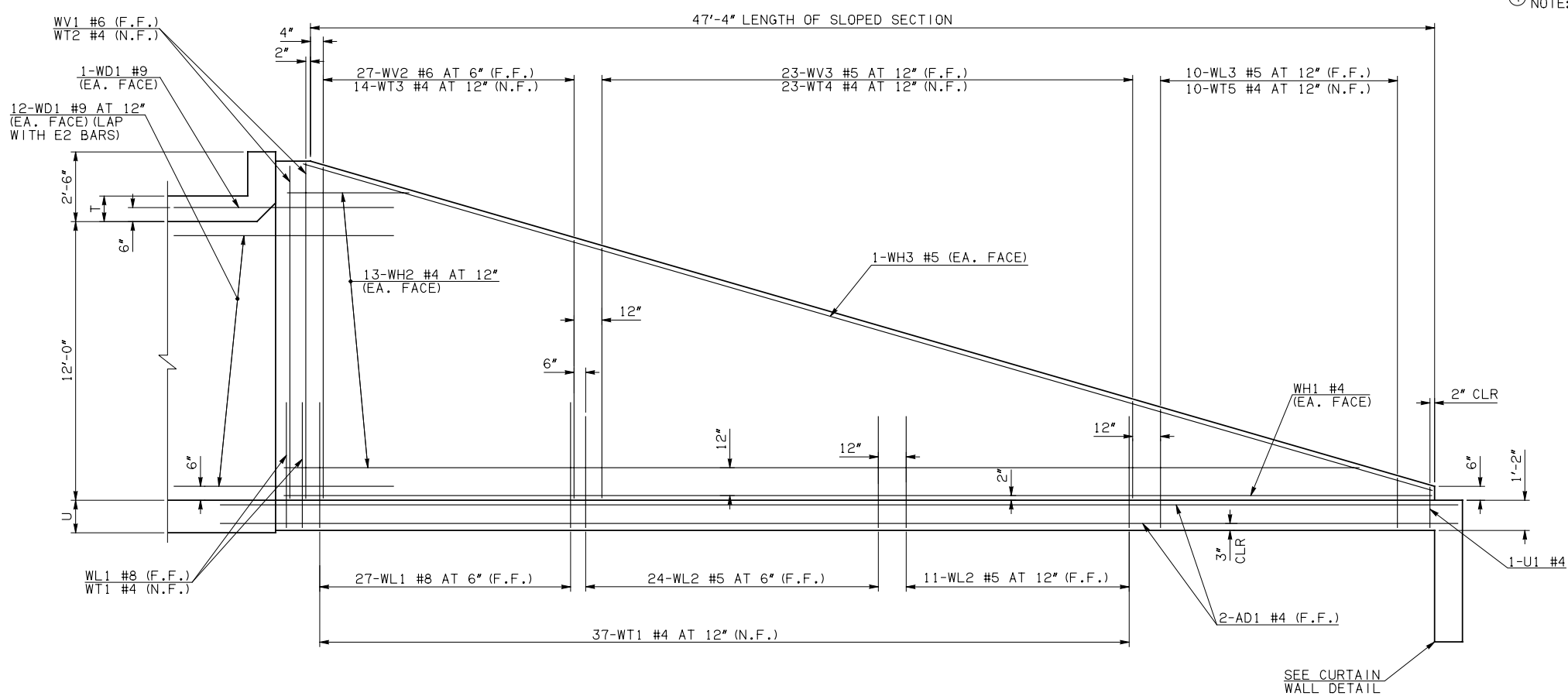


DESCRIPTION	REVISIONS	DATE

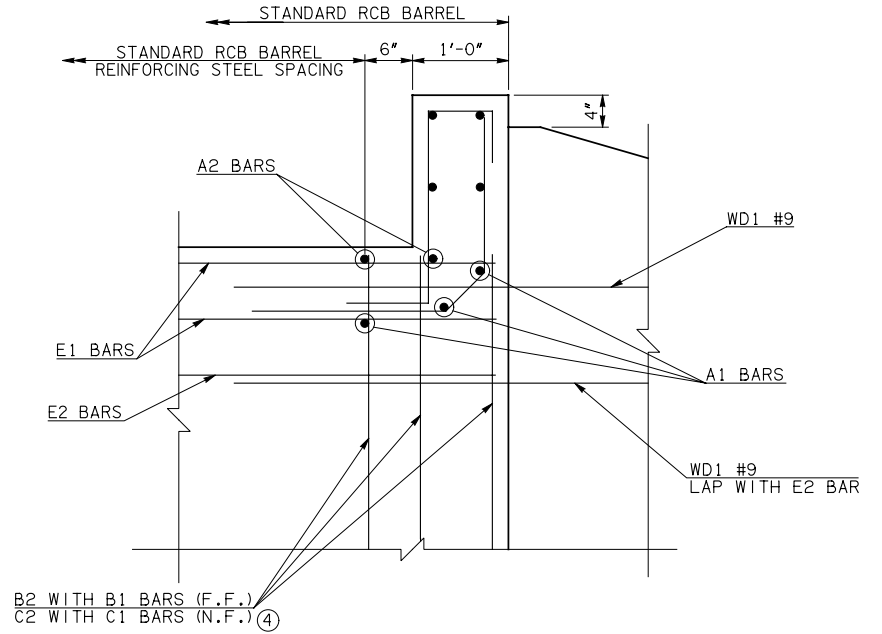
④ NOTE: TO CONSTRUCT ONE END SECTION AS SHOWN, THE FOLLOWING BARS ARE REQUIRED IN ADDITION TO THOSE CALLED IN THE RCB BARREL STANDARD:

2-C1 BARS  
2-C2 BARS  
ADDITIONAL WEIGHT IS INCLUDED IN QUANTITIES.

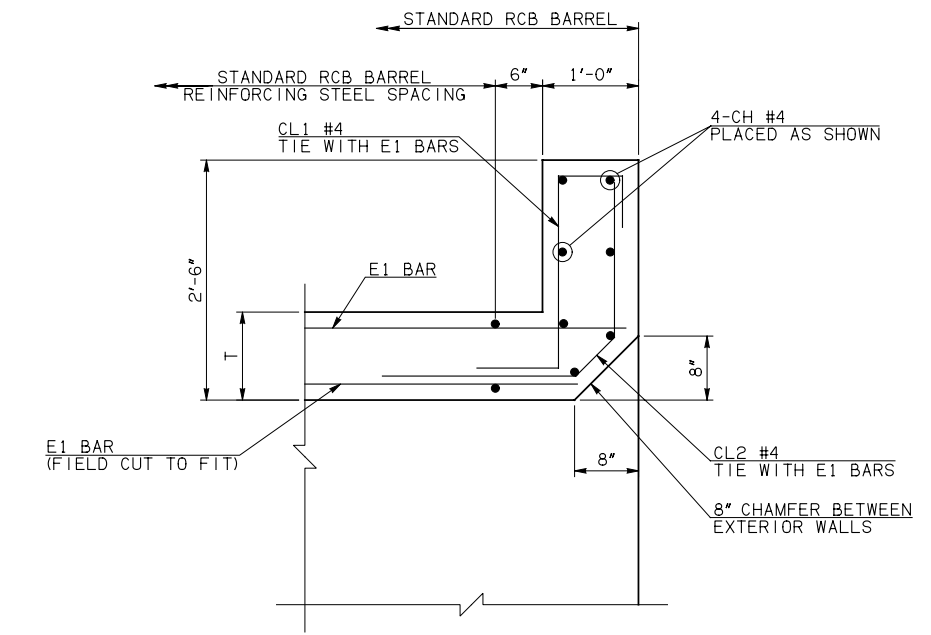


NOTE: F.F. = FAR FACE  
N.F. = NEAR FACE

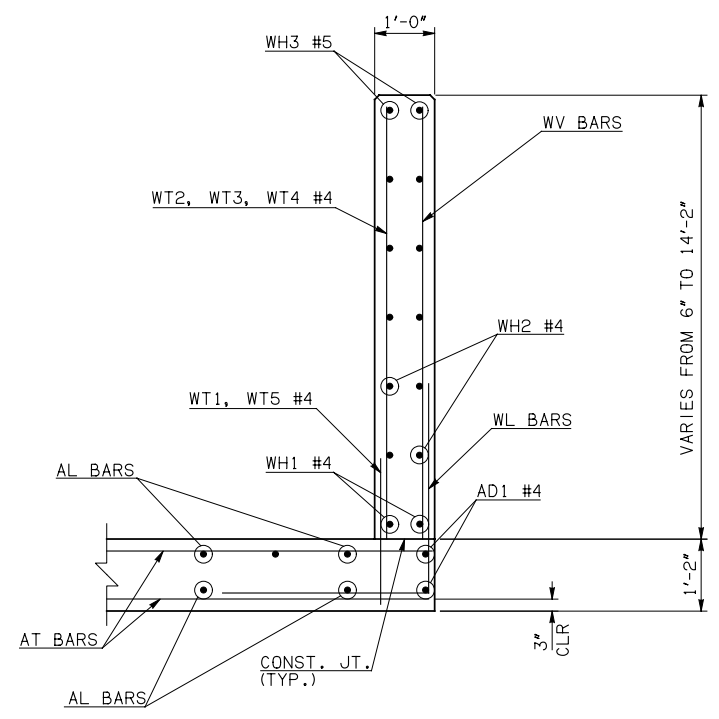
**WING ELEVATION**



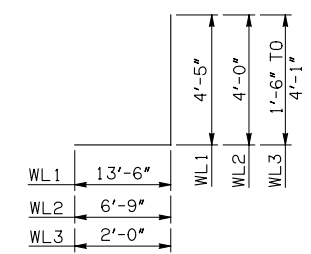
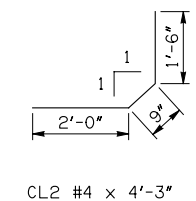
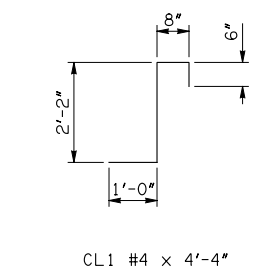
**HEADWALL DETAIL AT EXTERIOR WALL**



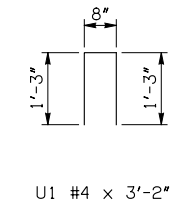
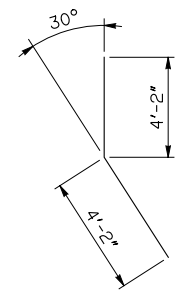
**HEADWALL DETAIL AT MIDSPAN**



**TYPICAL SECTION THRU WING**



WL1 #8 x 17'-11"  
WL2 #5 x 10'-9"  
WL3 #5 x 4'-9/2" AVG.



APPROVED BY BRIDGE ENGINEER *Debra J. Nusch* DATE 4/09/09

**OKLAHOMA DEPT. OF TRANSPORTATION  
BRIDGE STANDARD (ENGLISH)  
RCB CULVERTS - END SECTION DETAILS  
SINGLE CELL - 12'-0" HEIGHT - 0°**

SHEET NO. 2 OF 2

1999 SPECIFICATIONS	RCB-E1-H12-0-2	OOE
---------------------	----------------	-----

B-591E