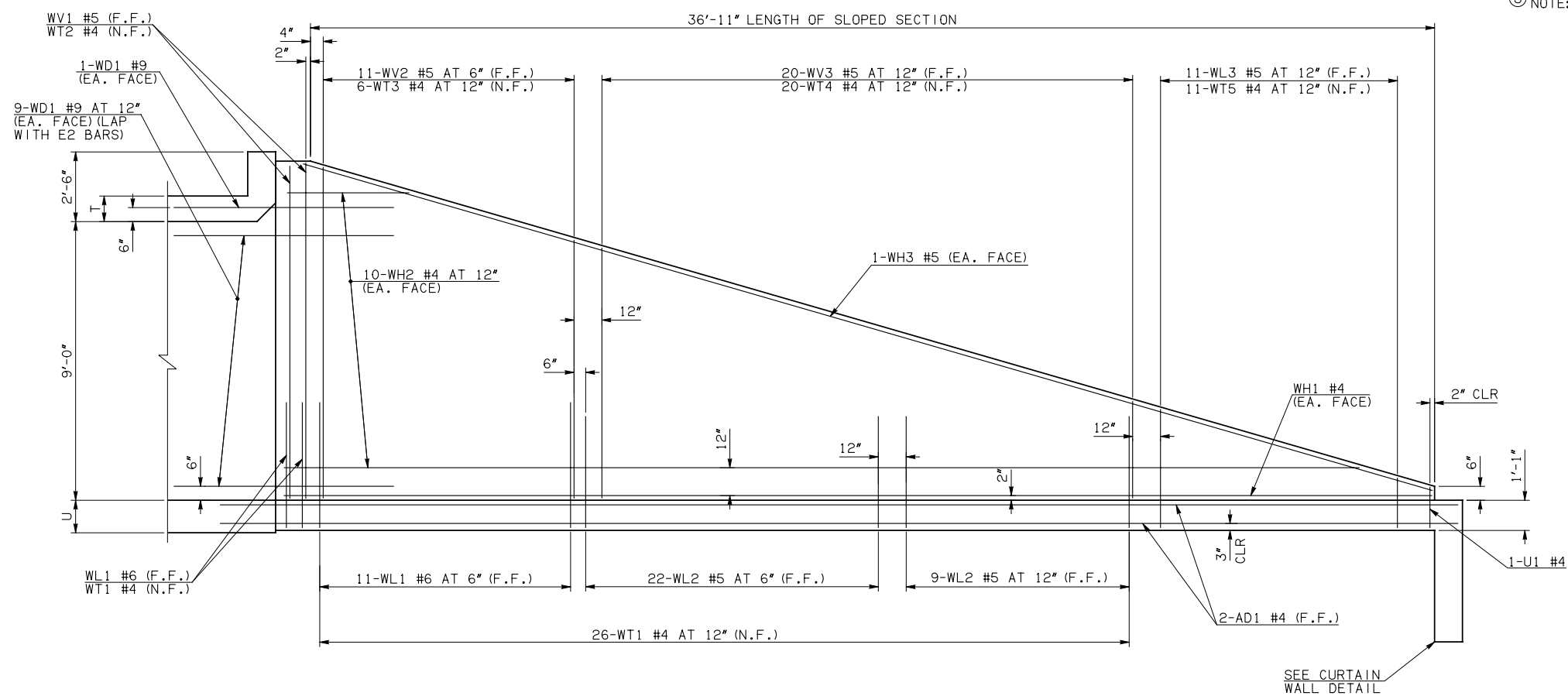


DESCRIPTION	REVISIONS	DATE

③ NOTE: TO CONSTRUCT ONE END SECTION AS SHOWN, THE FOLLOWING BARS ARE REQUIRED IN ADDITION TO THOSE CALLED IN THE RCB BARREL STANDARD:

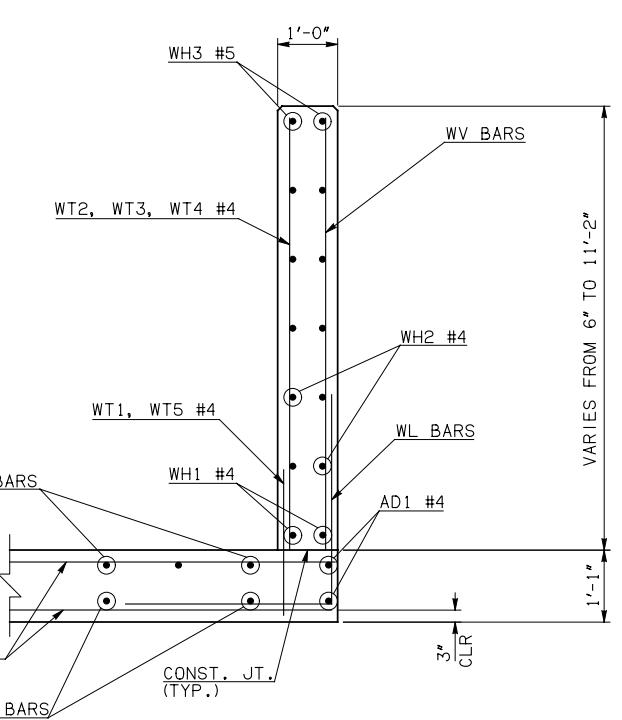
2-C1 BARS
2-C2 BARS

ADDITIONAL WEIGHT IS INCLUDED IN QUANTITIES.

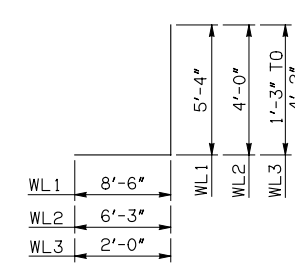
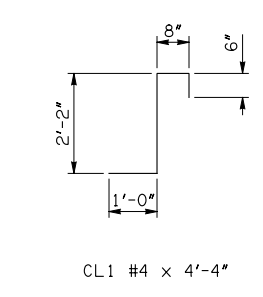


NOTE: F.F. = FAR FACE
N.F. = NEAR FACE

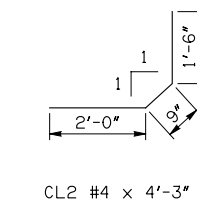
WING ELEVATION



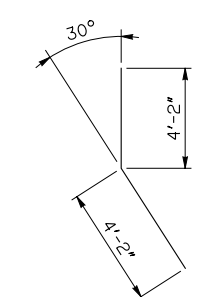
TYPICAL SECTION THRU WING



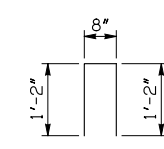
WL1 #6 x 13'-10"
WL2 #5 x 10'-3"
WL3 #5 x 4'-8/2" AVG.



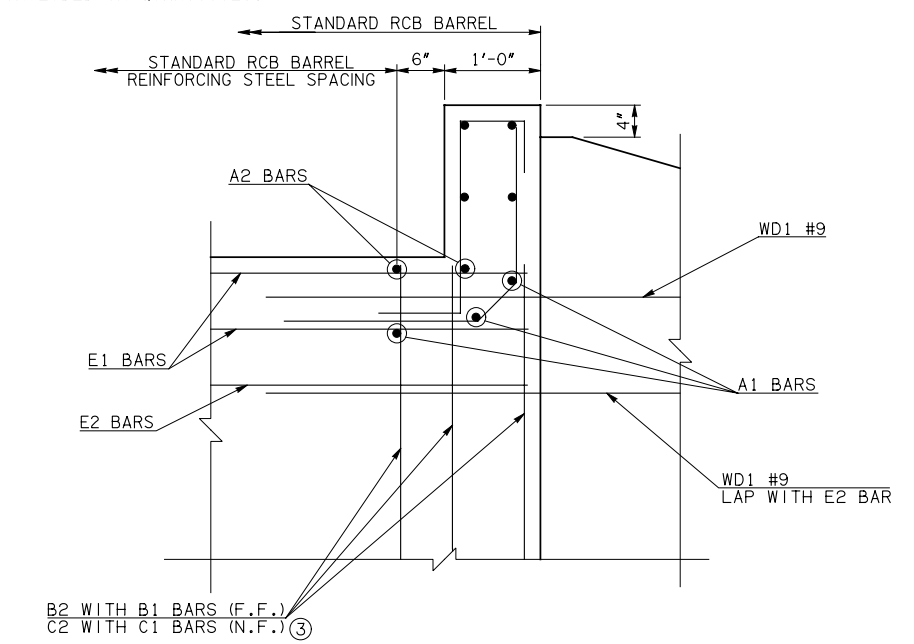
CL2 #4 x 4'-3"



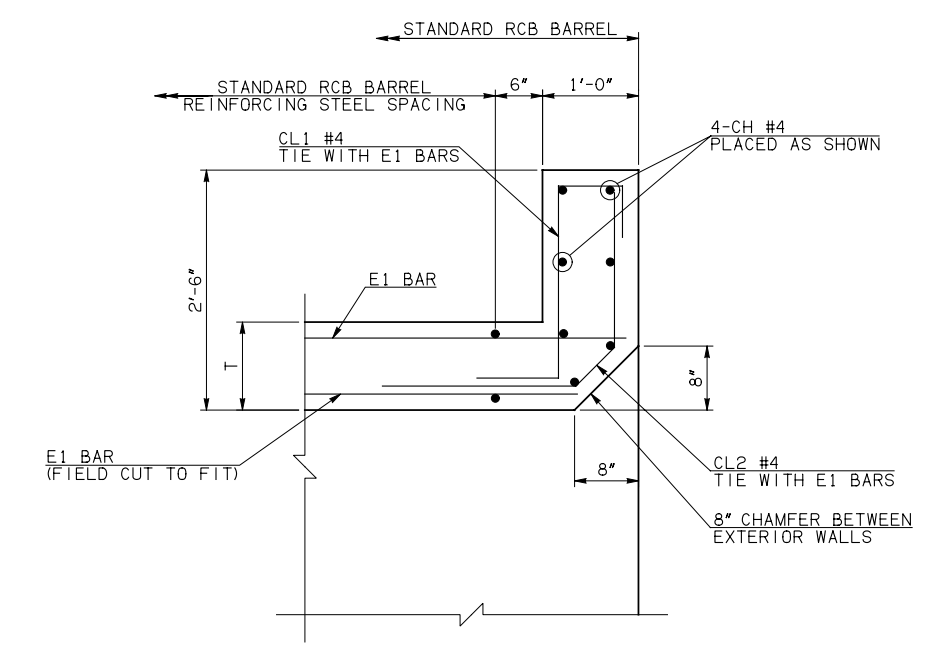
WD1 #9 x 8'-4"



U1 #4 x 3'-0"



HEADWALL DETAIL AT EXTERIOR WALL



HEADWALL DETAIL AT MIDSPAN

APPROVED BY BRIDGE ENGINEER *Debra J. Nisch* DATE 4/09/09

OKLAHOMA DEPT. OF TRANSPORTATION
BRIDGE STANDARD (ENGLISH)
RCB CULVERTS - END SECTION DETAILS
SINGLE CELL - 9'-0" HEIGHT - 0°
SHEET NO. 2 OF 2

1999 SPECIFICATIONS	RCB-E1-H9-0-2	OOE
---------------------	---------------	-----

B-585E