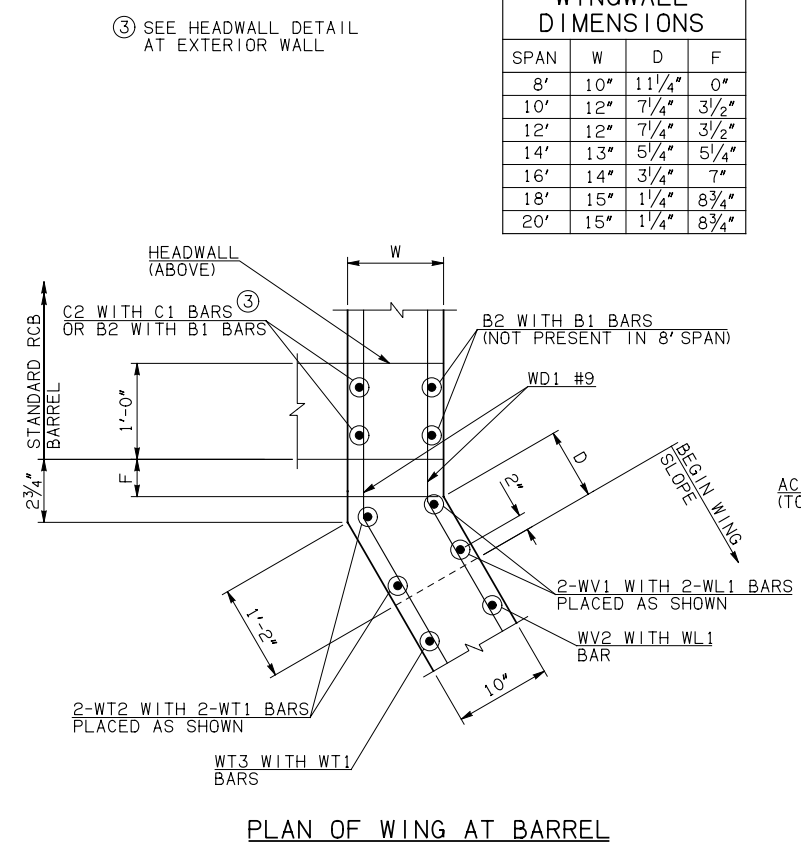
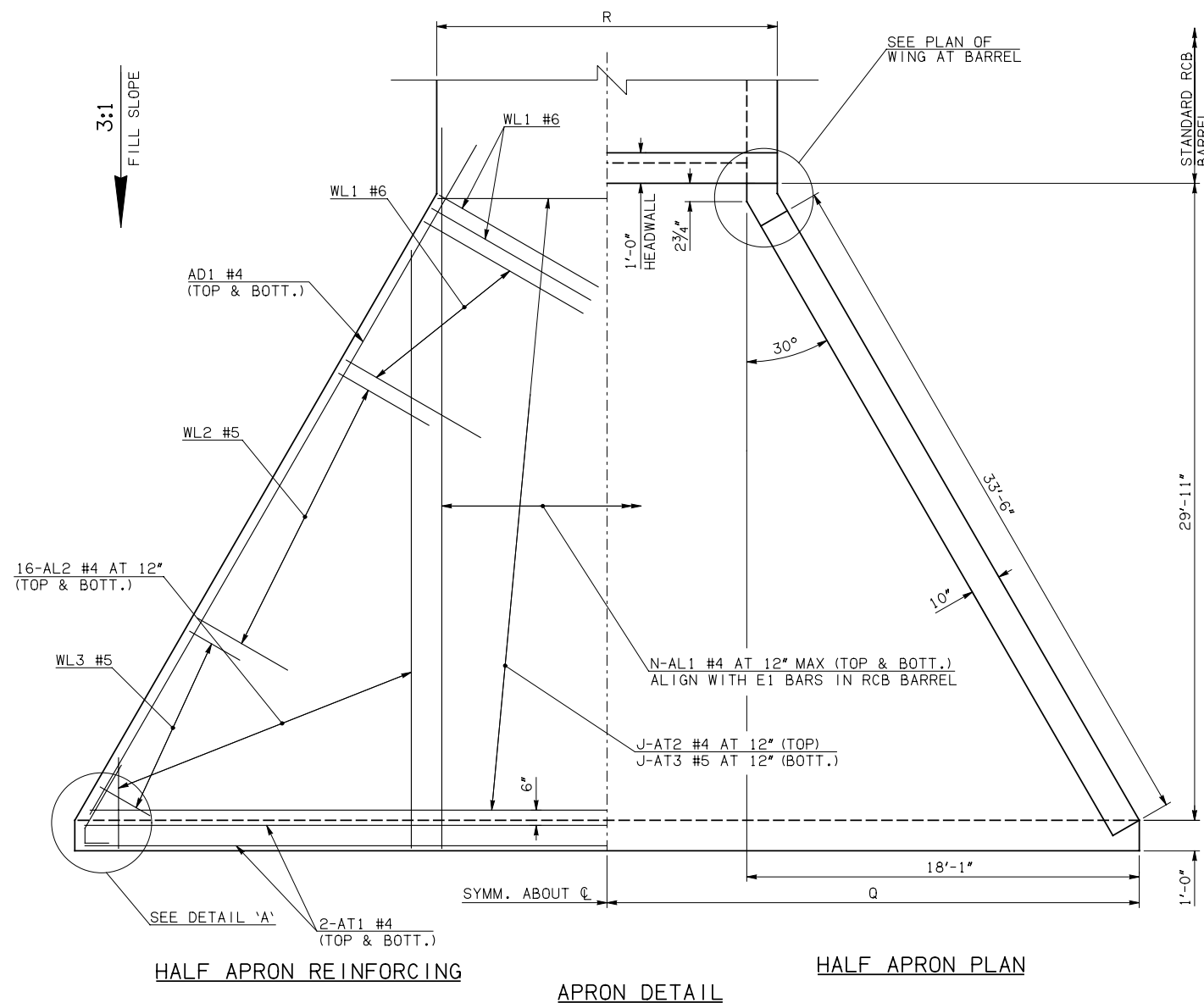
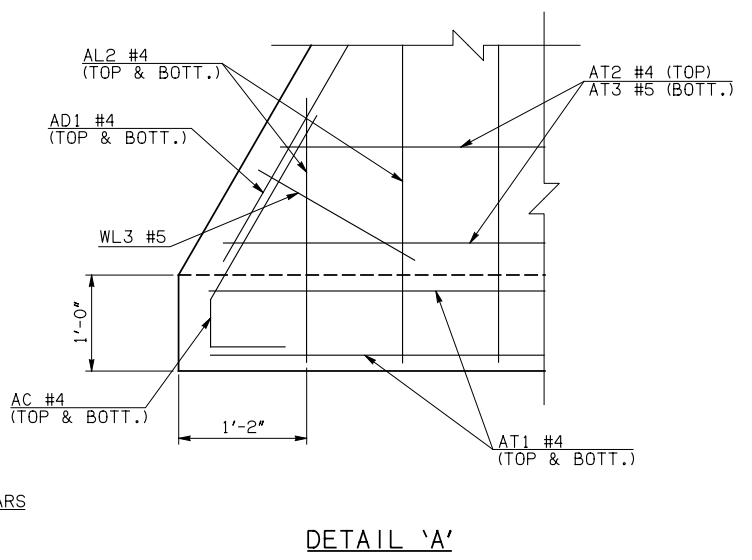


DESCRIPTION	REVISIONS	DATE

WINGWALL DIMENSIONS			
SPAN	W	D	F
8'	10"	11 1/4"	0"
10'	12"	7 1/4"	3 1/2"
12'	12"	7 1/4"	3 1/2"
14'	13"	5 1/4"	5 1/4"
16'	14"	3 1/4"	7"
18'	15"	1 1/4"	8 3/4"
20'	15"	1 1/4"	8 3/4"



APRON VARIABLES					
SPAN	DIM. R	DIM. Q	QTY. J	QTY. N	
8'	9'-8"	22'-1"	30	10	
10'	12'-0"	23'-1"	30	14	
12'	14'-0"	24'-1"	30	16	
14'	16'-2"	25'-1"	30	18	
16'	18'-4"	26'-1"	30	20	
18'	20'-6"	27'-1"	30	22	
20'	22'-6"	28'-1"	30	24	



WINGWALL BAR LIST				
ONE WINGWALL SHOWN; TWO REQUIRED				
MARK	SIZE	QTY.	FORM	REMARKS
WD1	#9	18	BNT	8'-4"
WH1	#4	2	STR	34'-6"
WH2	#4	18	STR	17'-10 1/2" AVG. 4'-0" TO 31'-9"
WH3	#5	2	STR	34'-8"
WL1	#6	10	BNT	12'-9"
WL2	#5	29	BNT	10'-0"
WL3	#5	10	BNT	4'-8" AVG. 3'-4" TO 6'-0"
WT1	#4	25	STR	2'-10"
WT2	#4	2	STR	10'-0"
WT3	#4	23	STR	6'-8" AVG. 3'-6" TO 9'-10"
WT4	#4	10	STR	2'-8" AVG. 1'-4" TO 4'-0"
WV1	#5	2	STR	10'-0"
WV2	#5	23	STR	6'-8" AVG. 3'-6" TO 9'-10"
U1	#4	1	BNT	2'-8"

- ① 4-SETS OF 16-AL2 BARS REQUIRED
- ② 2-SETS OF 9-WH2 BARS REQUIRED

APRON AND HEADWALL BAR LIST

ONE APRON AND ONE HEADWALL SHOWN																							
MARK	SIZE	FORM	8' SPAN			10' SPAN			12' SPAN			14' SPAN			16' SPAN			18' SPAN			20' SPAN		
			QTY.	LENGTH	REMARKS	QTY.	LENGTH	REMARKS	QTY.	LENGTH	REMARKS	QTY.	LENGTH	REMARKS	QTY.	LENGTH	REMARKS	QTY.	LENGTH	REMARKS	QTY.	LENGTH	REMARKS
AC	#4	BNT	4	3'-8"		4	3'-8"		4	3'-8"		4	3'-8"		4	3'-8"		4	3'-8"		4	3'-8"	
AD1	#4	STR	4	36'-6"		4	36'-6"		4	36'-6"		4	36'-6"		4	36'-6"		4	36'-6"		4	36'-6"	
AL1	#4	STR	20	32'-8"		28	32'-8"		32	32'-8"		36	32'-8"		40	32'-8"		44	32'-8"		48	32'-8"	
AL2	#4	STR	64	15'-5 1/2" AVG.	2'-6" TO 28'-5"	64	15'-5 1/2" AVG.	2'-6" TO 28'-5"	64	15'-5 1/2" AVG.	2'-6" TO 28'-5"	64	15'-5 1/2" AVG.	2'-6" TO 28'-5"	64	15'-5 1/2" AVG.	2'-6" TO 28'-5"	64	15'-5 1/2" AVG.	2'-6" TO 28'-5"	64	15'-5 1/2" AVG.	2'-6" TO 28'-5"
AT1	#4	STR	4	43'-10"		4	45'-10"		4	47'-10"		4	49'-10"		4	51'-10"		4	53'-10"		4	55'-10"	
AT2	#4	STR	30	26'-7" AVG.	9'-10" TO 43'-4"	30	28'-7" AVG.	11'-10" TO 45'-4"	30	30'-7" AVG.	13'-10" TO 47'-4"	30	32'-7" AVG.	15'-10" TO 49'-4"	30	34'-7" AVG.	17'-10" TO 51'-4"	30	36'-7" AVG.	19'-10" TO 53'-4"	30	38'-7" AVG.	21'-10" TO 55'-4"
AT3	#5	STR	30	26'-7" AVG.	9'-10" TO 43'-4"	30	28'-7" AVG.	11'-10" TO 45'-4"	30	30'-7" AVG.	13'-10" TO 47'-4"	30	32'-7" AVG.	15'-10" TO 49'-4"	30	34'-7" AVG.	17'-10" TO 51'-4"	30	36'-7" AVG.	19'-10" TO 53'-4"	30	38'-7" AVG.	21'-10" TO 55'-4"
CH	#4	STR	4	9'-4"		4	11'-8"		4	13'-8"		4	15'-10"		4	18'-0"		4	20'-2"		4	22'-2"	
CL1	#4	BNT	10	4'-4"		14	4'-4"		16	4'-4"		18	4'-4"		20	4'-4"		22	4'-4"		24	4'-4"	
CL2	#4	BNT	10	4'-3"		14	4'-3"		16	4'-3"		18	4'-3"		20	4'-3"		22	4'-3"		24	4'-3"	

QUANTITIES								
ITEM	UNIT	8' SPAN	10' SPAN	12' SPAN	14' SPAN	16' SPAN	18' SPAN	20' SPAN
CLASS AA CONCRETE	CY	43.70	46.00	48.40	50.70	53.00	55.40	57.70
REINFORCING STEEL	LB	6270.00	6610.00	6820.00	7030.00	7240.00	7460.00	7670.00

NOTE: QUANTITIES ABOVE ARE FOR ONE END SECTION, WHICH IS COMPRISED OF ONE HEADWALL, ONE APRON, AND TWO WINGWALLS. INCLUDED IN REINFORCING STEEL PAY ITEM QUANTITY IS THE WEIGHT OF ADDITIONAL RCB BARREL REINFORCING STEEL REQUIRED AS SHOWN.

APPROVED BY BRIDGE ENGINEER *Debra J. Nusch* DATE 4/09/09

OKLAHOMA DEPT. OF TRANSPORTATION
BRIDGE STANDARD (ENGLISH)
RCB CULVERTS - END SECTION DETAILS
SINGLE CELL - 8'-0" HEIGHT - 0°
SHEET NO. 1 OF 2

1999 SPECIFICATIONS RCB-E1-H8-0-1 OOE B-582E