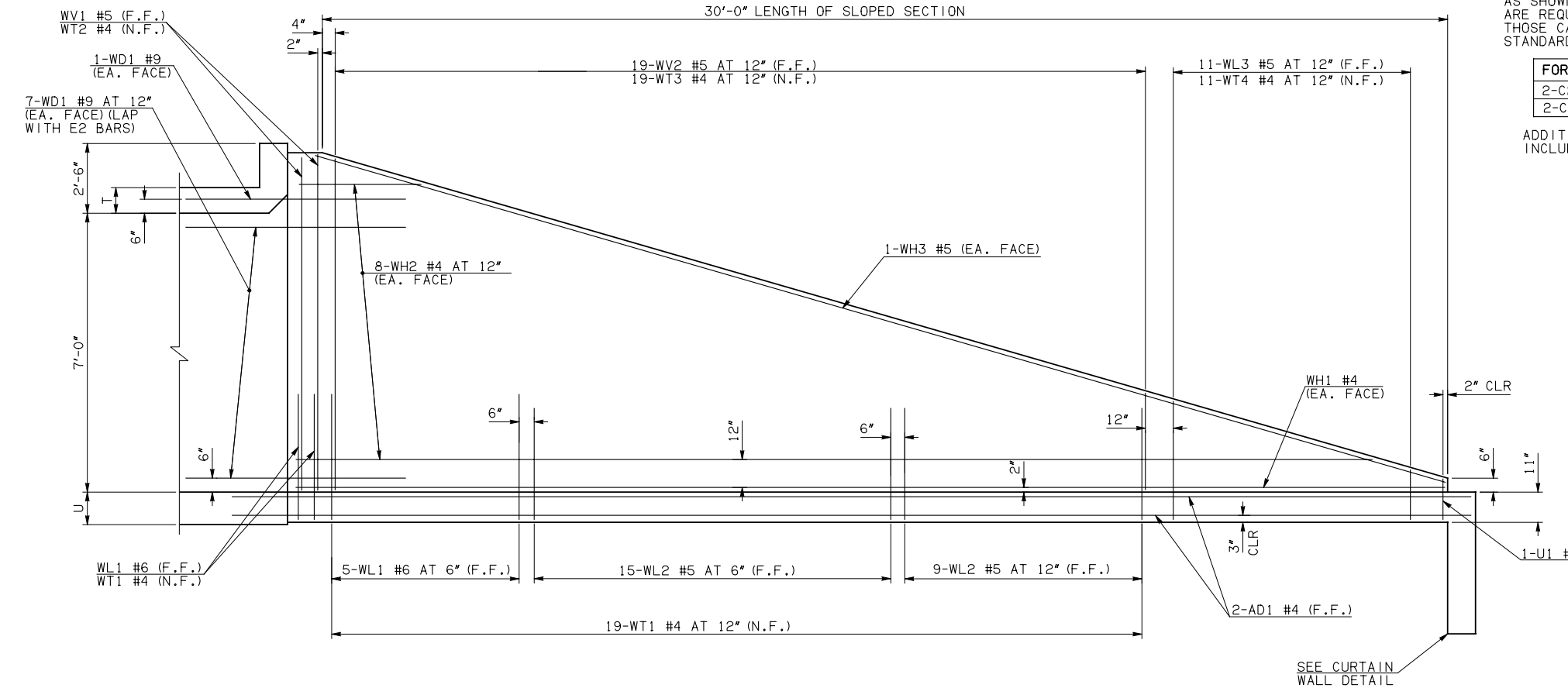


DESCRIPTION	REVISIONS	DATE

④ NOTE: TO CONSTRUCT ONE END SECTION AS SHOWN, THE FOLLOWING BARS ARE REQUIRED IN ADDITION TO THOSE CALLED IN THE RCB BARREL STANDARD:

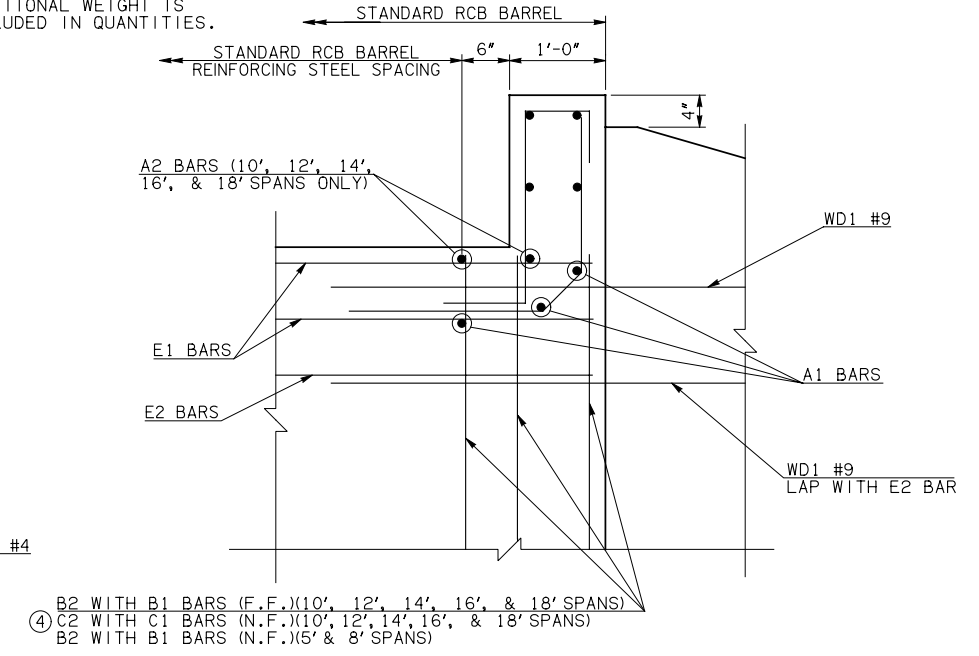
FOR 10', 12', 14', 16, & 18' SPANS
2-C2 BARS
2-C1 BARS

ADDITIONAL WEIGHT IS INCLUDED IN QUANTITIES.

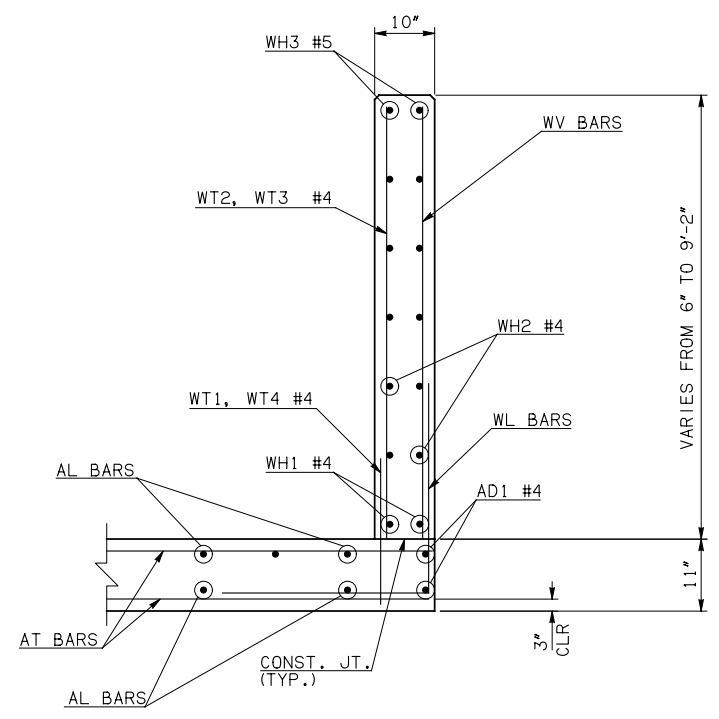


NOTE: F.F. = FAR FACE
N.F. = NEAR FACE

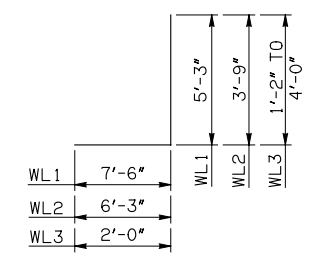
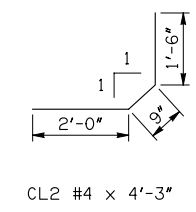
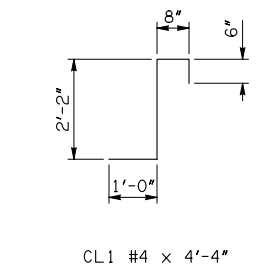
WING ELEVATION



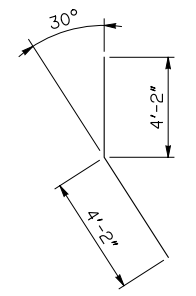
HEADWALL DETAIL AT EXTERIOR WALL



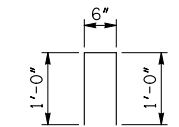
TYPICAL SECTION THRU WING



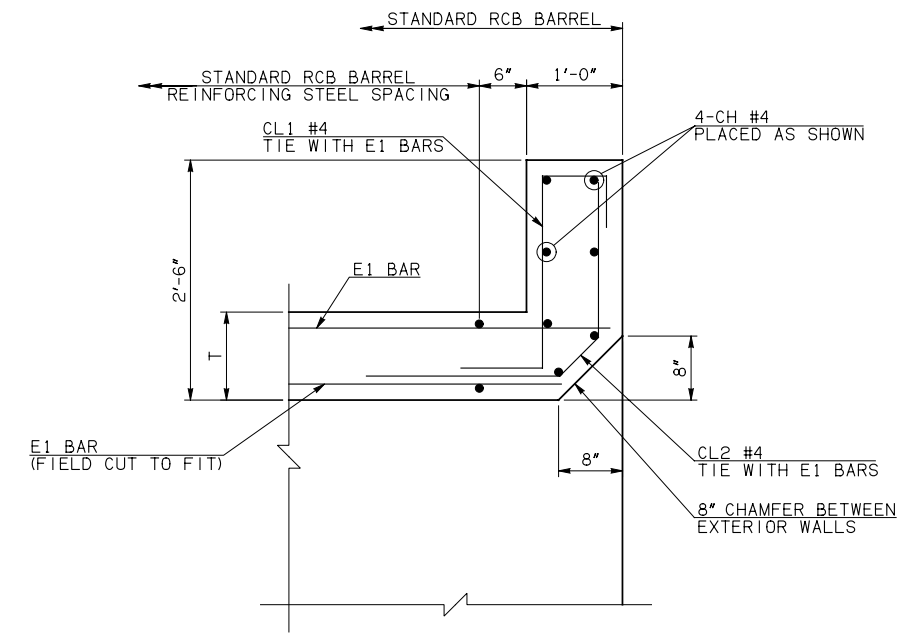
WL1 #6 x 12'-9"
WL2 #5 x 10'-0"
WL3 #5 x 4'-7" AVG.



WD1 #9 x 8'-4"



U1 #4 x 2'-6"



HEADWALL DETAIL AT MIDSPAN

APPROVED BY BRIDGE ENGINEER *Robert J. Muech* DATE 4/09/09

OKLAHOMA DEPT. OF TRANSPORTATION
BRIDGE STANDARD (ENGLISH)
RCB CULVERTS - END SECTION DETAILS
SINGLE CELL - 7'-0" HEIGHT - 0°
SHEET NO. 2 OF 2

1999 SPECIFICATIONS	RCB-E1-H7-0-2	OOE
---------------------	---------------	-----