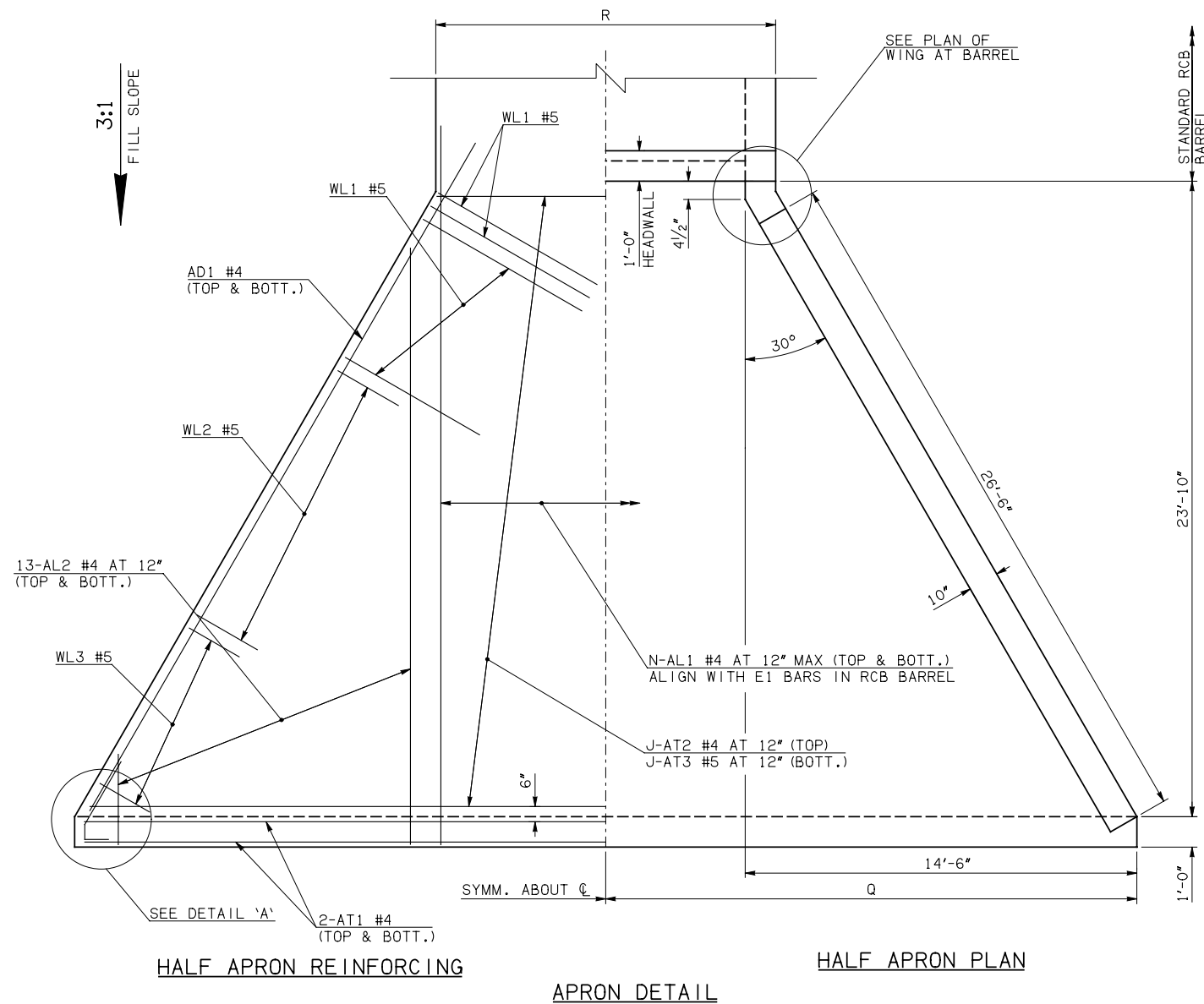
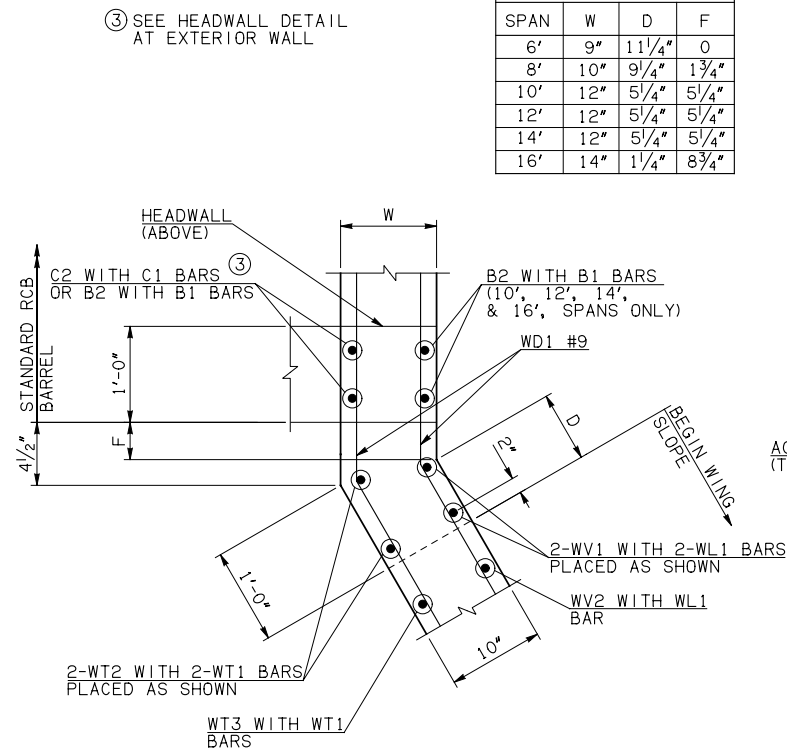


DESCRIPTION	REVISIONS	DATE

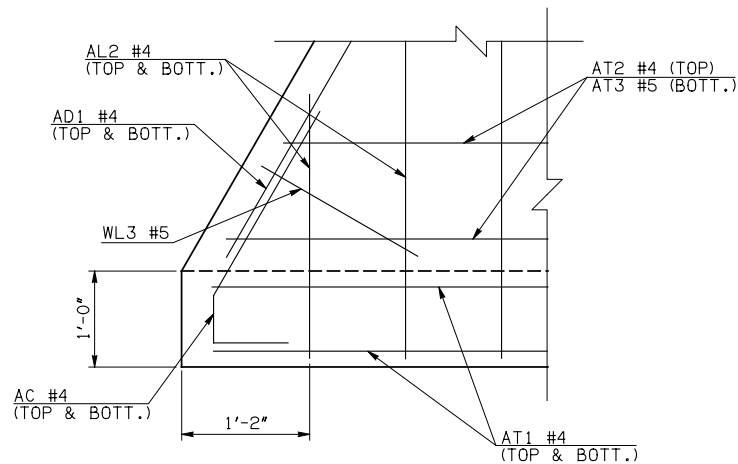
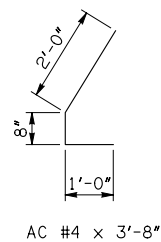


WINGWALL DIMENSIONS			
SPAN	W	D	F
6'	9"	11 $\frac{1}{4}$ "	0
8'	10"	9 $\frac{1}{4}$ "	1 $\frac{3}{4}$ "
10'	12"	5 $\frac{1}{4}$ "	5 $\frac{1}{4}$ "
12'	12"	5 $\frac{1}{4}$ "	5 $\frac{1}{4}$ "
14'	12"	5 $\frac{1}{4}$ "	5 $\frac{1}{4}$ "
16'	14"	1 $\frac{1}{4}$ "	8 $\frac{3}{4}$ "



PLAN OF WING AT BARREL

APRON VARIABLES				
SPAN	DIM. R	DIM. Q	QTY. J	QTY. N
6'	7'-6"	17'-6"	24	8
8'	9'-8"	18'-6"	24	10
10'	12'-0"	19'-6"	24	14
12'	14'-0"	20'-6"	24	16
14'	16'-0"	21'-6"	24	18
16'	18'-4"	22'-6"	24	20



DETAIL 'A'

WINGWALL BAR LIST					
ONE WINGWALL SHOWN; TWO REQUIRED					
MARK	SIZE	QTY.	FORM	LENGTH	REMARKS
WD1	#9	14	BNT	8'-4"	
WH1	#4	2	STR	27'-4"	
WH2	#4	14	STR	14'-2 1/2" AVG.	3'-10" TO 24'-7"
WH3	#5	2	STR	27'-4"	
WL1	#5	16	BNT	8'-6"	
WL2	#5	9	BNT	4'-10"	
WL3	#5	10	BNT	4'-7 1/2" AVG.	3'-4" TO 5'-11"
WT1	#4	18	STR	2'-10"	
WT2	#4	2	STR	8'-0"	
WT3	#4	16	STR	5'-8" AVG.	3'-6" TO 7'-10"
WT4	#4	10	STR	2'-7 1/2" AVG.	1'-4" TO 3'-11"
WV1	#5	2	STR	8'-0"	
WV2	#5	16	STR	5'-8" AVG.	3'-6" TO 7'-10"
U1	#4	1	BNT	2'-6"	

- ① 4-SETS OF 13-AL2 BARS REQUIRED
② 2-SETS OF 7-WH2 BARS REQUIRED

APRON AND HEADWALL BAR LIST

APRON AND HEADWALL BAR LIST																				
ONE APRON AND ONE HEADWALL SHOWN																				
MARK	SIZE	FORM	6' SPAN			8' SPAN			10' SPAN			12' SPAN			14' SPAN			16' SPAN		
			QTY.	LENGTH	REMARKS	QTY.	LENGTH	REMARKS	QTY.	LENGTH	REMARKS	QTY.	LENGTH	REMARKS	QTY.	LENGTH	REMARKS	QTY.	LENGTH	REMARKS
AC	#4	BNT	4	3'-8"		4	3'-8"		4	3'-8"		4	3'-8"		4	3'-8"		4	3'-8"	
AD1	#4	STR	4	29'-4"		4	29'-4"		4	29'-4"		4	29'-4"		4	29'-4"		4	29'-4"	
AL1	#4	STR	16	26'-7"		20	26'-7"		28	26'-7"		32	26'-7"		36	26'-7"		40	26'-7"	
AL2	#4	STR	52	12'-10½" AVG.	2'-6" TO 23'-3"	52	12'-10½" AVG.	2'-6" TO 23'-3"	52	12'-10½" AVG.	2'-6" TO 23'-3"	52	12'-10½" AVG.	2'-6" TO 23'-3"	52	12'-10½" AVG.	2'-6" TO 23'-3"	52	12'-10½" AVG.	2'-6" TO 23'-3"
AT1	#4	STR	4	34'-8"		4	36'-8"		4	38'-8"		4	40'-8"		4	42'-8"		4	44'-8"	
AT2	#4	STR	24	20'-10½" AVG.	7'-7" TO 34'-2"	24	22'-10½" AVG.	9'-7" TO 36'-2"	24	24'-10½" AVG.	11'-7" TO 38'-2"	24	26'-10½" AVG.	13'-7" TO 40'-2"	24	28'-10½" AVG.	15'-7" TO 42'-2"	24	30'-10½" AVG.	17'-7" TO 44'-2"
AT3	#5	STR	24	20'-10½" AVG.	7'-7" TO 34'-2"	24	22'-10½" AVG.	9'-7" TO 36'-2"	24	24'-10½" AVG.	11'-7" TO 38'-2"	24	26'-10½" AVG.	13'-7" TO 40'-2"	24	28'-10½" AVG.	15'-7" TO 42'-2"	24	30'-10½" AVG.	17'-7" TO 44'-2"
CH	#4	STR	4	7'-2"		4	9'-4"		4	11'-8"		4	13'-8"		4	15'-8"		4	18'-0"	
CL1	#4	BNT	8	4'-4"		10	4'-4"		14	4'-4"		16	4'-4"		18	4'-4"		20	4'-4"	
CL2	#4	BNT	8	4'-3"		10	4'-3"		14	4'-3"		16	4'-3"		18	4'-3"		20	4'-3"	

QUANTITIES							
ITEM	UNIT	6' SPAN	8' SPAN	10' SPAN	12' SPAN	14' SPAN	16' SPAN
CLASS AA CONCRETE	CY	26.40	28.20	30.00	31.70	33.50	35.10
REINFORCING STEEL	LB	4040.00	4250.00	4490.00	4670.00	4840.00	5020.00

NOTE: QUANTITIES ABOVE ARE FOR ONE END SECTION, WHICH IS COMPRISED OF ONE HEADWALL, ONE APRON, AND TWO WINGWALLS. INCLUDED IN REINFORCING STEEL PAY ITEM QUANTITY IS THE WEIGHT OF ADDITIONAL RCB BARREL REINFORCING STEEL REQUIRED AS SHOWN.

APPROVED BY BRIDGE ENGINEER *Robert J. Nusch* DATE 4/09/09

OKLAHOMA DEPT. OF TRANSPORTATION
BRIDGE STANDARD (ENGLISH)
RCB CULVERTS - END SECTION DETAILS
SINGLE CELL - 6'-0" HEIGHT - 0°
SHEET NO. 1 OF 2

1999 SPECIFICATIONS

RCB-E1-H6-0-1

00E

B-578E
