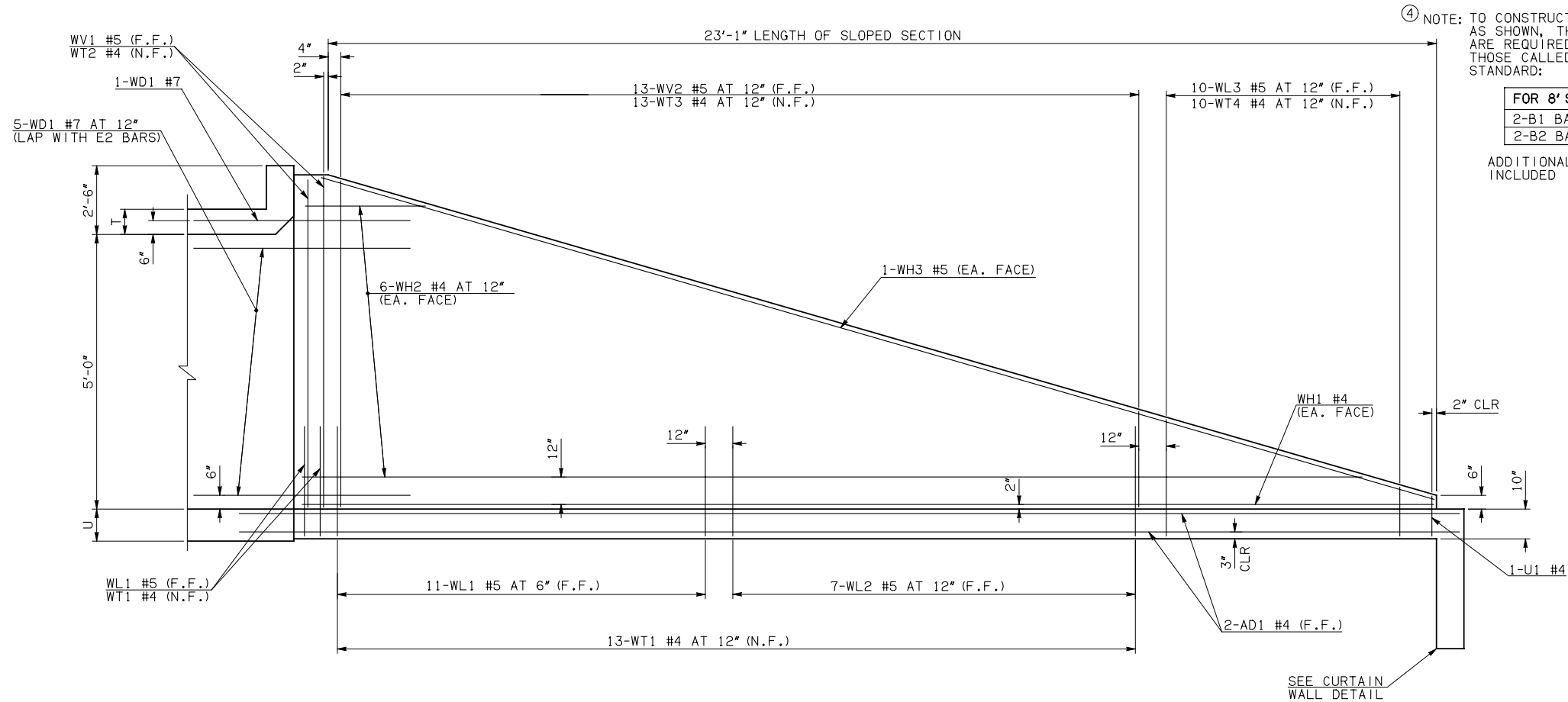


DESCRIPTION	REVISIONS	DATE



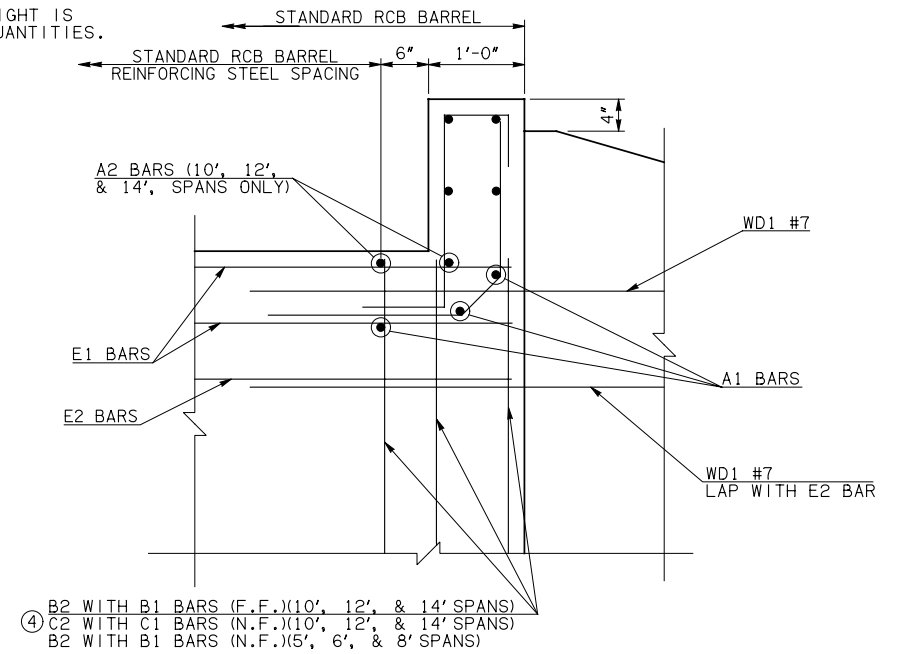
NOTE: F.F. = FAR FACE
N.F. = NEAR FACE

WING ELEVATION

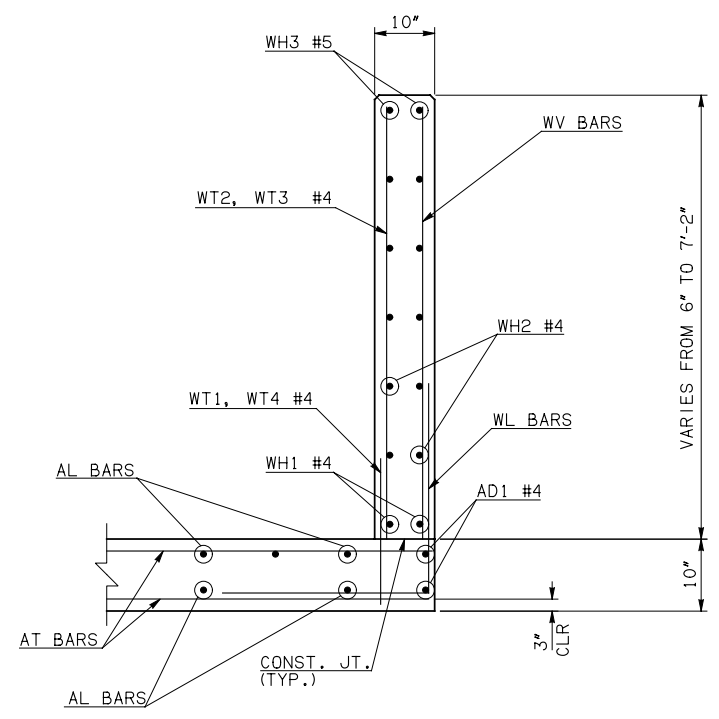
④ NOTE: TO CONSTRUCT ONE END SECTION AS SHOWN, THE FOLLOWING BARS ARE REQUIRED IN ADDITION TO THOSE CALLED IN THE RCB BARREL STANDARD:

FOR 8' SPAN	FOR 10', 12', & 14' SPANS
2-B1 BARS	2-C1 BARS
2-B2 BARS	2-C2 BARS

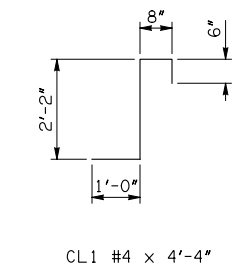
ADDITIONAL WEIGHT IS INCLUDED IN QUANTITIES.



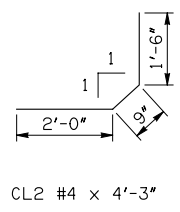
HEADWALL DETAIL AT EXTERIOR WALL



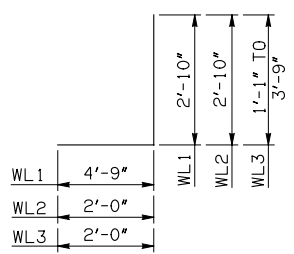
TYPICAL SECTION THRU WING



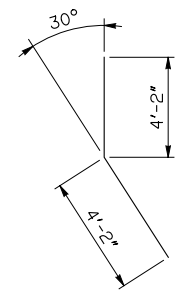
CL1 #4 x 4'-4"



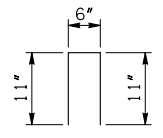
CL2 #4 x 4'-3"



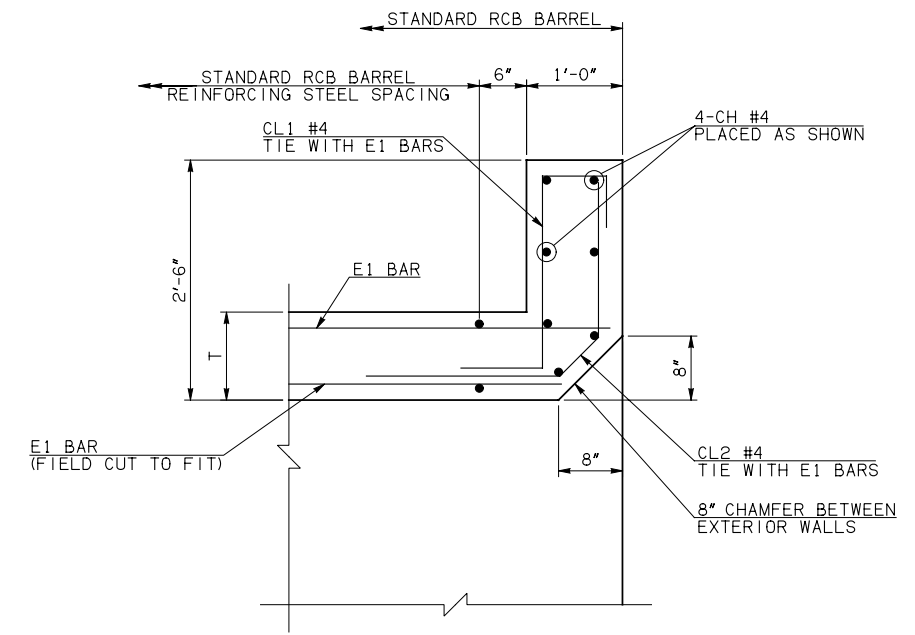
WL1 #5 x 7'-7"
WL2 #5 x 4'-10"
WL3 #5 x 4'-5" AVG.



WD1 #7 x 8'-4"



U1 #4 x 2'-4"



HEADWALL DETAIL AT MIDSPAN

APPROVED BY BRIDGE ENGINEER *Robert J. Nussler* DATE 4/09/09

OKLAHOMA DEPT. OF TRANSPORTATION
BRIDGE STANDARD (ENGLISH)
RCB CULVERTS - END SECTION DETAILS
SINGLE CELL - 5'-0" HEIGHT - 0°
SHEET NO. 2 OF 2

1999 SPECIFICATIONS	RCB-E1-H5-0-2	OOE
---------------------	---------------	-----