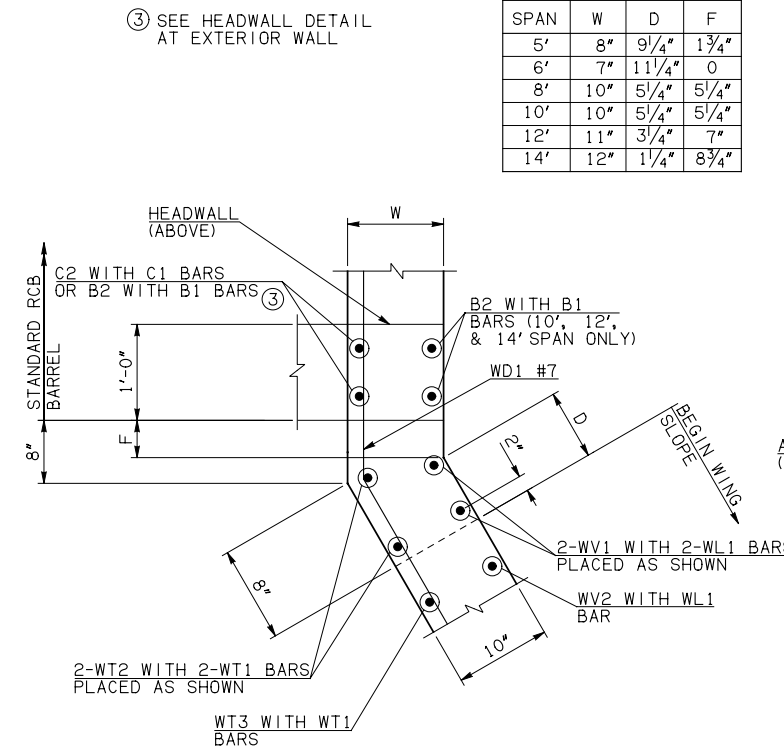


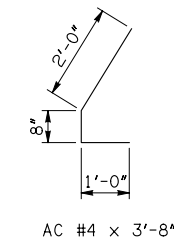
DESCRIPTION	REVISIONS	DATE

WINGWALL DIMENSIONS			
SPAN	W	D	F
5'	8"	9 1/4"	1 3/4"
6'	7"	11 1/4"	0
8'	10"	5 1/4"	5 1/4"
10'	10"	5 1/4"	5 1/4"
12'	11"	3 1/4"	7"
14'	12"	1 1/4"	8 3/4"

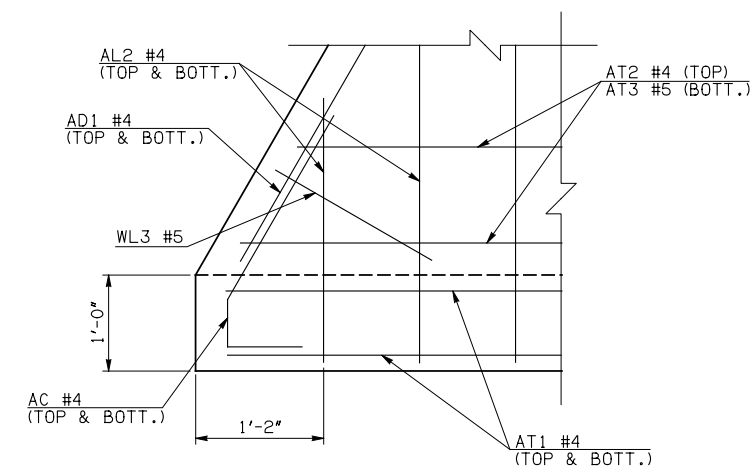


PLAN OF WING AT BARREL

APRON VARIABLES					
SPAN	DIM. R	DIM. Q	QTY. J	QTY. N	
5'	6'-4"	15'-2"	21	7	
6'	7'-2"	15'-8"	21	8	
8'	9'-8"	16'-8"	21	10	
10'	11'-8"	17'-8"	21	14	
12'	13'-10"	18'-8"	21	16	
14'	16'-0"	19'-8"	21	18	



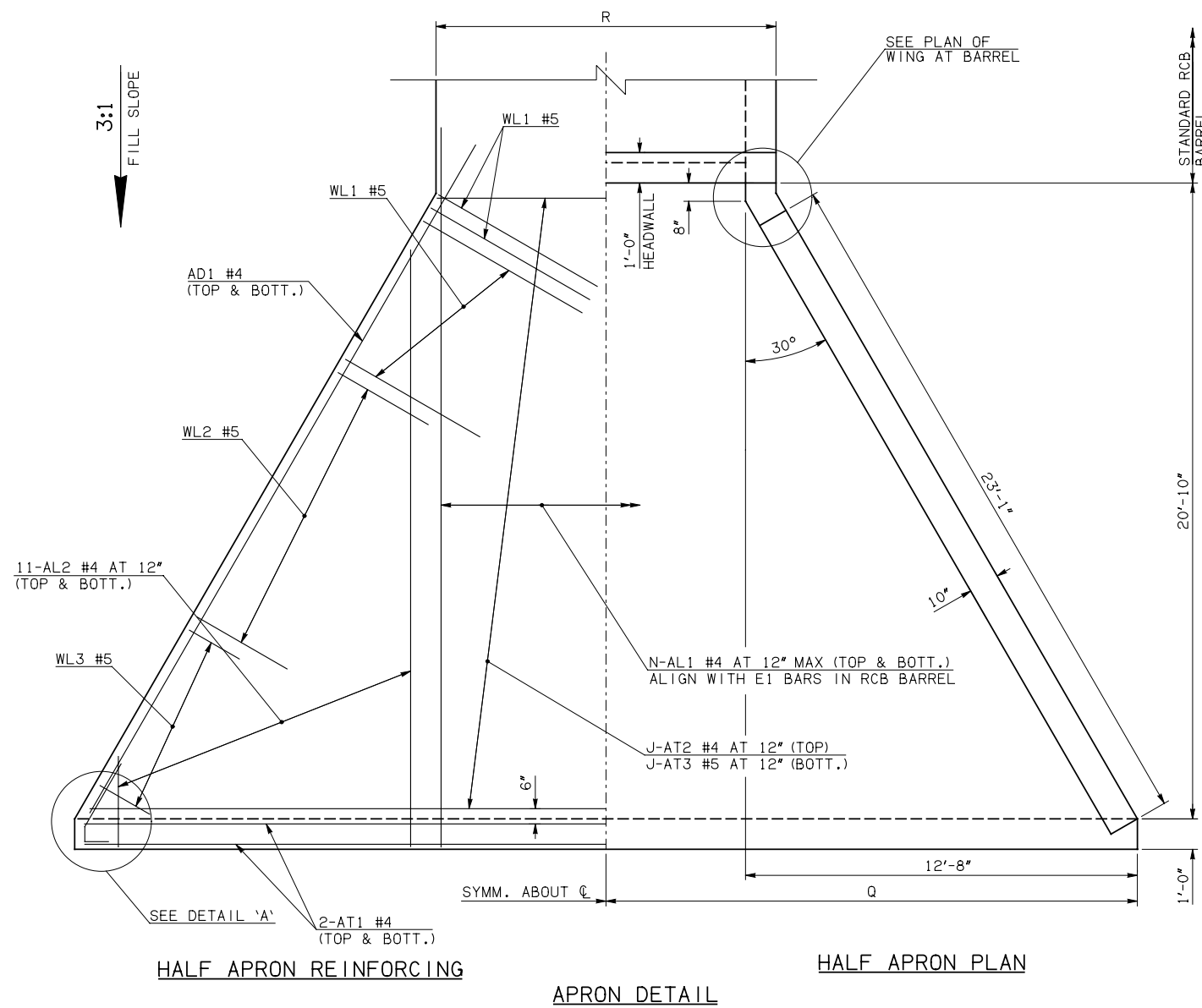
AC #4 x 3'-8"



DETAIL 'A'

WINGWALL BAR LIST				
ONE WINGWALL SHOWN; TWO REQUIRED				
MARK	SIZE	QTY.	FORM	REMARKS
WD1	#7	6	BNT	8'-4"
WH1	#4	2	STR	23'-7"
WH2	#4	12	STR	12'-2" AVG. 3'-6" TO 20'-10"
WH3	#5	2	STR	23'-10"
WL1	#5	13	BNT	7'-7"
WL2	#5	7	BNT	4'-10"
WL3	#5	10	BNT	4'-5" AVG. 3'-1" TO 5'-9"
WT1	#4	15	STR	2'-10"
WT2	#4	2	STR	7'-0"
WT3	#4	13	STR	5'-1 1/2" AVG. 3'-5" TO 6'-10"
WT4	#4	10	STR	2'-5" AVG. 1'-1" TO 3'-9"
WV1	#5	2	STR	7'-0"
WV2	#5	13	STR	5'-1 1/2" AVG. 3'-5" TO 6'-10"
U1	#4	1	BNT	2'-4"

- ① 4-SETS OF 11-AL2 BARS REQUIRED
- ② 2-SETS OF 6-WH2 BARS REQUIRED



HALF APRON REINFORCING

APRON DETAIL

HALF APRON PLAN

APRON AND HEADWALL BAR LIST

APRON AND HEADWALL BAR LIST																				
ONE APRON AND ONE HEADWALL SHOWN																				
MARK	SIZE	FORM	5' SPAN			6' SPAN			8' SPAN			10' SPAN			12' SPAN			14' SPAN		
			QTY.	LENGTH	REMARKS	QTY.	LENGTH	REMARKS	QTY.	LENGTH	REMARKS	QTY.	LENGTH	REMARKS	QTY.	LENGTH	REMARKS	QTY.	LENGTH	REMARKS
AC	#4	BNT	4	3'-8"		4	3'-8"		4	3'-8"		4	3'-8"		4	3'-8"		4	3'-8"	
AD1	#4	STR	4	25'-7"		4	25'-7"		4	25'-7"		4	25'-7"		4	25'-7"		4	25'-7"	
AL1	#4	STR	14	23'-8"		16	23'-8"		20	23'-8"		28	23'-8"		32	23'-8"		36	23'-8"	
AL2	#4	STR	44	11'-1 1/2" AVG.	2'-6" TO 19'-9"	44	11'-1 1/2" AVG.	2'-6" TO 19'-9"	44	11'-1 1/2" AVG.	2'-6" TO 19'-9"	44	11'-1 1/2" AVG.	2'-6" TO 19'-9"	44	11'-1 1/2" AVG.	2'-6" TO 19'-9"	44	11'-1 1/2" AVG.	2'-6" TO 19'-9"
AT1	#4	STR	4	30'-0"		4	31'-0"		4	33'-0"		4	35'-0"		4	37'-0"		4	39'-0"	
AT2	#4	STR	21	17'-11" AVG.	6'-4" TO 29'-6"	21	18'-11" AVG.	7'-4" TO 30'-6"	21	20'-11" AVG.	9'-4" TO 32'-6"	21	22'-11" AVG.	11'-4" TO 34'-6"	21	24'-11" AVG.	13'-4" TO 36'-6"	21	26'-11" AVG.	15'-4" TO 38'-6"
AT3	#5	STR	21	17'-11" AVG.	6'-4" TO 29'-6"	21	18'-11" AVG.	7'-4" TO 30'-6"	21	20'-11" AVG.	9'-4" TO 32'-6"	21	22'-11" AVG.	11'-4" TO 34'-6"	21	24'-11" AVG.	13'-4" TO 36'-6"	21	26'-11" AVG.	15'-4" TO 38'-6"
CH	#4	STR	4	6'-0"		4	6'-10"		4	9'-4"		4	11'-4"		4	13'-6"		4	15'-8"	
CL1	#4	BNT	7	4'-4"		8	4'-4"		10	4'-4"		14	4'-4"		16	4'-4"		18	4'-4"	
CL2	#4	BNT	7	4'-3"		8	4'-3"		10	4'-3"		14	4'-3"		16	4'-3"		18	4'-3"	

QUANTITIES						
ITEM	UNIT	5' SPAN	6' SPAN	8' SPAN	10' SPAN	14' SPAN
CLASS AA CONCRETE	CY	19.00	19.70	21.10	22.50	25.40
REINFORCING STEEL	LB	2710.00	2790.00	2970.00	3200.00	3520.00

NOTE: QUANTITIES ABOVE ARE FOR ONE END SECTION, WHICH IS COMPRISED OF ONE HEADWALL, ONE APRON, AND TWO WINGWALLS. INCLUDED IN REINFORCING STEEL PAY ITEM QUANTITY IS THE WEIGHT OF ADDITIONAL RCB BARREL REINFORCING STEEL REQUIRED AS SHOWN.

APPROVED BY BRIDGE ENGINEER *Debra J. Nisch* DATE 4/09/09

OKLAHOMA DEPT. OF TRANSPORTATION  
BRIDGE STANDARD (ENGLISH)  
RCB CULVERTS - END SECTION DETAILS  
SINGLE CELL - 5'-0" HEIGHT - 0°  
SHEET NO. 1 OF 2

1999 SPECIFICATIONS RCB-E1-H5-0-1 OOE  
B-576E