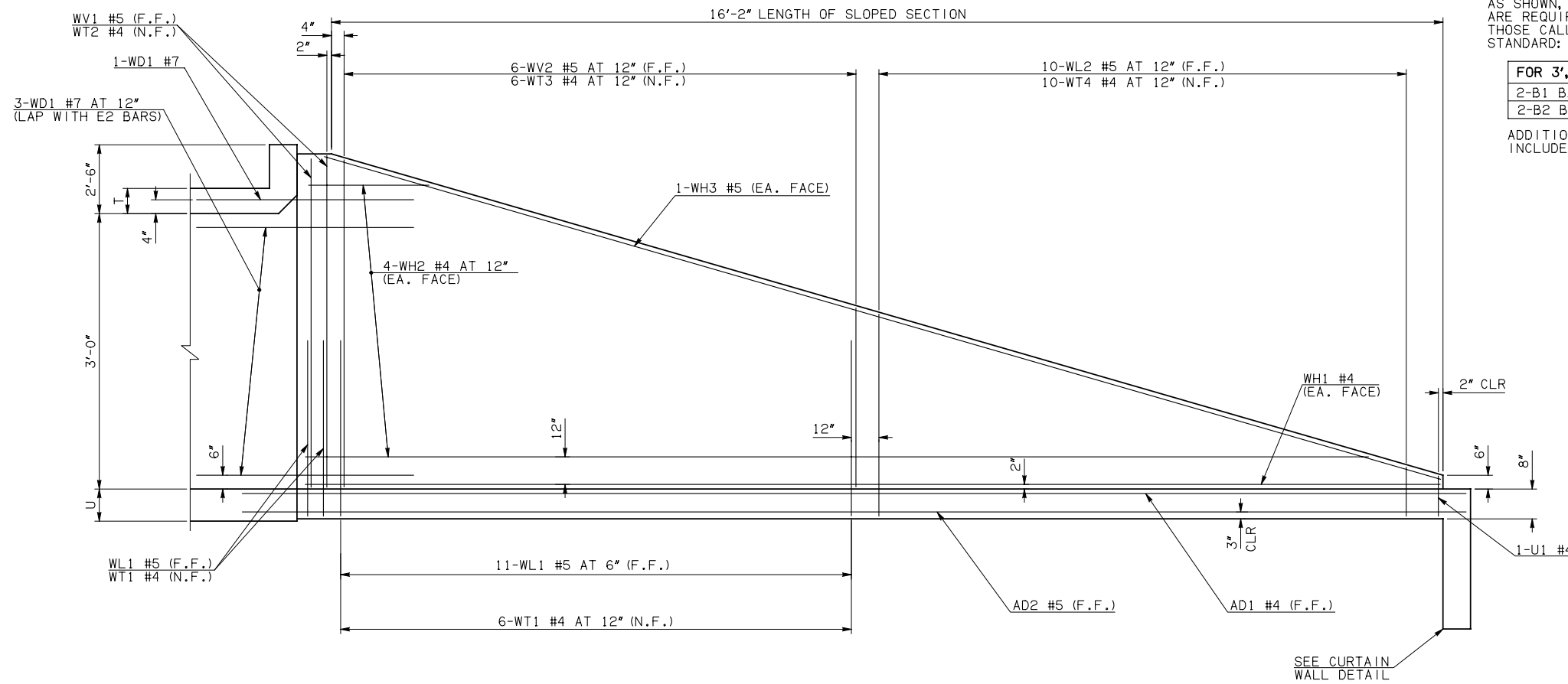


DESCRIPTION	REVISIONS	DATE

④ NOTE: TO CONSTRUCT ONE END SECTION AS SHOWN, THE FOLLOWING BARS ARE REQUIRED IN ADDITION TO THOSE CALLED IN THE RCB BARREL STANDARD:

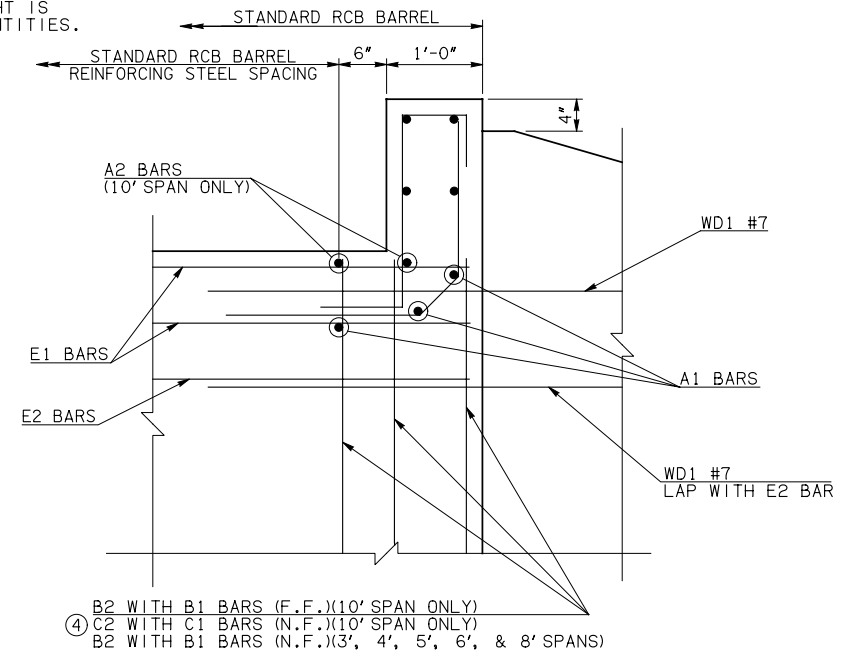
FOR 3', 4', 5', 6', & 8' SPANS	FOR 10' SPAN
2-B1 BARS	2-C1 BARS
2-B2 BARS	2-C2 BARS

ADDITIONAL WEIGHT IS INCLUDED IN QUANTITIES.

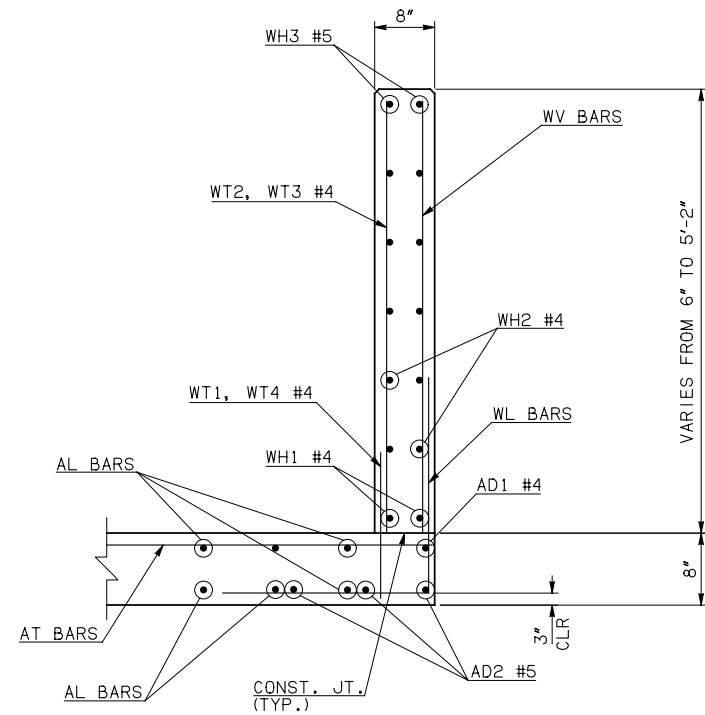


NOTE: F.F. = FAR FACE
N.F. = NEAR FACE

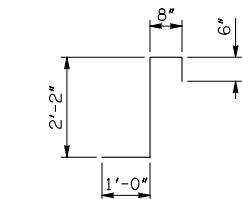
WING ELEVATION



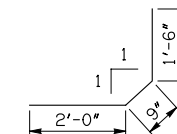
HEADWALL DETAIL AT EXTERIOR WALL



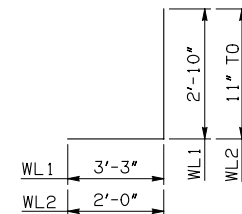
TYPICAL SECTION THRU WING



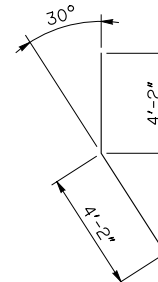
CL1 #4 x 4'-4"



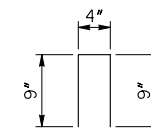
CL2 #4 x 4'-3"



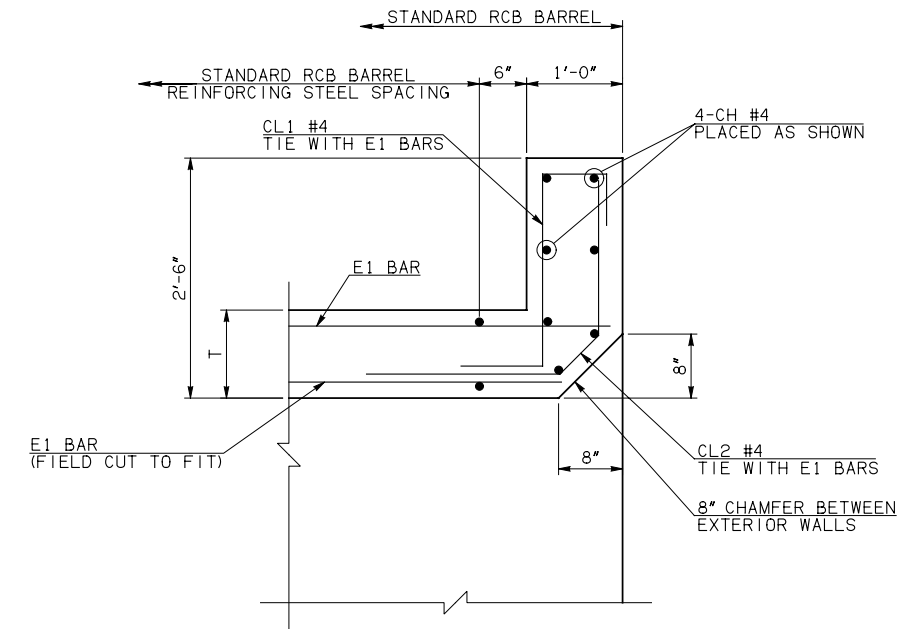
WL1 #5 x 6'-1"
WL2 #5 x 4'-2 1/2" AVG.



WD1 #7 x 8'-4"



U1 #4 x 1'-10"



HEADWALL DETAIL AT MIDSPAN

APPROVED BY BRIDGE ENGINEER *Robert J. Muech* DATE 4/09/09

OKLAHOMA DEPT. OF TRANSPORTATION
BRIDGE STANDARD (ENGLISH)
RCB CULVERTS - END SECTION DETAILS
SINGLE CELL - 3'-0" HEIGHT - 0°
SHEET NO. 2 OF 2

1999 SPECIFICATIONS

RCB-E1-H3-0-2

OOE

B-573E