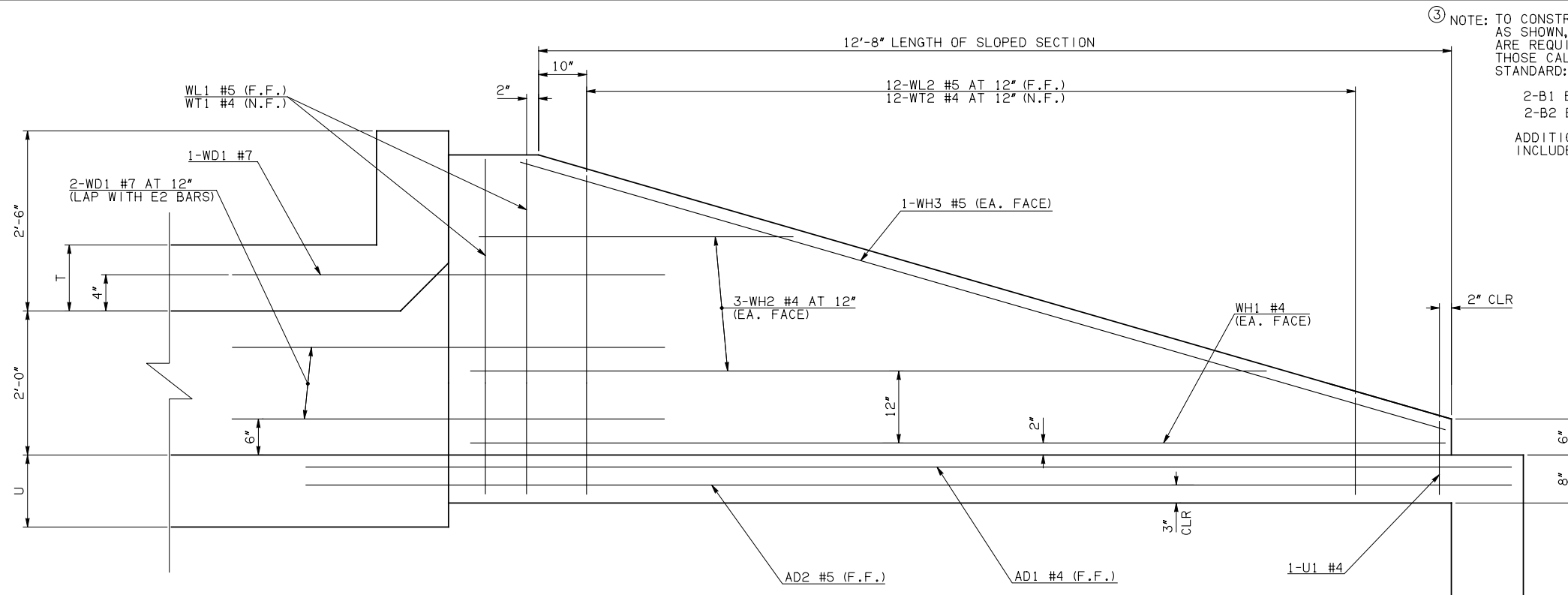
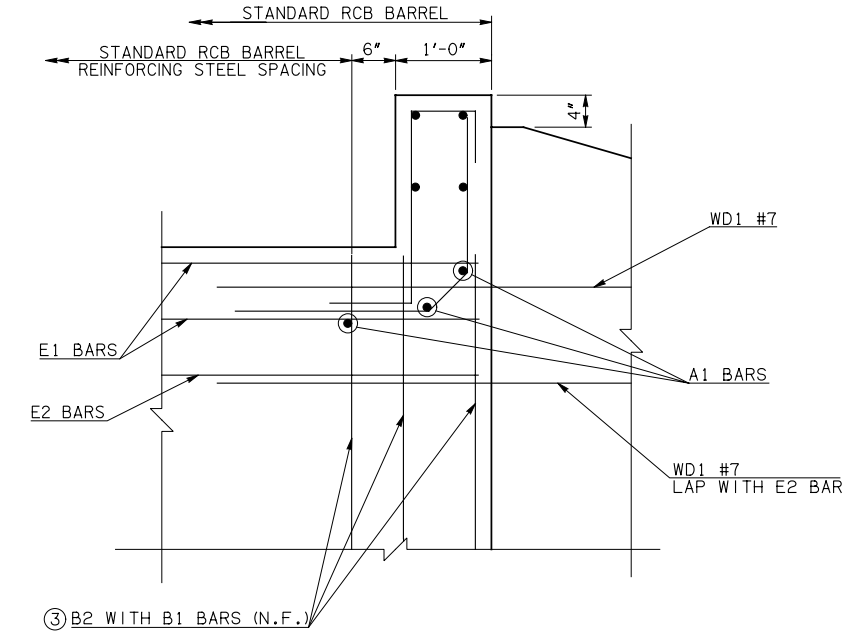


DESCRIPTION	REVISIONS	DATE



③ NOTE: TO CONSTRUCT ONE END SECTION AS SHOWN, THE FOLLOWING BARS ARE REQUIRED IN ADDITION TO THOSE CALLED IN THE RCB BARREL STANDARD:
 2-B1 BARS
 2-B2 BARS
 ADDITIONAL WEIGHT IS INCLUDED IN QUANTITIES.

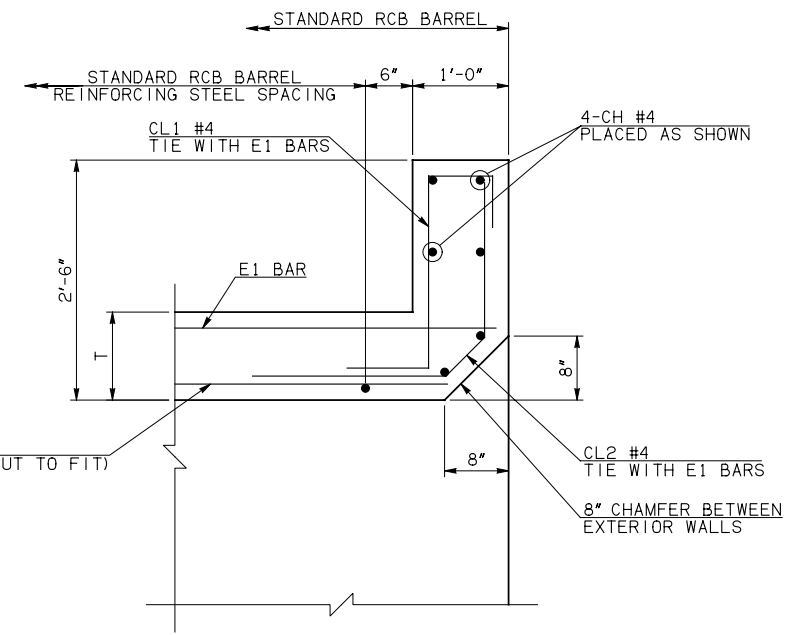


HEADWALL DETAIL AT EXTERIOR WALL

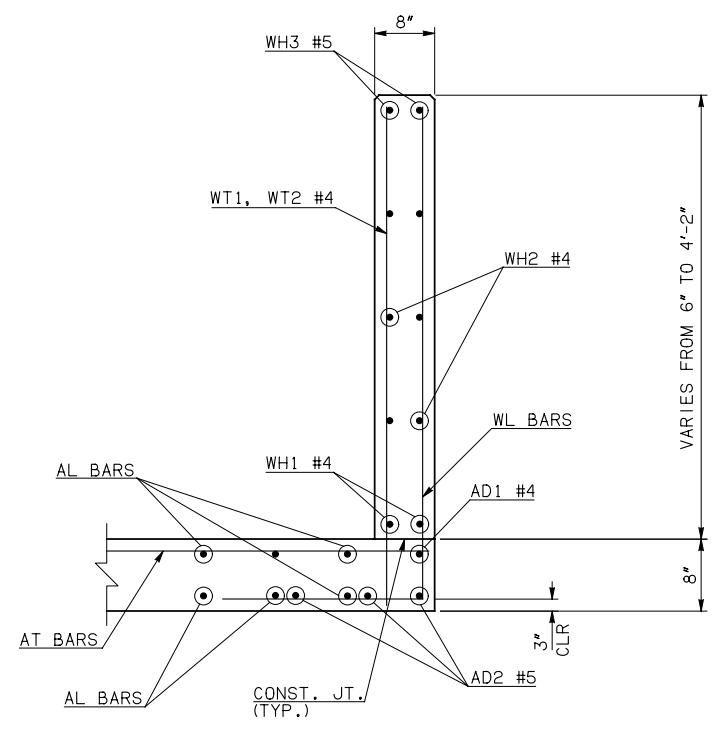
NOTE: F.F. = FAR FACE
 N.F. = NEAR FACE

WING ELEVATION

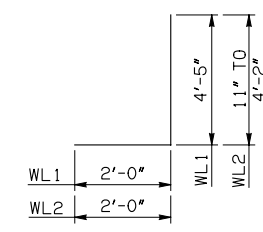
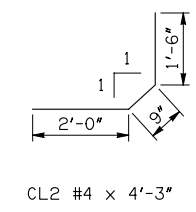
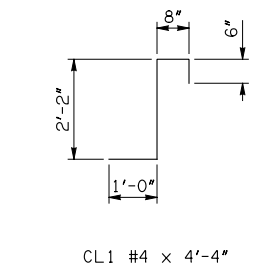
SEE CURTAIN WALL DETAIL



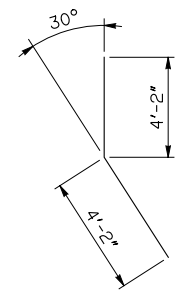
HEADWALL DETAIL AT MIDSPAN



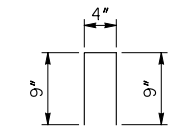
TYPICAL SECTION THRU WING



WL1 #5 x 6'-5"
 WL2 #5 x 4'-6 1/2" AVG.



WD1 #7 x 8'-4"



U1 #4 x 1'-10"

APPROVED BY BRIDGE ENGINEER *Debra J. Nisch* DATE 4/09/09

OKLAHOMA DEPT. OF TRANSPORTATION
 BRIDGE STANDARD (ENGLISH)
 RCB CULVERTS - END SECTION DETAILS
 SINGLE CELL - 2'-0" HEIGHT - 0°
 SHEET NO. 2 OF 2

1999 SPECIFICATIONS	RCB-E1-H2-0-2	OOE
---------------------	---------------	-----