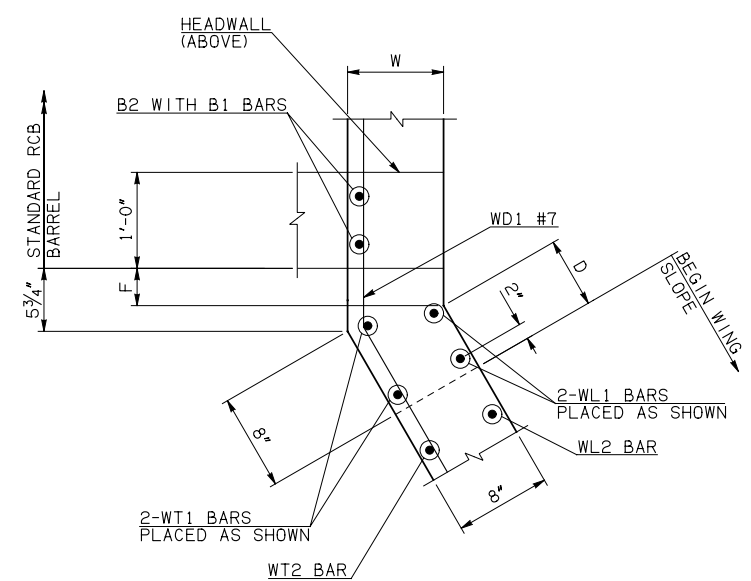
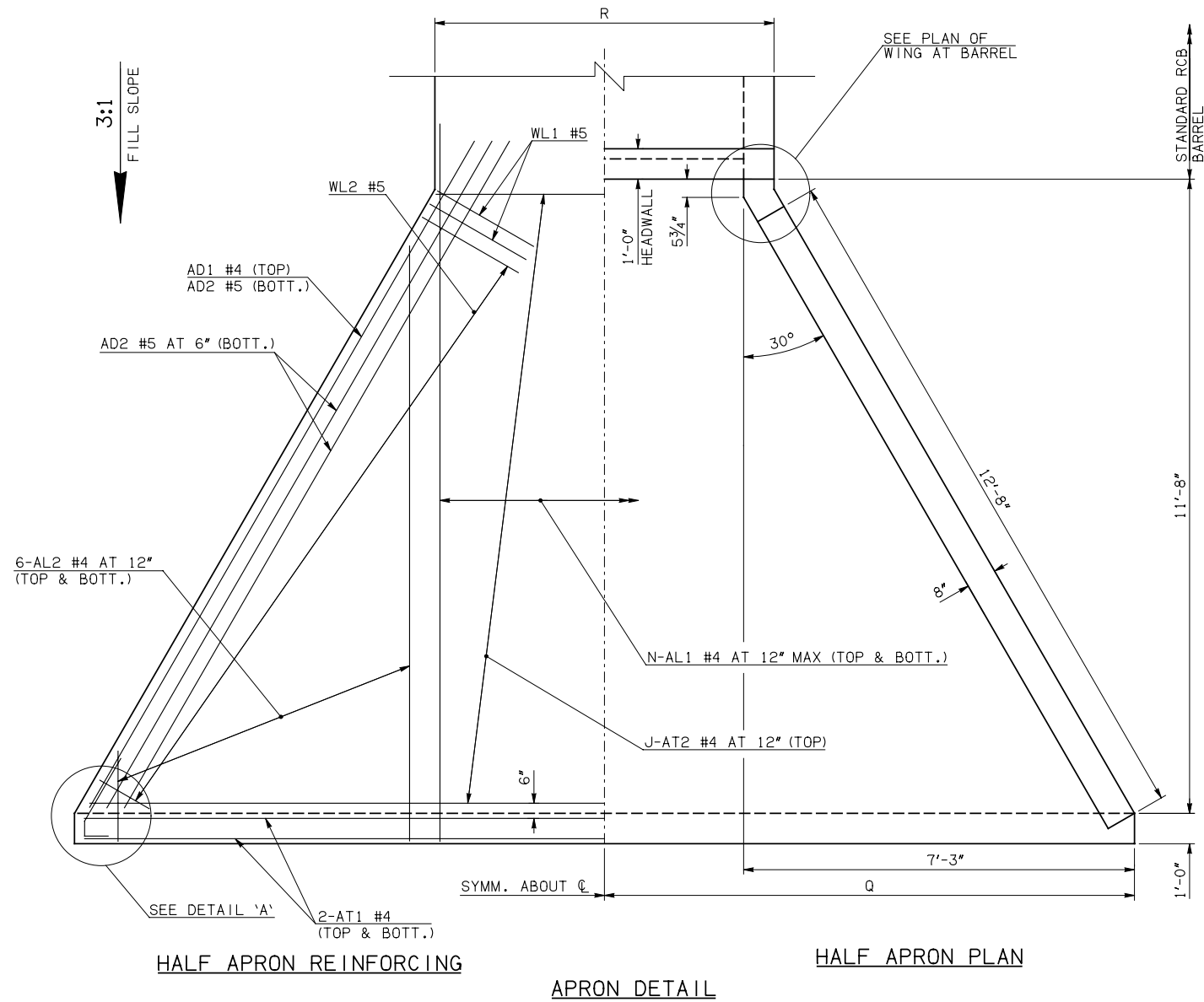


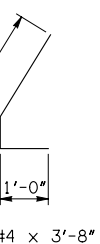
DESCRIPTION	REVISIONS	DATE

WINGWALL DIMENSIONS			
SPAN	W	D	F
3'	6"	9 3/4"	0
4'	7"	7 3/4"	1 3/4"
5'	6"	9 3/4"	0

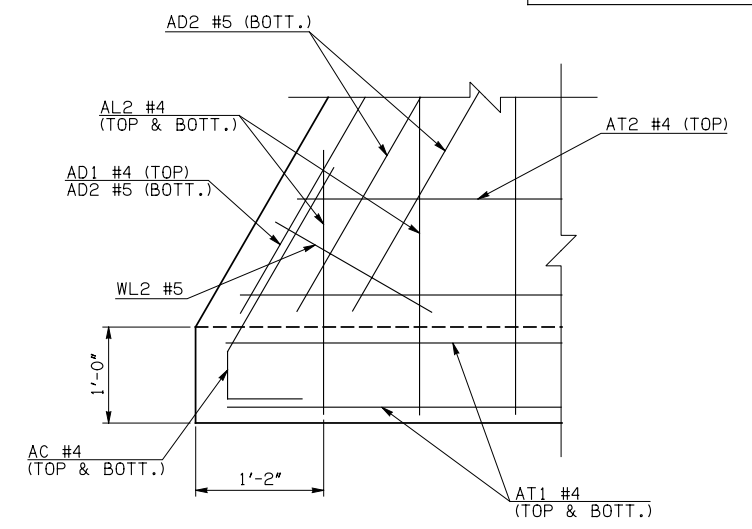


PLAN OF WING AT BARREL

APRON VARIABLES					
SPAN	DIM. R	DIM. Q	QTY. J	QTY. N	
3'	4'-0"	8'-9"	12	5	
4'	5'-2"	9'-3"	12	6	
5'	6'-0"	9'-9"	12	7	



AC #4 x 3'-8"



DETAIL 'A'

WINGWALL BAR LIST				
ONE WINGWALL SHOWN; TWO REQUIRED				
MARK	SIZE	QTY.	FORM	REMARKS
WD1	#7	3	BNT	8'-4"
WH1	#4	2	STR	13'-2"
WH2	#4	6	STR	6'-11 1/2" AVG. 3'-6" TO 10'-5"
WH3	#5	2	STR	13'-0"
WL1	#5	2	BNT	6'-5"
WL2	#5	12	BNT	4'-6 1/2" AVG. 2'-11" TO 6'-2"
WT1	#4	2	STR	4'-5"
WT2	#4	12	STR	2'-6 1/2" AVG. 11" TO 4'-2"
U1	#4	1	BNT	1'-10"

- ① 4-SETS OF 6-AL2 BARS REQUIRED
- ② 2-SETS OF 3-WH2 BARS REQUIRED

APRON AND HEADWALL BAR LIST											
ONE APRON AND ONE HEADWALL SHOWN											
MARK	SIZE	FORM	3' SPAN			4' SPAN			5' SPAN		
			QTY.	LENGTH	REMARKS	QTY.	LENGTH	REMARKS	QTY.	LENGTH	REMARKS
AC	#4	BNT	4	3'-8"		4	3'-8"		4	3'-8"	
AD1	#4	STR	2	15'-2"		2	15'-2"		2	15'-2"	
AD2	#5	STR	6	15'-2"		6	15'-2"		6	15'-2"	
AL1	#4	STR	10	14'-6"		12	14'-6"		14	14'-6"	
AL2	#4	STR	24	6'-9 1/2" AVG.	2'-6" TO 11'-1"	24	6'-9 1/2" AVG.	2'-6" TO 11'-1"	24	6'-9 1/2" AVG.	2'-6" TO 11'-1"
AT1	#4	STR	4	17'-2"		4	18'-2"		4	19'-2"	
AT2	#4	STR	12	10'-3 1/2" AVG.	3'-11" TO 16'-8"	12	11'-3 1/2" AVG.	4'-11" TO 17'-8"	12	12'-3 1/2" AVG.	5'-11" TO 18'-8"
CH	#4	STR	4	3'-8"		4	4'-10"		4	5'-8"	
CL1	#4	BNT	5	4'-4"		6	4'-4"		7	4'-4"	
CL2	#4	BNT	5	4'-3"		6	4'-3"		7	4'-3"	

QUANTITIES				
ITEM	UNIT	3' SPAN	4' SPAN	5' SPAN
CLASS AA CONCRETE	CY	5.50	5.80	6.20
REINFORCING STEEL	LB	970.00	1010.00	1050.00

NOTE: QUANTITIES ABOVE ARE FOR ONE END SECTION, WHICH IS COMPRISED OF ONE HEADWALL, ONE APRON, AND TWO WINGWALLS. INCLUDED IN REINFORCING STEEL PAY ITEM QUANTITY IS THE WEIGHT OF ADDITIONAL RCB BARREL REINFORCING STEEL REQUIRED AS SHOWN.

APPROVED BY BRIDGE ENGINEER *Debra J. Nisch* DATE 4/09/09

OKLAHOMA DEPT. OF TRANSPORTATION
BRIDGE STANDARD (ENGLISH)
RCB CULVERTS - END SECTION DETAILS
SINGLE CELL - 2'-0" HEIGHT - 0°
SHEET NO. 1 OF 2

1999 SPECIFICATIONS	RCB-E1-H2-0-1	OOE
---------------------	---------------	-----