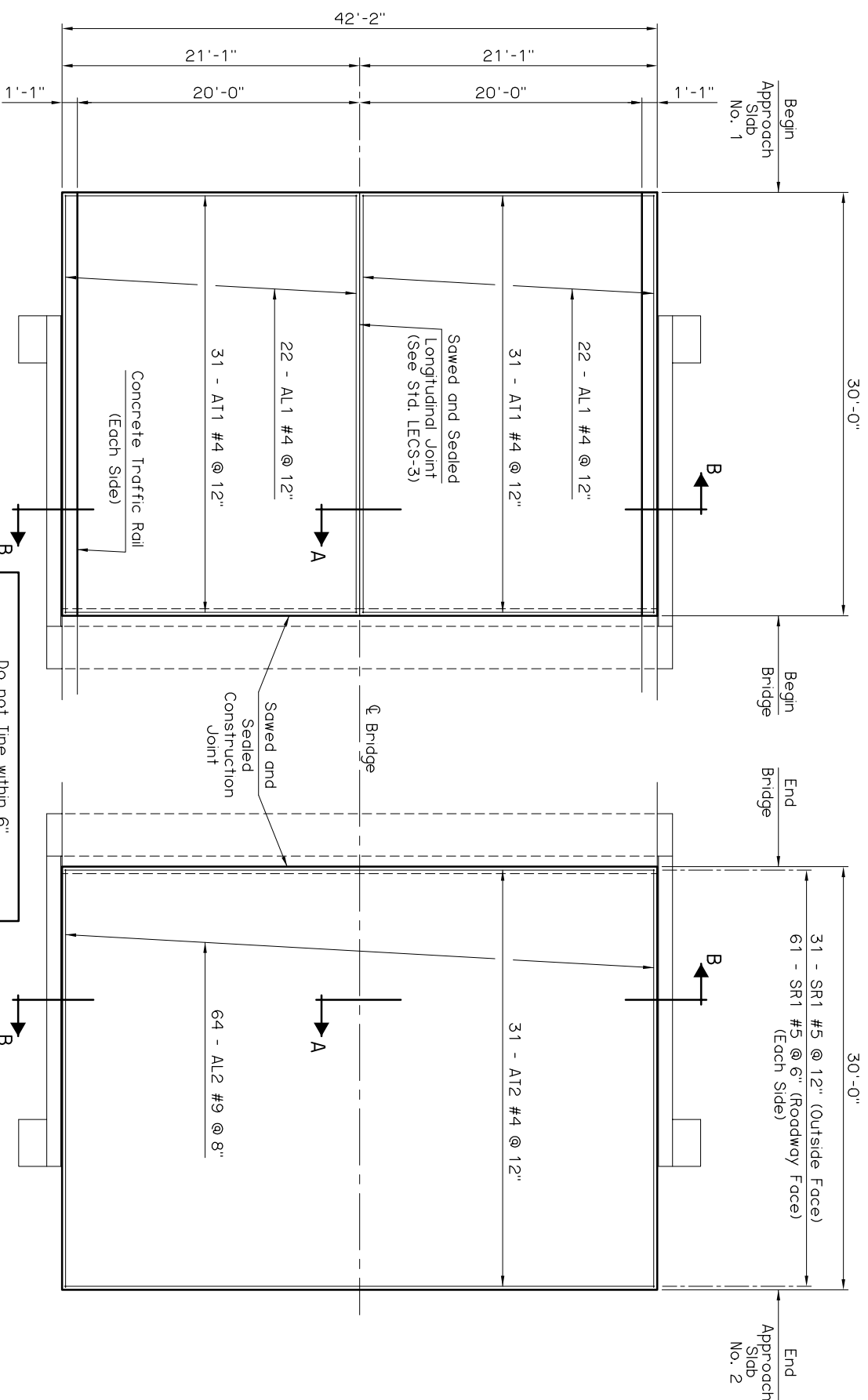


APPROACH SLAB QUANTITIES			
ITEM	UNIT	APPROACH SLAB NO. 1	APPROACH SLAB NO. 2
APPROACH SLAB	S.Y.	140.6	140.6
CONCRETE RAIL (TR4)	L.F.	60.0	60.0
WATER REPELLENT (VISUALLY INSPECTED)	S.Y.	28	28

① The contract unit price for APPROACH SLAB shall be full compensation for Concrete, Reinforcing Steel (including SR1 bars), Backer Rod, Rapid Cure Joint Sealer, Polystyrene, labor, equipment and other incidentals necessary to complete the work as specified on the plans. There is an estimated 50.8 C.Y. of Class AA Concrete and an estimated 9880 LB. of Epoxy Coated Reinforcing Steel in each Approach Slab.

APPROACH SLAB BAR LIST (ONE SHOWN, TWO REQUIRED)			
MARK	SIZE	NO.	FORM LENGTH
EPOXY COATED REINFORCING			
AT1	#4	62	STR. 20'-9"
AT2	#4	31	STR. 41'-10"
AL1	#4	44	STR. 29'-10"
AL2	#9	64	STR. 29'-10"
SR1	#5	184	BNT. 4'-1"

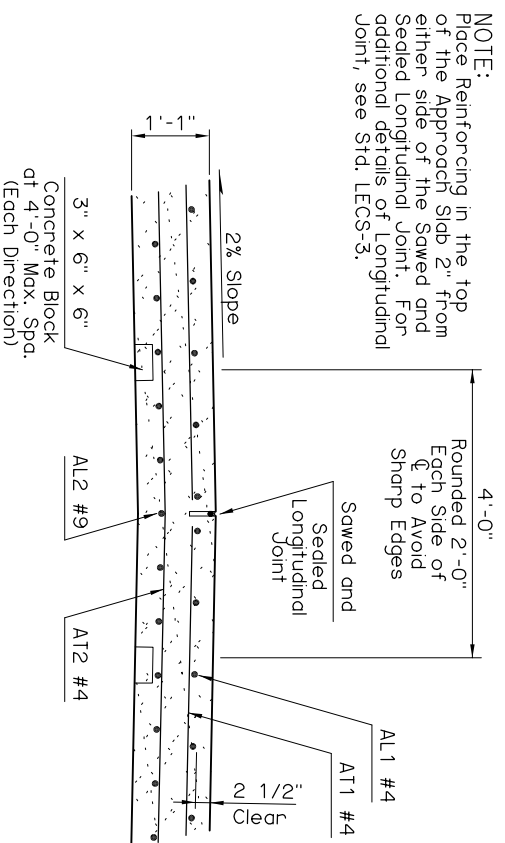
NOTE:
For SR1 bar bend, see Std. TR4-1.



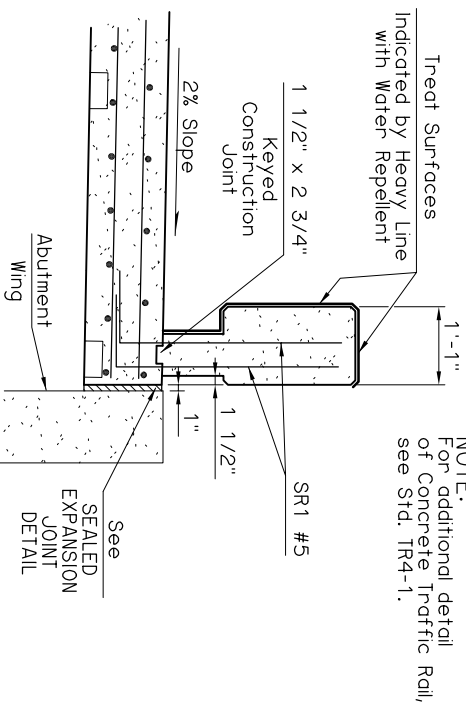
NOTE:
For additional detail of Approach Slab at Abutment, see LONGITUDINAL SECTION and DIAPHRAGM DETAILS.

APPROACH SLAB NO. 1

APPROACH SLAB NO. 2

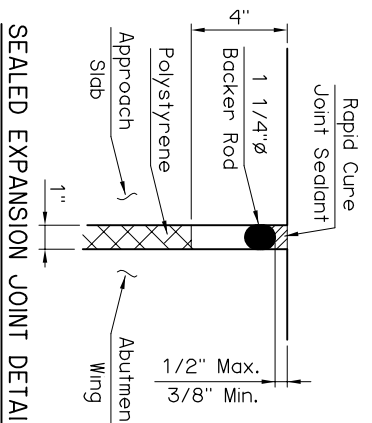


SECTION A



SECTION B

This Approach Slab Standard to be used only with Asphalt Roadway



SEALED EXPANSION JOINT DETAIL

NOTE:
Place Reinforcing in the top of the Approach Slab 2" from either side of the Sawed and Sealed Longitudinal Joint. For additional details of Longitudinal Joint, see Std. LECS-3.

APPROVED BY BRIDGE ENGINEER
Oklahoma Dept. of Transportation
BRIDGE STANDARD (ENGLISH)
DATE 10-10-05

APPROACH SLAB DETAILS
CONVENTIONAL