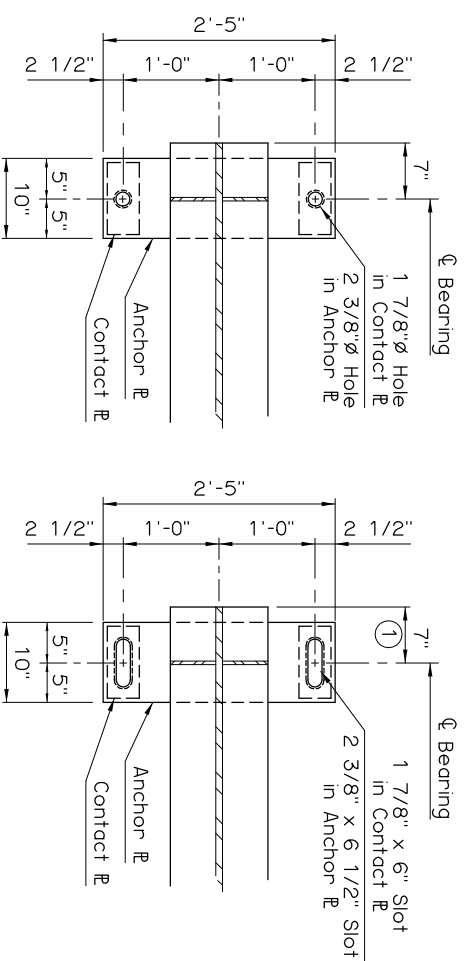


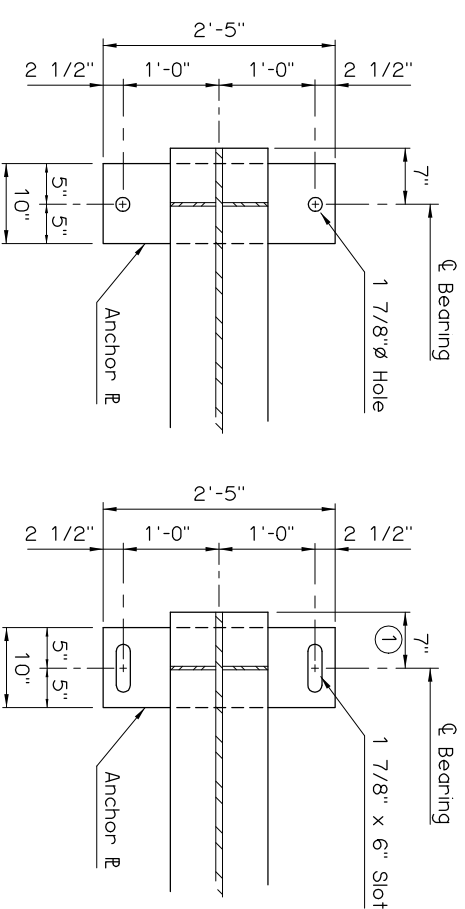
FIXED BEARING PLAN

EXPANSION BEARING PLAN



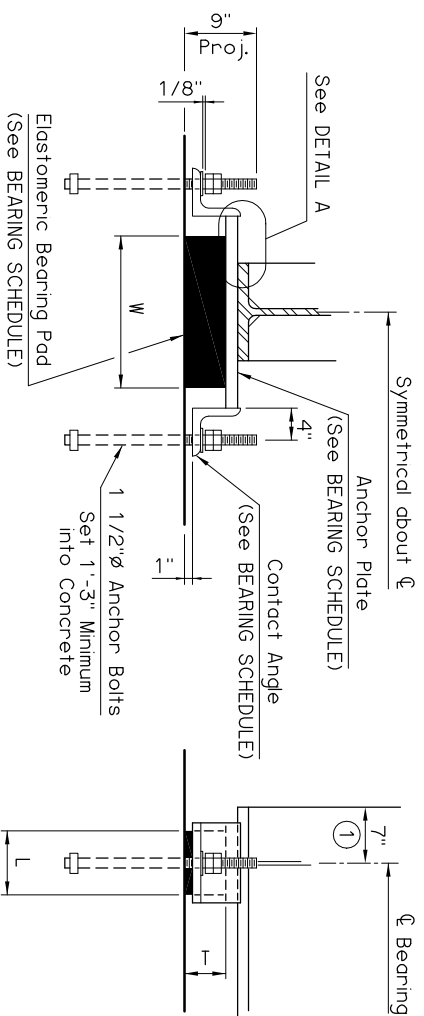
FIXED BEARING PLAN

EXPANSION BEARING PLAN



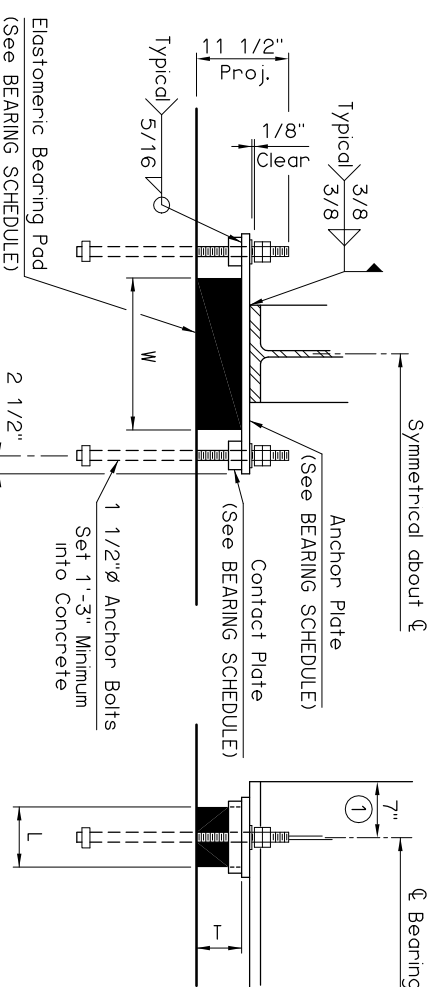
FIXED BEARING PLAN

EXPANSION BEARING PLAN



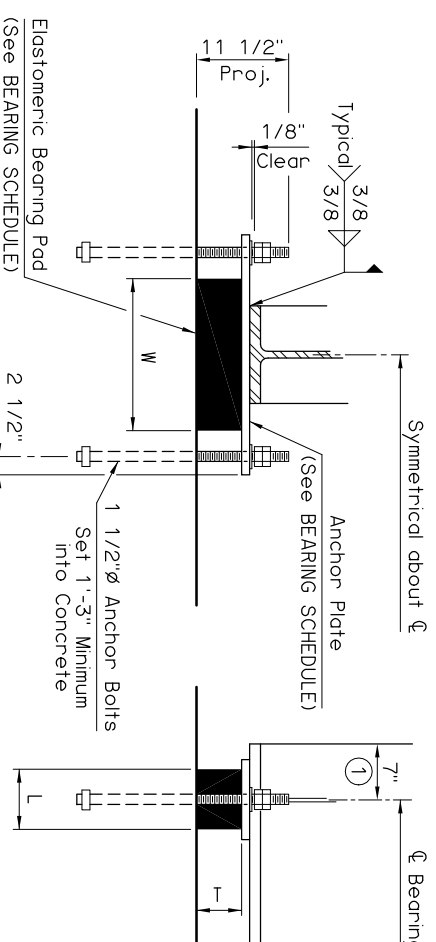
END VIEW

SIDE VIEW



END VIEW

SIDE VIEW



END VIEW

SIDE VIEW

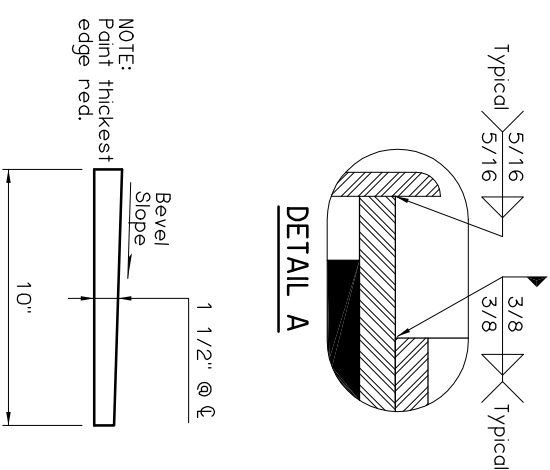
BEARING DETAILS
75' THRU 100' SPANS

BEARING DETAILS
40' THRU 70' SPANS

BEARING DETAILS
30' AND 35' SPANS

NOTE:
Structural steel for Anchor Plates, Contact Plates, Contact Angles and Anchor Bolts shall conform to AASHTO M270 (ASTM A709), Grade 50W (Weathering Steel, Charpy V-Notch testing not required). Nuts, washers and welding shall have weathering characteristics.

① Anchor Bolts shall be centered in slots during setting of beams. Dimension may vary of expansion bearing depending on temperature at the time of beam setting.



DETAIL A

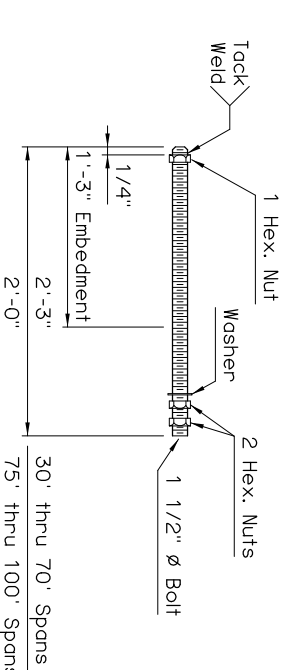
NOTE:
Point thickest edge red.

BEVELED ANCHOR PLATE DETAIL

NOTE:
Beveled Anchor Plate is required when angle between underside of girder and horizontal exceeds 1%. Bevel Slope to match angle between girder and horizontal.

SPAN	ANCHOR PLATE	CONTACT PLATE OR ANGLE	60 DUROMETER ELASTOMERIC BEARING PAD			MAXIMUM EXPANSION LENGTH WITHOUT BONDING	MAXIMUM EXPANSION LENGTH WITH BONDING ②
			SIZE (T x L x W)	COVER LAYER	INNER LAYER		
30'	1 1/2"x10"x2'-5"	---	6 5/8"x6"x1'-7"	2 - 1/4"	12 - 3/8"	13 - 1/8"	240'
35'	1 1/2"x10"x2'-5"	---	6 5/8"x6 1/2"x1'-7"	2 - 1/4"	12 - 3/8"	13 - 1/8"	240'
40'	1 1/2"x10"x2'-5"	R 3/4"x4"x9"	6 5/8"x7"x1'-7"	2 - 1/4"	12 - 3/8"	13 - 1/8"	240'
45'	1 1/2"x10"x2'-5"	R 7/8"x4"x9"	6 1/8"x7"x1'-7"	2 - 1/4"	11 - 3/8"	12 - 1/8"	240'
50'	1 1/2"x10"x2'-5"	R 1"x4"x9"	5 5/8"x7"x1'-7"	2 - 1/4"	10 - 3/8"	11 - 1/8"	220'
55'	1 1/2"x10"x2'-5"	R 1 3/8"x4"x9"	5 5/8"x7 1/2"x1'-7"	2 - 1/4"	10 - 3/8"	11 - 1/8"	220'
60'	1 1/2"x10"x2'-5"	R 1 3/4"x4"x9"	5 5/8"x7 1/2"x1'-7"	2 - 1/4"	10 - 3/8"	11 - 1/8"	220'
65'	1 1/2"x10"x2'-5"	R 1 3/4"x4"x9"	5 1/8"x7 1/2"x1'-7"	2 - 1/4"	9 - 3/8"	10 - 1/8"	200'
70'	1 1/2"x10"x2'-5"	R 1 7/8"x4"x9"	5 1/8"x7 1/2"x1'-7"	2 - 1/4"	9 - 3/8"	10 - 1/8"	200'
75'	1 1/2"x10"x1'-11"	L 6x6x1x10"	5 1/8"x8"x1'-7"	2 - 1/4"	9 - 3/8"	10 - 1/8"	200'
80'	1 1/2"x10"x1'-11"	L 6x6x1x10"	5 1/8"x8"x1'-7"	2 - 1/4"	9 - 3/8"	10 - 1/8"	200'
85'	1 1/2"x10"x1'-11"	L 6x6x1x10"	5 1/8"x8"x1'-7"	2 - 1/4"	9 - 3/8"	10 - 1/8"	200'
90'	1 1/2"x10"x1'-11"	L 6x6x1x10"	5 1/8"x8"x1'-7"	2 - 1/4"	9 - 3/8"	10 - 1/8"	200'
95'	1 1/2"x10"x1'-11"	L 6x6x1x10"	5 1/8"x8"x1'-7"	2 - 1/4"	9 - 3/8"	10 - 1/8"	200'
100'	1 1/2"x10"x1'-11"	L 6x6x1x10"	5 1/8"x8"x1'-7"	2 - 1/4"	9 - 3/8"	10 - 1/8"	200'

ANCHOR BOLT DETAIL



② Bonding to Anchor Plate shall be done in accordance with Subsection (733.06(b)) of the Standard Specifications.

APPROVED BY BRIDGE ENGINEER *Clayton Head* DATE *8/18/09*

OKLAHOMA DEPT. OF TRANSPORTATION
BRIDGE STANDARD (ENGLISH)
BEARING DETAILS
ROLLED BEAMS
CONVENTIONAL

1999 SPECIFICATIONS B40-C-BRG-RB OOE B-399E