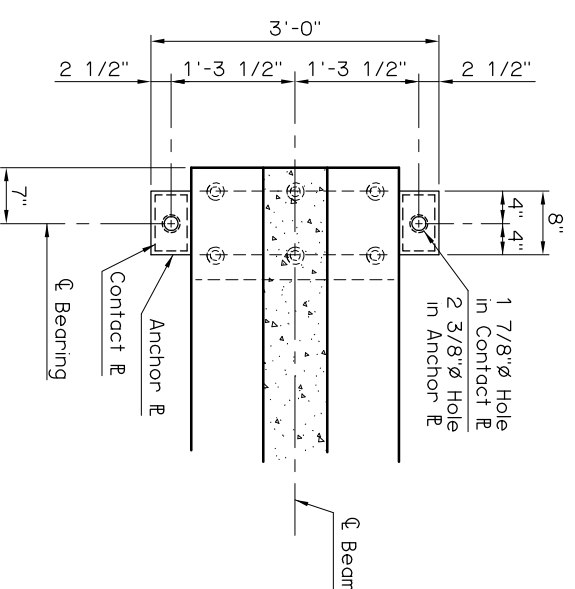
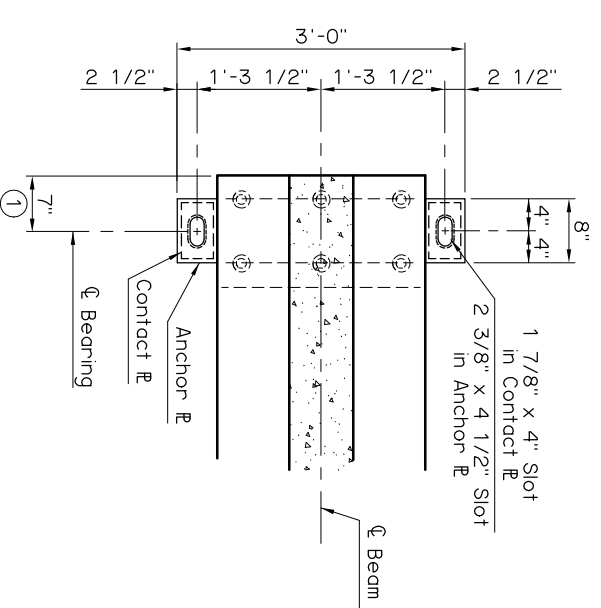


**BEVELED ANCHOR PLATE DETAIL**

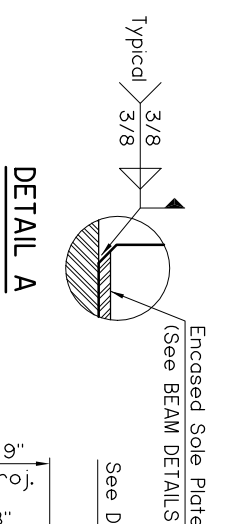
NOTE:  
Beveled Anchor Plate is required when angle between underside of girder and horizontal exceeds 1%. Bevel Slope to match angle between girder and horizontal.



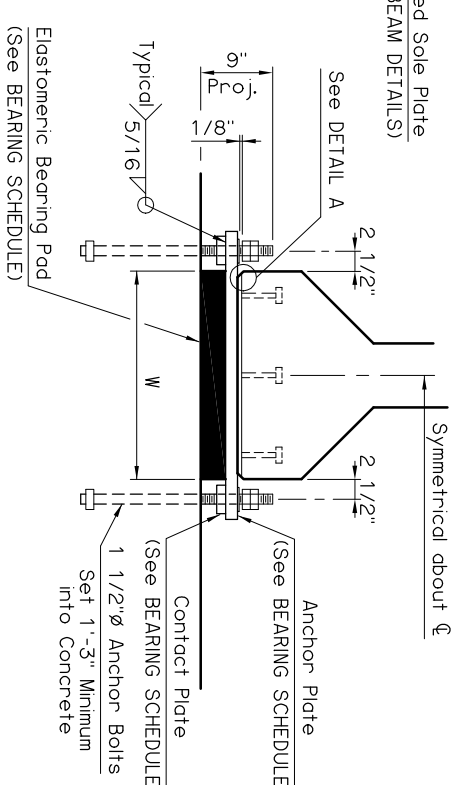
**FIXED BEARING PLAN**



**EXPANSION BEARING PLAN**

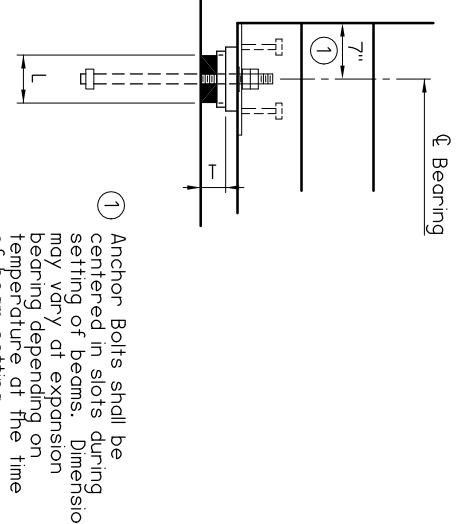


**DETAIL A**



**END VIEW**

**BEARING DETAILS**



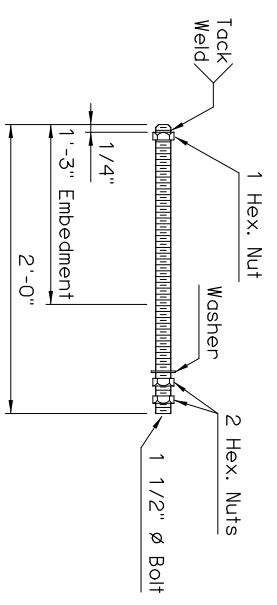
**SIDE VIEW**

**BEARING SCHEDULE**

SPAN	ANCHOR PLATE	CONTACT PLATE	60 DUROMETER ELASTOMERIC BEARING PAD			MAXIMUM EXPANSION LENGTH (2)	
			SIZE (L x W)	COVER LAYER	INNER LAYER		LAMINATE PLATE
65'	1 1/2"x8"x3'-0"	5/8"x4"x7"	3 1/8"x6"x2'-2"	2 - 1/4"	5 - 3/8"	6 - 1/8"	235'
70'	1 1/2"x8"x3'-0"	3/4"x4"x7"	3 1/8"x6"x2'-2"	2 - 1/4"	5 - 3/8"	6 - 1/8"	235'
75'	1 1/2"x8"x3'-0"	7/8"x4"x7"	3 1/8"x6"x2'-2"	2 - 1/4"	5 - 3/8"	6 - 1/8"	235'
80'	1 1/2"x8"x3'-0"	1"x4"x7"	3 1/8"x6"x2'-2"	2 - 1/4"	5 - 3/8"	6 - 1/8"	235'
85'	1 1/2"x8"x3'-0"	1 1/8"x4"x7"	3 1/8"x6 1/2"x2'-2"	2 - 1/4"	5 - 3/8"	6 - 1/8"	235'
90'	1 1/2"x8"x3'-0"	1 1/4"x4"x7"	3 1/8"x6 1/2"x2'-2"	2 - 1/4"	5 - 3/8"	6 - 1/8"	235'
95'	1 1/2"x8"x3'-0"	1 1/2"x4"x7"	3 1/8"x6 1/2"x2'-2"	2 - 1/4"	5 - 3/8"	6 - 1/8"	235'
100'	1 1/2"x8"x3'-0"	1 5/8"x4"x7"	3 1/8"x7"x2'-2"	2 - 1/4"	5 - 3/8"	6 - 1/8"	235'
105'	1 1/2"x8"x3'-0"	1 5/8"x4"x7"	3 1/8"x7"x2'-2"	2 - 1/4"	5 - 3/8"	6 - 1/8"	235'
110'	1 1/2"x8"x3'-0"	1 3/4"x4"x7"	3 1/8"x7"x2'-2"	2 - 1/4"	5 - 3/8"	6 - 1/8"	235'

(2) Bonding of Bearing Pad not required.

**ANCHOR BOLT DETAIL**



NOTE:  
Structural steel for Anchor Plates, Contact Plates and Anchor Bolts shall conform to AASHTO M270 (ASTM A709), Grade 50W (Weathering Steel, Charpy V-Notch testing not required). Nuts, washers and welding shall have weathering characteristics.

APPROVED BY BRIDGE ENGINEER *Chad Head* DATE *8/18/09*  
OKLAHOMA DEPT. OF TRANSPORTATION  
BRIDGE STANDARD (ENGLISH)  
**TYPE IV AND TYPE BT-72 P.C. BEAMS**  
BEARING DETAILS  
CONVENTIONAL  
1999 SPECIFICATIONS B40 -C-BRG-PC4BT OOE  
B-397E