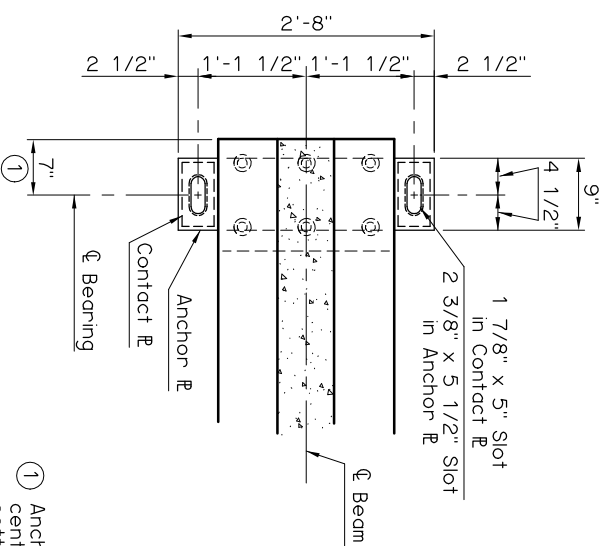
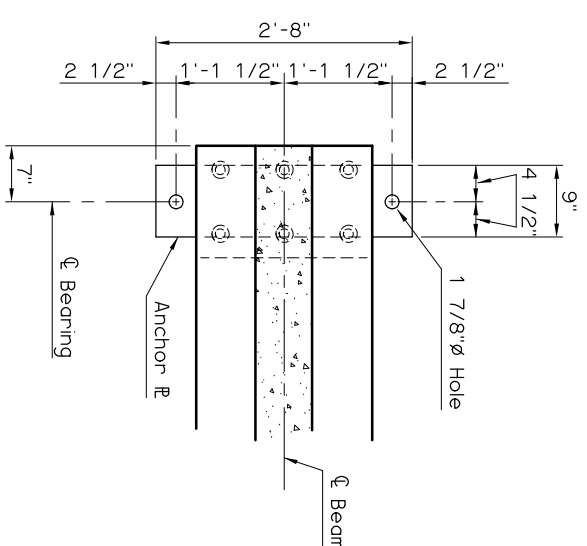


FIXED BEARING PLAN

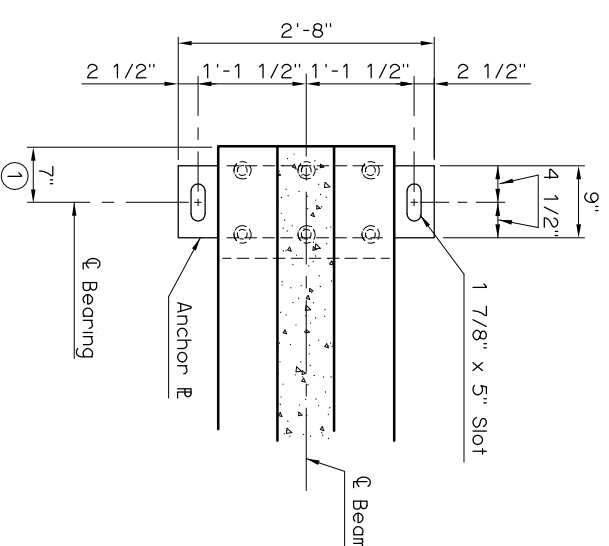


EXPANSION BEARING PLAN

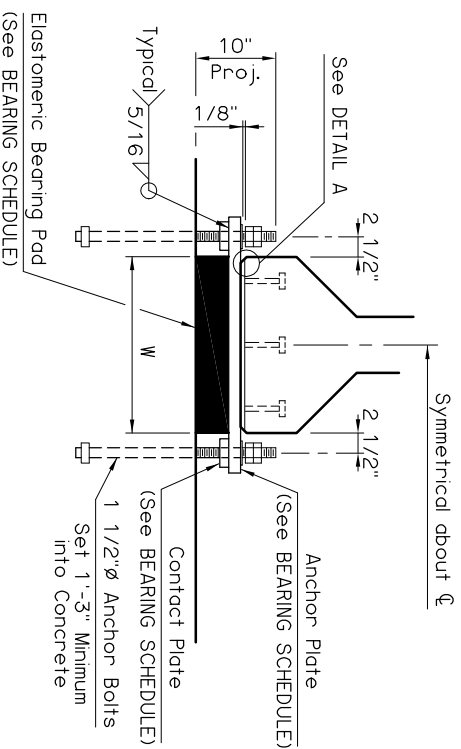
① Anchor Bolts shall be centered in slots during setting of beams. Dimension may vary at expansion bearing depending on temperature at the time of beam setting.



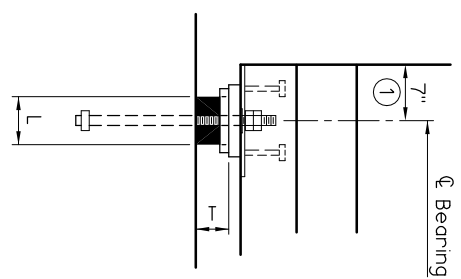
FIXED BEARING PLAN



EXPANSION BEARING PLAN



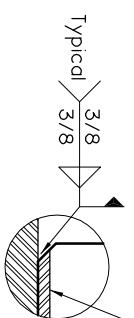
END VIEW



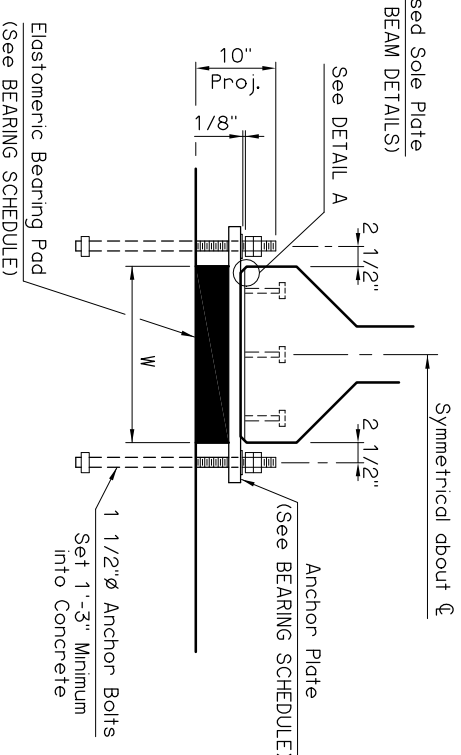
SIDE VIEW

BEARING DETAILS
50' THRU 70' SPANS

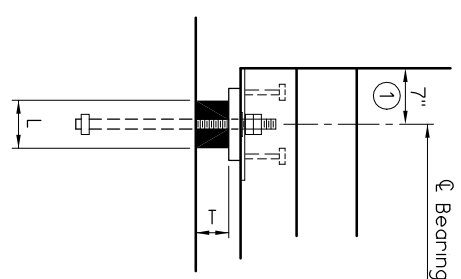
NOTE: Structural steel for Anchor Plates, Contact Plates and Anchor Bolts shall conform to AASHTO M270 (ASTM A709), Grade 50W (Weathering Steel, Charpy V-Notch testing not required). Nuts, washers and welding shall have weathering characteristics.



DETAIL A

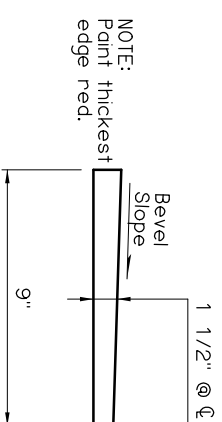


END VIEW



SIDE VIEW

BEARING DETAILS
45' SPAN



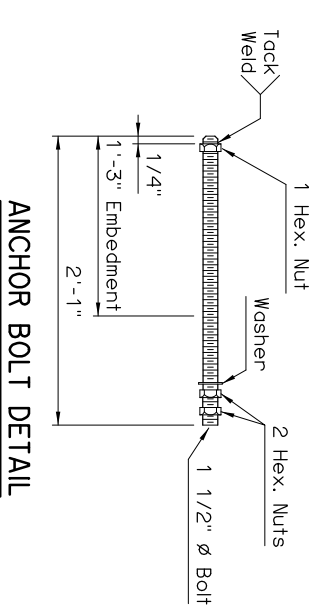
NOTE: Paint thickest edge red.

BEVELED ANCHOR PLATE DETAIL

NOTE: Beveled Anchor Plate is required when angle between underside of girder and horizontal exceeds 1%. Bevel Slope to match angle between girder and horizontal.

SPAN	ANCHOR PLATE	CONTACT PLATE	60 DUROMETER ELASTOMERIC BEARING PAD			MAXIMUM EXPANSION LENGTH WITHOUT BONDING	MAXIMUM EXPANSION LENGTH WITH BONDING
			SIZE (T x L x W)	COVER LAYER	INNER LAYER		
45'	1 1/2"x9"x2'-8"	---	4 1/8"x6"x1'-10"	2 - 1/4"	7 - 3/8"	8 - 1/8"	310'
50'	1 1/2"x9"x2'-8"	1/2"x4"x8"	4 1/8"x6"x1'-10"	2 - 1/4"	7 - 3/8"	8 - 1/8"	310'
55'	1 1/2"x9"x2'-8"	3/4"x4"x8"	4 1/8"x6 1/2"x1'-10"	2 - 1/4"	7 - 3/8"	8 - 1/8"	310'
60'	1 1/2"x9"x2'-8"	1"x4"x8"	4 1/8"x6 1/2"x1'-10"	2 - 1/4"	7 - 3/8"	8 - 1/8"	310'
65'	1 1/2"x9"x2'-8"	1 1/4"x4"x8"	4 1/8"x6 1/2"x1'-10"	2 - 1/4"	7 - 3/8"	8 - 1/8"	310'
70'	1 1/2"x9"x2'-8"	1 1/2"x4"x8"	4 1/8"x6 1/2"x1'-10"	2 - 1/4"	7 - 3/8"	8 - 1/8"	310'

② Bonding to Anchor Plate shall be done in accordance with Subsection 733.06(b) of the Standard Specifications.



ANCHOR BOLT DETAIL