

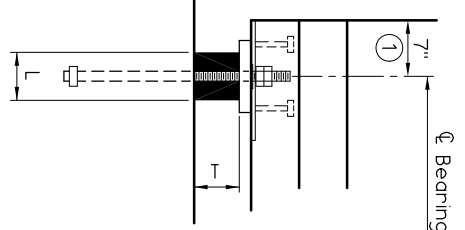
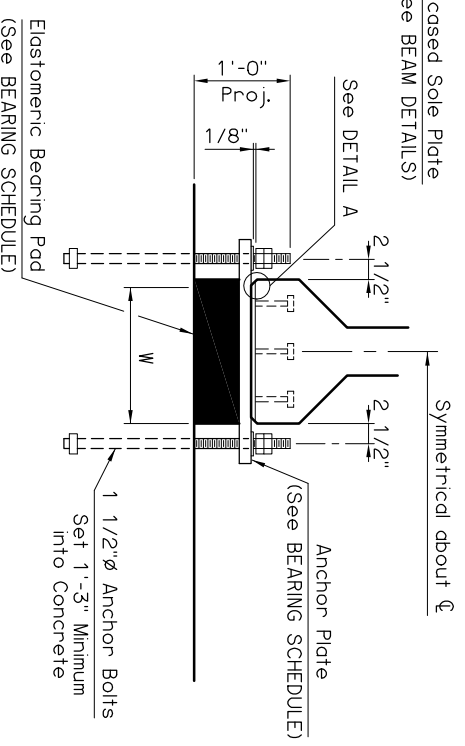
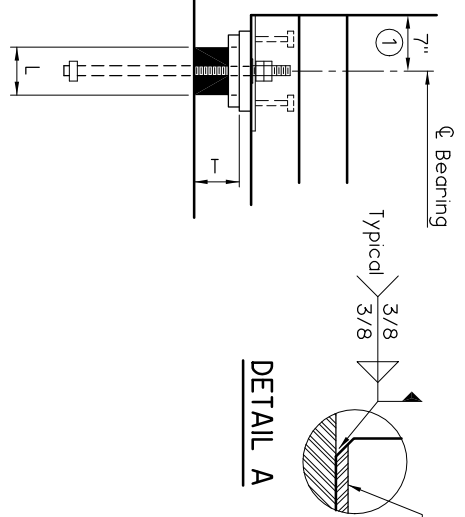
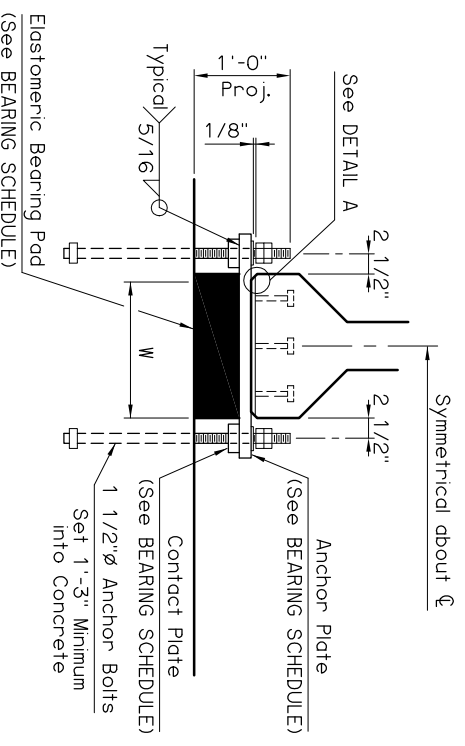
FIXED BEARING PLAN

EXPANSION BEARING PLAN

FIXED BEARING PLAN

EXPANSION BEARING PLAN

① Anchor Bolts shall be centered in slots during setting of beams. Dimension may vary if expansion bearing depending on temperature at the time of beam setting.



END VIEW

SIDE VIEW

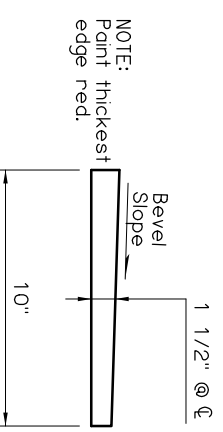
END VIEW

SIDE VIEW

BEARING DETAILS
40' THRU 50' SPANS

BEARING DETAILS
30' AND 35' SPANS

NOTE: Structural steel for Anchor Plates, Contact Plates and Anchor Bolts shall conform to AASHTO M270 (ASTM A709), Grade 50W (Weathering Steel, Charpy V-Notch testing not required). Nuts, washers and welding shall have weathering characteristics.

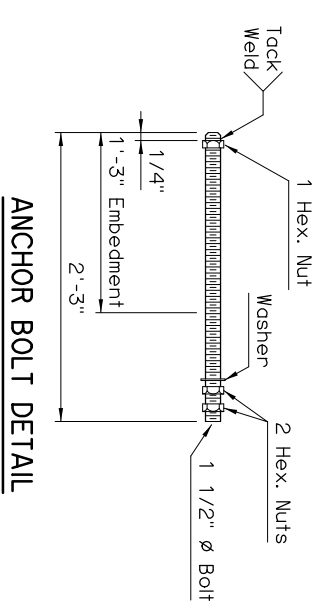


BEVELED ANCHOR PLATE DETAIL

NOTE: Beveled Anchor Plate is required when angle between underside of girder and horizontal exceeds 1%. Bevel Slope to match angle between girder and horizontal.

SPAN	ANCHOR PLATE	CONTACT PLATE	BEARING SCHEDULE				MAXIMUM EXPANSION LENGTH WITHOUT BONDING	MAXIMUM EXPANSION LENGTH WITH BONDING ②
			60 DUROMETER ELASTOMERIC BEARING PAD SIZE (T x L x W)	COVER LAYER	INNER LAYER	LAMINATE PLATE		
30'	1 1/2"x10"x2'-4"	---	5 5/8"x6"x1'-6"	2 - 1/4"	10 - 3/8"	11 - 1/8"	250'	420'
35'	1 1/2"x10"x2'-4"	---	5 5/8"x6 1/2"x1'-6"	2 - 1/4"	10 - 3/8"	11 - 1/8"	265'	420'
40'	1 1/2"x10"x2'-4"	1/2"x4"x9"	5 5/8"x7"x1'-6"	2 - 1/4"	10 - 3/8"	11 - 1/8"	280'	420'
45'	1 1/2"x10"x2'-4"	1"x4"x9"	5 5/8"x7"x1'-6"	2 - 1/4"	10 - 3/8"	11 - 1/8"	315'	420'
50'	1 1/2"x10"x2'-4"	1 1/2"x4"x9"	5 5/8"x7"x1'-6"	2 - 1/4"	10 - 3/8"	11 - 1/8"	350'	420'

② Bonding to Anchor Plate shall be done in accordance with Subsection 733.06(b) of the Standard Specifications.



ANCHOR BOLT DETAIL

APPROVED BY BRIDGE ENGINEER *Chad Head* DATE *8/18/09*
 OKLAHOMA DEPT. OF TRANSPORTATION
 BRIDGE STANDARD (ENGLISH)
BEARING DETAILS
TYPE II AND TYPE B P.C. BEAMS
CONVENTIONAL
 1999 SPECIFICATIONS B40-C-BRG-PC2
 OOE B-395E