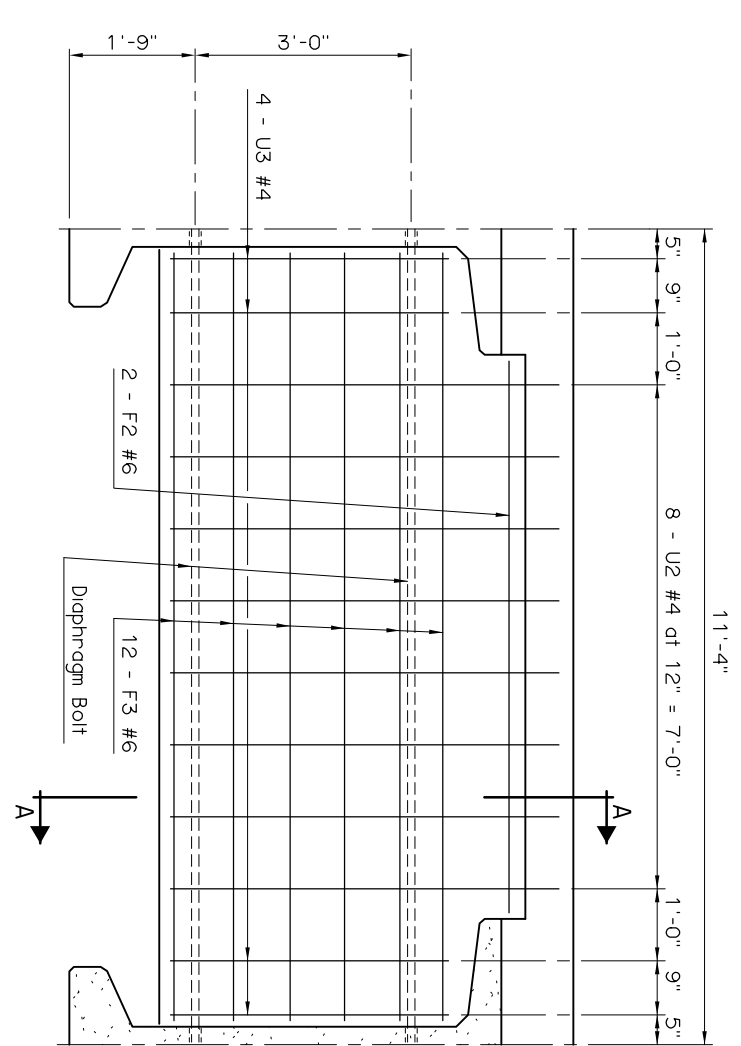
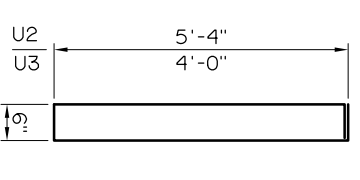


SECTION A-A



END DIAPHRAGM

| DIAPHRAGM BAR LIST | | | | |
|--------------------------|------|-----|------|--------|
| ONE SPAN SHOWN | | | | |
| MARK | SIZE | NO. | FORM | LENGTH |
| EPOXY COATED REINFORCING | | | | |
| U2 | #4 | 48 | BNT. | 12'-2" |
| U3 | #4 | 24 | BNT. | 9'-6" |
| F2 | #6 | 12 | STR. | 7'-6" |
| F3 | #6 | 72 | STR. | 10'-6" |



APPROVED BY BRIDGE ENGINEER *Clayton Head* DATE *8/18/03*

OKLAHOMA DEPT. OF TRANSPORTATION
BRIDGE STANDARD (ENGLISH)

END DIAPHRAGM DETAILS
TYPE BT-72 AND TYPE J P.C. BEAMS
CONVENTIONAL (SHEET 1 OF 2)

1999 SPECIFICATIONS B40-C-DIA-END-PC5-1 OOE B-373E