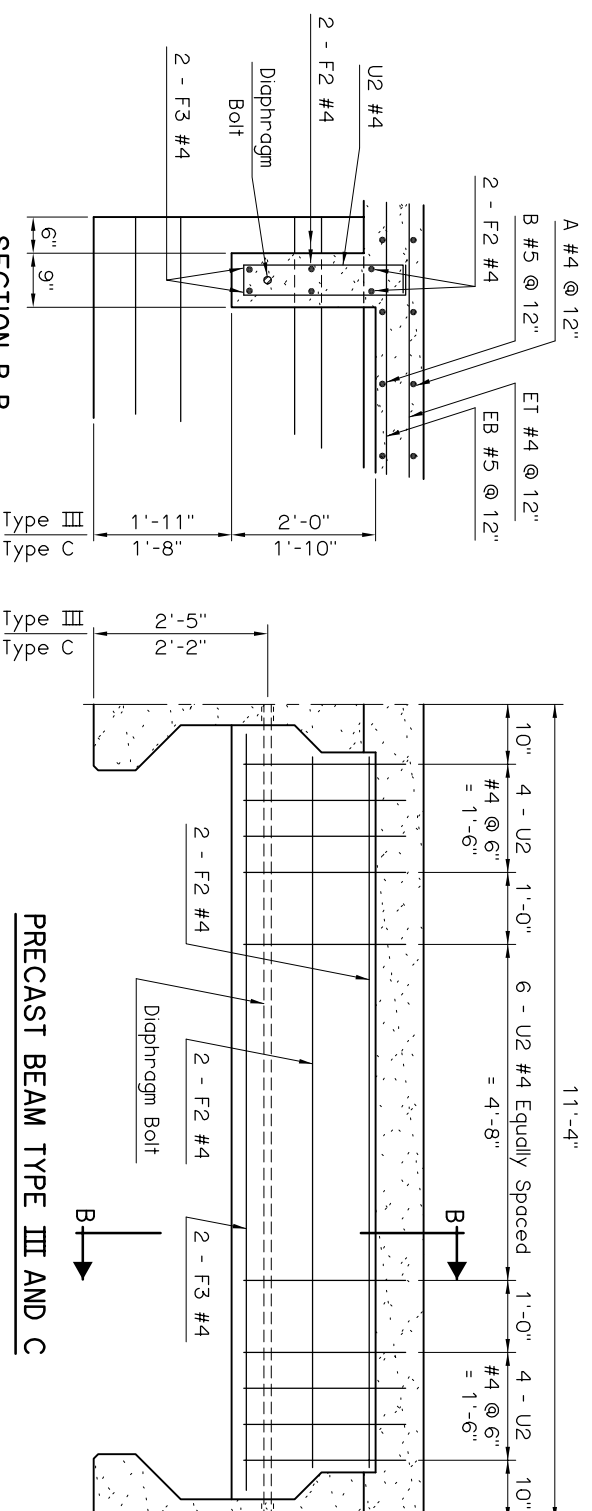


U2 #4 x 4'-11" - Type II
 U2 #4 x 4'-9" - Type B
 U2 #4 x 5'-9" - Type III
 U2 #4 x 5'-5" - Type C
 U2 #4 x 6'-3" - Type IV

SECTION A-A

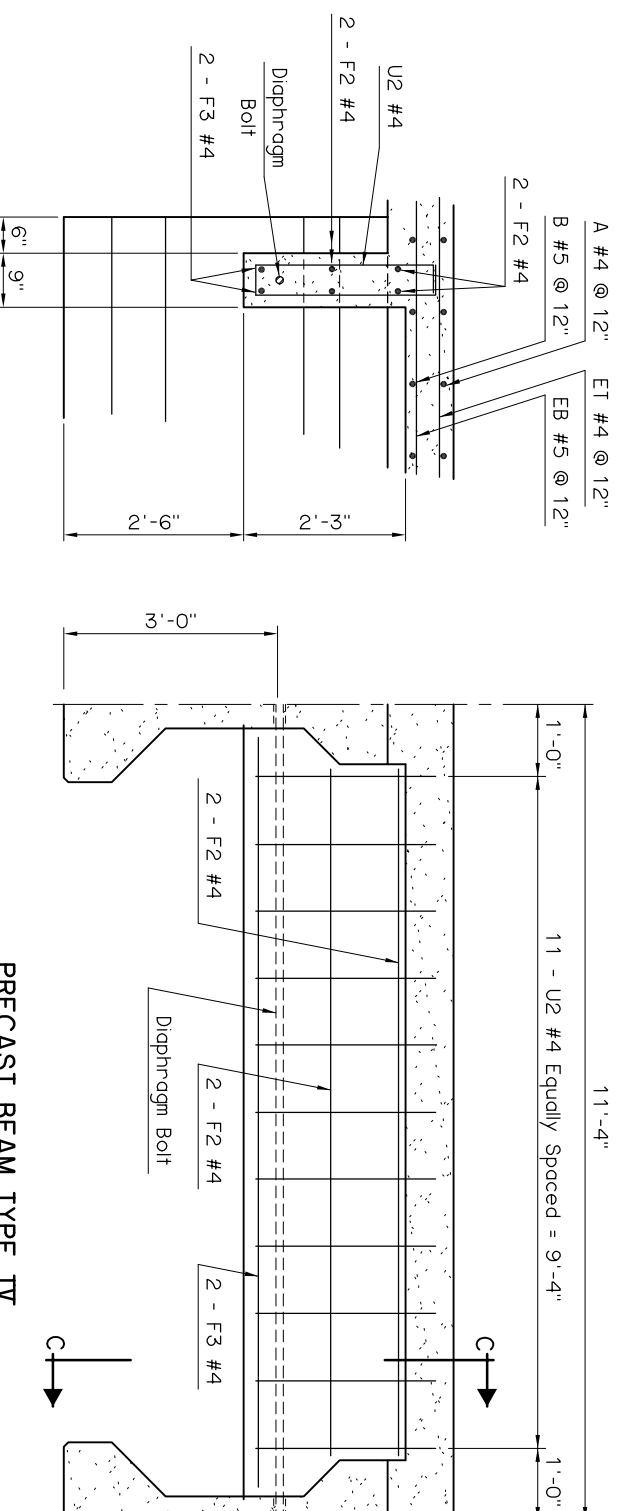
PRECAST BEAM TYPE II AND B



SECTION B-B

PRECAST BEAM TYPE III AND C

END DIAPHRAGM BAR LIST						
ONE SPAN SHOW						
P.C. BEAM	MARK	SIZE	NO.	FORM	LENGTH	
	EPOXY COATED REINFORCING					
TYPE II	U2	#4	96	BNT.	4'-11"	
	F2	#4	24	STR.	10'-2"	
	F3	#4	12	STR.	10'-6"	
TYPE B	U2	#4	96	BNT.	4'-9"	
	F2	#4	24	STR.	10'-2"	
	F3	#4	12	STR.	10'-6"	
TYPE III	U2	#4	84	BNT.	5'-9"	
	F2	#4	24	STR.	9'-8"	
	F3	#4	12	STR.	10'-5"	
TYPE C	U2	#4	84	BNT.	5'-5"	
	F2	#4	24	STR.	9'-8"	
	F3	#4	12	STR.	10'-5"	
TYPE IV	U2	#4	66	BNT.	6'-3"	
	F2	#4	24	STR.	9'-4"	
	F3	#4	12	STR.	10'-4"	



SECTION C-C

PRECAST BEAM TYPE IV

APPROVED BY BRIDGE ENGINEER

Chad H. Hester

DATE 10-10-05

OKLAHOMA DEPT. OF TRANSPORTATION
 BRIDGE STANDARD (ENGLISH)
 END DIAPHRAGM DETAILS
 TYPE II, B, III, C AND IV P.C. BEAMS
 CONVENTIONAL (SHEET 1 OF 2)

1999 SPECIFICATIONS B40-C-DIA-END-PC234-1

01E
 B-371E