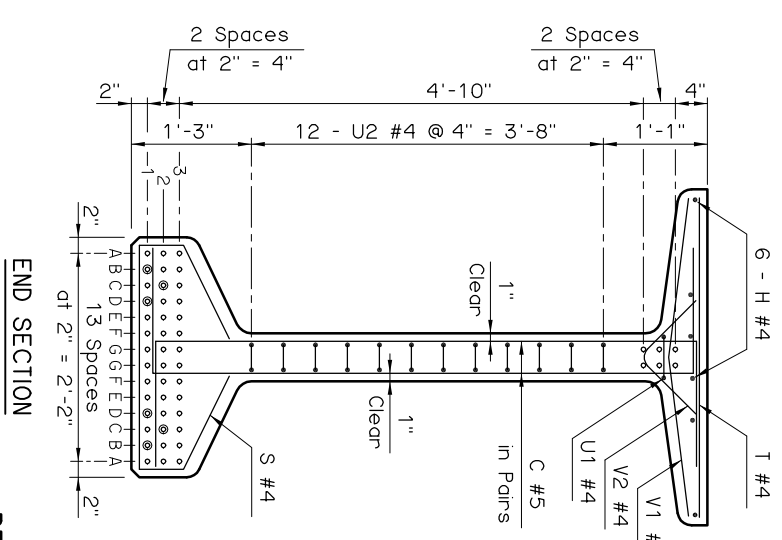


TOP VIEW

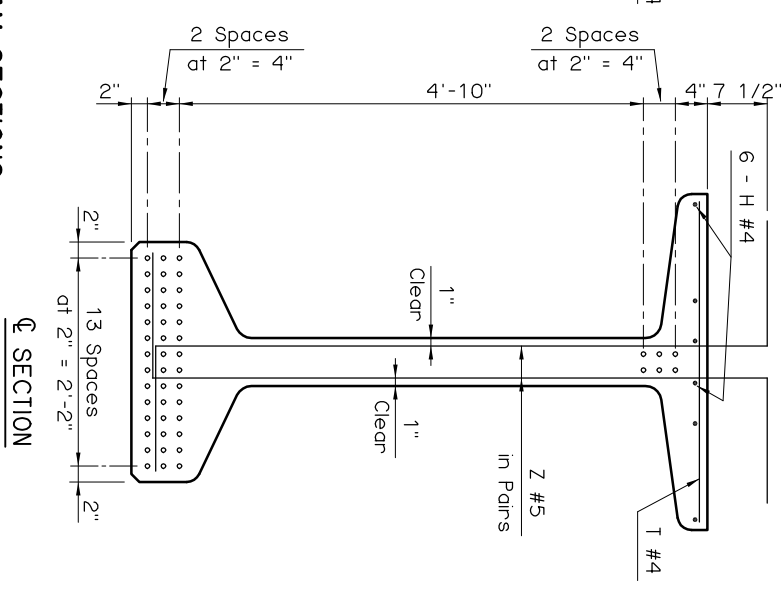
END VIEW

ENCASED BEAM PLATE DETAILS

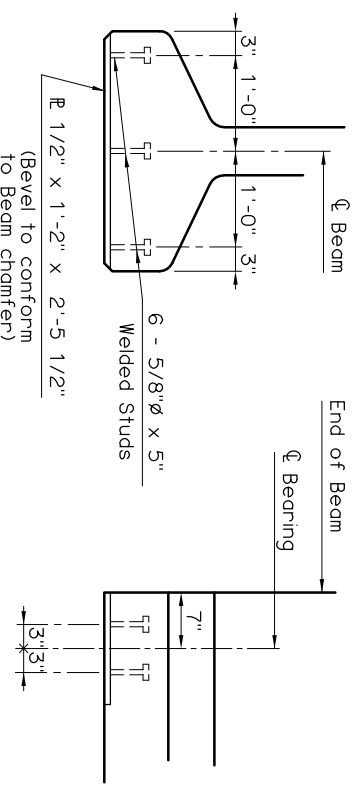
NOTE:
Encased Beam Plate located at expansion end only.



END SECTION



Q SECTION



END VIEW

ELEVATION

ENCASED SOLE PLATE DETAILS

NOTE:
Encased Sole Plate located at each end of Beam.

DEBOND SCHEDULE	
DEBOND PAIR	DEBOND LENGTH FROM END OF BEAM
B1	24'-0"
D1	12'-0"
C2	6'-0"

BEAM SECTIONS
(48 - 0.6" STRANDS)

APPROVED BY BRIDGE ENGINEER *Chad Head* DATE *8/19/09*

OKLAHOMA DEPT. OF TRANSPORTATION
BRIDGE STANDARD (ENGLISH)
TYPE J P.C. BEAM DETAILS
120' SPAN
CONVENTIONAL (SHEET 2 OF 2)

1999 SPECIFICATIONS B40-C-PCB-J-120-2 OOE B-339E