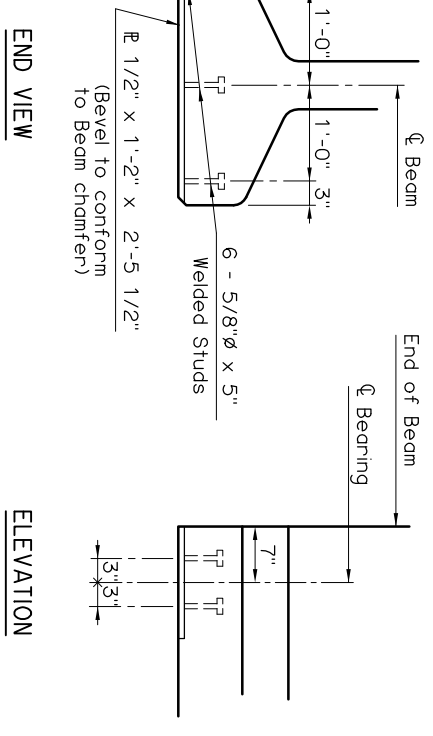
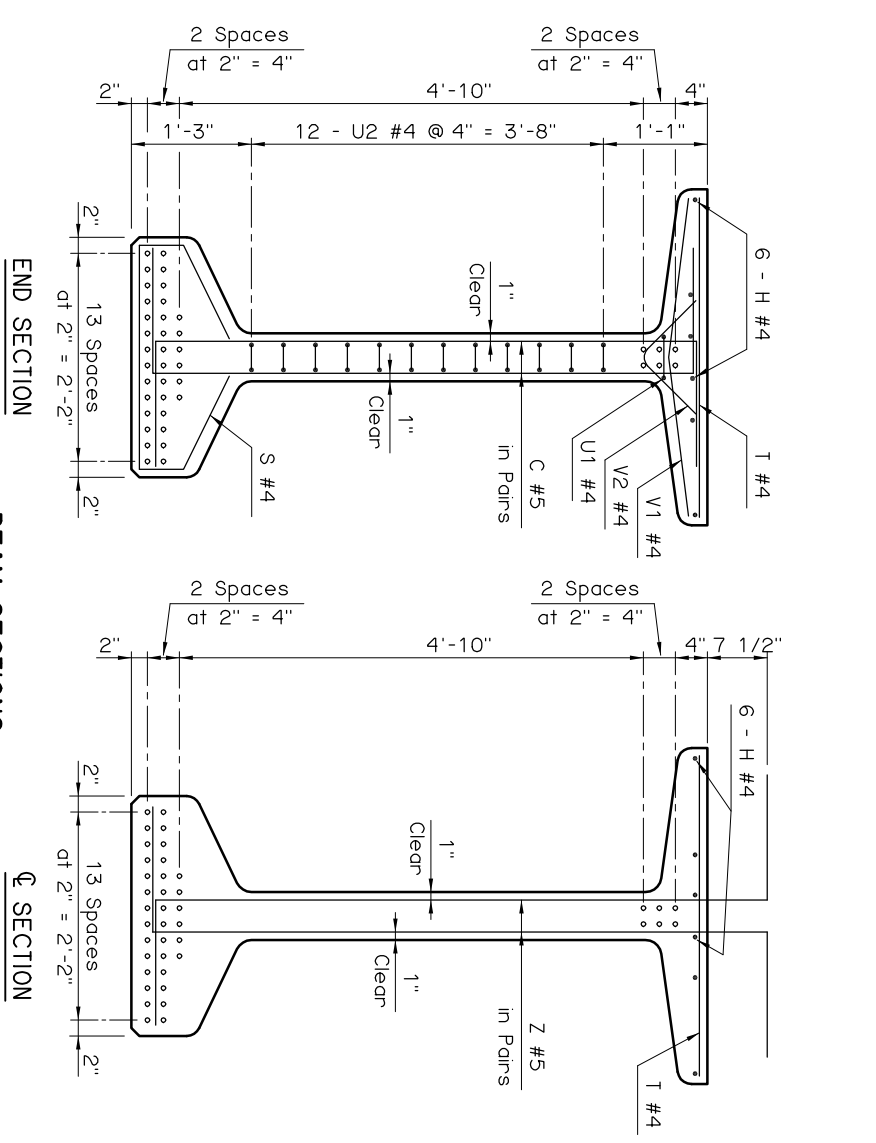


**ENCASED BEAM PLATE DETAILS**  
 NOTE:  
 Encased Beam Plate located at expansion end only.



**ENCASED SOLE PLATE DETAILS**  
 NOTE:  
 Encased Sole Plate located at each end of Beam.

**BEAM SECTIONS**  
 (40 - 0.6" Ø STRANDS)

APPROVED BY BRIDGE ENGINEER	DATE
<i>Chad Head</i>	8/16/09
OKLAHOMA DEPT. OF TRANSPORTATION	
BRIDGE STANDARD (ENGLISH)	
TYPE J P.C. BEAM DETAILS	
110' SPAN	
CONVENTIONAL (SHEET 2 OF 2)	
1999 SPECIFICATIONS	B40-C-PCB-U-110-2
OOE	B-335E