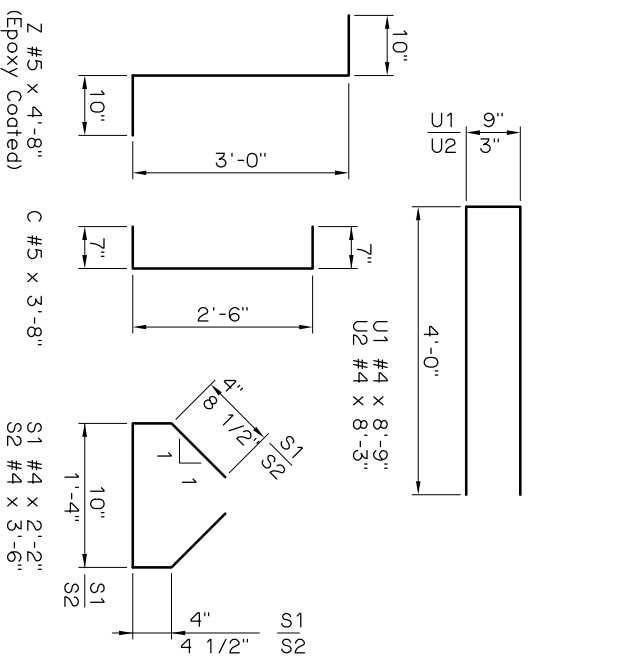
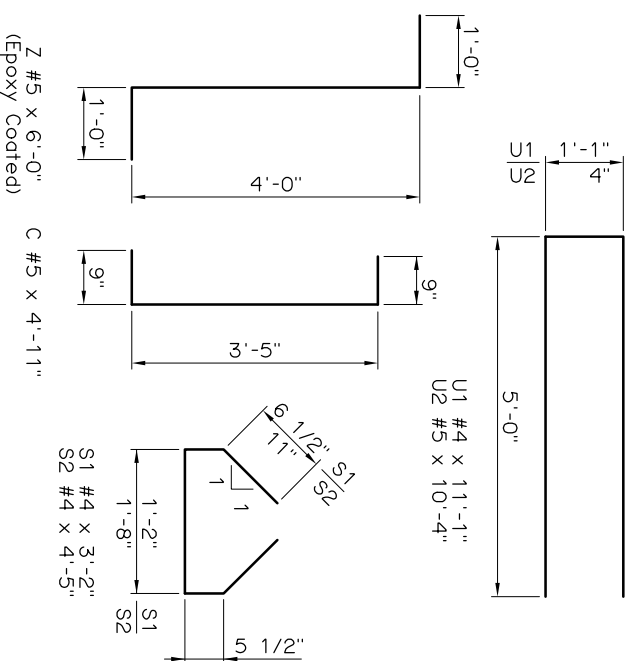


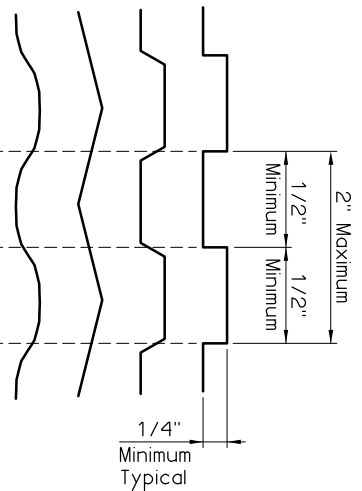
TYPE II P.C. BEAMS



TYPE B P.C. BEAMS



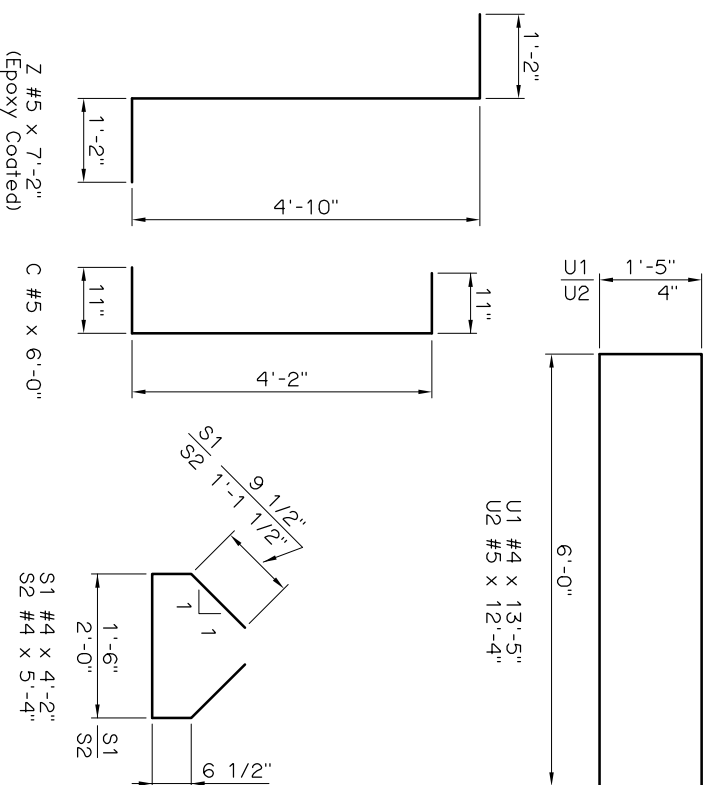
TYPE III P.C. BEAMS



INTENTIONALLY ROUGHENED SURFACE

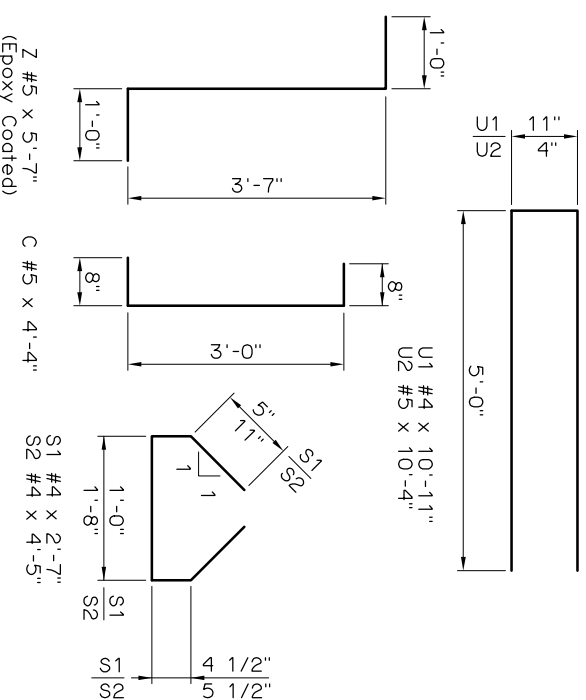
EXAMPLES

Top surface of P.C. Beams shall be intentionally roughened to a minimum height of 1/4" over a maximum pitch of 2" measured longitudinally along the length of the beam. The crest and trough associated with the height shall not be less than 1/2" and shall extend the full width of the top flange. Roughened surface may be obtained by a special trowel as shown in the examples, by cleaning the concrete surface with a stiff wire brush (or blasting) to the extent that aggregate is exposed to a height of 1/4", or by another approved method. The method used shall be submitted for approval by the Engineer. Repair any damage to reinforcement epoxy coating before placement of deck concrete.

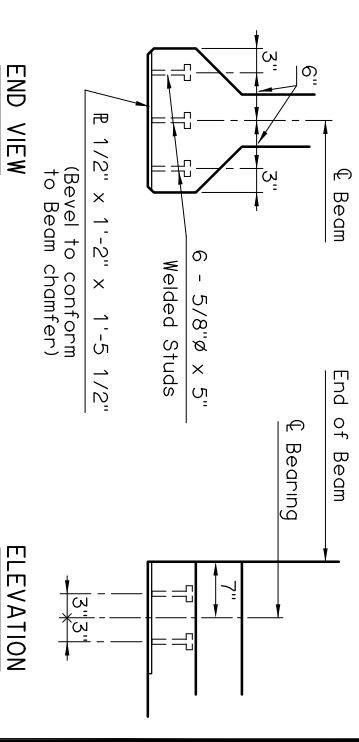


TYPE IV P.C. BEAMS

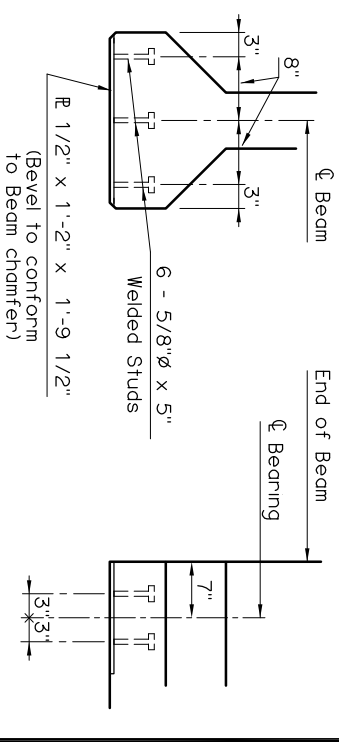
P.C. BEAM BAR BEND DETAILS



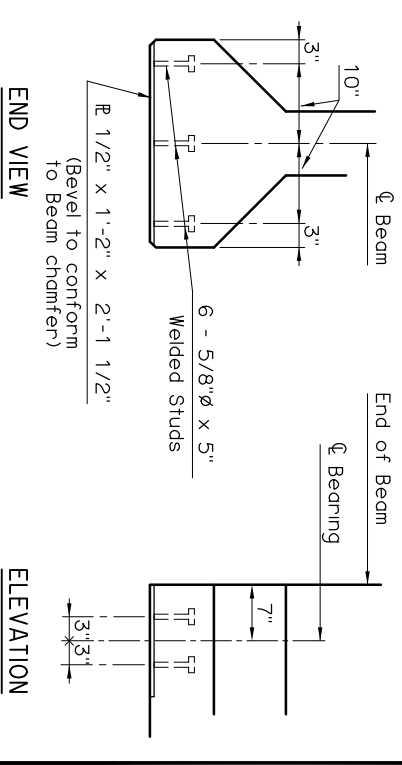
TYPE C P.C. BEAMS



TYPE II AND TYPE B P.C. BEAMS



TYPE III AND TYPE C P.C. BEAMS



TYPE IV P.C. BEAMS

ENCASED SOLE PLATE DETAILS

NOTE:
Encased Sole Plate located at each end of Beam.

APPROVED BY BRIDGE ENGINEER *Chad Head* DATE *8/18/09*

OKLAHOMA DEPT. OF TRANSPORTATION
BRIDGE STANDARD (ENGLISH)
P.C. BEAM DETAILS
TYPE II, B, III, C AND IV P.C. BEAMS
CONVENTIONAL

1999 SPECIFICATIONS B40-C-PCB-D1L OOE B-313E