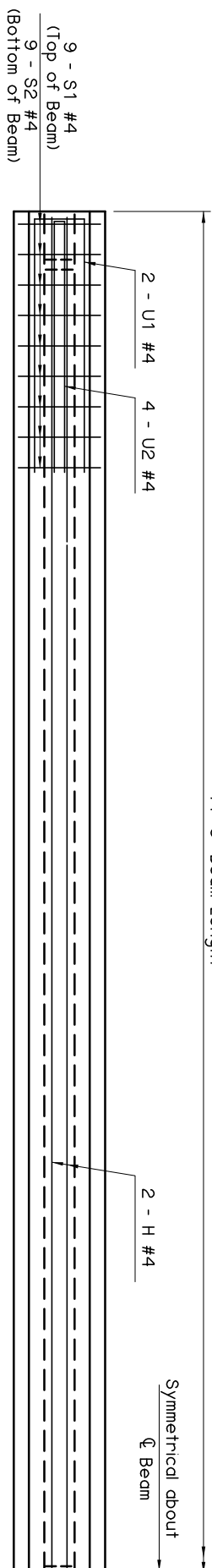


44'-8" Beam Length



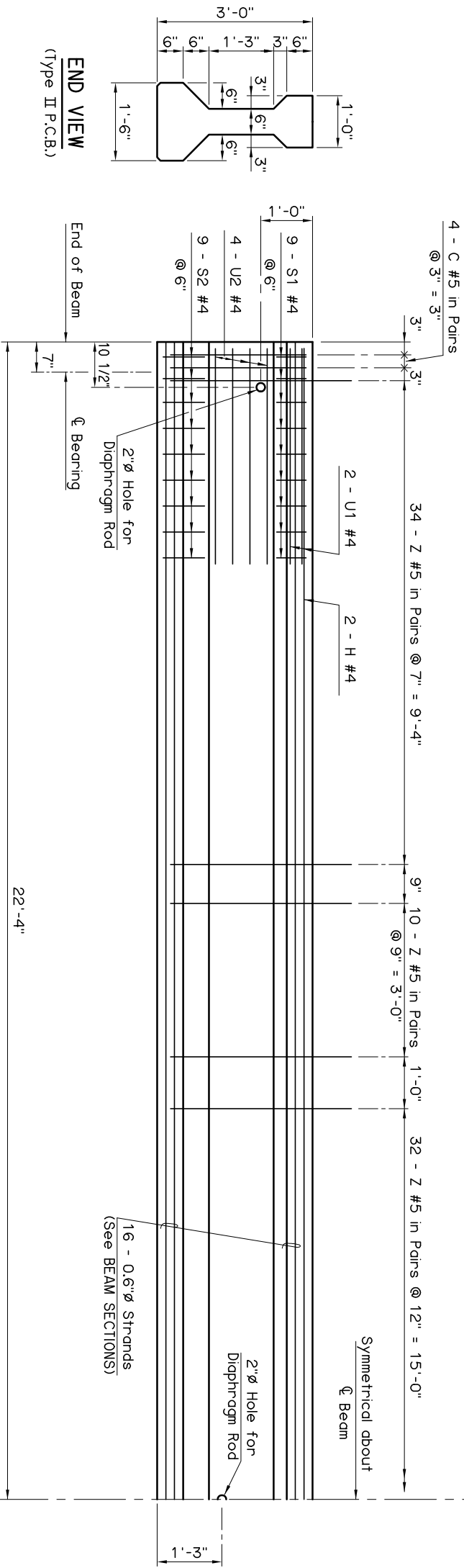
PLAN

**PRESTRESSED CONCRETE BEAM NOTES**

**COMPRESSIVE STRENGTH**  
The required compressive strength of the concrete is 5,250 P.S.I. at transfer of prestress and 7,000 P.S.I. at 28 days.

**STRAND TYPE**  
The required strand type is low-relaxation. Use strand having a nominal diameter of 0.6 with ultimate tensile strength of 270 K.S.I.

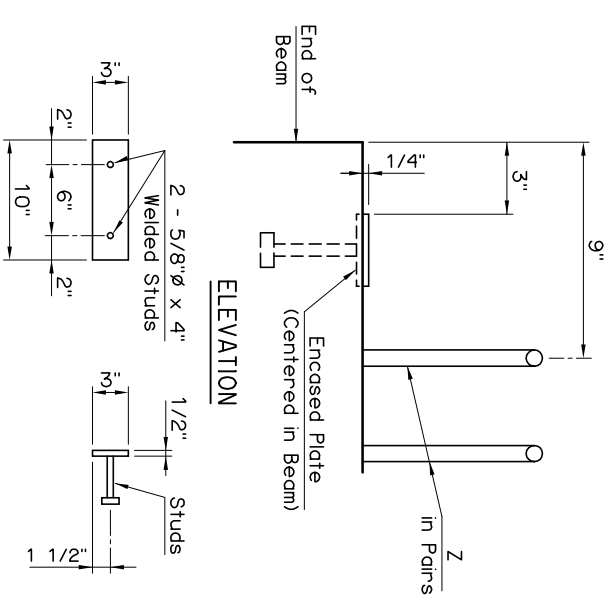
**LFD OPERATING RATING - HS 37.6**  
The Operating Rating shown is based on a nominal strength using only strands that are bonded for the full length of the beam. All partially bonded strands are neglected in strength computations.



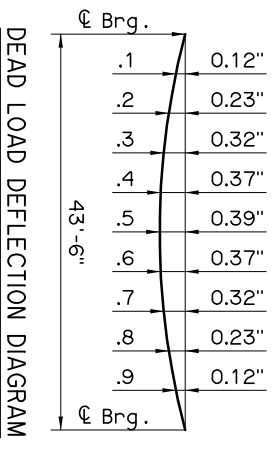
ELEVATION

**ENCASED BEAM PLATE DETAILS**

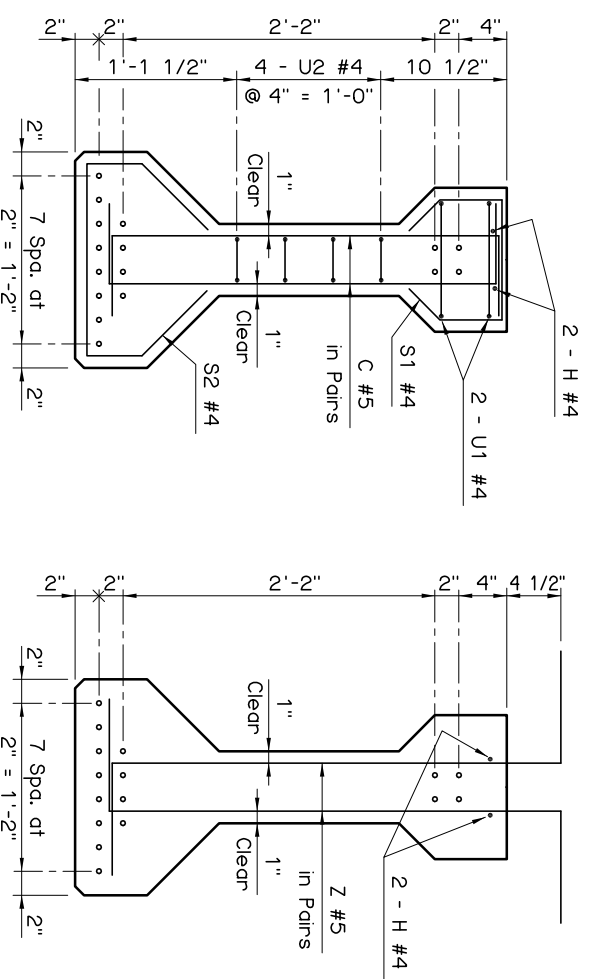
**NOTE:**  
Encased Beam Plate located at expansion end only.



Information shown on this sheet is applicable only to the standard bridge cross-section with 40' Clear Roadway, 8" Deck Slab and 4 Beams at 11'-4" spacing. Stay-In-Place Deck Forms are permitted if the conditions listed in the STAY-IN-PLACE DECK FORM NOTES on LONGITUDINAL SECTION sheet are satisfied. Any modification will require a custom design with an appropriate Dead Load Deflection Diagram.



**NOTE:**  
The Dead Load Deflection shown above at the tenth points are the initial deflections due to Deck Slab + Diphragms + 5 p.s.f. Deck Form Allowance + Concrete Traffic Rail. It does not include the Beam weight or Future Wearing Surface.



END SECTION

SECTION

**BEAM SECTIONS**  
(16 - 0.6" diameter STRANDS)

APPROVED BY BRIDGE ENGINEER *Chad Head* DATE *8/16/03*

OKLAHOMA DEPT. OF TRANSPORTATION  
BRIDGE STANDARD (ENGLISH)  
TYPE II P.C. BEAM DETAILS  
45' SPAN  
CONVENTIONAL

1999 SPECIFICATIONS B40-C-PCB-II-45 OOE B-278E