

SUPERSTRUCTURE BAR LIST

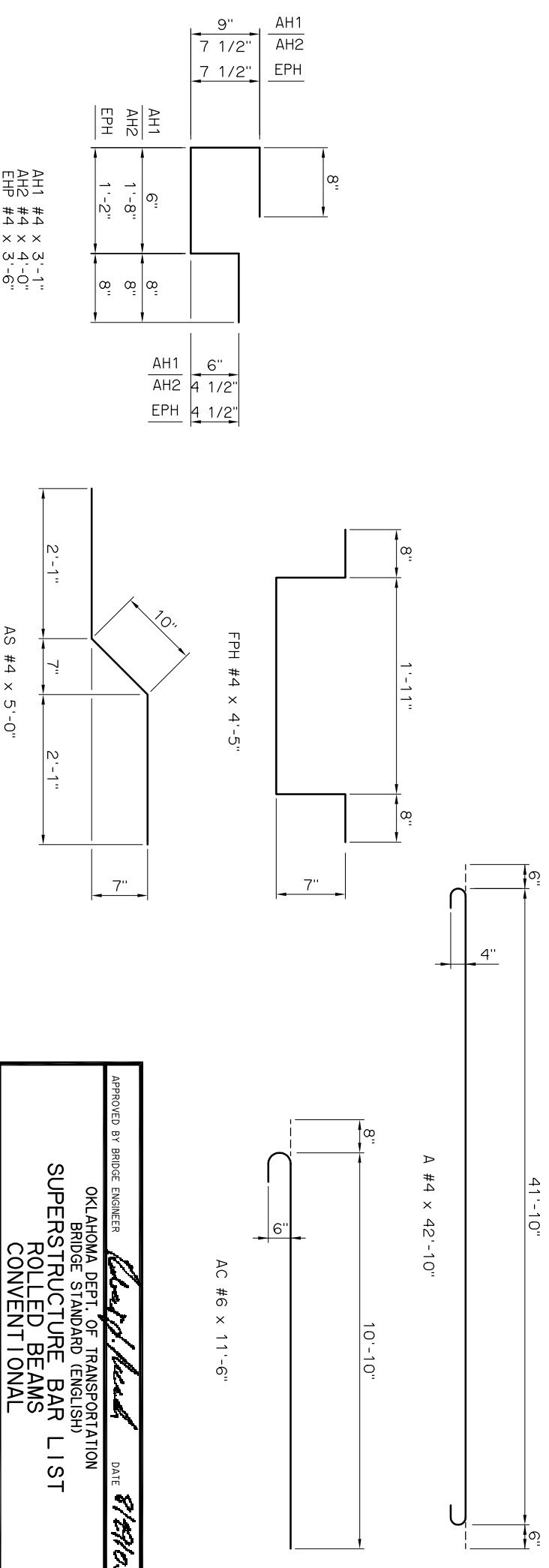
EPOXY COATED REINFORCING		ABUTMENT TO FIXED PIER		ABUTMENT TO EXPANSION PIER		FIXED PIER TO FIXED PIER		FIXED PIER TO EXPANSION PIER		EXPANSION PIER TO EXPANSION PIER		
MARK	SIZE	FORM	NUMBER	LENGTH	NUMBER	LENGTH	NUMBER	LENGTH	NUMBER	LENGTH	NUMBER	LENGTH
ET	#4	STR.	43	Span Length + 9" ①	43	Span Length + 7" ①	43	Span Length ①	43	Span Length - 2" ①	43	Span Length - 4" ①
EB	#5	STR.	43	Span Length + 9" ②	43	Span Length + 7" ②	43	Span Length ②	43	Span Length - 2" ②	43	Span Length - 4" ②
A	#4	BNT.	SL + 2 ③	42'-10"	SL + 2 ③	42'-10"	SL + 1 ③	42'-10"	SL + 1 ③	42'-10"	SL + 1 ③	Span Length - 4" ②
AC	#6	BNT.	4 * (SL + 1) ③	11'-6"	4 * (SL + 1) ③	11'-6"	4 * (SL) ③	11'-6"	4 * (SL) ③	11'-6"	4 * (SL) ③	Span Length - 4" ②
B	#5	STR.	SL + 2 ③	41'-10"	SL + 4 ③	41'-10"	SL + 1 ③	41'-10"	SL + 3 ③	41'-10"	SL + 5 ③	41'-10"
AS	#4	BNT.	43	5'-0"	43	5'-0"	-	-	-	-	-	-
AH1	#4	BNT.	10	3'-1"	10	3'-1"	-	-	-	-	-	-
AH2	#4	BNT.	36	4'-0"	36	4'-0"	-	-	-	-	-	-
AT1	#4	STR.	2	41'-10"	2	41'-10"	-	-	-	-	-	-
AT2	#4	STR.	3	10'-4"	3	10'-4"	-	-	-	-	-	-
FPH	#4	BNT.	18	4'-5"	-	-	36	4'-5"	18	4'-5"	-	-
EPH	#4	BNT.	-	-	42	3'-6"	-	-	42	3'-6"	84	3'-6"
PT1	#4	STR.	6	10'-4"	6	10'-4"	12	10'-4"	12	10'-4"	12	10'-4"
PT2	#4	STR.	-	-	4	2'-5"	-	-	4	2'-5"	8	2'-5"

① Bars shall be continuous thru Construction Joints at Fixed Piers. Combine length shown with length for adjacent spans. Add length for any laps required. Do not lap within 10' of centerline of pier. Minimum lap length is 1'-8".

② Bars shall be continuous thru Construction Joints at Fixed Piers. Combine length shown with length for adjacent spans. Add length for any laps required. Do not lap within 10' of centerline of pier. Minimum lap length is 2'-6".

③ SL = Number of feet in Span Length (SL for 30' Span = 30)

NOTE:
For Traffic Rail Bar List, see CONCRETE TRAFFIC RAIL WITH OPENINGS
or CONCRETE TRAFFIC RAIL WITHOUT OPENINGS.



APPROVED BY BRIDGE ENGINEER *Chad Head* DATE *8/19/09*

OKLAHOMA DEPT. OF TRANSPORTATION
BRIDGE STANDARD (ENGLISH)
SUPERSTRUCTURE BAR LIST
ROLLED BEAMS
CONVENTIONAL

1999 SPECIFICATIONS B40-C-SPR-BLIST-RB OOE B-271E