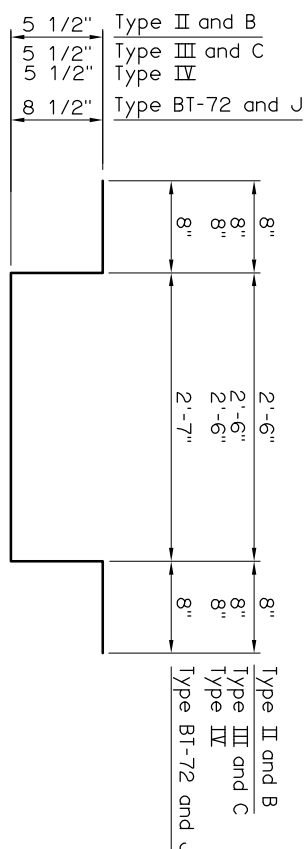


SUPERSTRUCTURE BAR LIST

EPOXY COATED REINFORCING		ABUTMENT TO FIXED PIER		ABUTMENT TO EXPANSION PIER		FIXED PIER TO FIXED PIER		FIXED PIER TO EXPANSION PIER		EXPANSION PIER TO EXPANSION PIER		
MARK	SIZE	FORM	NUMBER	LENGTH	NUMBER	LENGTH	NUMBER	LENGTH	NUMBER	LENGTH	NUMBER	LENGTH
ET	#4	STR.	43	Span Length + 9" ①	43	Span Length + 7"	43	Span Length ①	43	Span Length - 2" ①	43	Span Length - 4"
EB	#5	STR.	43	Span Length + 9" ②	43	Span Length + 7"	43	Span Length ②	43	Span Length - 2" ②	43	Span Length - 4"
A	#4	BNT.	SL + 2	42'-10"	SL + 2	42'-10"	SL + 1	42'-10"	SL + 1	42'-10"	SL + 1	42'-10"
AC	#6	BNT.	4 * (SL + 1)	12'-3"	4 * (SL + 1)	12'-3"	4 * (SL)	12'-3"	4 * (SL)	12'-3"	4 * (SL)	12'-3"
B	#5	STR.	SL + 2	41'-10"	SL + 4	41'-10"	SL + 1	41'-10"	SL + 3	41'-10"	SL + 5	41'-10"
AS	#4	BNT.	43	5'-0"	-	5'-0"	-	-	-	-	-	-
AT	#4	STR.	2	41'-10"	-	41'-10"	-	-	-	-	-	-
EPT	#4	STR.	-	-	1	41'-10"	-	-	1	41'-10"	2	41'-10"

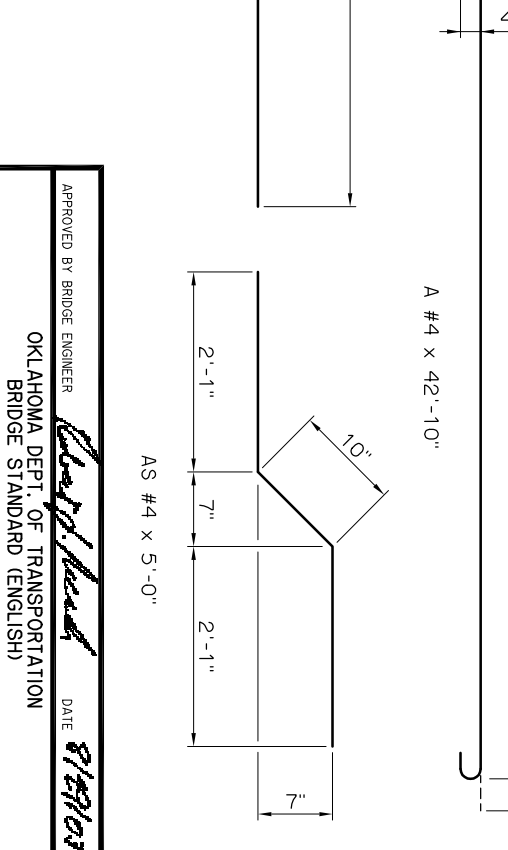
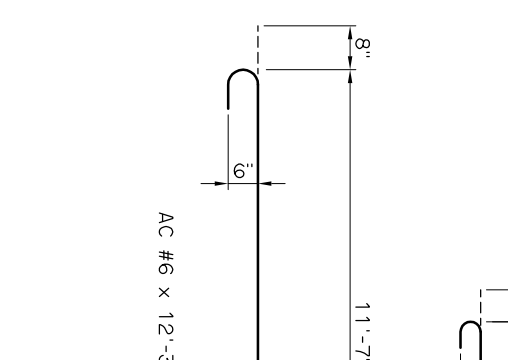
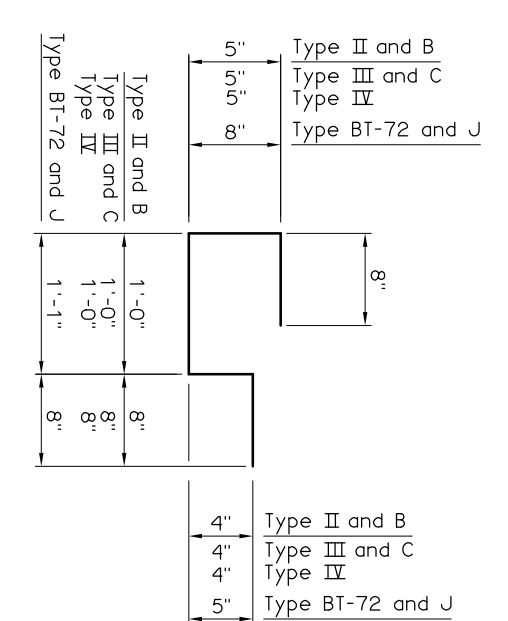
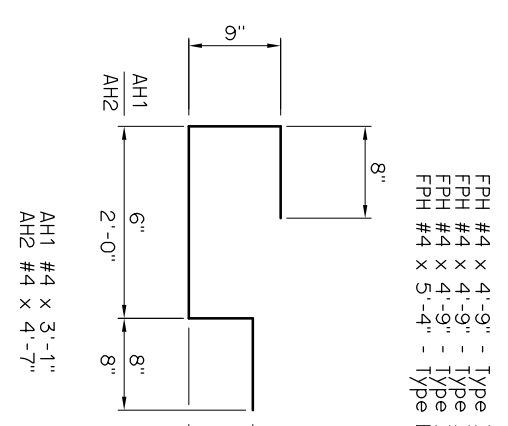
SUPERSTRUCTURE BAR LIST

EPOXY COATED REINFORCING		ABUTMENT TO FIXED PIER		ABUTMENT TO EXPANSION PIER		FIXED PIER TO FIXED PIER		FIXED PIER TO EXPANSION PIER		EXPANSION PIER TO EXPANSION PIER		
MARK	SIZE	FORM	NUMBER	LENGTH	NUMBER	LENGTH	NUMBER	LENGTH	NUMBER	LENGTH	NUMBER	LENGTH
AH1	#4	BNT.	12	3'-1"	18	3'-1"	-	-	-	-	-	-
AH2	#4	BNT.	33	4'-7"	24	4'-7"	-	-	-	-	-	-
FPT	#4	STR.	1	34'-8"	1	37'-2"	2	34'-8"	1	34'-8"	1	37'-2"
FPH	#4	BNT.	18	4'-9"	19	5'-4"	36	4'-9"	18	4'-9"	19	5'-4"
EPH	#4	BNT.	-	-	43	3'-1"	43	3'-6"	43	3'-1"	43	3'-6"



- ① Bars shall be continuous thru Construction Joints at Fixed Piers. Combine length shown with length for adjacent spans. Add length for any laps required. Do not lap within 10' of centerline of pier. Minimum lap length is 1'-8".
- ② Bars shall be continuous thru Construction Joints at Fixed Piers. Combine length shown with length for adjacent spans. Add length for any laps required. Do not lap within 10' of centerline of pier. Minimum lap length is 2'-6".
- ③ SL = Number of feet in Span Length (SL for 30' Span = 30)

NOTE:
 For Traffic Rail Bar List, see CONCRETE TRAFFIC RAIL WITH OPENINGS OR CONCRETE TRAFFIC RAIL WITHOUT OPENINGS.
 For End Diaphragm Bar List, see END DIAPHRAGM DETAILS.
 For Intermediate Diaphragm Bar List, see INTERMEDIATE DIAPHRAGM DETAILS.



APPROVED BY BRIDGE ENGINEER *Clayton Head* DATE *8/18/03*
 OKLAHOMA DEPT. OF TRANSPORTATION
 BRIDGE STANDARD (ENGLISH)
SUPERSTRUCTURE BAR LIST
 P. C. BEAMS
 CONVENTIONAL
 1999 SPECIFICATIONS B40-C-SPR-BLST-PCB OOE B-270E