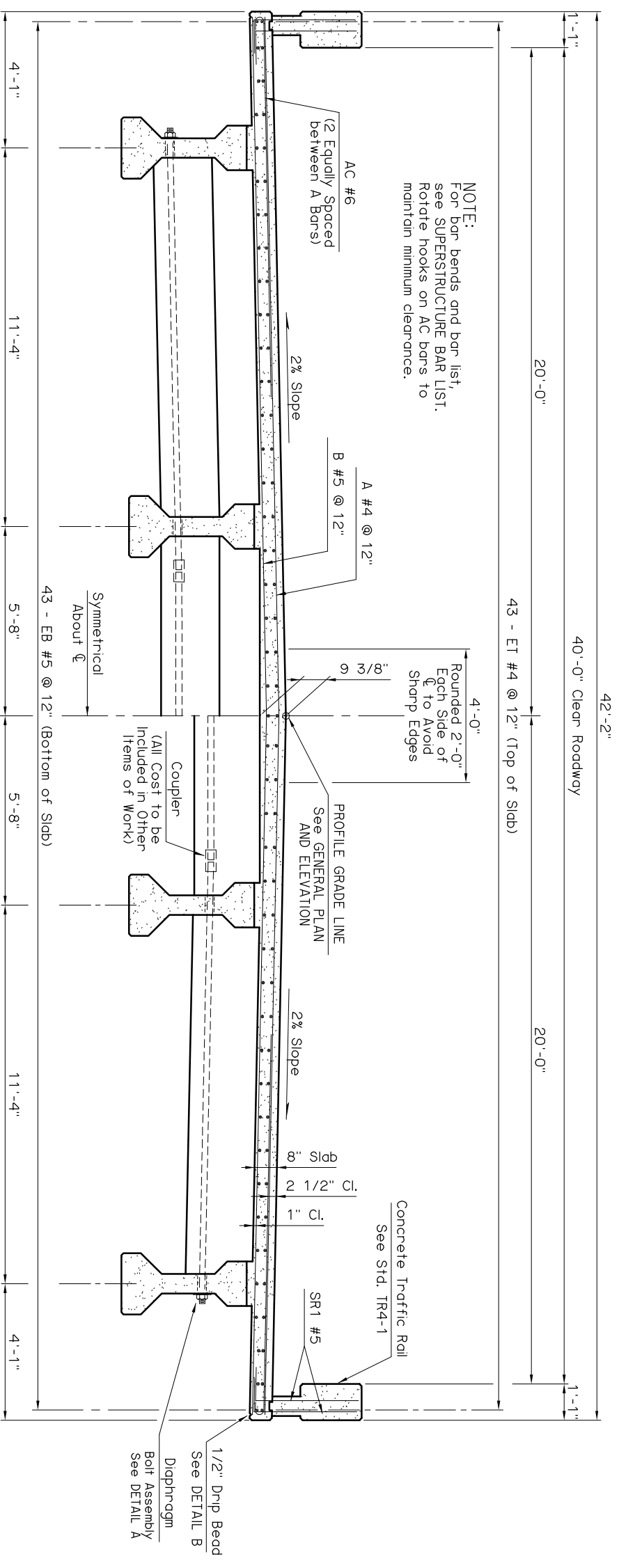


DETAIL A

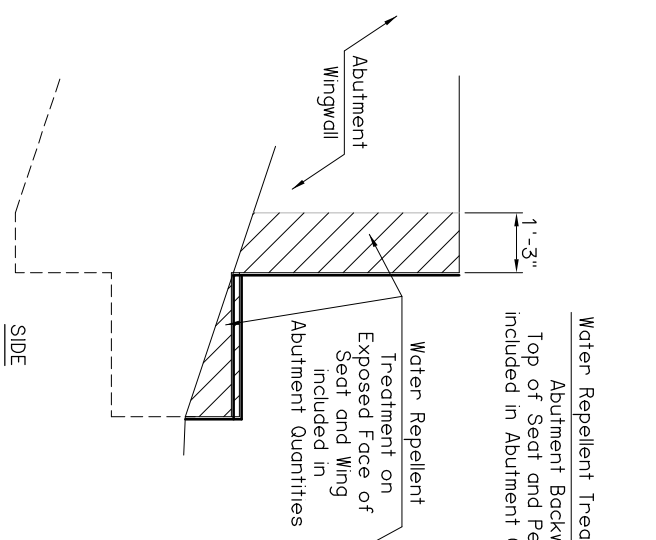
DIAPHRAGM BOLT NOTES
 Structural steel for Diaphragm Bolts and Plate Washers shall conform to AASHTO M270 (ASTM A709), Grade 50W (Weathering Steel, Charpy V-Notch testing not required). A #10 reinforcing bar conforming to AASHTO M31, Grade 60, and threaded at the ends as shown may be substituted for the Diaphragm Bolt. Hex Nuts shall conform to AASHTO M291 (ASTM A563).
 Paint exposed Diaphragm Bolt, Plate Washer and Hex Nut with two (2) coats of zinc-rich paint (6 mil minimum thickness) after assembly. All cost of Diaphragm Bolt, Plate Washer and Hex Nut to be included in contract unit price for STRUCTURAL STEEL.



HALF SECTION AT INTERMEDIATE DIAPHRAGM
TYPICAL CROSS SECTION

HALF SECTION AT END DIAPHRAGM

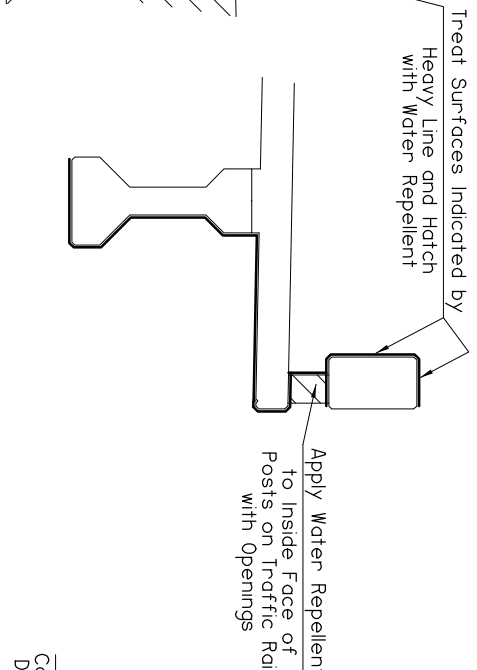
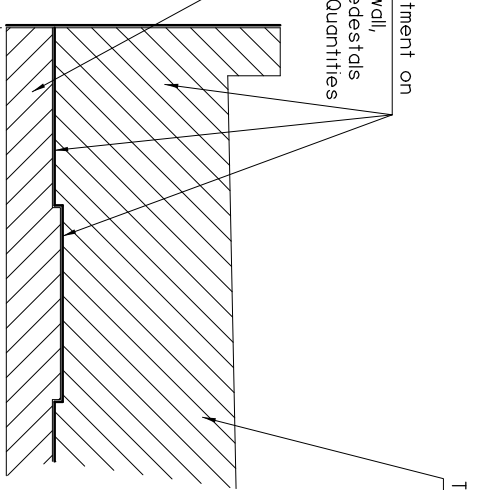
NOTE:
 For LFD Operating Rating and Dead Load Deflection Diagram, see P.C. BEAM DETAILS.



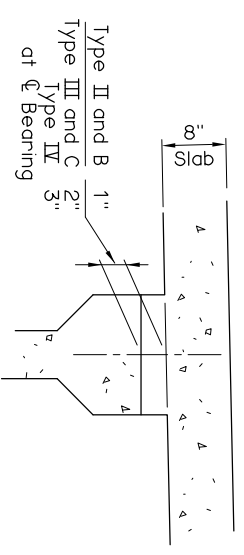
ABUTMENT

ELEVATION

TRAFFIC RAIL, SLAB AND BEAM



DETAIL B



BEAM HAUNCH DETAIL
NOTE:
 Plan quantities for CLASS AA CONCRETE include Beam Haunches. Haunch height shown is at centerline bearing only, measured from bottom of Deck Slab to top of Beam, and varies across the span. Haunch height to be determined after erection of beams to provide for dead load deflection and grade adjustment, but the pay quantity will be as shown on the plans.

APPROVED BY BRIDGE ENGINEER *Chad Head* DATE *8/18/09*
 OKLAHOMA DEPT. OF TRANSPORTATION
 BRIDGE STANDARD (ENGLISH)
TYPICAL CROSS SECTION
TYPE II, B, III, C AND IV P.C. BEAMS
 CONVENTIONAL
 1999 SPECIFICATIONS B40-C-XSECT-PC234 OOE B-261E