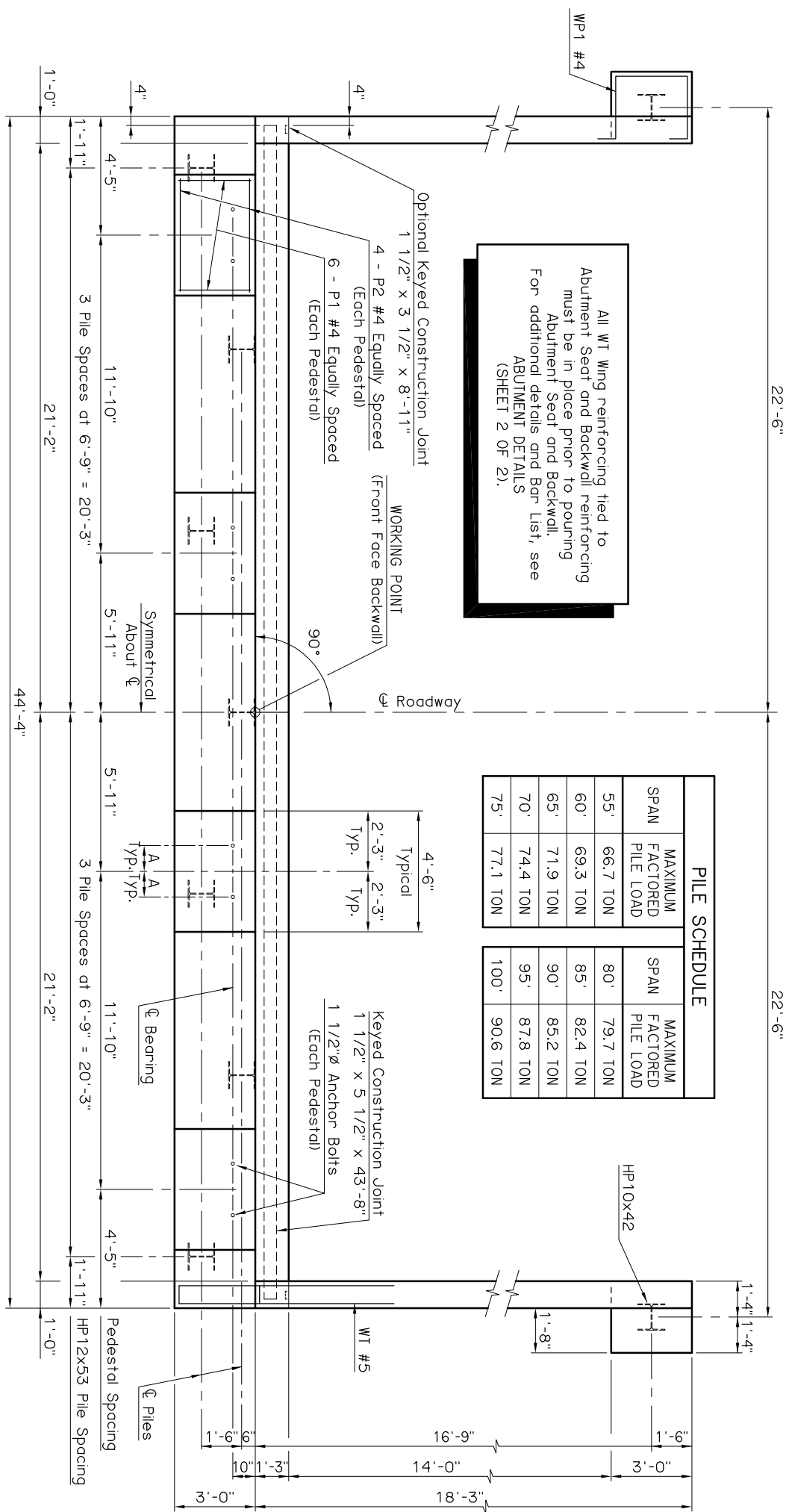


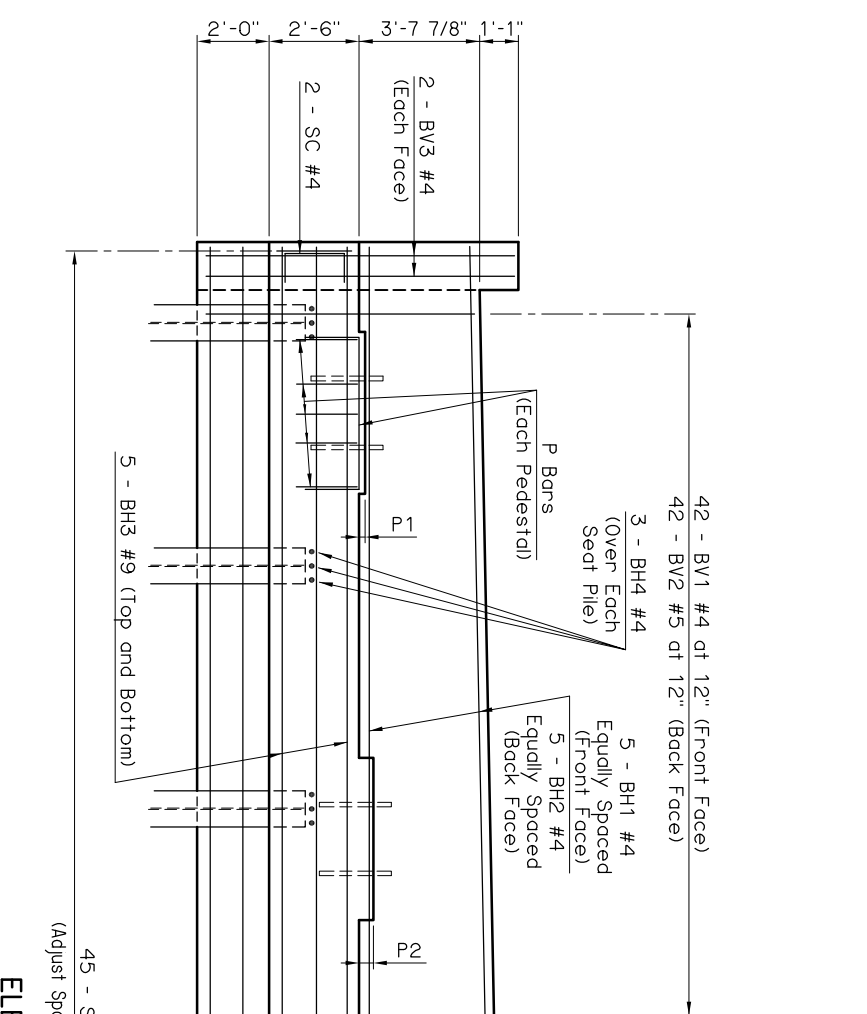
All WT Wing reinforcing tied to Abutment Seat and Backwall reinforcing must be in place prior to pouring Abutment Seat and Backwall. For additional details and Bar List, see ABUTMENT DETAILS (SHEET 2 OF 2).

PILE SCHEDULE	
SPAN	MAXIMUM FACTORED PILE LOAD
55'	66.7 TON
60'	69.3 TON
65'	71.9 TON
70'	74.4 TON
75'	77.1 TON
SPAN	MAXIMUM FACTORED PILE LOAD
80'	79.7 TON
85'	82.4 TON
90'	85.2 TON
95'	87.8 TON
100'	90.6 TON



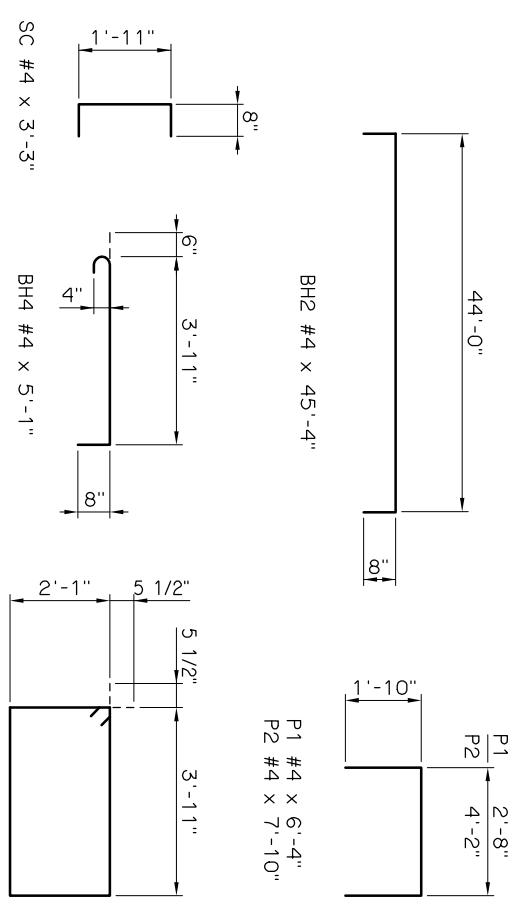
PLAN

PEDESTAL AND ANCHOR BOLT DIMENSION A					
SPAN	P1	P2	A	SPAN	A
55'	6 1/8"	9"	1'-0"	80'	3 1/8"
60'	5 3/4"	8 5/8"	1'-0"	85'	2 3/4"
65'	3 1/2"	6 3/8"	1'-0"	90'	5 1/4"
70'	3 1/8"	6"	1'-0"	95'	2 1/4"
75'	3 1/2"	6 3/8"	1'-3 1/2"	100'	4 7/8"

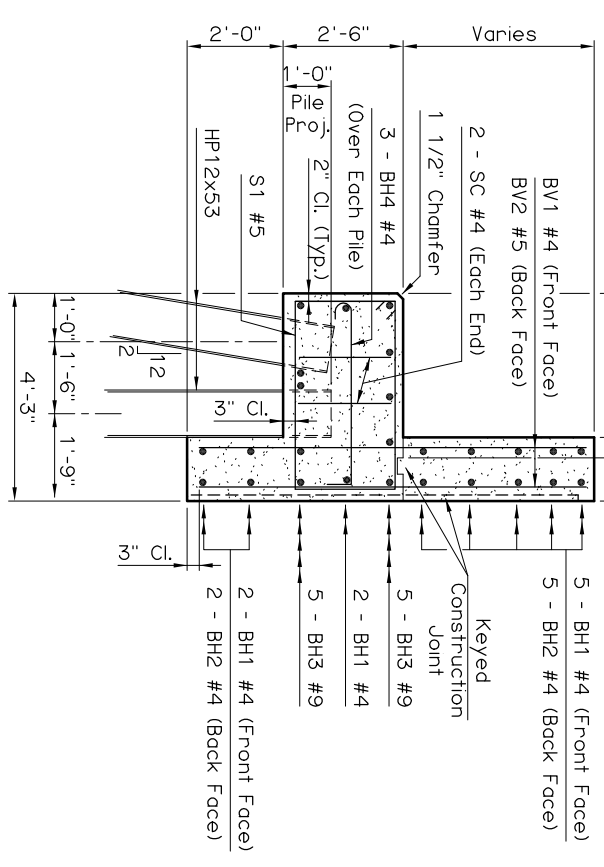


ELEVATION

(Adjust Spacing to Clear Piles)



TYPICAL SECTION THRU SEAT



APPROVED BY BRIDGE ENGINEER *Chad Head* DATE *8/16/09*

OKLAHOMA DEPT. OF TRANSPORTATION  
BRIDGE STANDARD (ENGLISH)

55' THRU 100' ABUTMENT ROLLED BEAM SPANS CONVENTIONAL (SHEET 1 OF 2)

1999 SPECIFICATIONS B40-C-ABUT-RB-55100-1 OOE B-250E