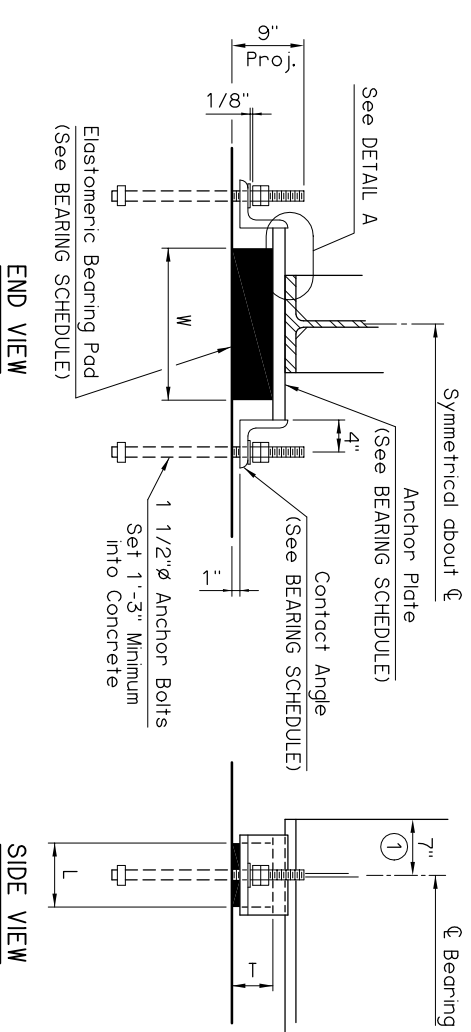


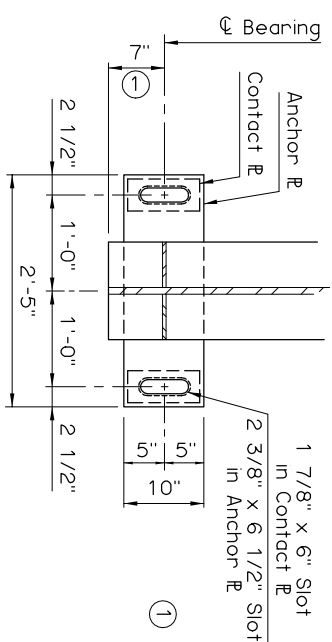
DETAIL A



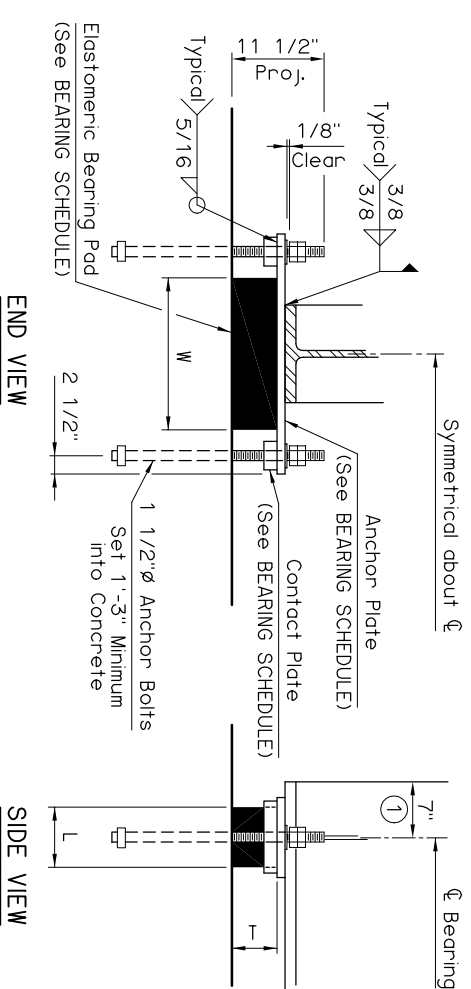
END VIEW

SIDE VIEW

PIER EXPANSION BEARING DETAILS
75' THRU 100' SPANS



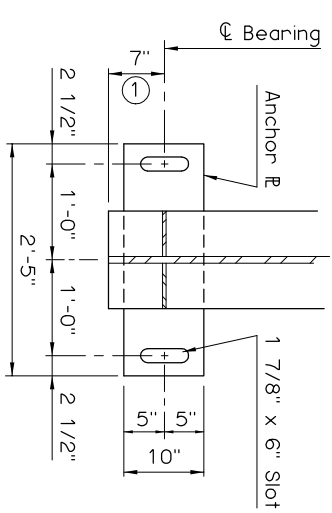
PLAN



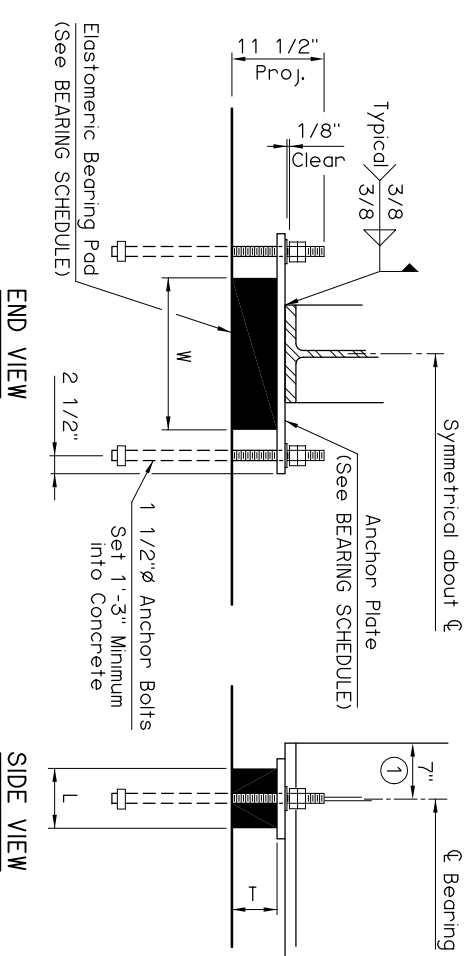
END VIEW

SIDE VIEW

PIER EXPANSION BEARING DETAILS
40' THRU 70' SPANS



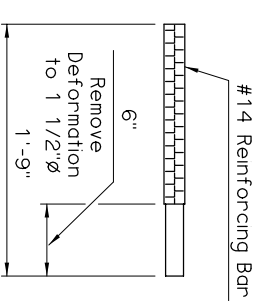
PLAN



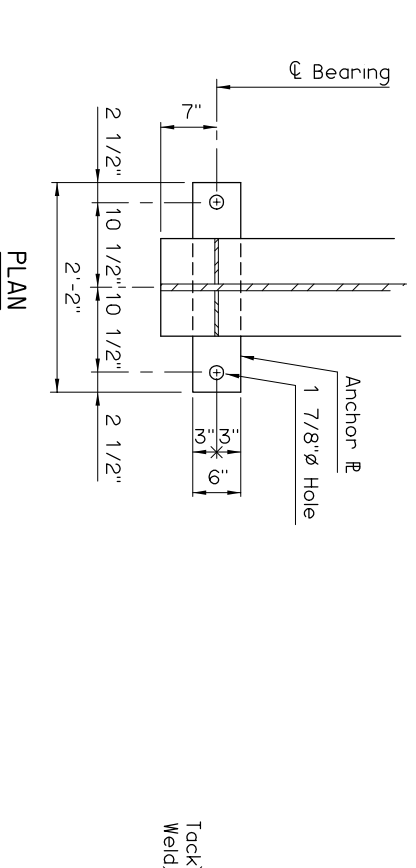
END VIEW

SIDE VIEW

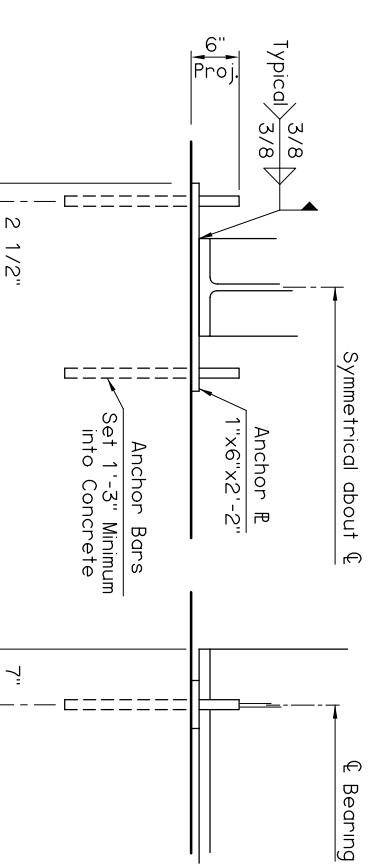
PIER EXPANSION BEARING DETAILS
30' AND 35' SPANS



ABUTMENT ANCHOR BAR DETAIL



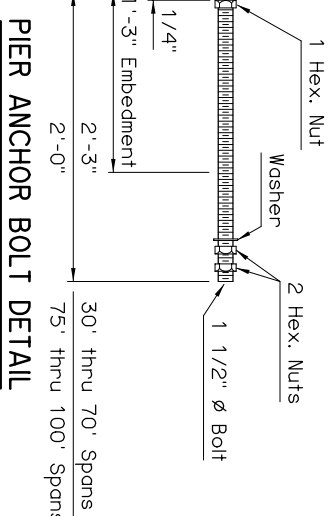
PLAN



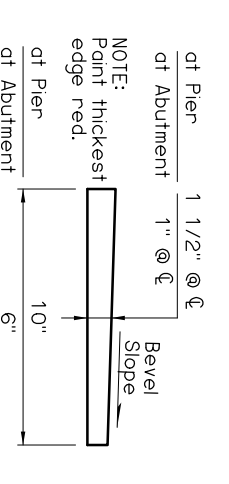
END VIEW

SIDE VIEW

ABUTMENT FIXED BEARING DETAILS



PIER ANCHOR BOLT DETAIL



BEVELED ANCHOR PLATE DETAIL

NOTE: Beveled Anchor Plate is required when angle between underside of girder and horizontal exceeds 1%. Bevel Slope to match angle between girder and horizontal.

SPAN	ANCHOR PLATE	CONTACT PLATE OR ANGLE	60 DUROMETER ELASTOMERIC BEARING PAD			MAXIMUM EXPANSION LENGTH WITHOUT BONDING (2)	MAXIMUM EXPANSION LENGTH WITH BONDING (2)	
			SIZE (l x L x w)	COVER LAYER	INNER LAYER			LAMINATE PLATE
30'	1 1/2"x10"x2'-5"	---	6 5/8"x6"x1'-7"	2 - 1/4"	12 - 3/8"	13 - 1/8"	110'	240'
35'	1 1/2"x10"x2'-5"	---	6 5/8"x6 1/2"x1'-7"	2 - 1/4"	12 - 3/8"	13 - 1/8"	120'	240'
40'	1 1/2"x10"x2'-5"	R 3/4"x4"x9"	6 5/8"x7"x1'-7"	2 - 1/4"	12 - 3/8"	13 - 1/8"	130'	240'
45'	1 1/2"x10"x2'-5"	R 7/8"x4"x9"	6 1/8"x7"x1'-7"	2 - 1/4"	11 - 3/8"	12 - 1/8"	135'	240'
50'	1 1/2"x10"x2'-5"	R 1"x4"x9"	5 5/8"x7"x1'-7"	2 - 1/4"	10 - 3/8"	11 - 1/8"	140'	220'
55'	1 1/2"x10"x2'-5"	R 1 3/8"x4"x9"	5 5/8"x7 1/2"x1'-7"	2 - 1/4"	10 - 3/8"	11 - 1/8"	145'	220'
60'	1 1/2"x10"x2'-5"	R 1 3/4"x4"x9"	5 5/8"x7 1/2"x1'-7"	2 - 1/4"	10 - 3/8"	11 - 1/8"	160'	220'
65'	1 1/2"x10"x2'-5"	R 1 3/4"x4"x9"	5 1/8"x7 1/2"x1'-7"	2 - 1/4"	9 - 3/8"	10 - 1/8"	160'	200'
70'	1 1/2"x10"x2'-5"	R 1 7/8"x4"x9"	5 1/8"x7 1/2"x1'-7"	2 - 1/4"	9 - 3/8"	10 - 1/8"	175'	200'
75'	1 1/2"x10"x1'-11"	L 6x6x1x10"	5 1/8"x8"x1'-7"	2 - 1/4"	9 - 3/8"	10 - 1/8"	175'	200'
80'	1 1/2"x10"x1'-11"	L 6x6x1x10"	5 1/8"x8"x1'-7"	2 - 1/4"	9 - 3/8"	10 - 1/8"	190'	200'
85'	1 1/2"x10"x1'-11"	L 6x6x1x10"	5 1/8"x8"x1'-7"	2 - 1/4"	9 - 3/8"	10 - 1/8"	200'	200'
90'	1 1/2"x10"x1'-11"	L 6x6x1x10"	5 1/8"x8"x1'-7"	2 - 1/4"	9 - 3/8"	10 - 1/8"	200'	200'
95'	1 1/2"x10"x1'-11"	L 6x6x1x10"	5 1/8"x8"x1'-7"	2 - 1/4"	9 - 3/8"	10 - 1/8"	200'	200'
100'	1 1/2"x10"x1'-11"	L 6x6x1x10"	5 1/8"x8"x1'-7"	2 - 1/4"	9 - 3/8"	10 - 1/8"	200'	200'

(2) Bonding to Anchor Plate shall be done in accordance with Subsection 733.06(b) of the Standard Specifications.

NOTE: Structural steel for Anchor Plates, Contact Plates, Contact Angles and Anchor Bolts shall conform to AASHTO M270 (ASTM A709), Grade 50W (Weathering Steel, Charpy V-Notch testing not required). Nuts, washers and welding shall have weathering characteristics.

APPROVED BY BRIDGE ENGINEER
Cheryl Hester
DATE 10-10-05

OKLAHOMA DEPT. OF TRANSPORTATION
BRIDGE STANDARD (ENGLISH)
BEARING DETAILS
ROLLED BEAMS
INTEGRAL

1999 SPECIFICATIONS B40-I-BRG-RB 01E B-199E