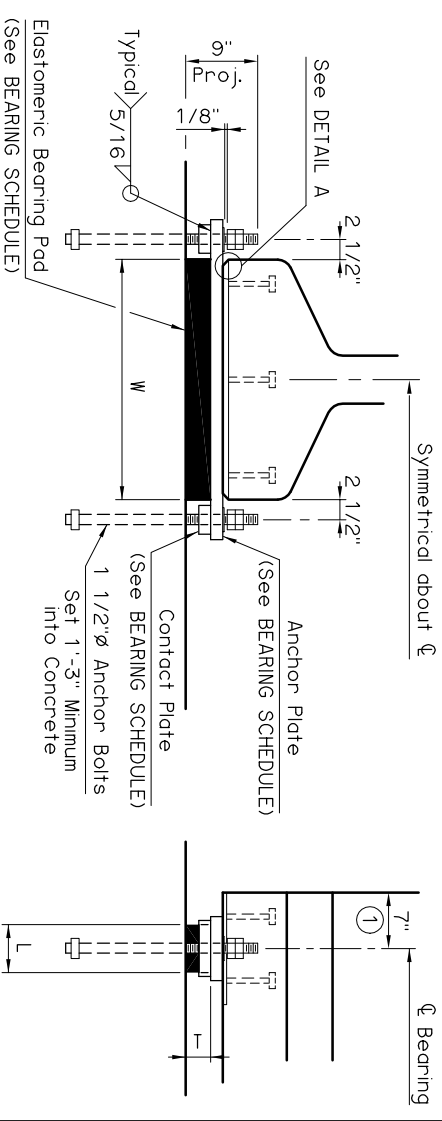
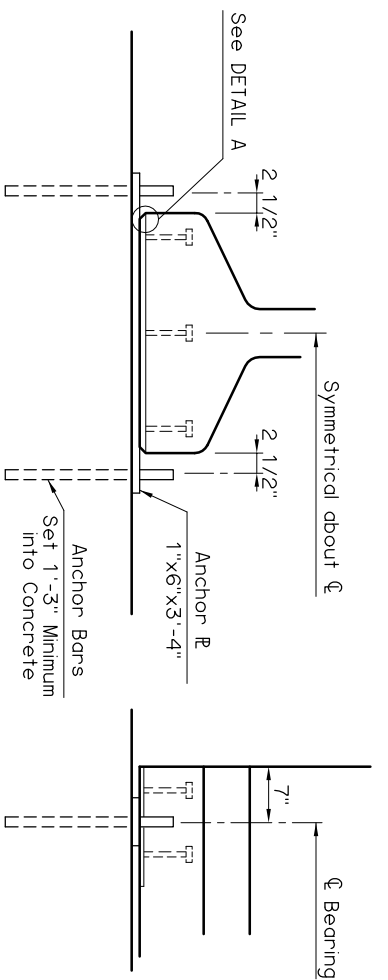


① Anchor bolts shall be centered in slots during setting of beams. Dimension may vary depending on temperature at the time of beam setting.



ABUTMENT FIXED BEARING DETAILS

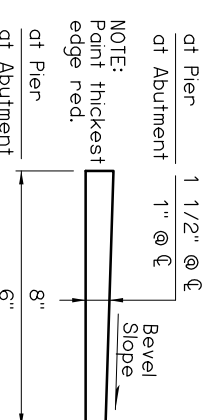
PIER EXPANSION BEARING DETAILS

SPAN	ANCHOR PLATE	CONTACT PLATE	BEARING SCHEDULE				MAXIMUM EXPANSION LENGTH ②
			60 DUROMETER ELASTOMERIC BEARING PAD				
			SIZE (T x L x W)	COVER LAYER	INNER LAYER	LAMINATE PLATE	
95'	1 1/2"x8"x3'-4"	1 1/2"x4"x7"	3 1/8"x6"x2'-6"	2 - 1/4"	5 - 3/8"	6 - 1/8"	235'
100'	1 1/2"x8"x3'-4"	1 5/8"x4"x7"	3 1/8"x6 1/2"x2'-6"	2 - 1/4"	5 - 3/8"	6 - 1/8"	235'
105'	1 1/2"x8"x3'-4"	1 3/4"x4"x7"	3 1/8"x6 1/2"x2'-6"	2 - 1/4"	5 - 3/8"	6 - 1/8"	235'
110'	1 1/2"x8"x3'-4"	1 3/4"x4"x7"	3 1/8"x6 1/2"x2'-6"	2 - 1/4"	5 - 3/8"	6 - 1/8"	235'
115'	1 1/2"x8"x3'-4"	1 7/8"x4"x7"	3 1/8"x6 1/2"x2'-6"	2 - 1/4"	5 - 3/8"	6 - 1/8"	235'
120'	1 1/2"x8"x3'-4"	1 7/8"x4"x7"	3 1/8"x7"x2'-6"	2 - 1/4"	5 - 3/8"	6 - 1/8"	235'
125'	1 1/2"x8"x3'-4"	2"x4"x7"	3 1/8"x7"x2'-6"	2 - 1/4"	5 - 3/8"	6 - 1/8"	235'

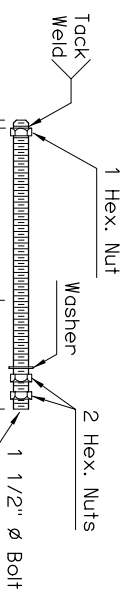
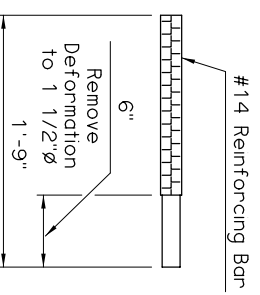
② Bonding of Bearing Pad not required.

NOTE: Beveled Anchor Plate is required when angle between underside of girder and horizontal exceeds 1%. Bevel Slope to match angle between girder and horizontal.

BEVELED ANCHOR PLATE DETAIL



ABUTMENT ANCHOR BAR DETAIL



PIER ANCHOR BOLT DETAIL

NOTE: Structural steel for Anchor Plates, Contact Plates and Anchor Bolts shall conform to AASHTO M270 (ASTM A709), Grade 50W (Weathering Steel, Chippy V-Notch testing not required). Nuts, washers and welding shall have weathering characteristics.

APPROVED BY BRIDGE ENGINEER

*Chad H. Hest*

DATE 10-10-05

OKLAHOMA DEPT. OF TRANSPORTATION  
BRIDGE STANDARD (ENGLISH)  
BEARING DETAILS  
TYPE J.P.C. BEAMS  
INTEGRAL

1999 SPECIFICATIONS

B40-I-BRG-PCU

01E

B-198E