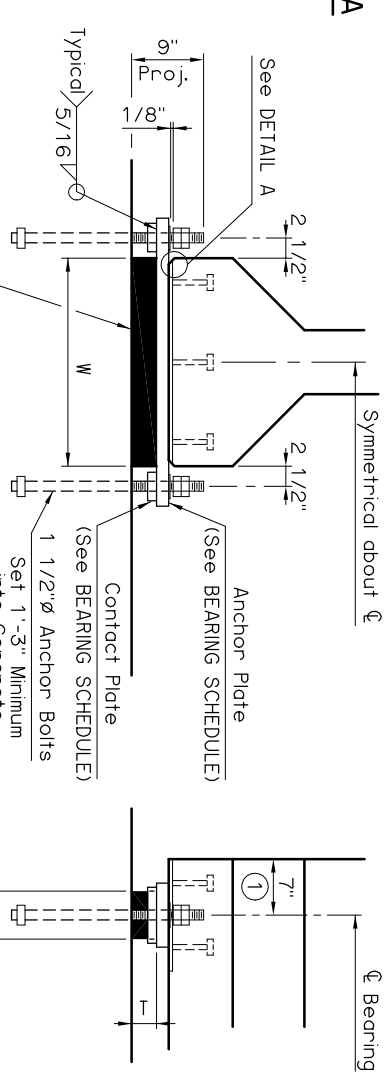
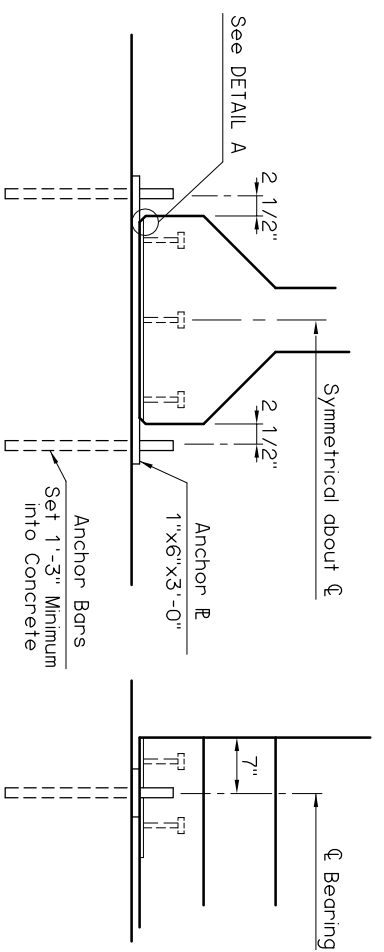
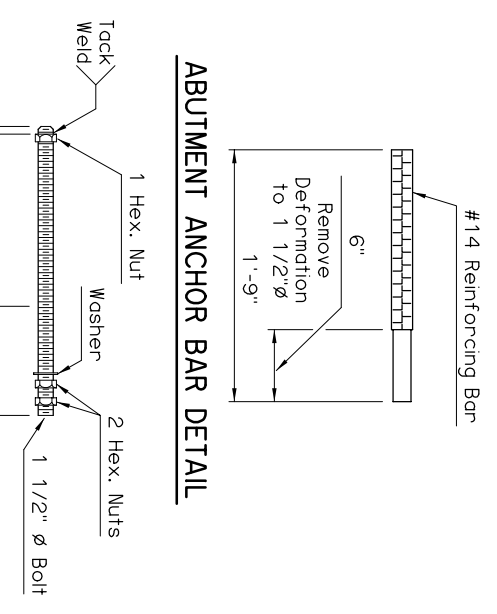


① Anchor Bolts shall be centered in slots during setting of beams. Dimension may vary depending on temperature at the time of beam setting.

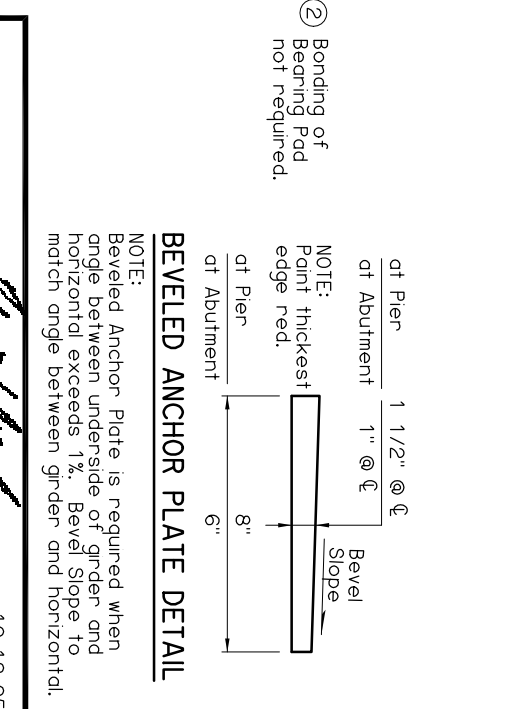


ABUTMENT FIXED BEARING DETAILS

PIER EXPANSION BEARING DETAILS



SPAN	ANCHOR PLATE	CONTACT PLATE	BEARING SCHEDULE				MAXIMUM EXPANSION LENGTH ②
			60 DUROMETER ELASTOMERIC BEARING PAD SIZE (l x L x W)	COVER LAYER	INNER LAYER	LAMINATE PLATE	
65'	1 1/2"x8"x3'-0"	5/8"x4"x7"	3 1/8"x6"x2'-2"	2 - 1/4"	5 - 3/8"	6 - 1/8"	235'
70'	1 1/2"x8"x3'-0"	3/4"x4"x7"	3 1/8"x6"x2'-2"	2 - 1/4"	5 - 3/8"	6 - 1/8"	235'
75'	1 1/2"x8"x3'-0"	7/8"x4"x7"	3 1/8"x6"x2'-2"	2 - 1/4"	5 - 3/8"	6 - 1/8"	235'
80'	1 1/2"x8"x3'-0"	1"x4"x7"	3 1/8"x6"x2'-2"	2 - 1/4"	5 - 3/8"	6 - 1/8"	235'
85'	1 1/2"x8"x3'-0"	1 1/8"x4"x7"	3 1/8"x6 1/2"x2'-2"	2 - 1/4"	5 - 3/8"	6 - 1/8"	235'
90'	1 1/2"x8"x3'-0"	1 1/4"x4"x7"	3 1/8"x6 1/2"x2'-2"	2 - 1/4"	5 - 3/8"	6 - 1/8"	235'
95'	1 1/2"x8"x3'-0"	1 1/2"x4"x7"	3 1/8"x6 1/2"x2'-2"	2 - 1/4"	5 - 3/8"	6 - 1/8"	235'
100'	1 1/2"x8"x3'-0"	1 5/8"x4"x7"	3 1/8"x7"x2'-2"	2 - 1/4"	5 - 3/8"	6 - 1/8"	235'
105'	1 1/2"x8"x3'-0"	1 5/8"x4"x7"	3 1/8"x7"x2'-2"	2 - 1/4"	5 - 3/8"	6 - 1/8"	235'
110'	1 1/2"x8"x3'-0"	1 3/4"x4"x7"	3 1/8"x7"x2'-2"	2 - 1/4"	5 - 3/8"	6 - 1/8"	235'



PIER ANCHOR BOLT DETAIL

NOTE:
Structural steel for Anchor Plates, Contact Plates and Anchor Bolts shall conform to AASHTO M270 (ASTM A709), Grade 50W (Weathering Steel, Charpy V-Notch testing not required). Nuts, washers and welding shall have weathering characteristics.

APPROVED BY BRIDGE ENGINEER *Cheryl Hester* DATE 10-10-05

OKLAHOMA DEPT. OF TRANSPORTATION
BRIDGE STANDARD (ENGLISH)
BEARING DETAILS
TYPE IV AND TYPE BT-72 P. C. BEAMS
INTEGRAL

1999 SPECIFICATIONS B40-I-BRG-PCABT 01E B-197E