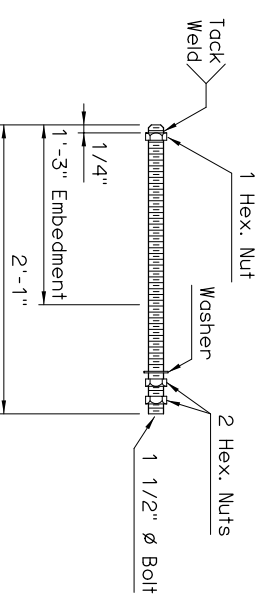
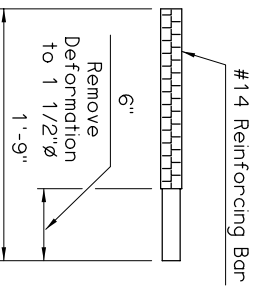
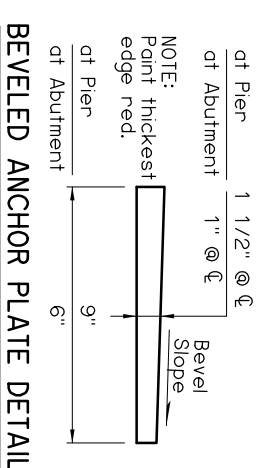


NOTE:
Structural steel for Anchor Plates, Contact Plates and Anchor Bolts shall conform to AASHTO M270 (ASTM A709), Grade 50W (Weathering Steel, Charpy V-Notch testing not required). Nuts, washers and welding shall have weathering characteristics.

SPAN	ANCHOR PLATE	CONTACT PLATE	BEARING SCHEDULE				MAXIMUM EXPANSION LENGTH WITHOUT BONDING	MAXIMUM EXPANSION LENGTH WITH BONDING
			SIZE (T x L x W)	COVER LAYER	INNER LAYER	LAMINATE PLATE		
45'	1 1/2"x9"x2'-8"	---	4 1/8"x6"x1'-10"	2 - 1/4"	7 - 3/8"	8 - 1/8"	240'	310'
50'	1 1/2"x9"x2'-8"	1/2"x4"x8"	4 1/8"x6"x1'-10"	2 - 1/4"	7 - 3/8"	8 - 1/8"	265'	310'
55'	1 1/2"x9"x2'-8"	3/4"x4"x8"	4 1/8"x6 1/2"x1'-10"	2 - 1/4"	7 - 3/8"	8 - 1/8"	270'	310'
60'	1 1/2"x9"x2'-8"	1"x4"x8"	4 1/8"x6 1/2"x1'-10"	2 - 1/4"	7 - 3/8"	8 - 1/8"	295'	310'
65'	1 1/2"x9"x2'-8"	1 1/4"x4"x8"	4 1/8"x6 1/2"x1'-10"	2 - 1/4"	7 - 3/8"	8 - 1/8"	310'	310'
70'	1 1/2"x9"x2'-8"	1 1/2"x4"x8"	4 1/8"x6 1/2"x1'-10"	2 - 1/4"	7 - 3/8"	8 - 1/8"	310'	310'

② Bonding to Anchor Plate shall be done in accordance with Subsection 733.06(b) of the Standard Specifications.

NOTE:
Beveled Anchor Plate is required when angle between underside of girder and horizontal exceeds 1%. Bevel Slope to match angle between girder and horizontal.



APPROVED BY BRIDGE ENGINEER

OKLAHOMA DEPT. OF TRANSPORTATION

BRIDGE STANDARD (ENGLISH)

BEARING DETAILS

TYPE III AND TYPE C P.C. BEAMS

INTEGRAL

DATE 10-10-05

1999 SPECIFICATIONS

B40-I-BRG-PC3

01E

B-196E

① Anchor Bolts shall be centered in slots during setting of beams. Dimension may vary depending on temperature at the time of beam setting.