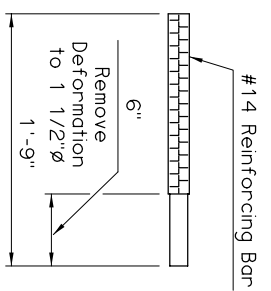


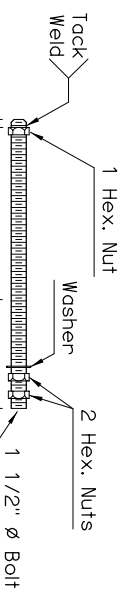
ABUTMENT FIXED BEARING DETAILS

PIER EXPANSION BEARING DETAILS

PIER EXPANSION BEARING DETAILS



ABUTMENT ANCHOR BAR DETAIL

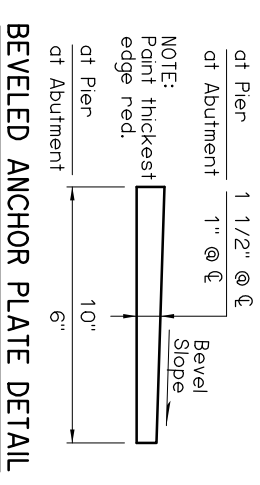


PIER ANCHOR BOLT DETAIL

SPAN	ANCHOR PLATE	CONTACT PLATE	60 DUROMETER ELASTOMERIC BEARING PAD				MAXIMUM EXPANSION LENGTH WITHOUT BONDING	MAXIMUM EXPANSION LENGTH WITH BONDING
			SIZE (T x L x W)	COVER LAYER	INNER LAYER	LAMINATE PLATE		
30'	1 1/2" x 10" x 2'-4"	---	5 5/8" x 6" x 1'-6"	2 - 1/4"	10 - 3/8"	11 - 1/8"	250'	420'
35'	1 1/2" x 10" x 2'-4"	---	5 5/8" x 6 1/2" x 1'-6"	2 - 1/4"	10 - 3/8"	11 - 1/8"	265'	420'
40'	1 1/2" x 10" x 2'-4"	1/2" x 4" x 9"	5 5/8" x 7" x 1'-6"	2 - 1/4"	10 - 3/8"	11 - 1/8"	280'	420'
45'	1 1/2" x 10" x 2'-4"	1" x 4" x 9"	5 5/8" x 7" x 1'-6"	2 - 1/4"	10 - 3/8"	11 - 1/8"	315'	420'
50'	1 1/2" x 10" x 2'-4"	1 1/2" x 4" x 9"	5 5/8" x 7" x 1'-6"	2 - 1/4"	10 - 3/8"	11 - 1/8"	350'	420'

② Bonding to Anchor Plate shall be done in accordance with Subsection 733.06(b) of the Standard Specifications.

NOTE: Structural steel for Anchor Plates, Contact Plates and Anchor Bolts shall conform to AASHTO M270 (ASTM A709), Grade 50W (Weathering Steel, Charpy V-Notch testing not required). Nuts, washers and welding shall have weathering characteristics.



BEVELED ANCHOR PLATE DETAIL

NOTE: Beveled Anchor Plate is required when angle between underside of girder and horizontal exceeds 1%. Bevel Slope to match angle between girder and horizontal.