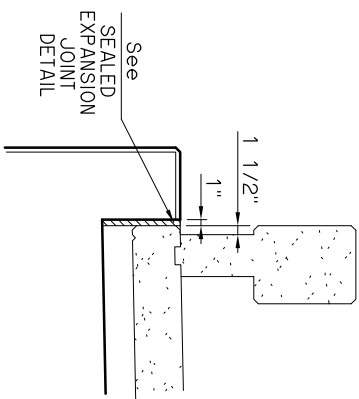
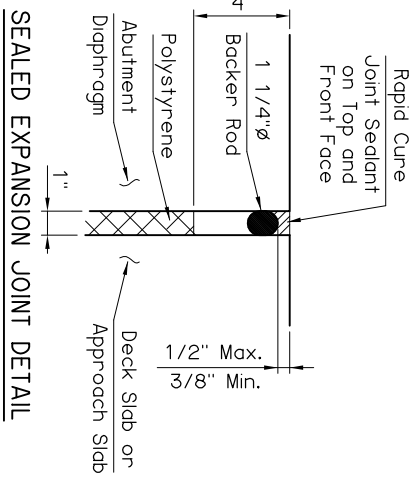


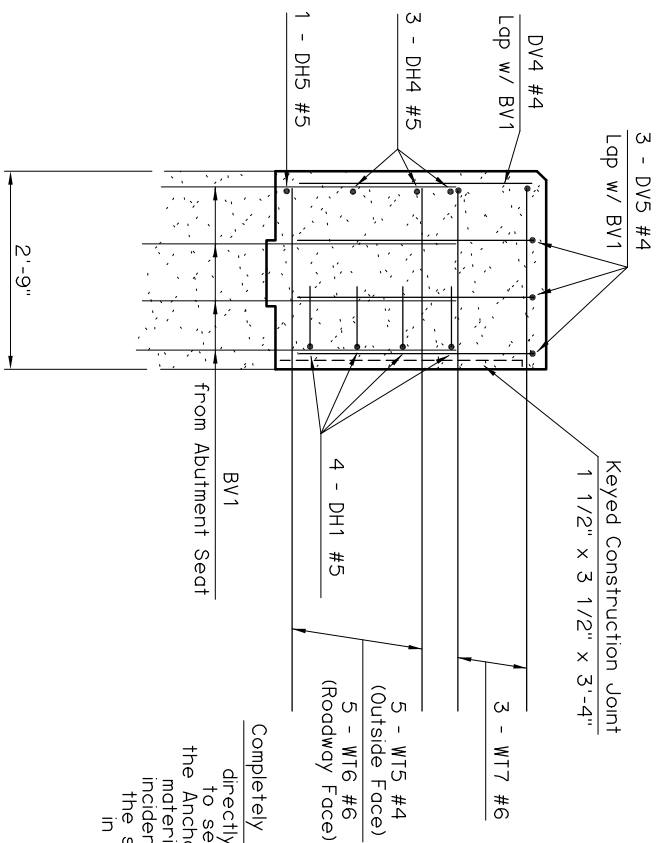
Deck Slab shown for informational purposes only. Deck Slab shall not be poured until the Abutment Diaphragms have attained a strength of 3000 psi.



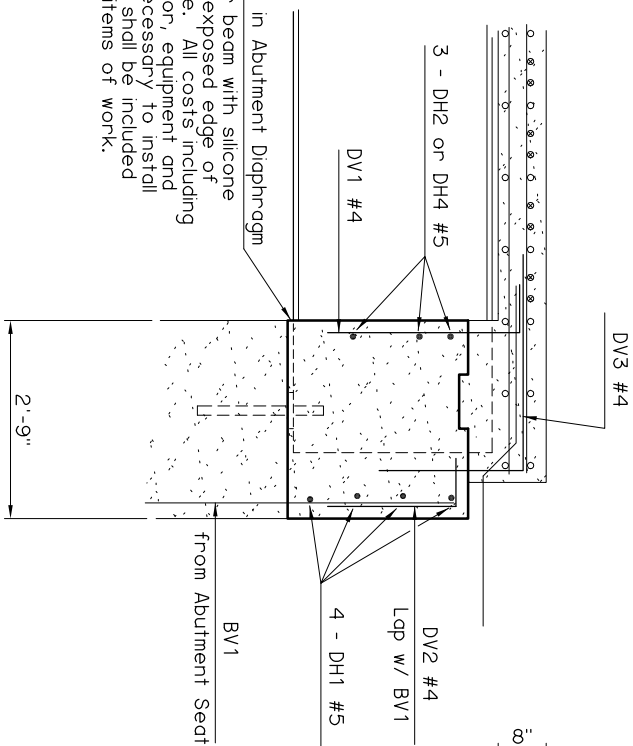
SECTION D



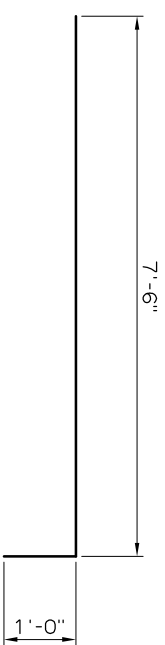
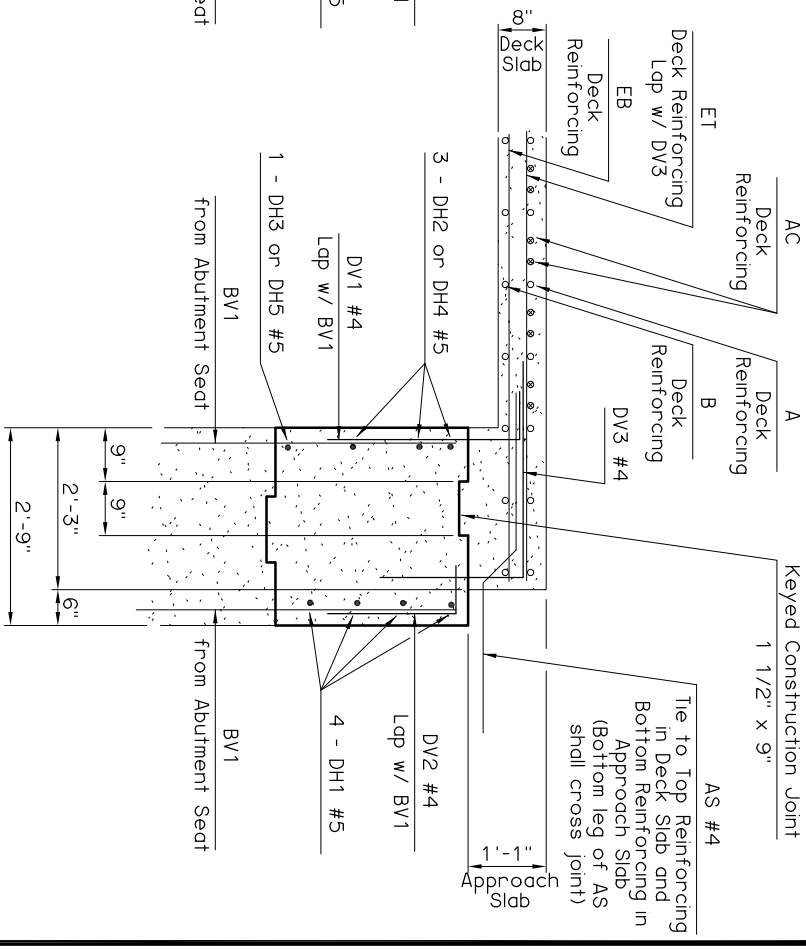
SECTION C-C



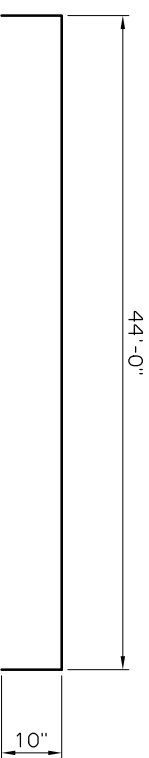
SECTION B-B



SECTION A-A

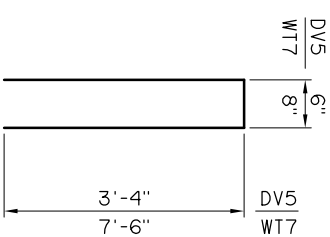


WT6 #6 x 8'-6"

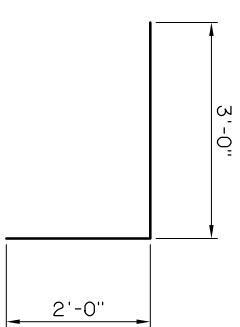


DH1 #5 x 45'-8"

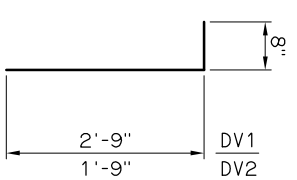
ABUTMENT DIAPHRAGM BAR LIST ONE SHOWN			
EPOXY COATED REINFORCING			
MARK	SIZE	NO.	FORM LENGTH
DV1	#4	47	BNT. 3'-5"
DV2	#4	42	BNT. 2'-5"
DV3	#4	43	BNT. 5'-0"
DV4	#4	4	STR. 3'-4"
DV5	#4	6	BNT. 7'-2"
DH1	#5	4	BNT. 45'-8"
DH2	#5	9	STR. 11'-6"
DH3	#5	3	STR. 7'-6"
DH4	#5	6	STR. 4'-1"
DH5	#5	2	STR. 2'-1"
WT5	#4	10	STR. 5'-9"
WT6	#6	10	BNT. 8'-6"
WT7	#6	6	BNT. 15'-8"



DV5 #4 x 7'-2"
WT7 #6 x 15'-8"



DV3 #4 x 5'-0"



DV1 #4 x 3'-5"
DV2 #4 x 2'-5"

APPROVED BY BRIDGE ENGINEER *Clayton Head* DATE 12-1-04

OKLAHOMA DEPT. OF TRANSPORTATION
BRIDGE STANDARD (ENGLISH)
ABUTMENT DIAPHRAGM DETAILS
30' THRU 50' ROLLED BEAM SPANS
(SHEET 2 OF 2)

1999 SPECIFICATIONS B-180E