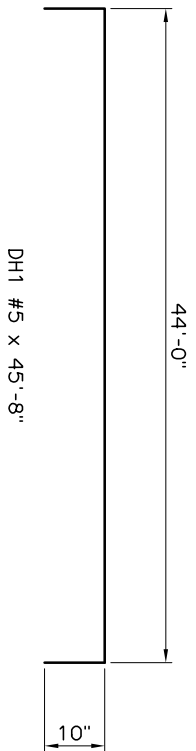
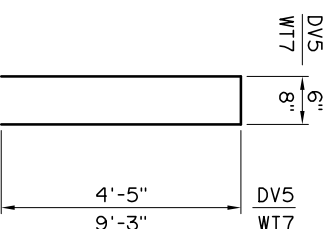
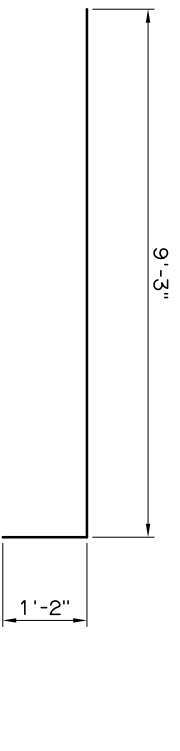
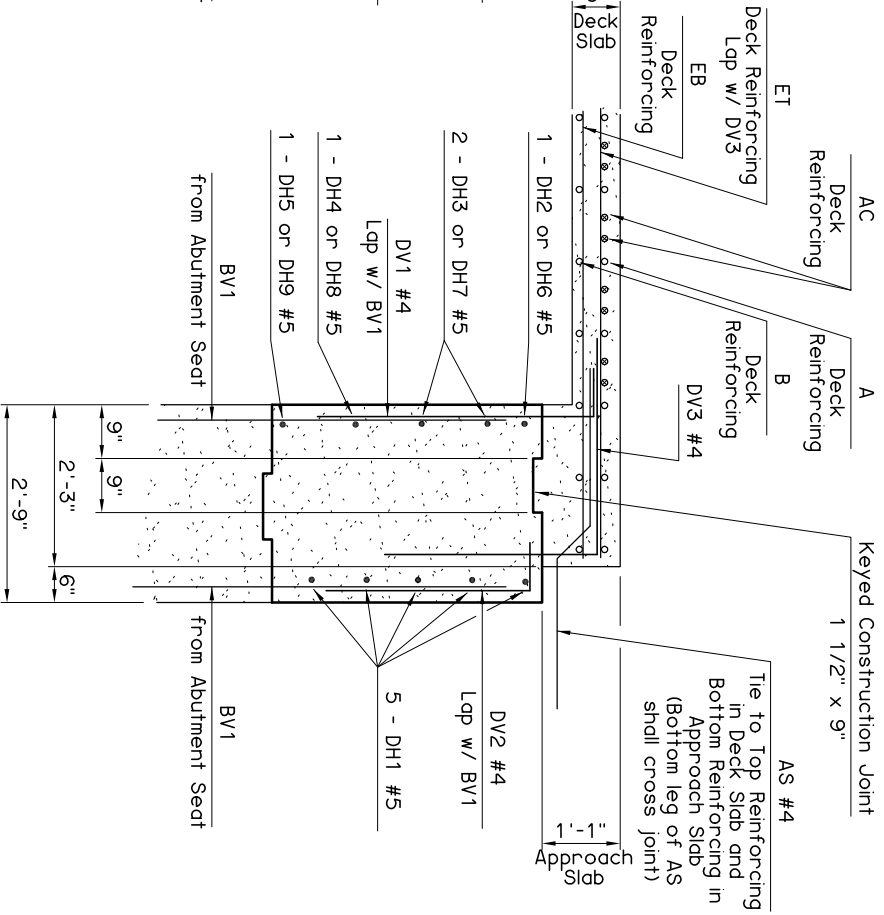
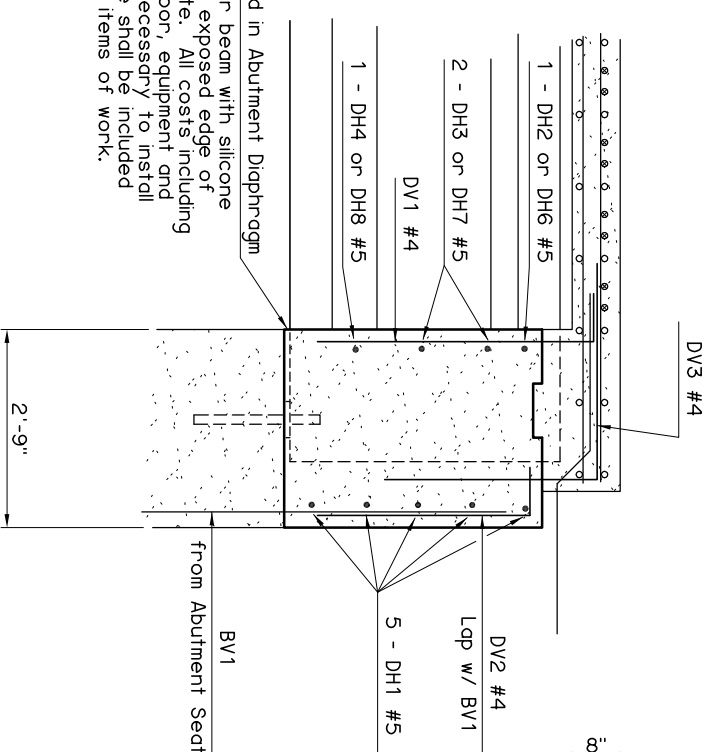
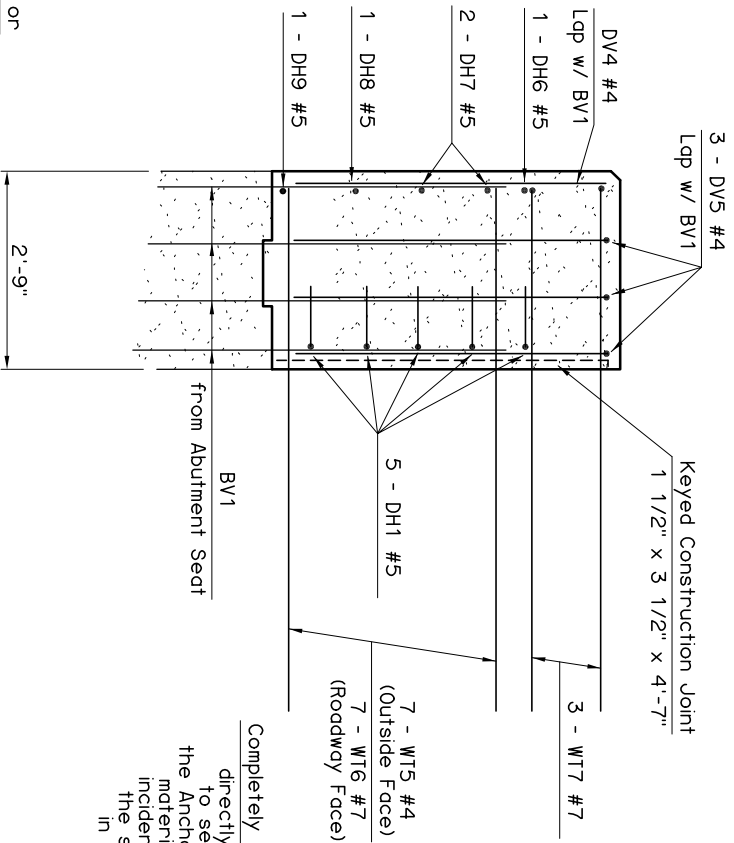
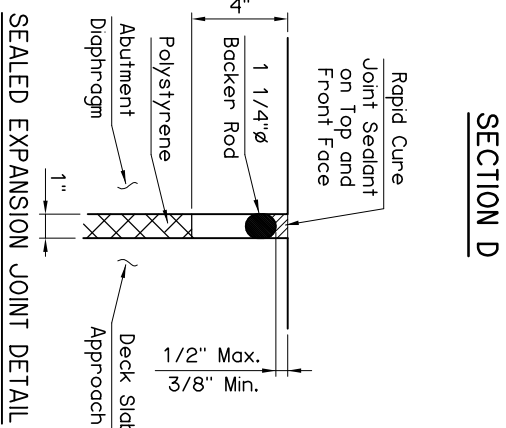
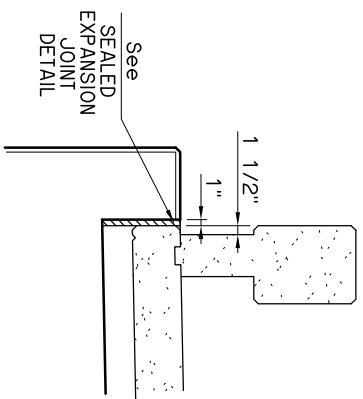
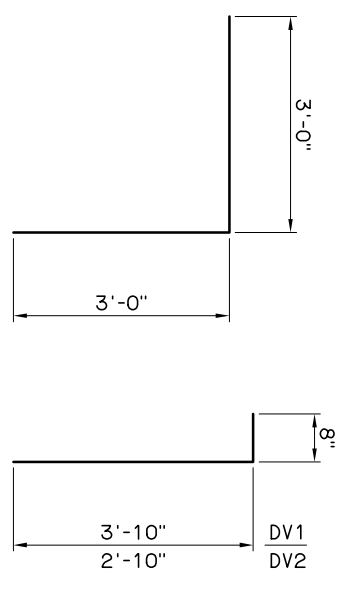


Deck Slab shown for informational purposes only. Deck Slab shall not be poured until the Abutment Diaphragms have attained a strength of 3000 psi.



ABUTMENT DIAPHRAGM BAR LIST ONE SHOWN			
EPOXY COATED REINFORCING			
MARK	SIZE	NO.	FORM LENGTH
DV1	#4	44	BNT. 4'-6"
DV2	#4	42	BNT. 3'-6"
DV3	#4	43	BNT. 6'-0"
DV4	#4	4	STR. 4'-5"
DV5	#4	6	BNT. 9'-4"
DH1	#5	5	BNT. 45'-8"
DH2	#5	3	STR. 9'-8"
DH3	#5	6	STR. 10'-5"
DH4	#5	3	STR. 9'-2"
DH5	#5	3	STR. 7'-0"
DH6	#5	2	STR. 4'-2"
DH7	#5	4	STR. 4'-6"
DH8	#5	2	STR. 3'-11"
DH9	#5	2	STR. 2'-10"
WT5	#4	14	STR. 5'-9"
WT6	#7	14	BNT. 10'-5"
WT7	#7	6	BNT. 19'-2"



DV3 #4 x 6'-0"

DV1 #4 x 4'-6"

DV2 #4 x 3'-6"

APPROVED BY BRIDGE ENGINEER *Chad Head* DATE 12-1-04

OKLAHOMA DEPT. OF TRANSPORTATION  
BRIDGE STANDARD (ENGLISH)

ABUTMENT DIAPHRAGM DETAILS  
TYPE III AND TYPE C P.C. BEAMS  
INTEGRAL (SHEET 2 OF 2)

1999 SPECIFICATIONS B40-I-ADIA-PC3-2

OIE B-174E