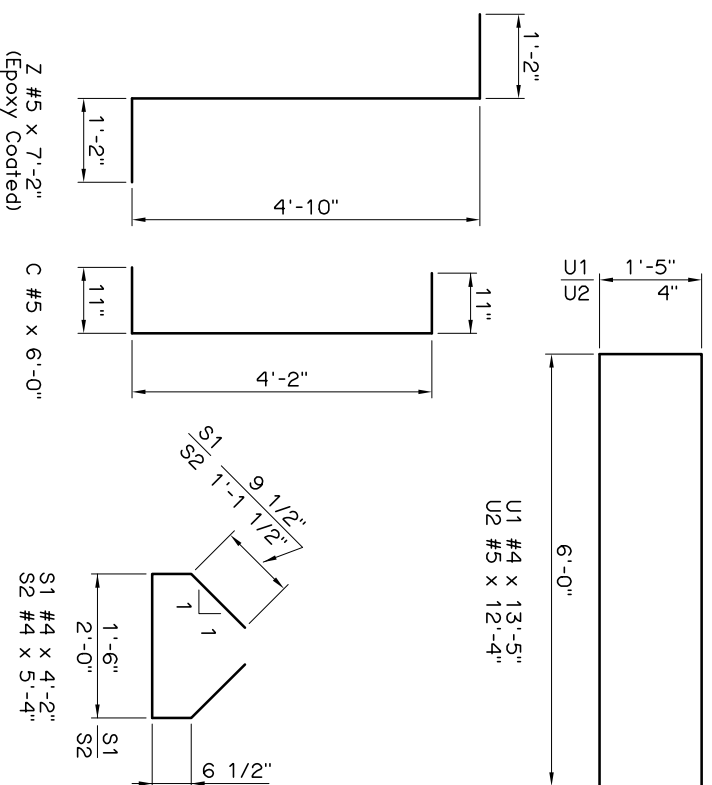


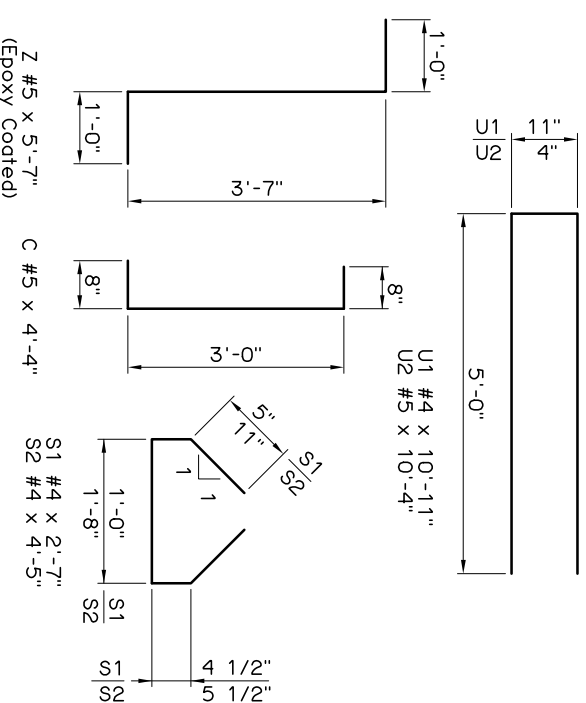
EXAMPLES

Top surface of P.C. Beams shall be intentionally roughened to a minimum height of 1/4" over a maximum pitch of 2" measured longitudinally along the length of the beam. The crest and trough associated with the height shall not be less than 1/2" and shall extend the full width of the top flange. Roughened surface may be obtained by a special trowel as shown in the examples, by cleaning the concrete surface with a stiff wire brush (or blasting) to the extent that aggregate is exposed to a height of 1/4", or by another approved method. The method used shall be submitted for approval by the Engineer. Repair any damage to reinforcement epoxy coating before placement of deck concrete.

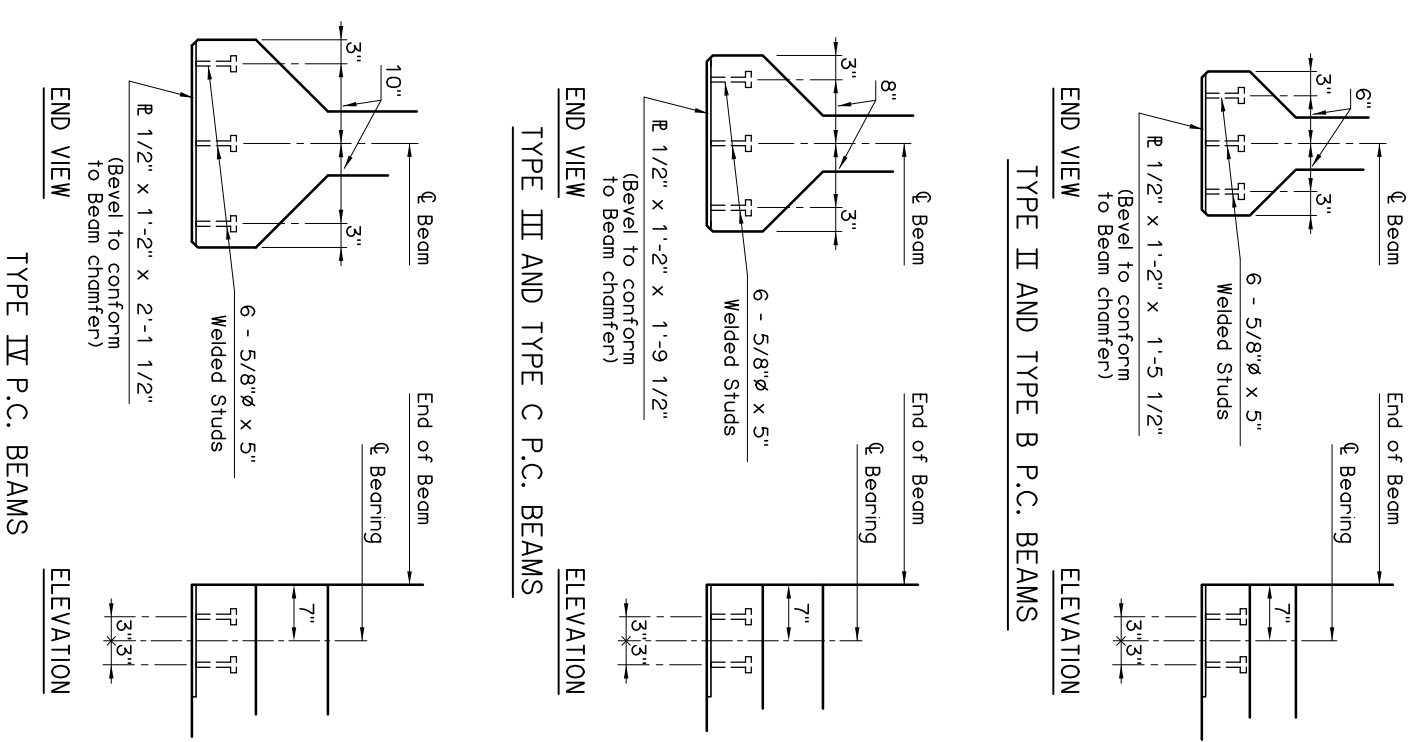


TYPE IV P.C. BEAMS

P.C. BEAM BAR BEND DETAILS



TYPE C P.C. BEAMS



APPROVED BY BRIDGE ENGINEER *Chad Head* DATE *8/16/09*

OKLAHOMA DEPT. OF TRANSPORTATION
BRIDGE STANDARD (ENGLISH)
P.C. BEAM DETAILS
TYPE II, B, III, C AND IV P.C. BEAMS
INTEGRAL

1999 SPECIFICATIONS B40-I-PCB-D1L

CODE B-113E