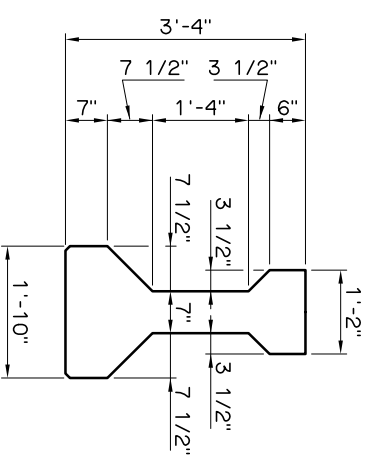


END VIEW
(Type C P.C.B.)



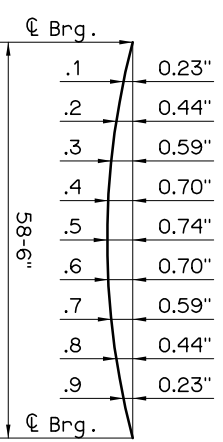
HALF ELEVATION AT ABUTMENT

HALF ELEVATION AT PIER

PRESTRESSED CONCRETE BEAM NOTES

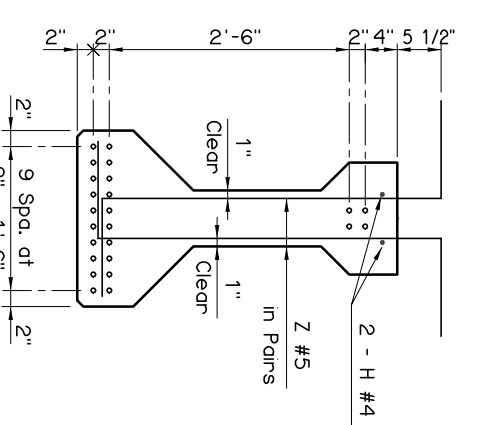
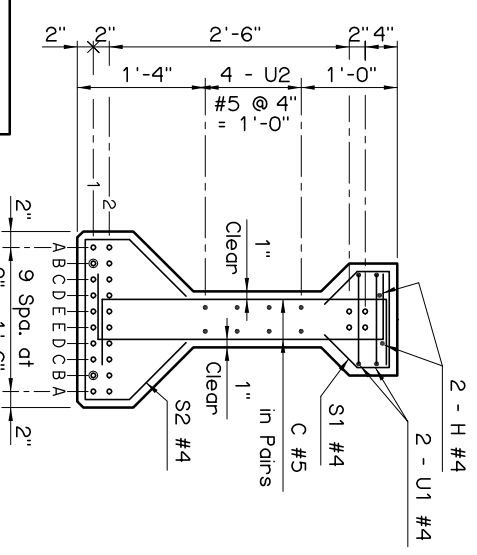
COMPRESSIVE STRENGTH
The required compressive strength of the concrete is 6,000 p.s.i. at transfer of prestress and 8,000 p.s.i. at 28 days.

STRAND TYPE
The required strand type is low-relaxation, Use strand having a nominal diameter of 0.6 with ultimate tensile strength of 270 k.s.i.
LFD OPERATING RATING - HS 37.3
The Operating Rating shown is based on a nominal strength using only strands that are bonded for the full length of the beam. All partially bonded strands are neglected in strength computations.



NOTE:
The Dead Load Deflection shown above at the tenth points are the initial deflections due to Deck Slab + Diaphragms + 5 p.s.f. Deck Form Allowance + Concrete Traffic Rail. It does not include the Beam weight or Future Wearing Surface.

Information shown on this sheet is applicable only to the standard bridge cross-section with 40' Clear Roadway, 8" Deck Slab and 4 Beams at 11'-4" spacing. Stay-in-Place Deck Forms are permitted if the conditions listed in the STAY-IN-PLACE DECK FORM NOTES on LONGITUDINAL SECTION sheet are satisfied.
Any modification will require a custom design with an appropriate Dead Load Deflection Diagram.



| DEBOND SCHEDULE | |
|-----------------|--------------------------------|
| DEBOND PAIR | DEBOND LENGTH FROM END OF BEAM |
| B1 | 4'-0" |

BEAM SECTIONS
(24 - 0.6"Ø STRANDS)

APPROVED BY BRIDGE ENGINEER *Chad Head* DATE 12-1-04

OKLAHOMA DEPT. OF TRANSPORTATION
BRIDGE STANDARD (ENGLISH)
TYPE C P.C. BEAM DETAILS
60' SPAN INTEGRAL

1999 SPECIFICATIONS B40-I-PCB-C-60 O1E B-100E