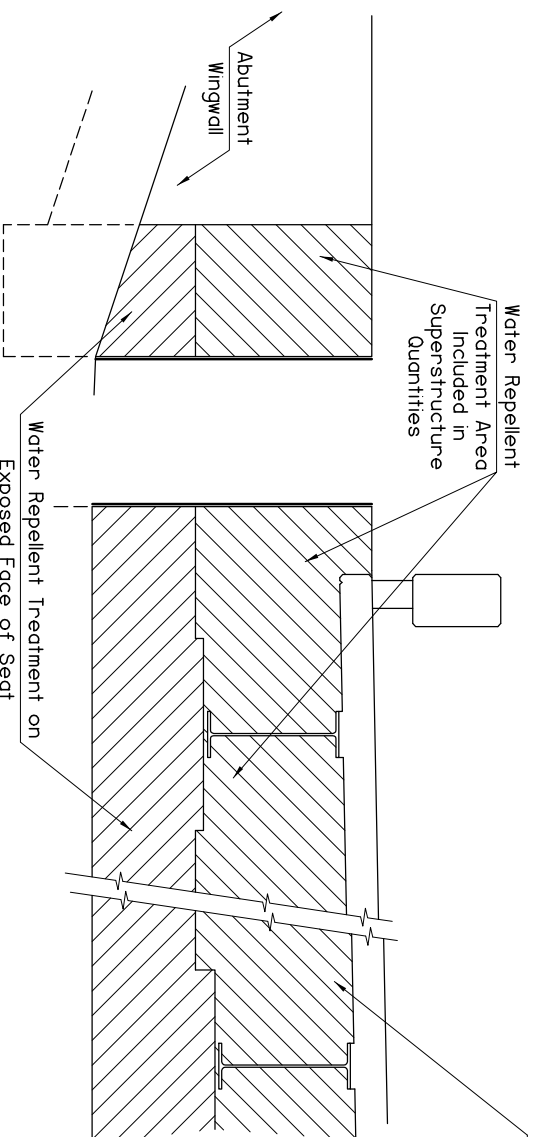


HALF SECTION AT INTERMEDIATE DIAPHRAGM

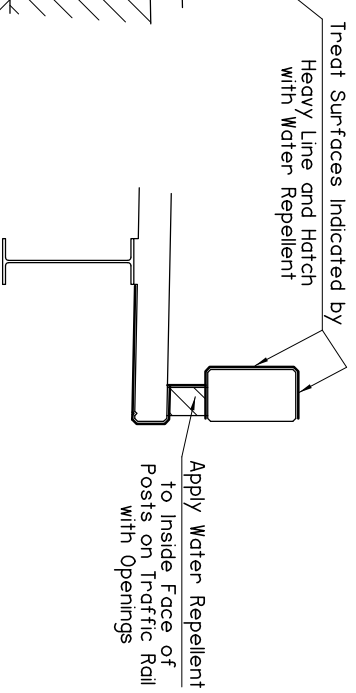
TYPICAL CROSS SECTION

HALF SECTION AT PIER DIAPHRAGM

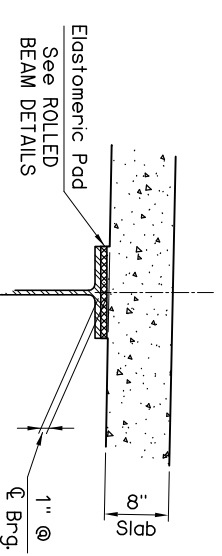
NOTE:
For LFD Operating Rating and Dead Load Deflection Diagram, see ROLLED BEAM DETAILS.



ABUTMENT DIAPHRAGM



TRAFFIC RAIL, SLAB AND BEAM



BEAM HAUNCH DETAIL

NOTE:
Plan quantities for CLASS AA CONCRETE include Beam Haunches. Haunch height shown is at centerline bearing only, measured from bottom of Deck Slab to top of Beam, and varies across the span. Haunch height to be determined after erection of beams to provide for dead load deflection and grade adjustment, but the poy quantity will be as shown on the plans.

APPROVED BY BRIDGE ENGINEER *Chad Head* DATE 12-1-04

OKLAHOMA DEPT. OF TRANSPORTATION
BRIDGE STANDARD (ENGLISH)
TYPICAL CROSS SECTION
ROLLED BEAMS
INTEGRAL

1999 SPECIFICATIONS B40-I-XSECT-RB O1E B-63E