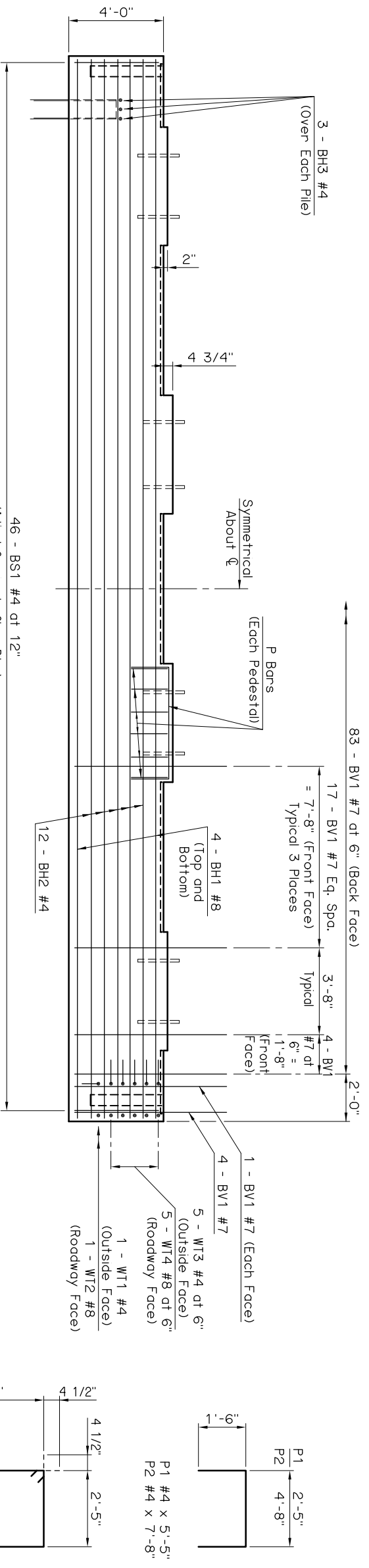
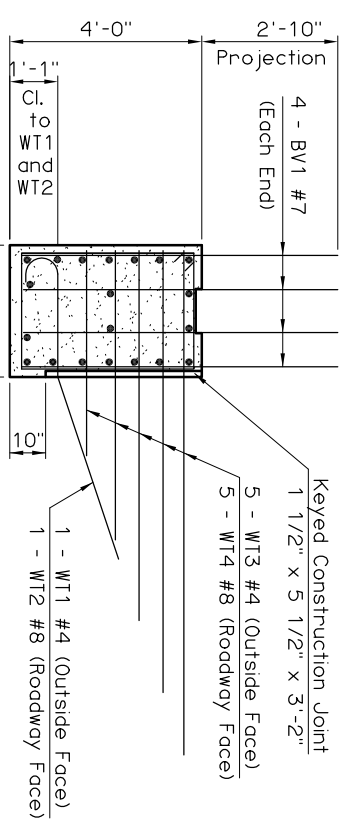


PILE SCHEDULE						MAXIMUM FACTORED PILE LOAD
SPAN	TOTAL NUMBER OF PILES	N	A	B	C	
95'	10	4	4'-6"	2'-3"	2'-3"	78.1 TON
100'	11	5	4'-0"	0"	2'-6"	72.9 TON
105'	11	5	4'-0"	0"	2'-6"	74.9 TON
110'	11	5	4'-0"	0"	2'-6"	76.8 TON
115'	12	5	3'-8"	1'-10"	2'-4"	72.2 TON
120'	12	5	3'-8"	1'-10"	2'-4"	74.0 TON
125'	12	5	3'-8"	1'-10"	2'-4"	75.8 TON

**PLAN**

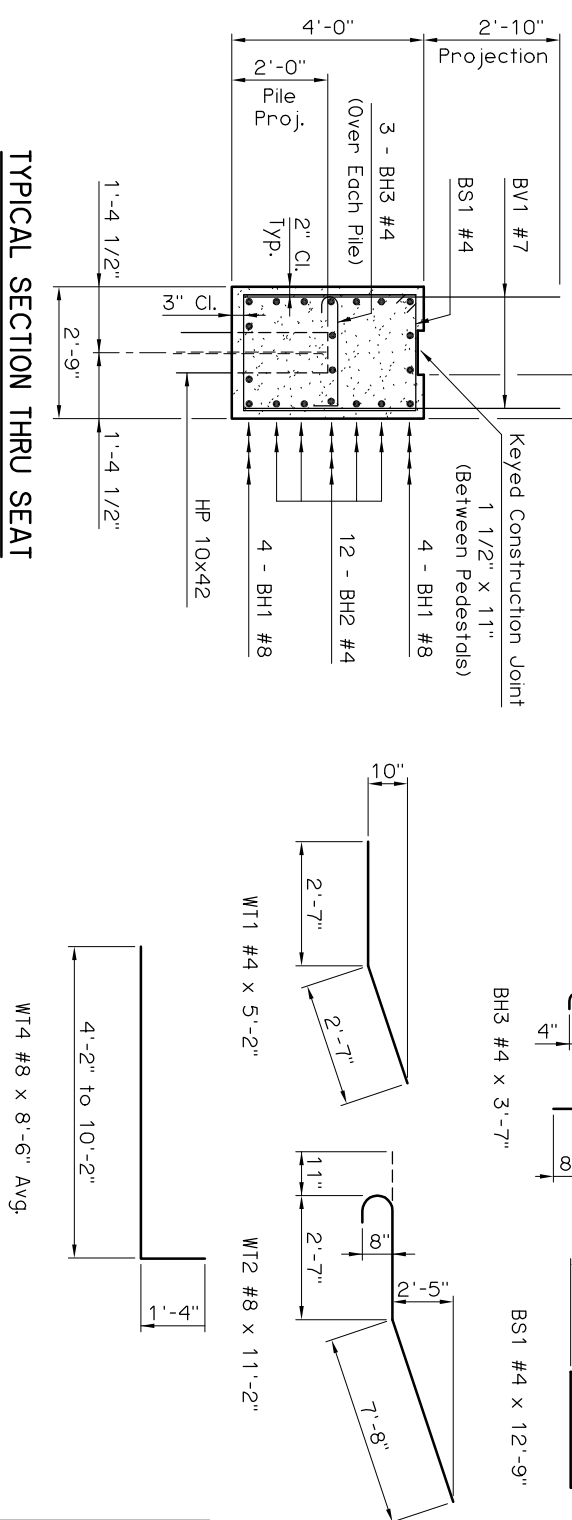


**ELEVATION**



**SECTION A-A**

**TYPICAL SECTION THRU SEAT**



All WT Wing reinforcing tied to Abutment Seat reinforcing must be in place prior to pouring Abutment Seat concrete. Abutment Wings shall not be poured until the Abutment Diaphragm and Deck Slab have attained a strength of 3000 p.s.i. For additional details, see ABUTMENT DIAPHRAGM DETAILS (SHEET 1 OF 2 AND SHEET 2 OF 2) and ABUTMENT WING DETAILS (SHEET 2 OF 2).

**ABUTMENT SEAT BAR LIST**

MARK	SIZE	NO.	FORM	LENGTH	LENGTH VARIATION
EPOXY COATED REINFORCING					
BV1	#7	154	STR.	6'-7"	
BH1	#8	8	STR.	44'-8"	
BH2	#4	12	STR.	44'-8"	
BS1	#4	46	BNT.	12'-9"	
P1	#4	24	BNT.	5'-5"	
P2	#4	16	BNT.	7'-8"	
WT1	#4	2	BNT.	5'-2"	
WT2	#8	2	BNT.	11'-2"	
WT3	#4	10	STR.	7'-2" AVG.	4'-2" to 10'-2"
WT4	#8	10	BNT.	8'-6" AVG.	5'-6" to 11'-6"
10 PILE ABUTMENT					
BH3	#4	30	BNT.	3'-7"	
11 PILE ABUTMENT					
BH3	#4	33	BNT.	3'-7"	
12 PILE ABUTMENT					
BH3	#4	36	BNT.	3'-7"	

① 2 Sets of 5

APPROVED BY BRIDGE ENGINEER *Chad Head* DATE *8/16/03*

OKLAHOMA DEPT. OF TRANSPORTATION  
BRIDGE STANDARD (ENGLISH)  
ABUTMENT DETAILS  
TYPE BT-72 AND TYPE J P.C. BEAMS  
INTEGRAL (SHEET 1 OF 2)

1999 SPECIFICATIONS B40-I-ABUT-PC5-1

ODE  
B-46E